



ST MEMS Longevity Program

10-year commitment



ST MEMS Longevity Program

10 years longevity commitment

ST's Product Longevity Program addresses **customer needs** to:

- Protect their design investments by ensuring a minimum of 10 years of availability on selected sensor devices

ST's full product portfolio supported via **normal roadmaps**:

- No change to standard products
- Longevity products are a subset of the ST MEMS portfolio

ST's customers now have a **choice**:

- Buy standard products with existing service and support
- Buy products with longevity commitment to obtain an extended life and increased stability



ST MEMS Longevity Program

10 years longevity commitment

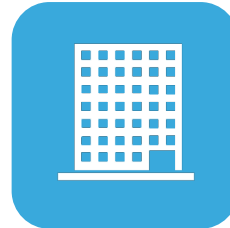
ST is focused on markets requiring long lifecycles



Industrial



Appliances



Building
automation



Defense



Navigation

ST Longevity Program benefits:


- 10-year longevity from Product Introduction Date
- High performance and high quality even in harsh industrial environments (extended temperature ranges, shocks and vibrations)



Product Longevity Webpage

http://www.st.com/web/en/support/product_longevity.html

Languages [EN](#) | [CN](#) | [JP](#)



life.augmented


Part Number/ Keyword Cross Reference

[Home](#) [Products](#) [Applications](#) [Support](#) [Sample & Buy](#) [About](#) [Contact](#) [My ST Login](#) [Parametric Search](#)

[Home](#) > [Resources](#) > [Product Longevity](#)

Product Longevity

- Design Support Calculators
- eDesignSuite
- eCAD Models and Symbols
- Flyers and Brochures
- Presentations
- Product Longevity
- Technical Literature



Longevity Commitment

STMicroelectronics provides a minimum longevity commitment of 10 years for a set of products listed below.

STM32 and STM8 MCU

For STM32 ARM® Cortex®-M and STM8 microcontrollers the 10 years longevity commitment starts from the following dates:

- STM32F0 Series, starting January 1st 2015
- STM32F1 Series, starting January 1st 2015
- STM32F2 Series, starting January 1st 2015
- STM32F3 Series, starting January 1st 2015
- STM32F4 Series, starting January 1st 2015
- STM32L0 Series, starting January 1st 2015
- STM32L1 Series, starting January 1st 2015
- STM8AF Series, starting January 1st 2015
- STM8AL Series, starting January 1st 2015
- STM8L Series, starting January 1st 2015
- STM8S Series, starting January 1st 2015

MEMS sensors

For MEMS sensors the 10 years longevity commitment starts from the following dates:

- IIS328DQ, starting March 1st 2015
- IIS2DH, starting March 1st 2015
- I3G4250D, starting March 1st 2015

Seminars

- 12 mai STM32 hands-on seminar: STM32Cube frees embedded designers
- 16 mai STM32Cube hands-on seminars: Stuttgart & Prague
- 02 juin STM32F7 Hands-on seminars

Featured Videos

- Bluetooth controlled robot made with NUCLEO-F072RB
- STM32F7 The accelerated mechanisms of a smart architecture
- Introduction to the STM32 Open Development Environment
- STM32F0x0 Value Line 32 bits at 32 cents
- The STM32F0 Entry Level Series
- How to migrate your application from one STM32 series to another using STM32Cube



Industrial Product Family

10 years longevity commitment

Accelerometers

IIS328DQ

12-bit
 $\pm 2/\pm 4/\pm 8g$
T=-40 to 105 °C

24-lead 4x4x1.8mm QFN package

Introduction date Q1'15

IIS2DH

12-bit
 $\pm 2/\pm 4/\pm 8/\pm 16g$
T= -40 to 85 °C
FIFO

12-lead 2x2x1mm LGA package

Introduction date Q1'15

Gyroscopes

I3G4250D

16-bit
 $\pm 245/\pm 500/\pm 2000 dps$
T= -40 to 85 °C
FIFO

16-lead 4x4x1mm LGA package

Introduction date Q1'15

IIS328DQ

6

3-axis digital accelerometer for industrial applications



In Production
since Q1 2015

Key features

- **10 years longevity commitment**
- Extended temperature range: -40° to 105 °C
- Dynamically user selectable **FS: ±2g/±4g/±8g**
- **12-bit resolution**, low power consumption (<10 µA at 10 Hz ODR)
- BW (Max) 500 Hz; Output data rate: 0.5 Hz → 1 kHz
- Advanced power saving and sleep-to-wake up function
- 24-lead, 4x4x1.8mm QFPN package



- Anti-tampering / impact recognition and logging
- Vibration monitoring and compensation
- Robotics
- Tilt measurement / motion-activated functions

Ultra-low-power 3-axis linear accelerometer with digital output



In Production
since Q1 2015



Key features

- **10 years longevity commitment**
- Dynamically user selectable **FS: $\pm 2g/\pm 4g/\pm 8g/\pm 16g$**
- Output data rate: from 1 Hz up to 5 kHz
- **Ultra-low power consumption:** down to 2 μA in Low Power mode and 0.5 μA in Power-down mode
- **Embedded FIFO:** 32 levels – 4 different operating modes
- **Programmable interrupt** signals for 4D/6D orientation, motion detection, free-fall and other conditions
- 12-lead, 2x2x1mm, LGA package

- Intelligent power-saving
- Motion-activated functions
- Impact recognition and logging
- Robotics and tilt measurement

I3G4250D

3-axis digital gyroscope for industrial applications



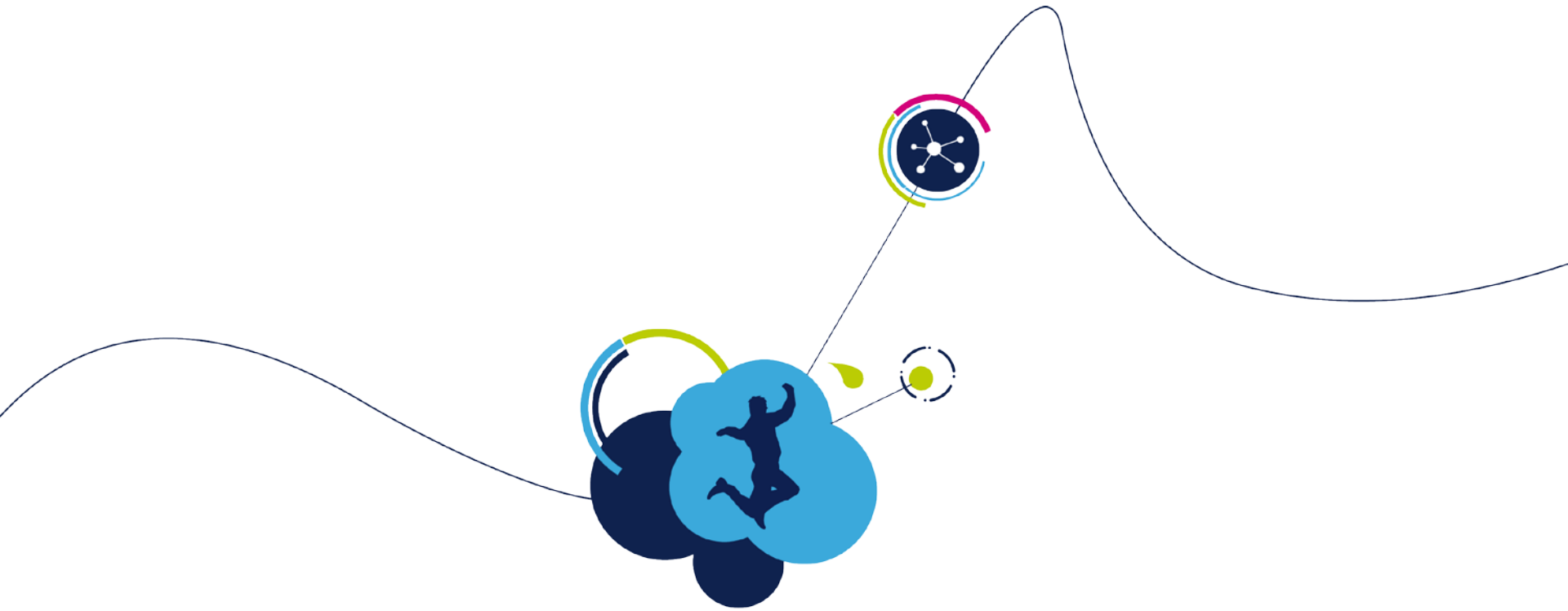
In Production
since Q1 2015

Key features

- 10 years longevity commitment
- 3-axis gyro: **245/500/2000 dps** full-scale
- Low noise and high-stability over temperature
- 16-lead, 4x4x1.1mm LGA package
- Programmable interrupt generators
- Embedded FIFO
- Embedded self-test functionality



- Industrial systems
- Navigational systems
- Telematics
- Robotics



For more information, visit
<http://www.st.com/mems>