

LPS33W

Water-resistant MEMS pressure sensor



Outstanding Accuracy
Embedded Temperature Sensor &
Factory Calibrated

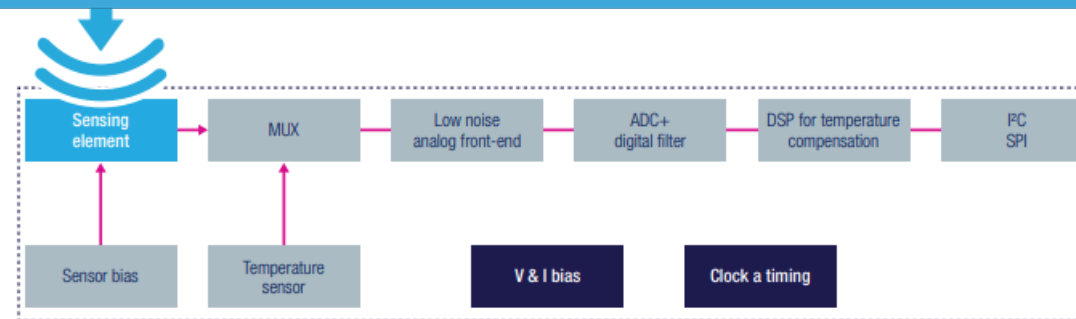
Robust Ceramic Package
with O-ring Metal Lid

Broad Applications Range
Wearable, Consumer & Industrial

Evaluation Board & GUI Available

Water-Resistant MEMS Pressure Sensor

Outstanding Accuracy, Embedded Temp. Sensor & Factory calibrated

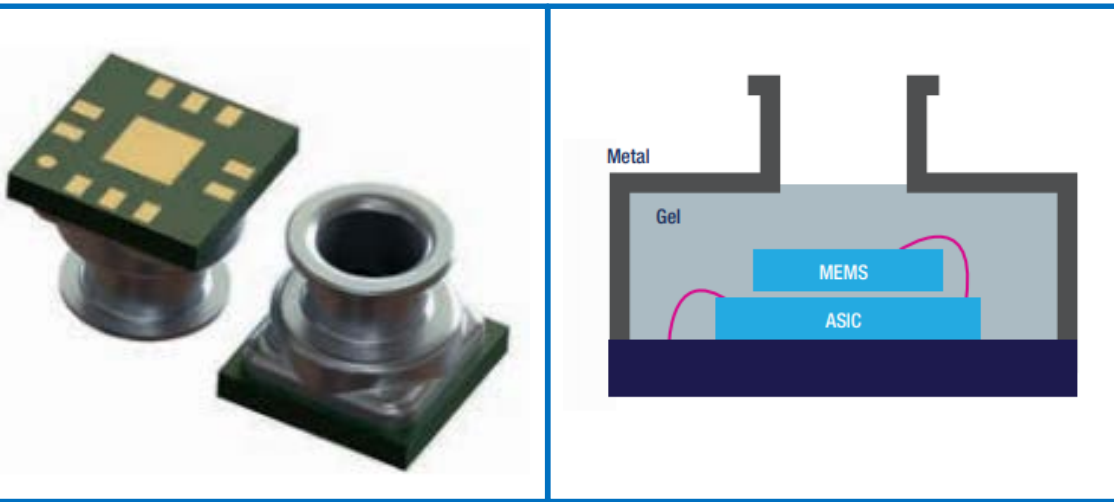


- 260 to 1260 hPa absolute pressure range
- 20x full-scale overpressure capability
- RMS pressure noise: 0.008 hPa
- Embedded temperature compensation
- Low power current consumption down to 3 μ A
- Temperature range: -40 to +85 $^{\circ}$ C
- Embedded FIFO and Interrupt functions: data ready, FIFO flags, pressure thresholds



Water-resistant MEMS pressure sensor

Enabling Water Proof applications with Ceramic Package with O-ring Metal lid



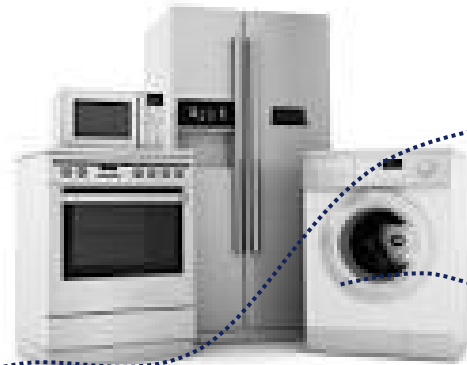
3.3 x 3.3 x 2.9 mm

- Ultra-compact piezo-resistive pressure sensor which functions as a digital output barometer
- Holed package to allow external pressure to reach the sensing element
- Gel inside the IC protects the electrical components from water
- Resistant to: chemicals like chlorine, bromine, salt water, soaps and detergents
- Water-resistant package up to 1 bar

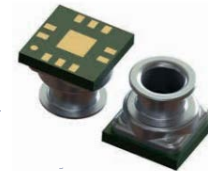
LPS33W

Water-resistant MEMS pressure sensor

Broad Applications Range



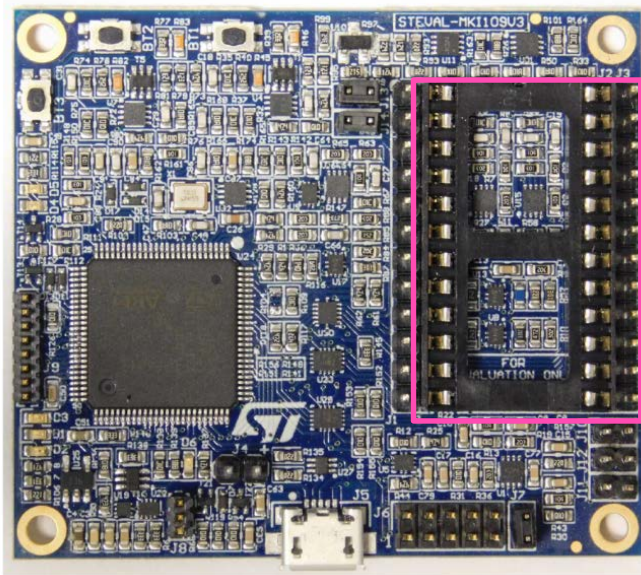
- Altimeters and barometers for portable devices
- Wearable devices
- GPS applications
- Weather station equipment
- Industry 4.0 sensors
- Utility meters
- Appliances



Water-resistant MEMS pressure sensor

Evaluation Board & GUI Available

STEVAL-MKI109V3



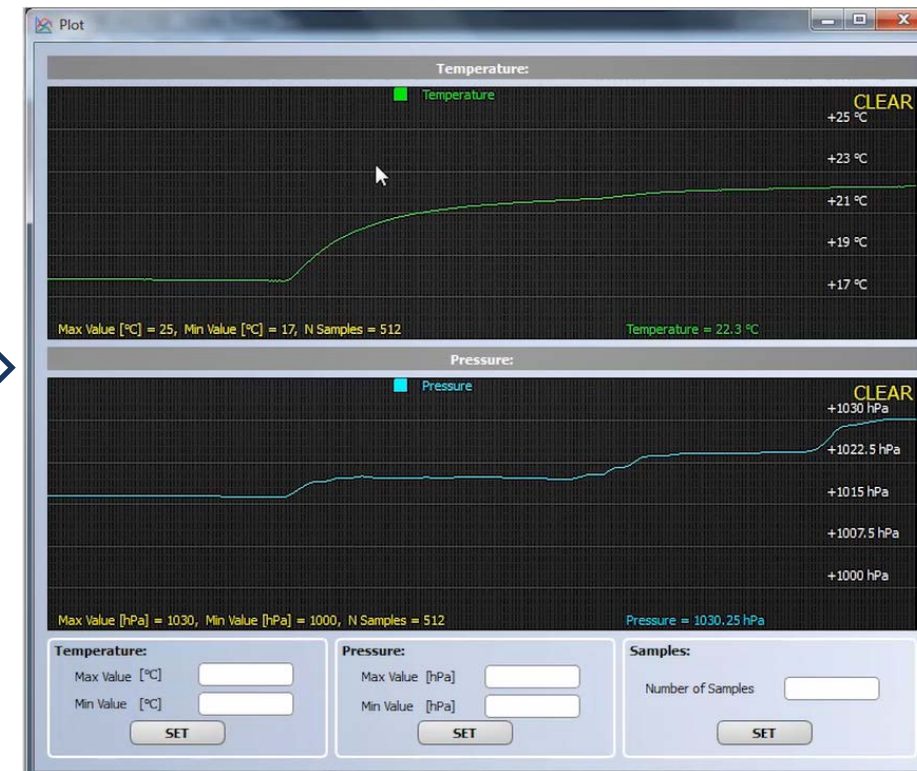
STEVAL-MKI205V1



+



Unico STSW-MEMS034



Professional MEMS tool: ST MEMS adapters motherboard based on the STM32F401VET6 compatible with ST MEMS adapters

LPS33W adapter board standard DIL24 socket

