

# STM32WB - Multiprotocol Wireless SOC



- **BLE 5.0 / 802.15.4 (concurrent)**
- **-96 dBm / -100 dBm sensitivity**
- **+6 dBm output power**
- **Integrated balun**

# STM32WB - Wireless + IP Protection



- **Brand and IP protection**
- Customer **Key Storage**
- Update **Over The Air (OTA)**
- HW **AES** 256-bit, **PKA** (Elliptic Curve)

# STM32WB - Wireless + Ultra-low-power

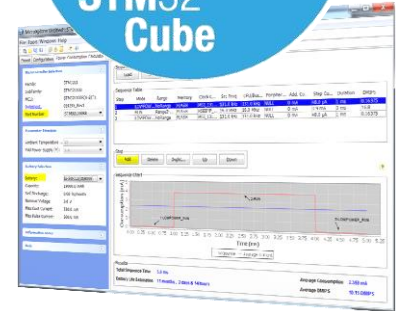
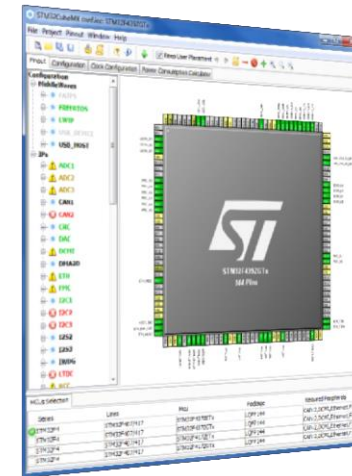
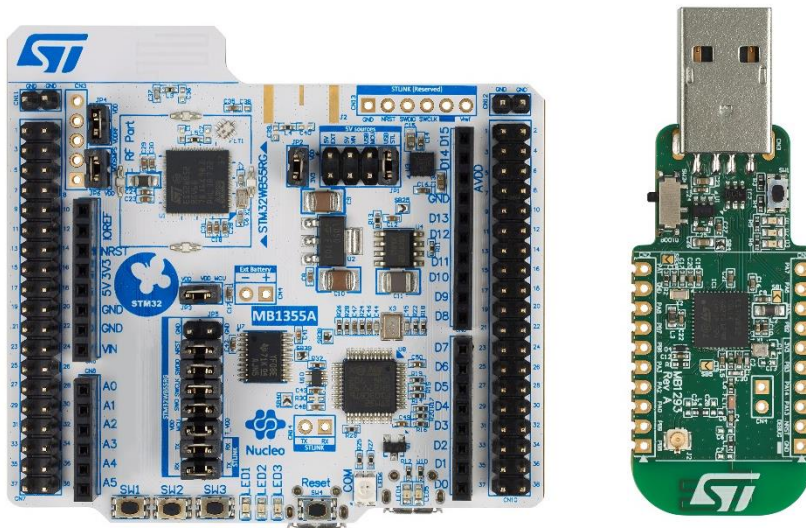
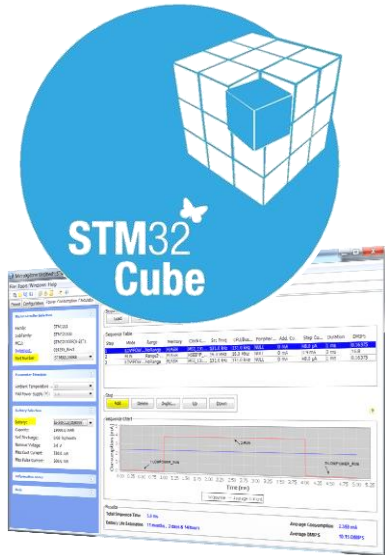


- **50  $\mu\text{A}/\text{MHz}$**  Active dual core mode
- **1.8  $\mu\text{A}$**  with 256KB RAM retention
- **30 nA** shutdown mode
- **4  $\mu\text{s}$**  wakeup



# Prototyping Made as Easy as 1,2,3

STM32   
CubeMonitor-RF



**Hardware**  
STM32 Nucleo Pack

**STM32CubeMX**  
**STM32CubeMonitor-RF**

# Releasing Your Creativity



[www.st.com/STM32WB](http://www.st.com/STM32WB)