
M24C32T-FCU package mechanical data modifications

Silicon identification

This errata sheet applies to the M24C32T-FCU, that is the 32 Kbit serial I²C bus EEPROM delivered in WLCSP four balls.

The impacted part number is M24C32T-FCU6T/TF.

Contents

1	M24C32T-FCU physical product change	5
2	Package mechanical data modifications	8
3	Revision history	9

List of tables

Table 1.	D and E values corresponding to front side view	8
Table 2.	D and E values corresponding to back side view	8
Table 3.	Document revision history	9

List of figures

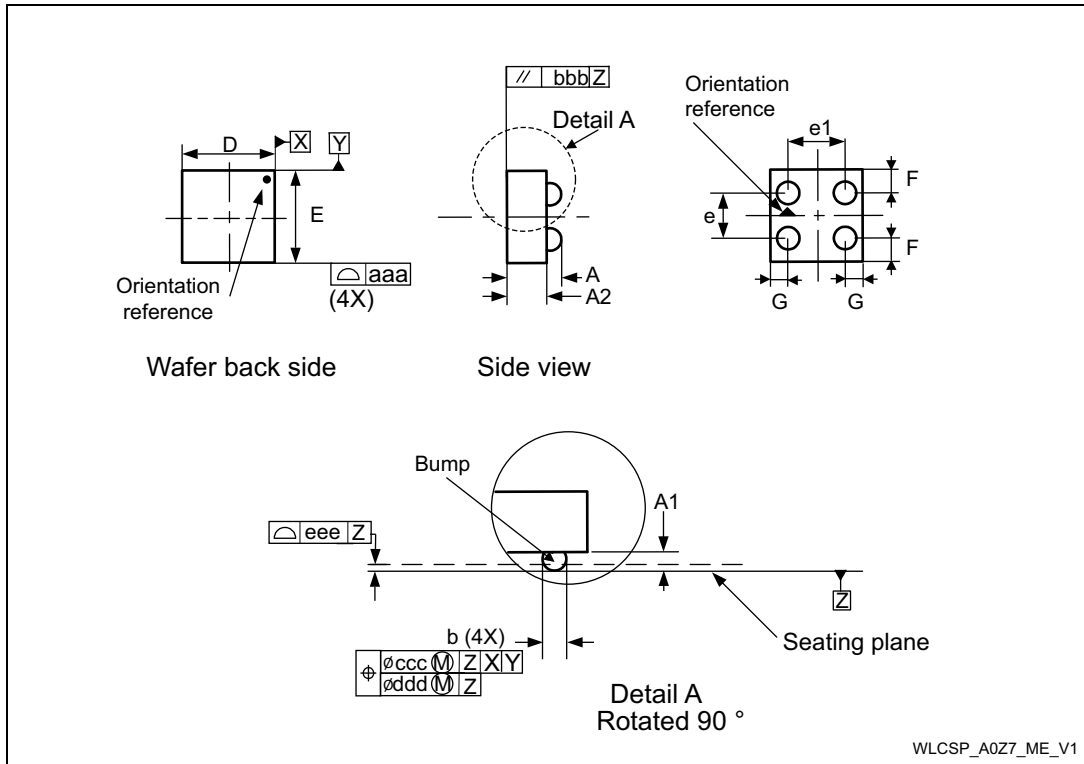
Figure 1.	Ultra Thin WLCSP- 4-bump, 0.851 x 0.851 mm, wafer level chip scale package outline.	5
Figure 2.	D and E front side view.	6
Figure 3.	D and E back side view	6
Figure 4.	D or E side view	7

1 M24C32T-FCU physical product change

There isn't any physical product change.

Figure 1 shows the package outline.

Figure 1. Ultra Thin WLCSP- 4-bump, 0.851 x 0.851 mm, wafer level chip scale package outline



The figures below show the difference between D and E dimension in the front side view (see *Figure 2*), back side (see *Figure 3*) and side view (see *Figure 4*).

Figure 2. D and E front side view

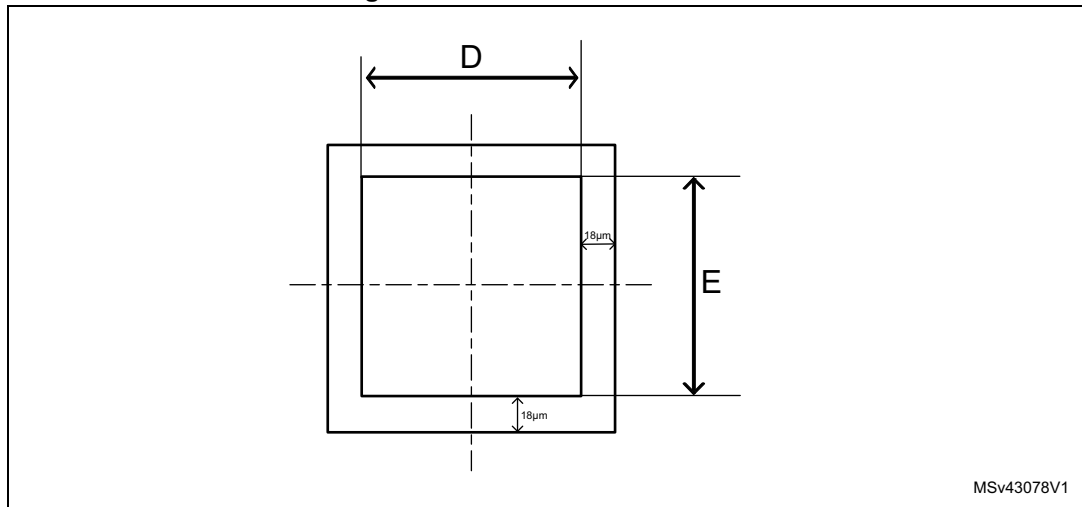


Figure 3. D and E back side view

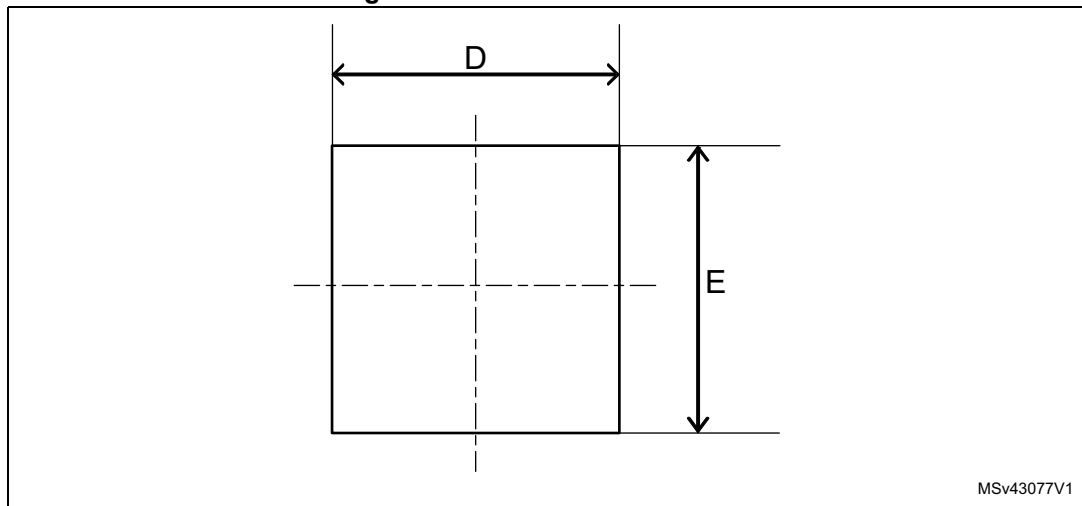
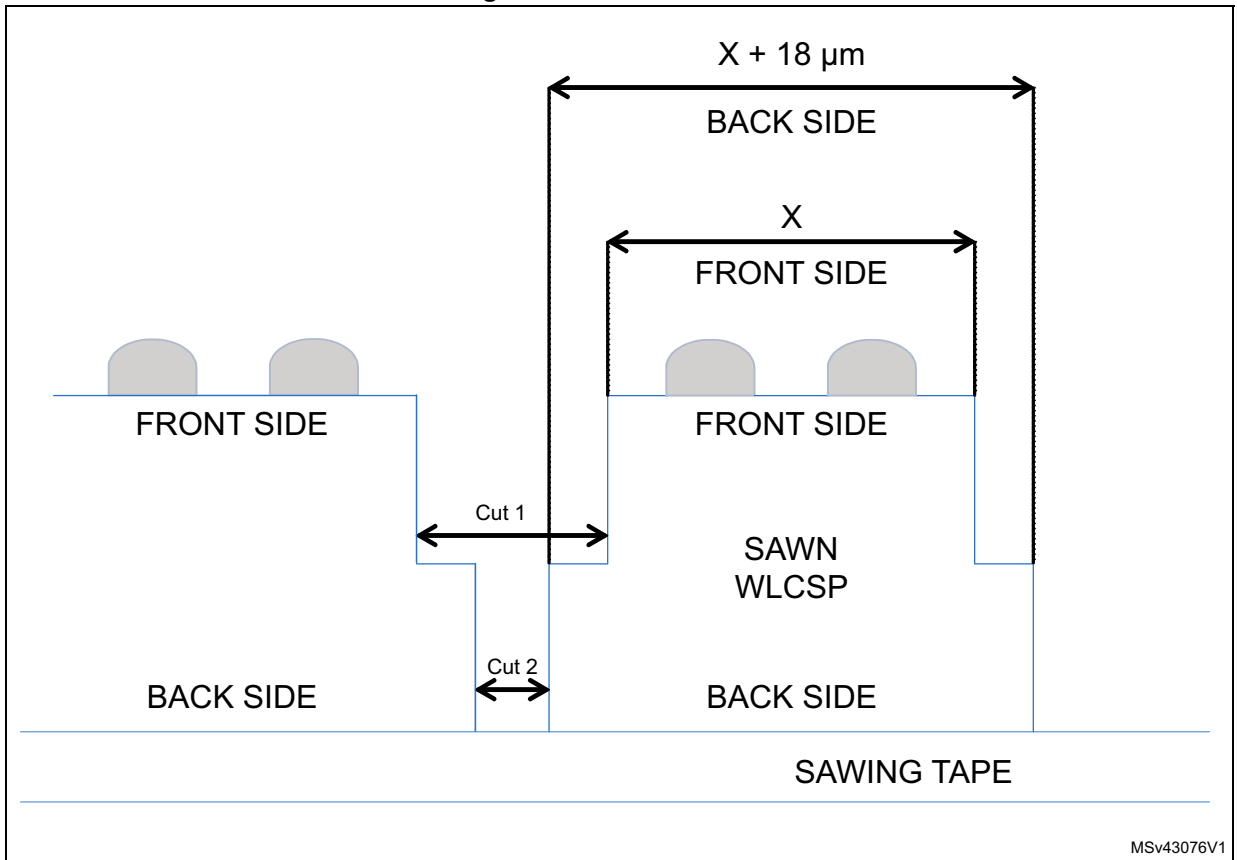


Figure 4. D or E side view



2 Package mechanical data modifications

This document refers to the changes of dimensions D and E (see [Figure 3](#)) described in the M24C32T-FCU datasheet, in tables detailing the dimensions of the Ultra Thin WLCSP 4-bump package.

D and E values must be modified to correct the following mistake:

- The D and E values on M24C32T-FCU datasheet correspond to front side view (ball side), instead of back side view (marking side view).
[Table 1](#) and [Table 2](#) report the data for the front and back view, respectively.

Table 1. D and E values corresponding to front side view

Symbol	Millimeters			Inches		
	Min	Typ	Max	Min	Typ	Max
D	-	0.833	0.853	-	0.0328	0.0336
E	-	0.833	0.853	-	0.0328	0.0336

Table 2. D and E values corresponding to back side view

Symbol	Millimeters			Inches		
	Min	Typ	Max	Min	Typ	Max
D	0.831	0.851	0.871	0.0327	0.0335	0.0343
E	0.831	0.851	0.871	0.0327	0.0335	0.0343

The difference between back side and front side dimension is 18 μm (0.018 mm). This difference is due to two-step sawing process, where cut 1 and cut 2 are performed with blades having different thickness (see [Figure 4](#) in which X represents D or E and it has the same value and tolerance).

3 Revision history

Table 3. Document revision history

Date	Revision	Changes
08-Jul-2016	1	Initial release.

IMPORTANT NOTICE – PLEASE READ CAREFULLY

STMicroelectronics NV and its subsidiaries ("ST") reserve the right to make changes, corrections, enhancements, modifications, and improvements to ST products and/or to this document at any time without notice. Purchasers should obtain the latest relevant information on ST products before placing orders. ST products are sold pursuant to ST's terms and conditions of sale in place at the time of order acknowledgement.

Purchasers are solely responsible for the choice, selection, and use of ST products and ST assumes no liability for application assistance or the design of Purchasers' products.

No license, express or implied, to any intellectual property right is granted by ST herein.

Resale of ST products with provisions different from the information set forth herein shall void any warranty granted by ST for such product.

ST and the ST logo are trademarks of ST. All other product or service names are the property of their respective owners.

Information in this document supersedes and replaces information previously supplied in any prior versions of this document.

© 2016 STMicroelectronics – All rights reserved