

Introduction

The STM32 Nucleo-144 boards based on the MB1312 reference board (NUCLEO-L496ZG, NUCLEO-L496ZG-P, NUCLEO-L4A6ZG, NUCLEO-L4P5ZG, NUCLEO-L4R5ZI, and NUCLEO-L4R5ZI-P) provide an affordable and flexible way for users to try out new concepts and build prototypes with STM32 microcontrollers, choosing from the various combinations of performance, power consumption and features. The ST Zio connector, which extends the ARDUINO® Uno V3 connectivity, and the ST morpho headers make it easy to expand the functionality of the Nucleo open development platform with a wide choice of specialized shields. The STM32 Nucleo-144 boards do not require any separate probe as they integrate the ST-LINK/V2-1 debugger/programmer. The STM32 Nucleo-144 boards come with the STM32 comprehensive free software libraries and examples available with the STM32Cube MCU Package.

Figure 1. Nucleo-144 board (top view)

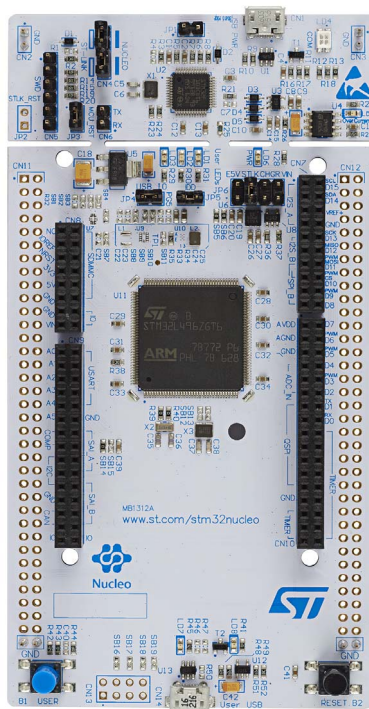
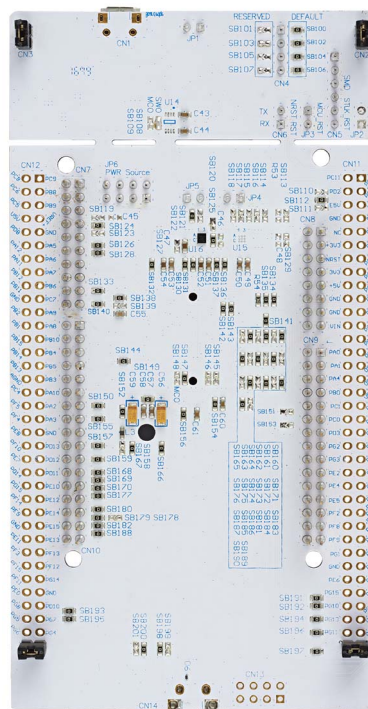


Figure 2. Nucleo-144 board (bottom view)



Pictures are not contractual..

Contents

1	Features	7
2	Ordering information	8
2.1	Codification	8
3	Development environment	9
3.1	System requirements	9
3.2	Development toolchains	9
3.3	Demonstration software	9
3.4	EDA resources	9
4	Conventions	10
5	Safety recommendations	11
5.1	Targeted audience	11
5.2	Handling the board	11
6	Quick start	12
6.1	Getting started	12
7	Hardware layout and configuration	13
7.1	STM32 Nucleo-144 board layout	14
7.2	STM32 Nucleo-144 board mechanical drawing	16
7.3	Cutable PCB	18
7.4	Embedded ST-LINK/V2-1	18
7.4.1	Drivers	19
7.4.2	ST-LINK/V2-1 firmware upgrade	19
7.4.3	Using the ST-LINK/V2-1 to program and debug the on-board STM32	19
7.4.4	Using ST-LINK/V2-1 to program and debug an external STM32 application	20
7.5	Power supply and power selection	23
7.5.1	Power supply input from ST-LINK/V2-1 USB connector	23
7.5.2	External power supply inputs	23
7.5.3	External power supply output	25

	7.5.4	SMPS power supply	25
7.6		LEDs	26
7.7		Push-buttons	27
7.8		JP5 (IDD)	27
7.9		OSC clock	27
	7.9.1	OSC clock supply	27
7.10		OSC 32 KHz clock supply	28
7.11		LPUART1 communication	28
7.12		USB FS OTG	29
7.13		Solder bridges and jumpers	30
7.14		Expansion connectors	33
7.15		ST Zio connectors	39
7.16		ST morpho connector	43
7.17		Bootloader limitation	44
	7.17.1	Bootloader operation	44
	7.17.2	Bootloader identification	45
	7.17.3	Bootloader limitation	45
	7.17.4	Affected parts	45
	7.17.5	Workarounds	45
8		Product information	46
	8.1	Product marking	46
	8.2	Product history	47
	8.3	Board revision history	50
9		Compliance statements and conformity declarations	51
	9.1	Federal Communications Commission (FCC) compliance statement	51
	9.2	Innovation, Science and Economic Development Canada (ISED) compliance statement	52
	9.3	UKCA conformity	52
	9.4	CE conformity	52
	9.4.1	Simplified EU declaration of conformity	52
	9.4.2	Déclaration de conformité UE simplifiée	52
10		Product disposal	54

Revision history 55



List of tables

Table 1.	Ordering information	8
Table 2.	Codification explanation	8
Table 3.	ON/OFF conventions	10
Table 4.	CN4 states of the jumpers	18
Table 5.	Debug connector CN5 (SWD)	21
Table 6.	External power sources	24
Table 7.	Power related jumper	24
Table 8.	LPUART1 pin configuration	28
Table 9.	USB pin configuration	29
Table 10.	Configuration of the solder bridges and jumpers	30
Table 11.	ST Zio connectors pin assignments	40
Table 12.	ST morpho connector pin assignments	43
Table 13.	Product history	47
Table 14.	Board revision history	50
Table 15.	Document revision history	55

List of figures

Figure 1.	Nucleo-144 board (top view).	1
Figure 2.	Nucleo-144 board (bottom view).	1
Figure 3.	Hardware block diagram.	13
Figure 4.	STM32 Nucleo-144 board top layout	14
Figure 5.	STM32 Nucleo-144 board bottom layout	15
Figure 6.	STM32 Nucleo-144 board mechanical drawing in millimeter	16
Figure 7.	Nucleo-144 board mechanical drawing in mils	17
Figure 8.	USB composite device	19
Figure 9.	Connecting the STM32 Nucleo-144 board to program the on-board STM32	20
Figure 10.	Using ST-LINK/V2-1 to program an external STM32 application	22
Figure 11.	NUCLEO-L496ZG.	33
Figure 12.	NUCLEO-L496ZG-P.	34
Figure 13.	NUCLEO-L4A6ZG	35
Figure 14.	NUCLEO-L4P5ZG	36
Figure 15.	NUCLEO-L4R5ZI	37
Figure 16.	NUCLEO-L4R5ZI-P	38

1 Features

The STM32 Nucleo-144 boards offer the following common features:

- STM32 Arm[®]-based^(a) microcontroller in LQFP144 package
- USB OTG FS
- 3 user LEDs
- 2 user and reset push-buttons
- 32.768 kHz crystal oscillator
- Board connectors:
 - USB with Micro-AB
 - SWD
 - ST Zio expansion connector including ARDUINO[®] Uno V3
 - ST morpho expansion connector
- Flexible power-supply options: ST-LINK, USB V_{BUS} , or external sources
- On-board ST-LINK/V2-1 debugger/programmer with USB re-enumeration capability: mass storage, Virtual COM port and debug port
- Comprehensive free software libraries and examples available with the STM32Cube MCU Package
- Support of a wide choice of Integrated Development Environments (IDEs) including IAR[™], Keil[®], GCC-based IDEs

Additionally, some STM32 Nucleo-144 boards offer the following specific features:

- External SMPS to generate V_{core} logic supply^(b)

arm

a. Arm is a registered trademark of Arm Limited (or its subsidiaries) in the US and/or elsewhere.

b. SMPS significantly reduces power consumption in Run mode, by generating V_{core} logic supply from an external DC/DC converter.

2 Ordering information

To order an STM32 Nucleo-144 board, refer to [Table 1](#). Additional information is available from the datasheet and reference manual of the target STM32.

Table 1. Ordering information

Order code	Board reference	Target STM32	Differentiating features
NUCLEO-L496ZG	MB1312	STM32L496ZGT6U	-
NUCLEO-L496ZG-P		STM32L496ZGT6PU	External SMPS
NUCLEO-L4A6ZG		STM32L4A6ZGT6U	Cryptography
NUCLEO-L4P5ZG		STM32L4P5ZGT6U	-
NUCLEO-L4R5ZI		STM32L4R5ZIT6U	-
NUCLEO-L4R5ZI-P		STM32L4R5ZIT6PU	External SMPS

2.1 Codification

The meaning of the codification is explained in [Table 2](#).

Table 2. Codification explanation

NUCLEO-XXYYZT(-P)	Description	Example: NUCLEO-L496ZG-P
XX	MCU series in STM32 Arm Cortex MCUs	STM32L4 Series
YY	MCU product line in the series	STM32L496
Z	STM32 package pin count: – Z for 144 pins	144 pins
T	STM32 Flash memory size: – G for 1 Mbyte – I for 2 Mbytes	1 Mbyte
-P	STM32 has external SMPS function	External SMPS

The order code is mentioned on a sticker placed on the top side of the board.

3 Development environment

3.1 System requirements

- Windows® OS (10 or 11), Linux® 64-bit, or macOS®(a)(b)(c)
- USB Type-A to Micro-B cable

3.2 Development toolchains

- IAR Systems® - IAR Embedded Workbench®
- Keil® - MDK-ARM^(d)
- STMicroelectronics - STM32CubeIDE

3.3 Demonstration software

The demonstration software, included in the STM32Cube MCU Package corresponding to the on-board MCU, is preloaded in the STM32 Flash memory for easy demonstration of the device peripherals in standalone mode. The latest versions of the demonstration source code and associated documentation can be downloaded from the www.st.com/stm32nucleo webpage.

3.4 EDA resources

All board design resources, including schematics, EDA databases, manufacturing files, and the bill of materials are available from the relevant product page at www.st.com.

-
- a. macOS® is a trademark of Apple Inc., registered in the U.S. and other countries
 - b. Linux is a registered trademark of Linus Torvalds.
 - c. Windows is a trademark of the Microsoft group of companies.
 - d. On Windows® only.

4 Conventions

[Table 3](#) provides the conventions used for the ON and OFF settings in the present document.

Table 3. ON/OFF conventions

Convention	Definition
Jumper JPx ON	Jumper fitted
Jumper JPx OFF	Jumper not fitted
Solder bridge SBx ON	SBx connections closed by solder or 0 ohm resistor
Solder bridge SBx OFF	SBx connections left open

In this document the references for all information that is common to all sale types, are “STM32 Nucleo-144 board” and “STM32 Nucleo-144 boards”.

5 Safety recommendations

5.1 Targeted audience

This product targets users with at least basic electronics or embedded software development knowledge such as engineers, technicians, or students. This board is not a toy and is not suited for use by children.

5.2 Handling the board

This product contains a bare printed circuit board and like all products of this type, the user must be careful about the following points:

- The connection pins on the board might be sharp. Be careful when handling the board to avoid hurting yourself.
- This board contains static-sensitive devices. To avoid damaging it, handle the board in an ESD-proof environment.
- While powered, do not touch the electric connections on the board with your fingers or anything conductive. The board operates at a voltage level that is not dangerous, but components might be damaged when shorted.
- Do not put any liquid on the board and avoid operating the board close to water or at a high humidity level.
- Do not operate the board if it is dirty or dusty.

6 Quick start

This section describes how to start a development quickly using the STM32 Nucleo-144 board.

Before installing and using the product, accept the Evaluation Product License Agreement from the www.st.com/epl webpage. For more information on the STM32 Nucleo-144 board and for demonstration software, visit the www.st.com/stm32nucleo webpage.

6.1 Getting started

Follow the sequence below to configure the Nucleo-144 board and launch the demonstration application (for components location refer to [Figure 4: STM32 Nucleo-144 board top layout](#)).

1. Check the jumper position on the board:
JP1 (PWR-EXT) OFF (see [Section 7.5.1: Power supply input from ST-LINK/V2-1 USB connector](#) for more details)
JP6 (Power source) on ST-LINK side (for more details see [Table 7: Power related jumper](#))
JP5 (IDD) ON (for more details see [Section 7.8: JP5 \(IDD\)](#))
CN4 ON selected (for more details see [Table 4: CN4 states of the jumpers](#)).
2. For the correct identification of the device interfaces from the host PC and before connecting the board, install the Nucleo USB driver available on the www.st.com/stm32nucleo website.
3. To power the board connect the STM32 Nucleo-144 board to a PC with a USB 'Type-A to Micro-B' cable through the USB connector CN1 on the ST-LINK. As a result, the green LED LD6 (PWR) and LD4 (COM) light up and the red LED LD3 blinks.
4. Press button B1 (left button).
5. Observe that the blinking frequency of the three LEDs LD1 to LD3 changes, by clicking on the button B1.
6. The software demonstration and the several software examples, that allow the user to use the Nucleo features, are available at the www.st.com/stm32nucleo webpage.
7. Develop an application, using the available examples.

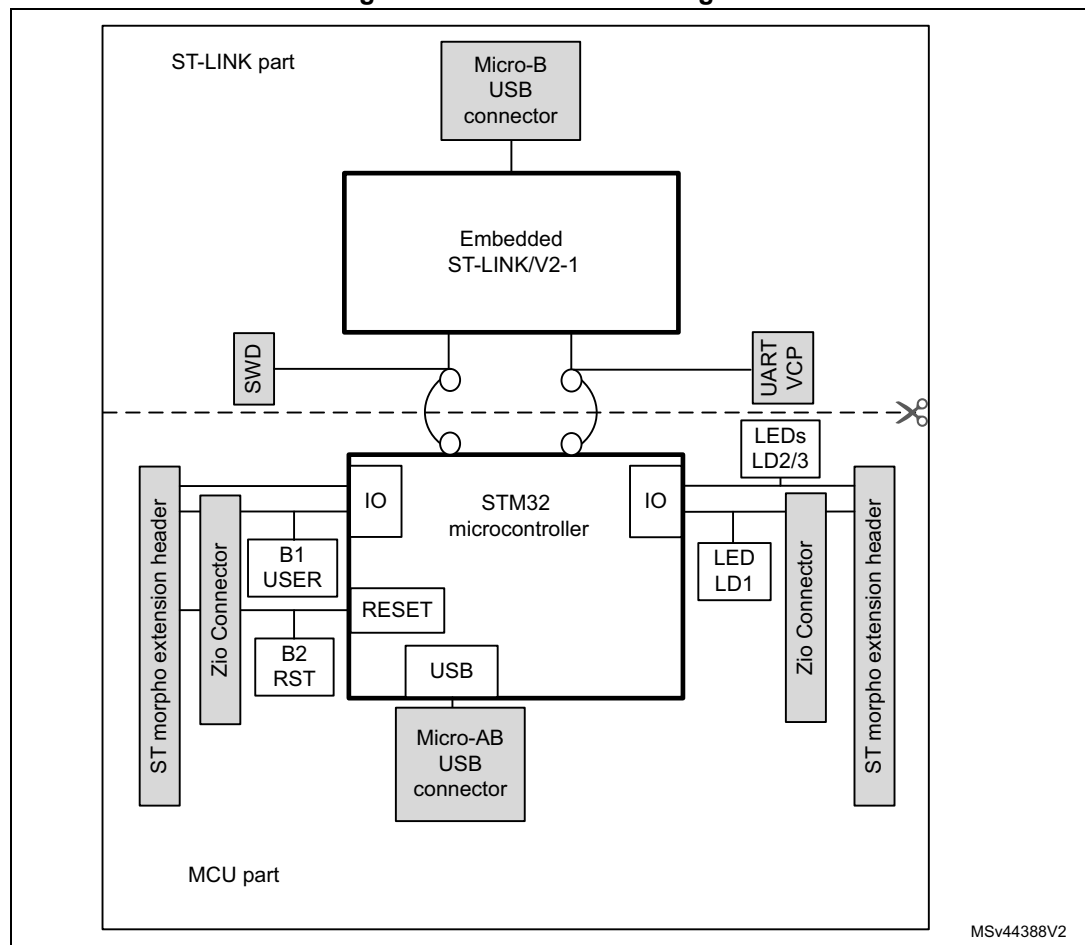
7 Hardware layout and configuration

The STM32 Nucleo-144 board is designed around the STM32 microcontrollers in a 144-pin LQFP package.

Figure 3 shows the connections between the STM32 microcontroller and its peripherals (ST-LINK/V2-1, push-buttons, LEDs, USB, ST Zio connectors and ST morpho headers).

Figure 4 and *Figure 5* show the location of these features on the STM32 Nucleo-144 board. *Figure 6* and *Figure 7* show the mechanical dimensions of the STM32 Nucleo-144 board.

Figure 3. Hardware block diagram



1. Ext SMPS function is only available on '-P' suffixed boards.

7.1 STM32 Nucleo-144 board layout

Figure 4. STM32 Nucleo-144 board top layout

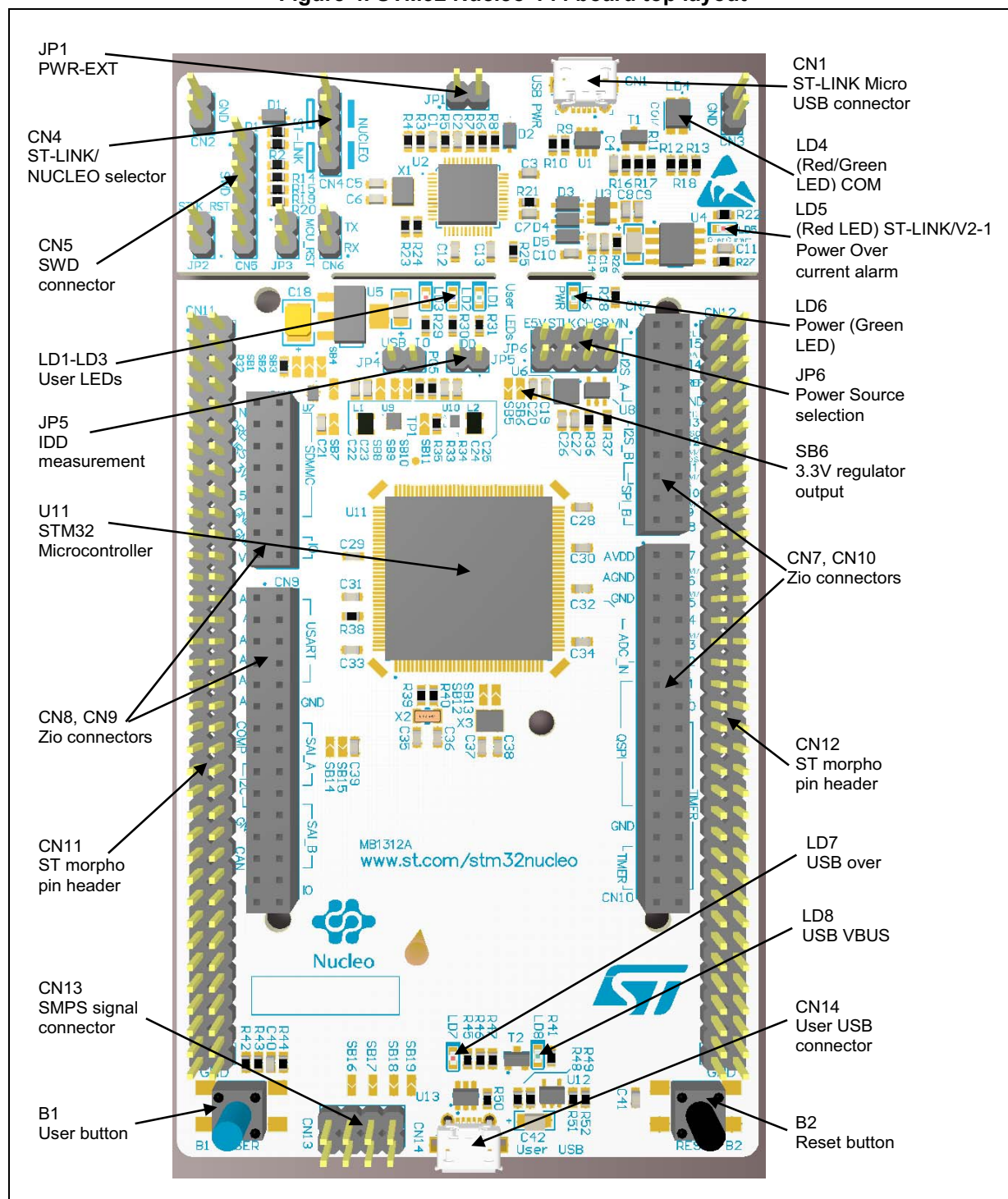
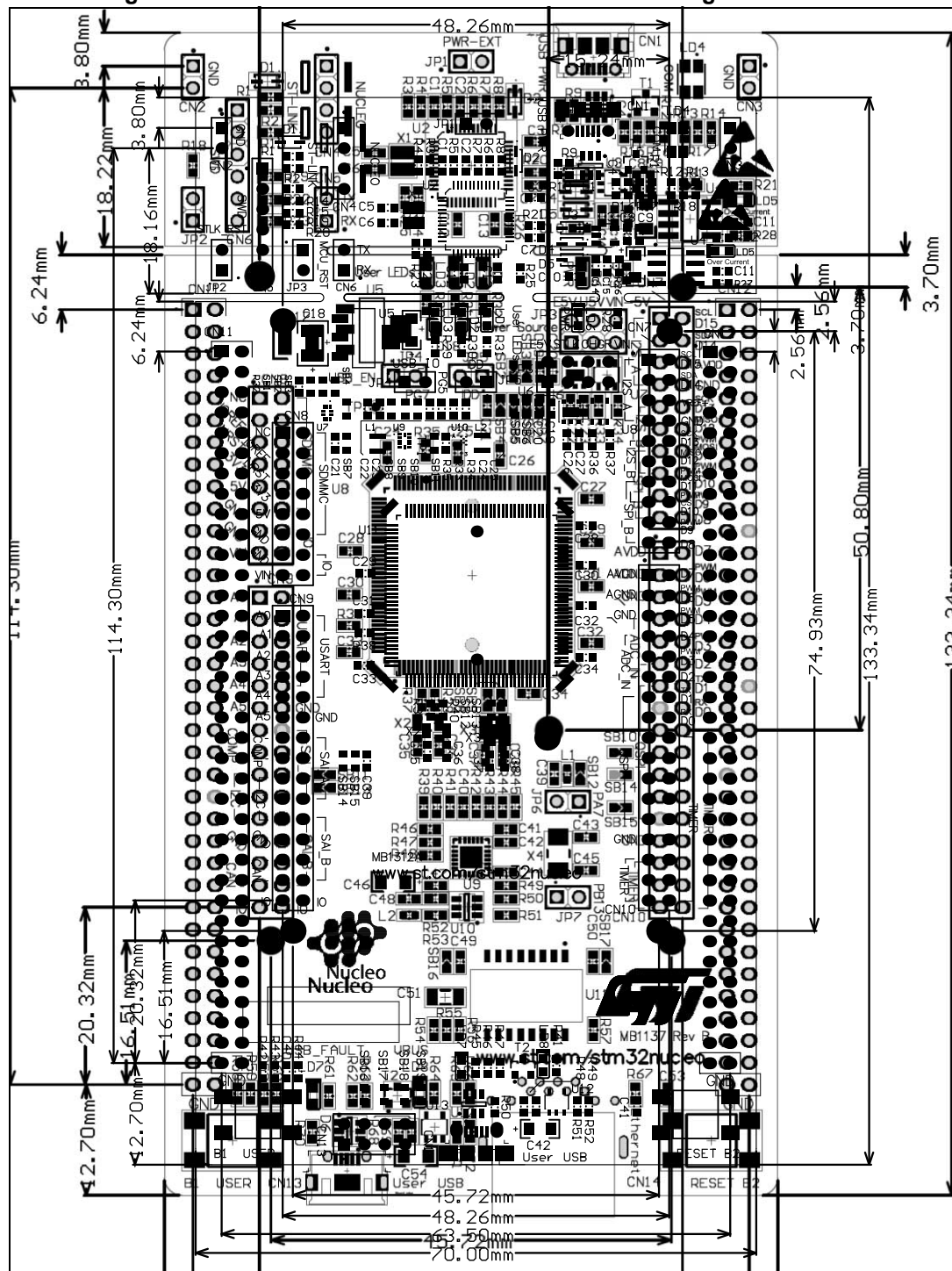


Figure 5. STM32 Nucleo-144 board bottom layout



7.2 STM32 Nucleo-144 board mechanical drawing

Figure 6. STM32 Nucleo-144 board mechanical drawing in millimeter



[illegible]

7.3 Cuttable PCB

The STM32 Nucleo-144 board is divided into two parts: ST-LINK and target STM32. The ST-LINK part of the PCB can be cut out to reduce the board size. In this case the remaining target STM32 part can only be powered by V_{IN} , 5V and 3.3 V on the ST morpho connector CN11, or by V_{IN} and 3.3 V on the ST Zio connector CN8. It is still possible to use the ST-LINK part to program the STM32, using wires between the CN5 and SWD available signals on the ST morpho connector (SWCLK CN11 pin 15, SWDIO CN11 pin 13 and NRST CN11 pin 14, same I/O level as VDD_MCU).

7.4 Embedded ST-LINK/V2-1

The ST-LINK/V2-1 programming and debugging tool is integrated in the STM32 Nucleo-144 board.

The embedded ST-LINK/V2-1 supports only SWD for STM32 devices. For information about debugging and programming features refer to the *ST-LINK/V2 in-circuit debugger/programmer for STM8 and STM32* user manual (UM1075), which describes in details all the ST-LINK/V2 features.

The changes versus ST-LINK/V2 version are listed below. New features supported on ST-LINK/V2-1:

- USB software re-enumeration
- Virtual COM port interface on USB
- Mass storage interface on USB
- USB power management request for more than 100 mA power on USB

Features not supported on ST-LINK/V2-1:

- SWIM interface
- Minimum supported application voltage limited to 3 V

There are two different ways to use the embedded ST-LINK/V2-1, depending on the jumper state (see [Table 4](#)):

- Program/debug the STM32 on board
- Program/debug the STM32 in an external application board, using a cable connected to SWD connector CN5

Table 4. CN4 states of the jumpers

Jumper state	Description
Both CN4 jumpers ON	ST-LINK/V2-1 functions enabled for on-board programming (default). See Section 7.4.3 .
Both CN4 jumpers OFF	ST-LINK/V2-1 functions enabled for external CN5 connector (SWD supported). See Section 7.4.4 .

7.4.1 Drivers

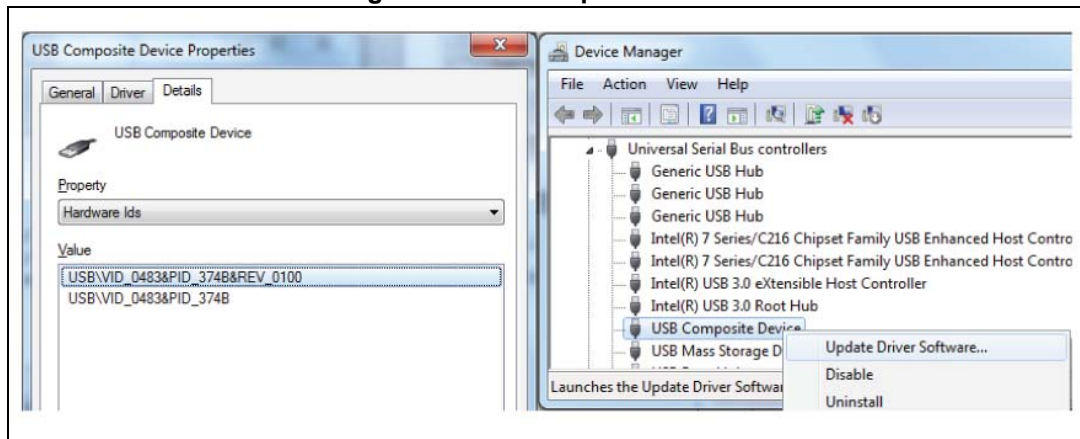
Before connecting the Nucleo-144 board to a Windows® (XP, 7, 8 and 10) PC via USB, install the driver for ST-LINK/V2-1 that can be downloaded from the www.st.com website.

If the STM32 Nucleo-144 board is connected to the PC before installing the driver, the PC device manager may report some Nucleo interfaces as “Unknown”.

To recover from this situation, after installing the dedicated driver, the association of “Unknown” USB devices found on the STM32 Nucleo-144 board to this dedicated driver, must be updated in the device manager manually.

Note: It is recommended to proceed by using USB Composite Device, as shown in [Figure 8](#).

Figure 8. USB composite device

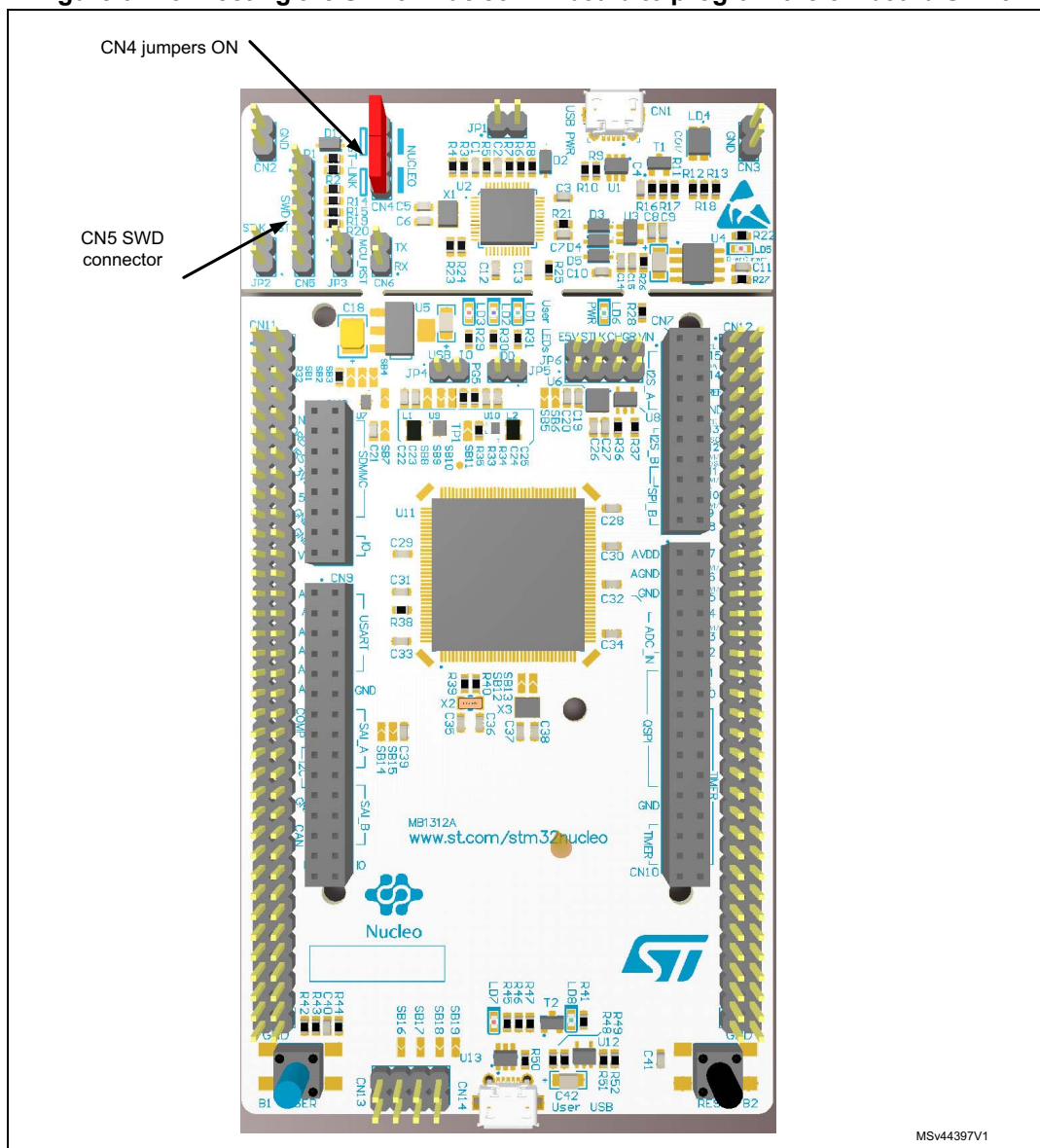


7.4.2 ST-LINK/V2-1 firmware upgrade

The ST-LINK/V2-1 embeds a firmware upgrade mechanism for in-situ upgrade through the USB port. As the firmware may evolve during the lifetime of the ST-LINK/V2-1 product (for example new functionalities, bug fixes, support for new microcontroller families), it is recommended to keep the ST-LINK/V2-1 firmware up to date before starting to use the STM32 Nucleo-144 board. The latest version of this firmware is available from the www.st.com website.

7.4.3 Using the ST-LINK/V2-1 to program and debug the on-board STM32

To program the on-board STM32, place the two jumpers marked in red on the connector CN4, as shown in [Figure 9](#). The CN5 connector must not be used, since it could disturb the communication with the STM32 microcontroller of the Nucleo-144 board.

Figure 9. Connecting the STM32 Nucleo-144 board to program the on-board STM32

7.4.4 Using ST-LINK/V2-1 to program and debug an external STM32 application

It is very easy to use the ST-LINK/V2-1 to program the STM32 on an external application.

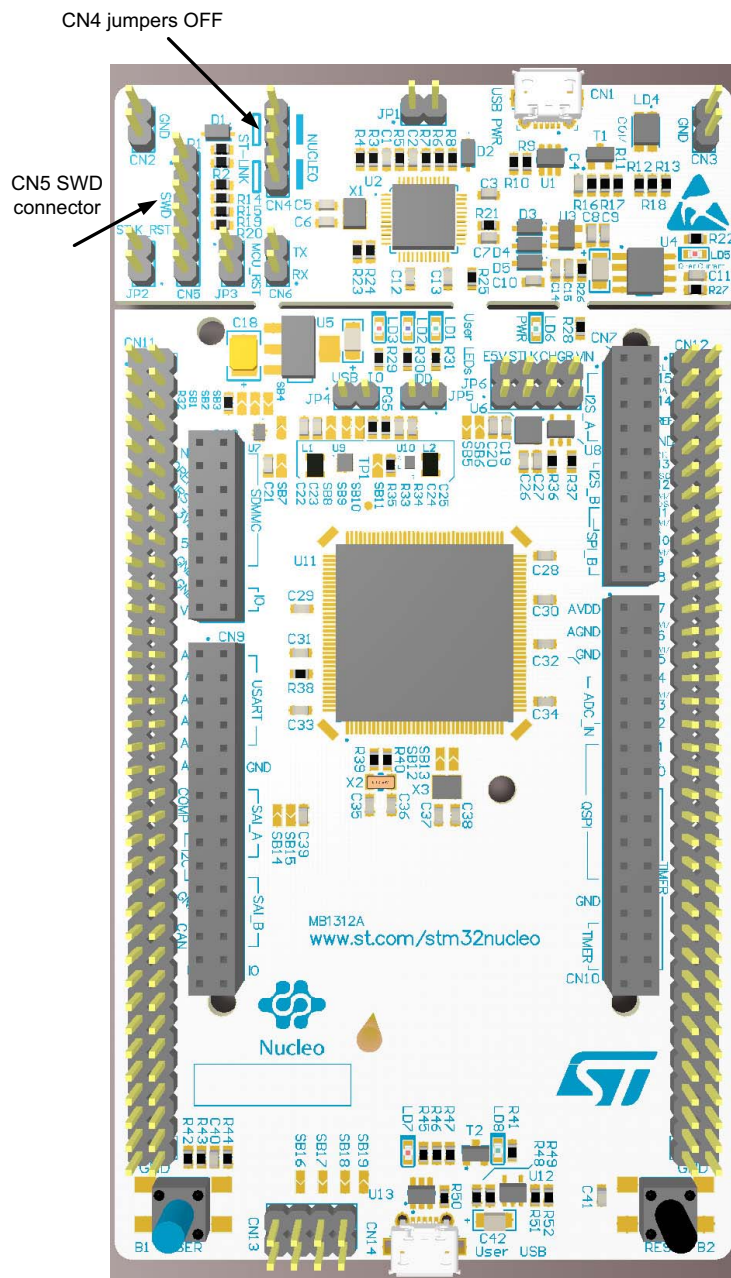
Simply remove the two jumpers from CN4, as shown in [Figure 10](#) and connect the application to the SWD debug connector according to [Table 5](#).

Note: JP4 NRST (target STM32 RESET) must be open when CN3 pin 5 is used in an external application.

Table 5. Debug connector CN5 (SWD)

Pin	CN5	Description
1	VDD_TARGET	V _{DD} from application
2	SWCLK	SWD clock
3	GND	ground
4	SWDIO	SWD data input/output
5	NRST	RESET of target STM32
6	SWO	Reserved

Figure 10. Using ST-LINK/V2-1 to program an external STM32 application



MSv44398V1

7.5 Power supply and power selection

The power supply is provided either by the host PC through the USB cable or by an external source: V_{IN} (7 V-12 V), E5V (5 V) or +3.3 V power supply pins on CN8 or CN11. If V_{IN} , E5V or +3.3 V is used to power a Nucleo-144 board, this power source must comply with the EN 62368-1:2014+A11:2017 standard. It must be a safety extralow voltage (SELV) with limited power capability.

If the power supply is +3.3 V, the ST-LINK is not powered and cannot be used.

7.5.1 Power supply input from ST-LINK/V2-1 USB connector

The STM32 Nucleo-144 board and shield can be powered from the ST-LINK USB connector CN1 (U5V), by placing a jumper between the pins 3 and 4 of JP6, as shown in [Table 7: Power related jumper](#). Note that only the ST-LINK part is power supplied before the USB enumeration, as the host PC only provides 100 mA to the board at that time. During the USB enumeration, the STM32 Nucleo-144 board requires 300 mA of current to the host PC. If the host is able to provide the required power, the targeted STM32 microcontroller is powered and the green LED LD6 is turned ON, thus the STM32 Nucleo-144 board and its shield can consume a maximum current of 300 mA, not more. If the host is not able to provide the required current, the targeted STM32 microcontroller and the extension boards are not power supplied. As a consequence the green LED LD6 stays turned OFF. In such case it is mandatory to use an external power supply as explained in the next section.

After the USB enumeration succeeds, the ST-LINK U5V power is enabled, by asserting the PWR_EN pin. This pin is connected to a power switch (ST890), which powers the board.

This power switch also features a current limitation to protect the PC if a short-circuit happens on the board. If an overcurrent (more than 500 mA) happens on the board, the red LED LD5 lits up.

Warning: If the maximum current consumption of the STM32 Nucleo-144 board and its shield boards exceed 300 mA, it is mandatory to power the STM32 Nucleo-144 board, using an external power supply connected to E5V, V_{IN} or +3.3 V.

Note: If the board is powered by a USB charger, there is no USB enumeration, so the green LED LD6 stays in OFF state permanently and the target STM32 is not powered. In this specific case a jumper must be placed between pins 5 and 6 of JP6, to allow the board to be powered anyway.

7.5.2 External power supply inputs

Depending on the used voltage, an external power source supplies in three different ways the STM32 Nucleo-144 board and its shield boards. The three power sources are listed in [Table 6](#).

When the STM32 Nucleo-144 board is power supplied by V_{IN} or E5V, the jumper configuration must be as showed below:

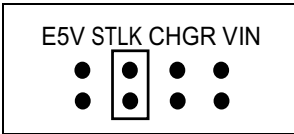
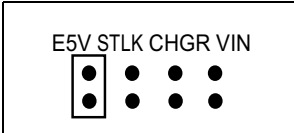
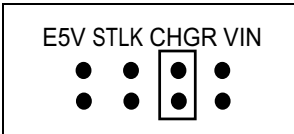
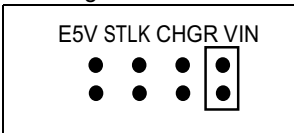
- Jumper JP6 on pin 1 and pin 2 for E5V or jumper JP6 on pin 7 and pin 8 for V_{IN}
- Jumper JP1 OFF

Table 6. External power sources

Input power name	Connector pins	Voltage range	Max current	Limitation
V_{IN}	CN8 pin 15 CN11 pin 24	7 V to 12 V	800 mA	From 7 V to 12 V only and input current capability is linked to input voltage: – 800 mA input current when $V_{IN}=7$ V – 450 mA input current when $7V < V_{IN} < 9V$ – 250 mA input current when $9 V < V_{IN} < 12 V$
E5V	CN11 pin 6	4.75 V to 5.25 V	500 mA	-
+3.3 V	CN8 pin 7 CN11 pin 16	3 V to 3.6 V	-	Two possibilities: – ST-LINK PCB is cut – SB3 and SB111 OFF (ST-LINK not powered)

The 5 V power source is selected by the jumper JP6 as shown in [Table 7](#).

Table 7. Power related jumper

Jumper	Description
JP6	STLK (ST-LINK V_{BUS}) is used as power source when JP6 is set as shown on the right (Default setting)
	
	E5V is used as power source when JP6 is set as shown on the right:
	
JP6	CHGR (USB Charger on CN1) is used as power source when JP6 is set as shown on the right:
	
JP6	V_{IN} is used as power source when JP6 is set as shown on the right:
	

Using V_{IN} or E5V as an external power supply

When powered by V_{IN} or E5V, it is still possible to use the ST-LINK for only programming or debugging, but it is mandatory to power the board first using V_{IN} or E5V, then to connect the USB cable to the PC. In this way the enumeration succeeds, thanks to the external power source.

The following power-sequence procedure must be respected:

1. Connect jumper JP6 between pin 1 and pin 2 for E5V or between pin 7 and pin 8 for V_{IN}
2. Check that JP1 is removed
3. Connect the external power source to V_{IN} or E5V
4. Power on the external power supply $7\text{ V} < V_{IN} < 12\text{ V}$ to V_{IN} , or 5 V for E5V
5. Check that the green LED LD6 is turned ON
6. Connect the PC to the USB connector CN1

If this order is not respected, the board may be powered by USB (U5V) first, then by V_{IN} or E5V as the following risks may be encountered:

1. If the board needs more than 300 mA, the PC may be damaged or the current supplied can be limited by the PC. As a consequence the board is not powered correctly.
2. 300 mA is requested during the enumeration phase (since JP1 must be OFF) so there is the risk that the request is rejected and the enumeration does not succeed if the PC cannot provide such current. Consequently the board is not power supplied (LED LD6 remains OFF).

External power supply input: + 3.3 V

If 3.3 V is provided by a shield board, it is worth using the +3.3 V (CN8 pin 7 or CN11 pin 16) directly as power input. In this case the ST-LINK is not powered thus the programming and debugging features are not available.

When the board is powered with +3.3 V, two different configurations are possible:

- ST-LINK is removed (PCB cut)
- SB6 (3.3 V regulator) and JP3 (NRST) are OFF

7.5.3 External power supply output

When powered by USB, V_{IN} or E5V, the +5 V (CN8 pin 9 or CN11 pin 18) can be used as output power supply for an ST Zio shield or an extension board. In this case the maximum current of the power source specified in [Table 6: External power sources](#) must be respected.

The +3.3 V (CN8 pin 7 or CN11 pin 16) can also be used as power supply output. The current is limited by the maximum current capability of the regulator U6 (500 mA max).

7.5.4 SMPS power supply

Power figures in Run Mode are significantly improved, by generating V_{core} logic supply from the external DC/DC converter (this function is only available on '-P' suffixed boards).

Board is populated with two different SMPS mounted on U15 and U16:

- SMPS U15 allows to dynamically supply the V_{DD_1V2} pins in Run mode at 1.1 V with a maximum current of 30 mA. For the NUCLEO-L4R5ZI-P, the V_{DD_1V2} pins in Run mode are supplied at 1.2 V with a maximum current of 40 mA.

- SMPS U16 allows to supply the V_{DD_MCU} pins at 1.8 V with a maximum current of 50 mA. When SB125 is opened and SB120 closed, the SMPS can deliver higher current but with higher consumption. This SMPS is disabled by default (See [Table 10: Configuration of the solder bridges and jumpers](#)).

V_{DD_MCU} solder bridge configuration:

- 3.3 V (default): SB122 closed, SB121 and SB127 open
- 1.8 V: SB122 open, and SB121 and SB127 closed (best ULPBench score)

Caution: The power sequence is not respected when using 1V8 MCU_VDD. Refer to the *Getting started with STM32L4 Series and STM32L4+ Series hardware development* application note (AN4555), and to the corresponding STM32L4 Series and STM32L4+ Series product datasheets.

Note: The ST-LINK is still available in this configuration as a result of level shifter U14.

7.6 LEDs

User LD1: a green user LED is connected to the STM32 I/O PC7 (SB124 ON and SB123 OFF) or PA5 (SB123 ON and SB124 OFF) corresponding to the ST Zio D13. It only works when V_{CC_MCU} is 3.3 V.

User LD2: a blue user LED is connected to PB7.

User LD3: a red user LED is connected to PB14.

These user LEDs are on when the I/O is HIGH value, and are off when the I/O is LOW.

LD4 COM: the tricolor LED LD4 (green, orange and red) provides information about ST-LINK communication status. LD4 default color is red. LD4 turns to green to indicate that the communication is in progress between the PC and the ST-LINK/V2-1, with the following setup:

- Slow blinking red/off: at power-on before USB initialization
- Fast blinking red/off: after the first correct communication between PC and ST-LINK/V2-1 (enumeration)
- Red LED on: when the initialization between the PC and ST-LINK/V2-1 is complete
- Green LED on: after a successful target communication initialization
- Blinking red/green: during communication with target
- Green on: communication finished and successful
- Orange on: communication failure

LD5 USB power fault: LD5 indicates that the board power consumption on USB exceeds 500 mA, consequently the user must power the board using an external power supply.

LD6 PWR: the green LED indicates that the STM32 part is powered and +5 V power is available on CN8 pin 9 and CN11 pin 18.

LD7 and LD8 USB FS: refer to [Section 7.12: USB FS OTG](#).

Note:1 LD1 is connected to U8 and it is driven by PC7 or PA5 which may be changed to 1.8 V I/O, so LD1 cannot be lit when V_{DD} is set to 1.8 V.

Note:2 LD2, LD3 cannot work with $V_{DD_MCU} = 1.8$ V

7.7 Push-buttons

B1 USER: the user button is connected to the I/O PC13 by default (Tamper support, SB197 ON and SB178 OFF) or PA0 (Wakeup support, SB178 ON and SB197 OFF) of the STM32.

B2 RESET: this push-button is connected to NRST and is used to RESET the STM32.

7.8 JP5 (IDD)

The jumper JP5, labeled IDD, is used to measure the STM32 microcontroller consumption by removing the jumper and by connecting an ammeter:

- JP5 ON: STM32 is powered (default)
- JP5 OFF: an ammeter must be connected to measure the STM32 current. If there is no ammeter, the STM32 is not powered

7.9 OSC clock

7.9.1 OSC clock supply

There are four ways to configure the pins corresponding to the external high-speed clock (HSE):

- **HSE not used (Default):** PF0/PH1 and PF1/PH1 are used as GPIOs instead of as clock. The configuration must be:
 - SB147 and SB156 ON
 - SB109 and SB148 (MCO) OFF
 - SB12 and SB13 removed
- **MCO from ST-LINK:** MCO output of ST-LINK is used as input clock. This frequency cannot be changed, it is fixed at 8 MHz and connected to the
- PF0/PH0-OSC_IN of STM32 microcontroller. The configuration must be:
 - SB147 OFF
 - SB109 and SB148 ON
 - SB12 and SB13 OFF
- **HSE on-board oscillator from X3 crystal (not provided):** for typical frequencies and its capacitors and resistors, refer to the STM32 microcontroller datasheet and for the oscillator design guide refer to the *Oscillator design guide for STM8S, STM8A and STM32 microcontrollers* Application note (AN2867). The X3 crystal has the following characteristics: 8 MHz, 8 pF, 20 ppm. It is recommended to use the NX3225GD-8.000M-EXS00A-CG04874 crystal manufactured by NIHON DEMPA KOGYO CO., LTD. The configuration must be:
 - SB147 and SB156 OFF
 - SB12 and SB13 soldered
 - C37 and C38 soldered with 4.3 pF capacitors
 - SB109 and SB148 OFF

- **Oscillator from external PF0/PH0:** from an external oscillator through the pin 29 of the CN11 connector. The configuration must be:
 - SB147 ON
 - SB109 and SB148 OFF
 - SB12 and SB13 removed

7.10 OSC 32 KHz clock supply

There are three ways to configure the pins corresponding to low-speed clock (LSE):

- **On-board oscillator (Default):** X2 crystal. Refer to the *Oscillator design guide for STM8S, STM8A and STM32 microcontrollers* Application note (AN2867) for oscillator design guide for STM32 microcontrollers. It is recommended to use the NX3214SA-32.768KHZ-EXS00A-MU00525 (32.768 KHz, 6 pF load capacitance, 200 ppm) crystal from Nihon Dempa Kogyo CO, LTD.
- **Oscillator from external PC14:** from external oscillator through the pin 25 of CN11 connector. The configuration must be:
 - SB145 and SB146 ON
 - R39 and R40 removed
- **LSE not used:** PC14 and PC15 are used as GPIOs instead of low-speed clock. The configuration must be:
 - SB145 and SB146 ON
 - R39 and R40 removed

7.11 LPUART1 communication

The LPUART1 interface available on PG7 and PG8 of the STM32 can be connected to the ST-LINK or to the ST morpho connector. Another option to do this connection is to set the related solder bridges. By default the LPUART1 communication between the target STM32 and the ST-LINK is enabled, to support the Virtual COM port (SB130 and SB131 ON). Refer to [Table 8](#).

Table 8. LPUART1 pin configuration

Pin name	Function	Virtual COM port (default configuration)	ST morpho connection
PG7	LPUART1 TX	SB131 ON and SB195 OFF	SB131 OFF and SB195 ON
PG8	LPUART1 RX	SB130 ON and SB193 OFF	SB130 OFF and SB193 ON

7.12 USB FS OTG

The STM32 Nucleo-144 board supports the USB OTG as host or as device-full-speed communication through a USB Micro-AB connector (CN14) and USB power switch (U12) connected to V_{BUS} .

Warning: The USB Micro-AB connector (CN14) cannot power a Nucleo-144 board. To avoid damaging the STM32, it is mandatory to power the board before connecting a USB cable on CN14. Otherwise there is a risk of current injection on STM32 I/Os.

A green LED LD8 lits up in one of these cases:

- Power switch (U12) is ON and STM32 Nucleo-144 board works as a USB host
- V_{BUS} is powered by another USB host when the STM32 Nucleo-144 board works as a USB device.

The red LED LD7 lits up if overcurrent occurs when +5 V is enabled on V_{BUS} in USB host mode.

Note:1 It is recommended to power the Nucleo-144 board with an external power supply when using the USB OTG or the host function.

Note:2 JP4 must be closed when using the USB OTG FS.

Note:3 Limitation: when the cable is not connected, PA9 (V_{BUS}) is not floating, because internal pull up of PA12 (D+) impacts PA9 through ESD protection part USBLC6-2SC6 (U13).

For pin configuration refer to [Table 9](#).

Table 9. USB pin configuration

Pin name	Function	Configuration when using USB connector	Configuration when using ST morpho connector	Remark
PA8	USB SOF	-	-	Test point TP1
PA9	USB V_{BUS}	SB135 ON	SB135 OFF	-
PA10	USB ID	SB134 ON	SB134 OFF	-
PA11	USB DM	SB142 ON	SB142 OFF	-
PA12	USB DP	SB143 ON	SB143 OFF	-
PG6	USB GPIO OUT	OTG:SB201 OFF, SB200 ON	OTG:SB200 OFF	OTG:USB power switch control
PG5	USB GPIO IN	JP4 ON, SB199 OFF SB198 ON	JP4 OFF	USB overcurrent alarm

7.13 Solder bridges and jumpers

SBxx are located on top layer and SB1xx-SB2xx on bottom layer of the STM32 Nucleo-144 board. The configuration of the solder bridges and jumpers is showed in [Table 10](#).

Table 10. Configuration of the solder bridges and jumpers

Bridge/jumper	State ⁽¹⁾	Description
SB5 (+3V3_PER)	ON	Peripheral power +3V3_PER is connected to +3.3 V.
	OFF	Peripheral power +3V3_PER is not connected.
SB6 (3.3 V)	ON	Output of voltage regulator LD39050PU33R is connected to 3.3 V.
	OFF	Output of voltage regulator LD39050PU33R is not connected.
SB195, SB193 (GPIO)	ON	PG7 and PG8 on STM32 are connected to ST morpho connectors CN12. If these pins are used on ST morpho connectors, SB130 and SB131 should be OFF.
	OFF	PG7 and PG8 on STM32 are disconnected to ST morpho connectors CN12.
SB131, SB130 (ST-LINK-USART)	ON	PA2 and PA3 on ST-LINK STM32F103CBT6 are connected to PG7 and PG8 to enable the Virtual COM port. Thus PG7 and PG8 on ST morpho connectors cannot be used.
	OFF	PA2 and PA3 on ST-LINK STM32F103CBT6 are disconnected to PG7 and PG8 on STM32.
SB152 (V _{DDA})	ON	V _{DDA} on STM32 MCU is connected to V _{DD} .
	OFF	V _{DDA} on STM32 MCU is disconnected to V _{DD} .
SB100,102,104,106 (DEFAULT)	ON	Reserved, do not modify.
SB101,103,105,107 (RESERVED)	OFF	Reserved, do not modify.
SB141 (SWO)	ON	SWO signal of the STM32 (PB3) is connected to ST-LINK SWO input.
	OFF	SWO signal of STM32 is not connected.
SB110, SB111, SB112 (IOREF)	OFF, OFF, ON	IOREF is connected to V _{DD_MCU} .
	ON, OFF, OFF	IOREF is connected to +3.3 V.
	OFF, ON, OFF	IOREF is connected to +3V3_PER.
SB119 (V _{REF+})	OFF	Pin 6 of CN7 and Pin 7 of CN12 are disconnected to V _{REF+} on STM32.
	ON	Pin 6 of CN7 and Pin 7 of CN12 are connected to V _{REF+} on STM32.
SB137 (SDMMC_D0), SB136 (SDMMC_D1)	ON	These pins are connected to ST morpho connector CN12.
	OFF	These pins are disconnected from ST morpho connector CN12 to avoid stub of SDMMC data signals on PCB.

Table 10. Configuration of the solder bridges and jumpers (continued)

Bridge/jumper	State ⁽¹⁾	Description
SB124, SB123 (LD1-LED)	ON, OFF	Green user LED LD1 is connected to PC7.
	OFF, ON	Green user LED LD1 is connected to D13 of ARDUINO® signal (PA5).
	OFF, OFF	Green user LED LD1 is not connected.
	ON, ON	Forbidden.
SB172 (Legacy) SB173 (SMPS) (LD2-LED)	OFF, OFF	Blue user LED LD2 and morpho connector CN11 pin 21 not connected to PB7.
	ON, OFF	Blue user LED LD2 and morpho connector CN11 pin 21 connected to PB7 (Legacy configuration).
	OFF, ON	Blue user LED LD2 and morpho connector CN11 pin 21 connected to PB7 (external SMPS configuration).
	ON, ON	Forbidden.
SB132 (LD3-LED)	ON	Red user LED LD3 is connected to PB14.
	OFF	Red user LED LD3 is not connected.
SB145, 146 (X2 crystal)	OFF	PC14, PC15 are not connected to ST morpho connector CN11. (X2 used to generate 32 kHz clock).
	ON	PC14, PC15 are connected to ST morpho connector CN11. (R39 and R40 must be removed).
SB147 (PH0), SB156 (PH1) (Main clock)	ON, ON	PH0 and PH1 are connected to ST morpho connector CN11. (SB12, SB13 and SB148 must be removed).
	OFF, ON	PH0 is not connected to ST morpho PH1 is connected to ST morpho connector CN11 (MCO is used as main clock for STM32 on PH0).
	OFF, OFF	PH0, PH1 are not connected to ST morpho connector CN11 (X3, C37, C38, SB12 and SB13 provide a clock. In this case SB148 must be removed).
SB109, SB148 (MCO)	OFF	MCO of ST-LINK (STM32F103CBT6) is not connected to PH0 of STM32.
	ON	MCO of ST-LINK (STM32F103CBT6) is connected to PH0 of STM32.
SB12, SB13 (external 8M crystal)	OFF	PH0 and PH1 are not connected to external 8 MHz crystal X3.
	ON	PH0 and PH1 are connected to external 8 MHz crystal X3.
SB154 (V _{BAT})	ON	V _{BAT} pin of STM32 is connected to V _{DD} .
	OFF	V _{BAT} pin of STM32 is not connected to V _{DD} .
SB197, SB178 (B1-USER)	ON, OFF	B1 push-button is connected to PC13.
	OFF, ON	B1 push-button is connected to PA0 (Set SB179 OFF if ST Zio connector is used).
	OFF, OFF	B1 push-button is not connected.

Table 10. Configuration of the solder bridges and jumpers (continued)

Bridge/jumper	State ⁽¹⁾	Description
SB179 (PA0)	ON	PA0 is connected to ST Zio connector (Pin 29 of CN10).
	OFF	PA0 is not connected to ST Zio connector (Pin 29 of CN10).
SB151,SB153-	OFF	Default setting.
	ON	Forbidden.
SB158, SB167 (A _{VDD})	ON, OFF	A _{VDD} on STM32 is connected to V _{DD} .
	OFF, ON	A _{VDD} on STM32 is connected to VDD_MCU.
SB142 (PA11), SB143 (PA12)	ON	These pins are used as D+ and D- on USB connector CN14.
	OFF	These pins are used as GPIOs on ST morpho connectors.
SB149 (V _{REF+})	ON	V _{REF+} on STM32 is connected to A _{VDD} .
	OFF	V _{REF+} on STM32 is disconnected to A _{VDD} .
SB144 (QSPI_IO1)	ON	These pins are connected to ST morpho connector CN11.
	OFF	These pins are disconnected from ST morpho connector CN11 to avoid stub of QSPI_IO1 signals on PCB.
JP2 ⁽²⁾ (STM_RST)	OFF	No incidence on ST-LINK STM32F103CBT6 NRST signal.
	ON	ST-LINK STM32F103CBT6 NRST signal is connected to GND (ST-LINK reset to reduce power consumption).
JP3 (NRST)	ON	Board RESET signal (NRST) is connected to ST-LINK reset control I/O (T_NRST).
	OFF	Board RESET signal (NRST) is not connected to ST-LINK reset control I/O (T_NRST).
SB122, SB121, SB127 (V _{DD_MCU})	ON, OFF,OFF	V _{DD_MCU} is connected to V _{DD} directly (3.3 V fixed).
	OFF, ON, ON	V _{DD_MCU} is connected to output of DC-DC (1.8 V fixed).

1. Default SBx state is shown in bold.

2. The jumper JP2 is not mounted on the board by default.

All the other solder bridges present on the STM32 Nucleo-144 board are used to configure several I/Os and power supply pins for compatibility of features and pinout with the target STM32 supported.

STM32 Nucleo-144 boards are delivered with the solder bridges configured according to the target STM32 supported.

7.14 Expansion connectors

For each STM32 Nucleo-144 board, [Figure 11](#), [Figure 12](#), [Figure 13](#), [Figure 14](#), [Figure 15](#) and [Figure 16](#) show the signals connected by default to the ST Zio connectors (CN7, CN8, CN9 and CN10), including the support for ARDUINO® Uno V3.

Figure 11. NUCLEO-L496ZG

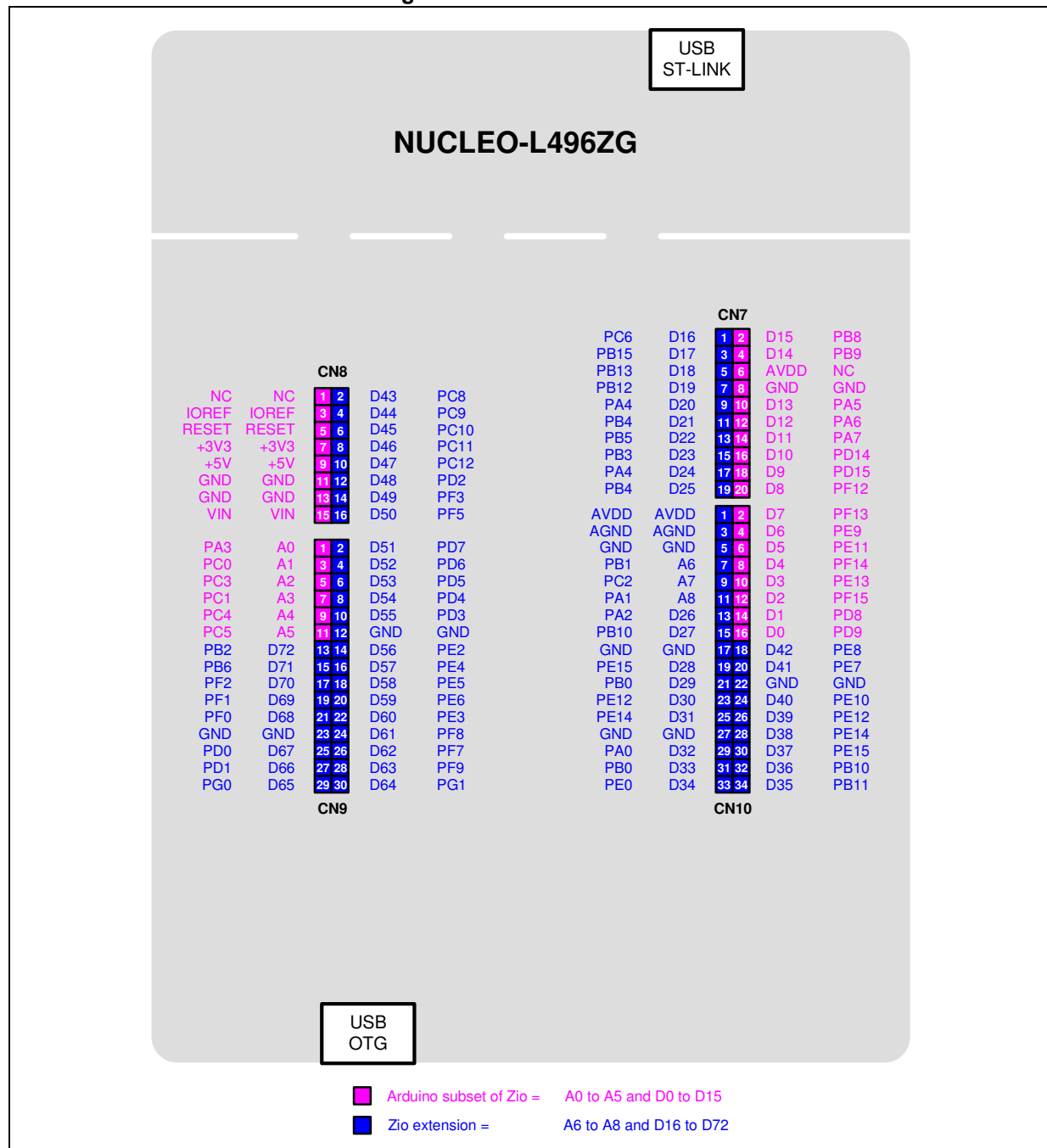


Figure 12. NUCLEO-L496ZG-P

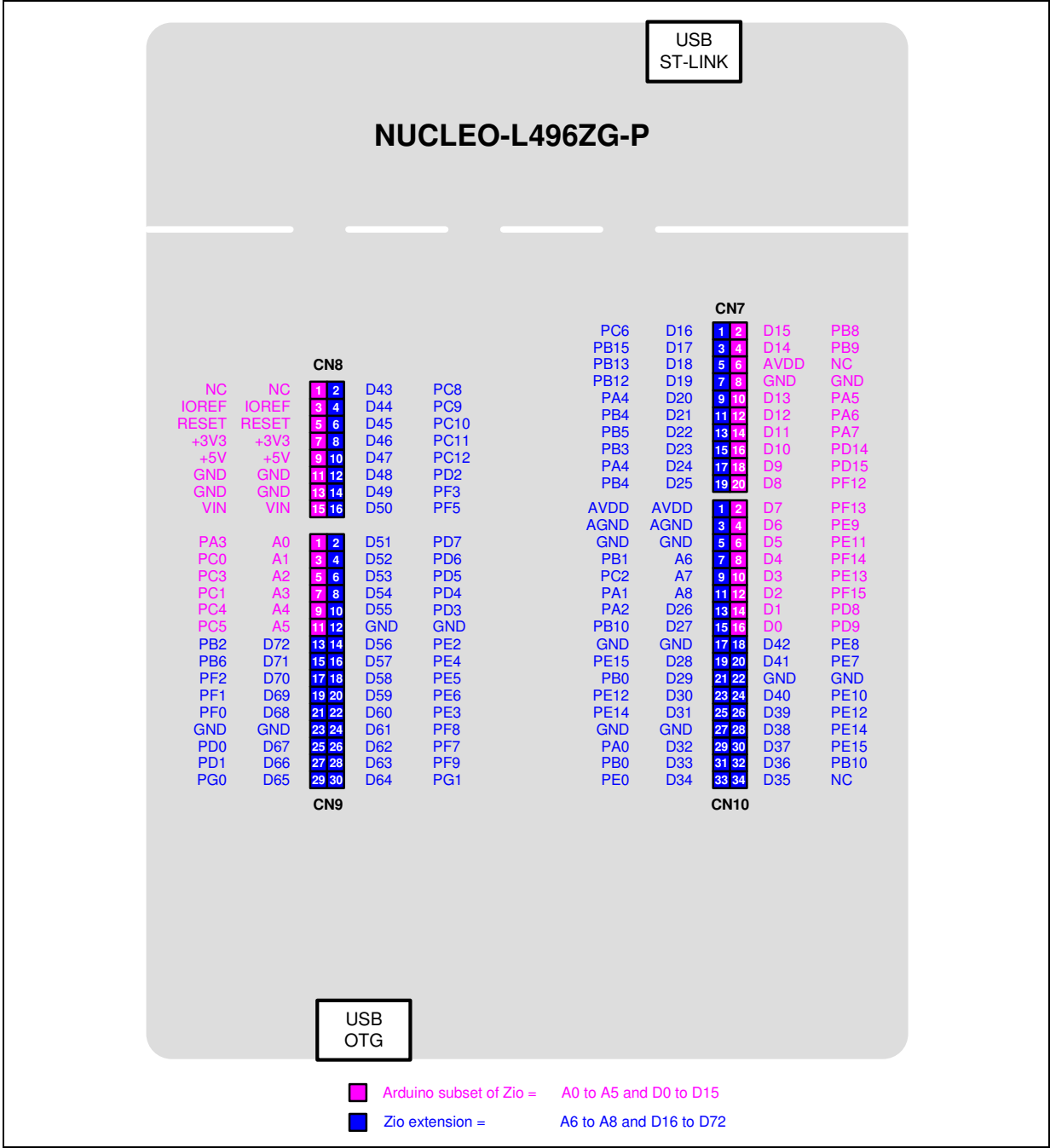


Figure 13. NUCLEO-L4A6ZG

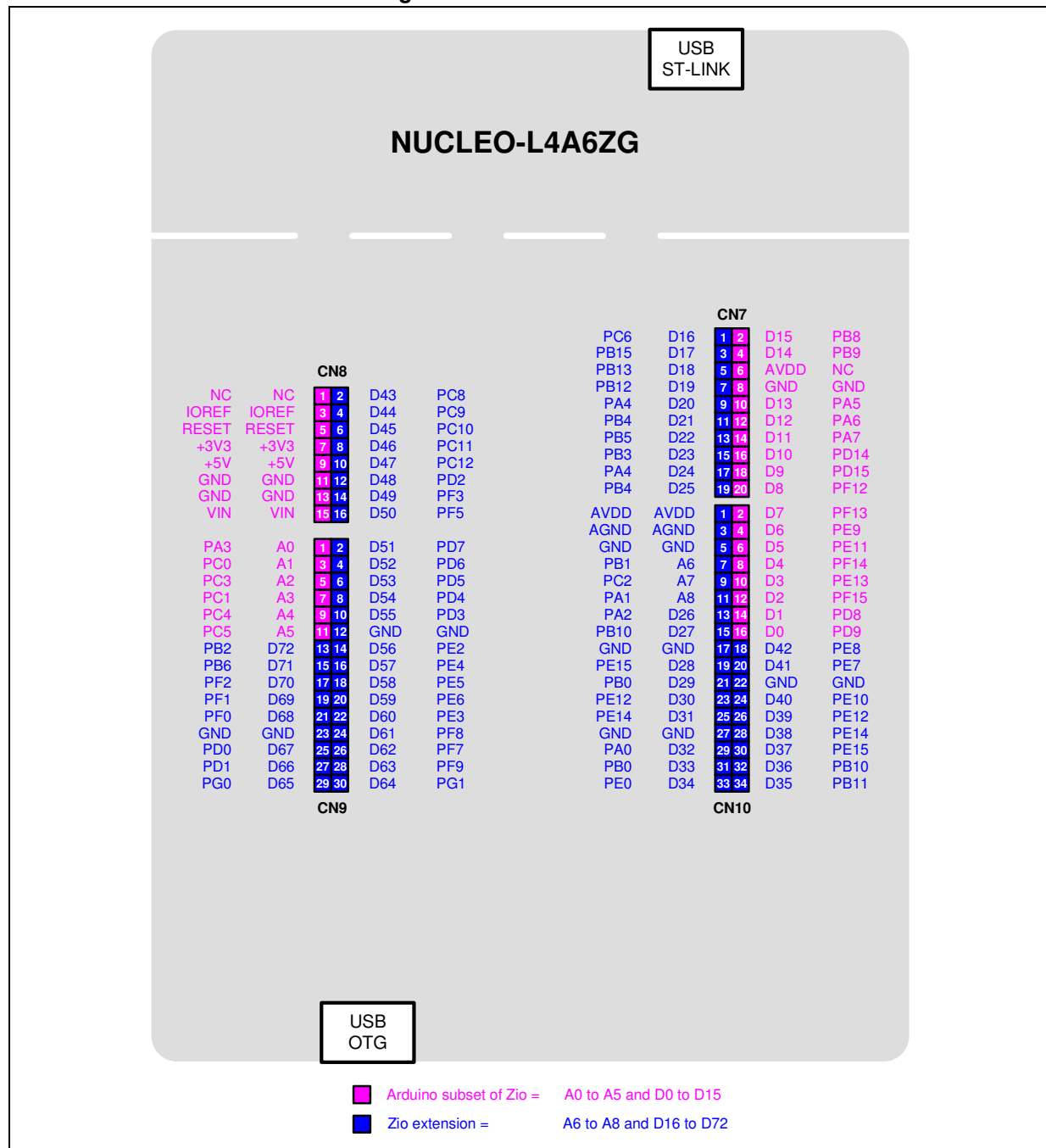


Figure 14. NUCLEO-L4P5ZG

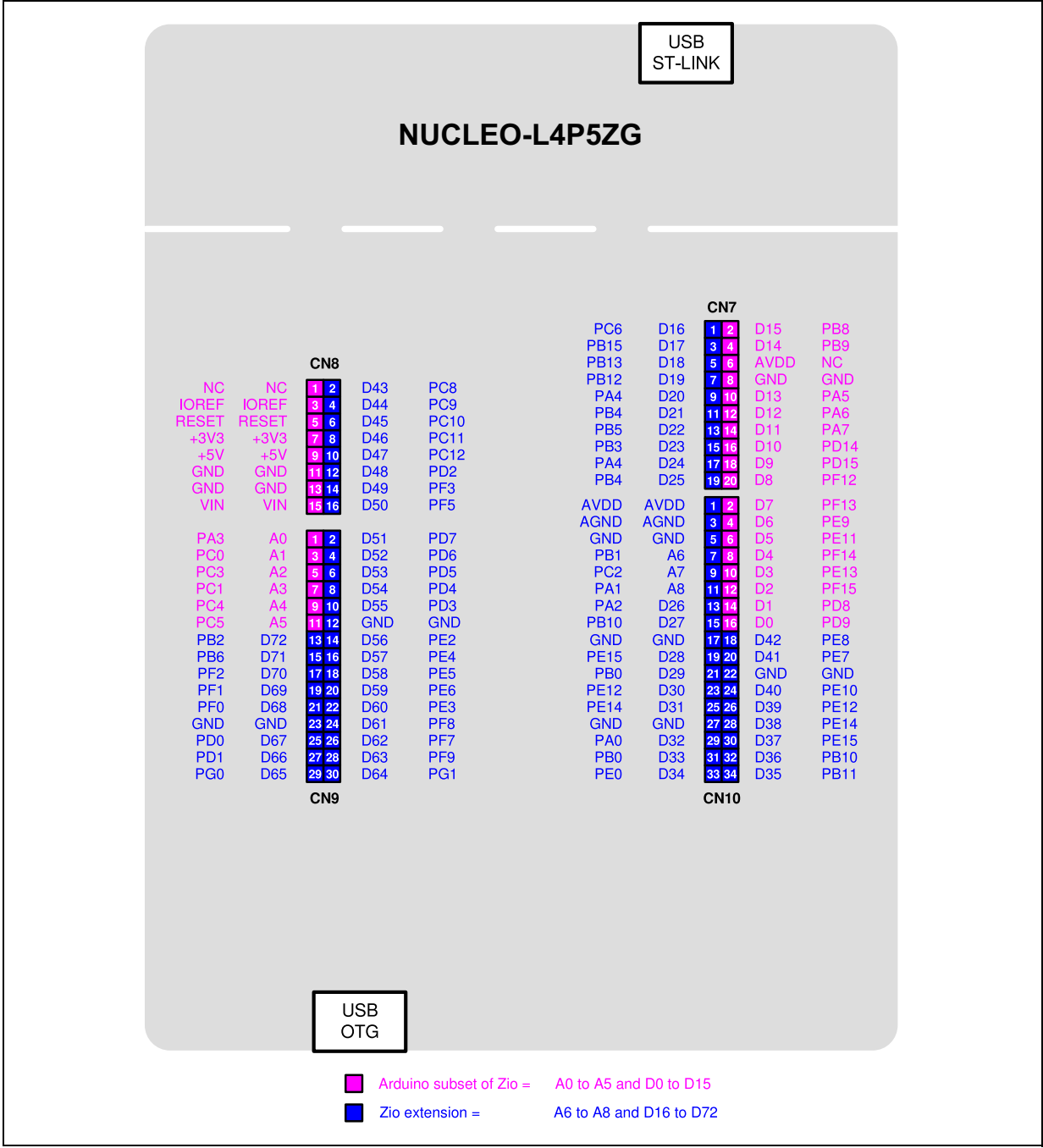


Figure 15. NUCLEO-L4R5ZI

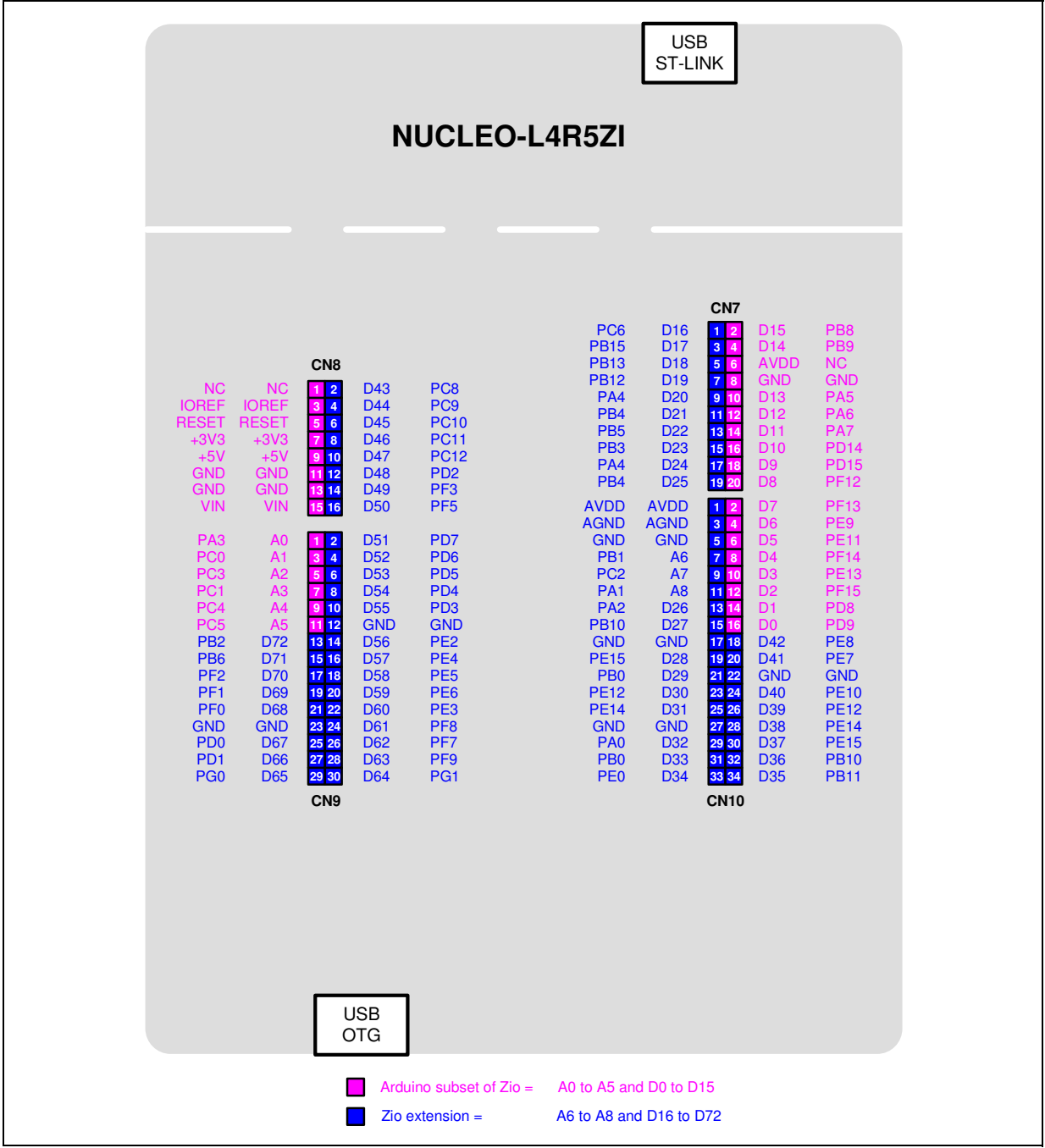
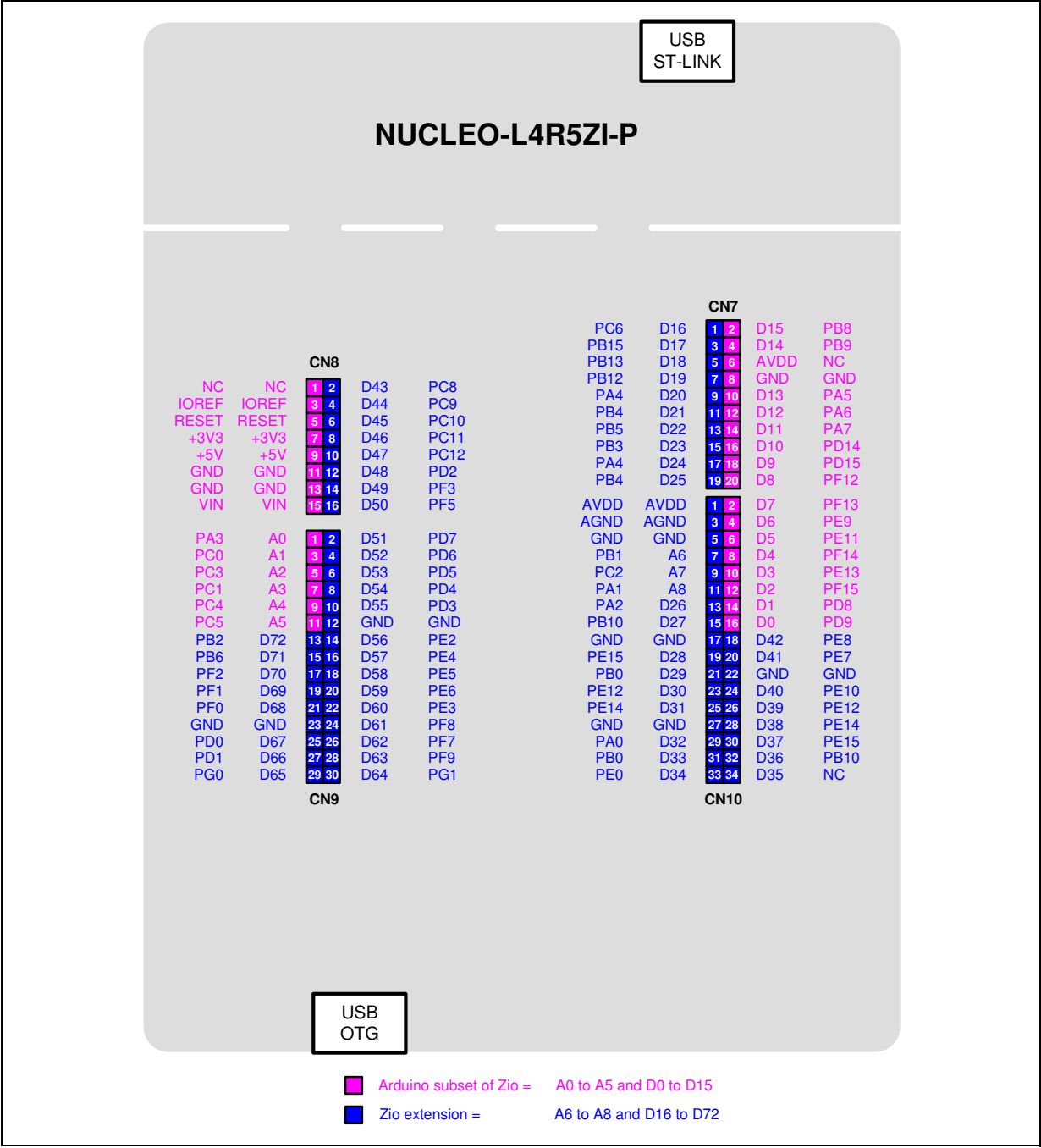


Figure 16. NUCLEO-L4R5ZI-P



7.15 ST Zio connectors

The connectors CN7, CN8, CN9 and CN10 are female on top side and male on bottom side of the STM32 Nucleo-144 board. They include support for ARDUINO® Uno V3. Most shields designed for ARDUINO® Uno V3 can fit to the STM32 Nucleo-144 board.

Caution: The I/Os of the STM32 microcontroller are 3.3 V compatible, while ARDUINO® Uno V3 is 5 V compatible.

[Table 11](#) shows the STM32 pin assignments on the ST Zio connectors for the NUCLEO-L496ZG, NUCLEO-L496ZG-P, NUCLEO-L4A6ZG, NUCLEO-L4P5ZG, NUCLEO-L4R5ZI and NUCLEO-L4R5ZI-P.

Table 11. ST Zio connectors pin assignments

	Pin	Pin name	Signal name	STM32 pin	Function	Remark	
Left connectors							
CN8	1	NC	NC	-	-	Arduino support	
	3	IOREF	IOREF		3.3 V Ref		
	5	RESET	RESET	NRST	RESET		
	7	+3.3 V	+3.3 V	-	3.3 V input/output		
	9	+5 V	+5 V		5 V output		
	11	GND	GND		ground		
	13	GND	GND				
	15	V _{IN}	V _{IN}		Power input		
	2	D43	SDMMC_D0	PC8	SDMMC/I2S_A	-	
	4	D44	SDMMC_D1/ I2S_A_CKIN	PC9			
	6	D45	SDMMC_D2	PC10			
	8	D46	SDMMC_D3	PC11			
	10	D47	SDMMC_CK	PC12			
	12	D48	SDMMC_CMD	PD2			
	14	D49	I/O	PF3	I/O		
	16	D50	I/O	PF5			
CN9	1	A0	ADC	PA3	ADC12_IN8	Arduino support	
	3	A1	ADC	PC0	ADC123_IN1		
	5	A2	ADC	PC3	ADC123_IN4		
	7	A3	ADC	PC1	ADC123_IN2		
	9	A4 ⁽¹⁾	ADC	PC4	ADC12_IN13		
	11	A5 ⁽¹⁾	ADC	PC5	ADC12_IN14		
	13	D72	COMP1_INP	PB2	COMP	-	
	15	D71	COMP2_INP	PB6	I2C_2		
	17	D70	I2C_B_SMBA	PF2			
	19	D69	I2C_B_SCL	PF1			
	21	D68	I2C_B_SDA	PF0			
	23	GND	GND	-	ground		
	25	D67	CAN_RX	PD0	CAN_1		
	27	D66	CAN_TX	PD1			
	29	D65	I/O	PG0	I/O		
	2	D51	USART_B_SCLK	PD7	USART_2		

Table 11. ST Zio connectors pin assignments (continued)

	Pin	Pin name	Signal name	STM32 pin	Function	Remark
CN9	4	D52	USART_B_RX	PD6	USART_2	-
	6	D53	USART_B_TX	PD5		
	8	D54	USART_B_RTS	PD4		
	10	D55	USART_B_CTS	PD3		
	12	GND	GND	-	ground	
	14	D56	SAI_A_MCLK	PE2	SAI_1_A	
	16	D57	SAI_A_FS	PE4		
	18	D58	SAI_A_SCK	PE5		
	20	D59	SAI_A_SD	PE6		
	22	D60	SAI_B_SD	PE3	SAI_1_B	
	24	D61	SAI_B_SCK	PF8		
	26	D62	SAI_B_MCLK	PF7		
	28	D63	SAI_B_FS	PF9		
	30	D64	I/O	PG1	I/O	
Right connectors						
CN7	1	D16	I2S_A_MCK	PC6	SAI_2_A	-
	3	D17	I2S_A_SD	PB15		
	5	D18	I2S_A_CK	PB13		
	7	D19	I2S_A_WS	PB12		
	9	D20	I2S_B_WS	PA4	SAI_1_B/ SPI3 ⁽²⁾	
	11	D21	I2S_B_MCK	PB4		
	13	D22	I2S_B_SD/ SPI_B_MOSI	PB5		
	15	D23	I2S_B_CK/ SPI_B_SCK	PB3		
	17	D24	SPI_B_NSS	PA4		
	19	D25	SPI_B_MISO	PB4		
	2	D15	I2C_A_SCL	PB8	I2C1_SCL	Arduino support
	4	D14	I2C_A_SDA	PB9	I2C1_SDA	
	6	AREF	AREF	-	VREF+ ⁽³⁾	
	8	GND	GND		ground	
	10	D13	SPI_A_SCK	PA5	SPI1_SCK	
	12	D12	SPI_A_MISO	PA6	SPI1_MISO	
	14	D11	SPI_A_MOSI/ TIM_E_PWM1	PA7	SPI1_MOSI/ TIM17_CH1	

Table 11. ST Zio connectors pin assignments (continued)

	Pin	Pin name	Signal name	STM32 pin	Function	Remark
CN7	16	D10	SPI_A_CS/ TIM_B_PWM3	PD14	SPI1_CS/ TIM4_CH3	Arduino support
	18	D9	TIMER_B_PWM2	PD15	TIM4_CH4	
	20	D8	I/O	PF12	-	
CN10	1	AVDD	AVDD	-	Analog VDD	-
	3	AGND	AGND		Analog ground	
	5	GND	GND		ground	
	7	A6	ADC_A_IN	PB1	ADC12_IN16	
	9	A7	ADC_B_IN	PC2	ADC123_IN3	
	11	A8	ADC_C_IN	PA1	ADC12_IN6	
	13	D26	QSPI_CS	PA2 ⁽⁴⁾	QSPI_BK1	
	15	D27	QSPI_CLK	PB10 ⁽⁴⁾	QSPI_CLK	
	17	GND	GND	-	ground	
	19	D28	QSPI_BK1_IO3	PE15 ⁽⁴⁾	QSPI_BK1	
	21	D29	QSPI_BK1_IO1	PB0 ⁽⁴⁾		
	23	D30	QSPI_BK1_IO0	PE12 ⁽⁴⁾		
	25	D31	QSPI_BK1_IO2	PE14 ⁽⁴⁾		
	27	GND	GND	-	ground	
	29	D32	TIMER_C_PWM1	PA0 ⁽⁴⁾	TIM2_CH1	
	31	D33	TIMER_D_PWM1	PB0 ⁽⁴⁾	TIM3_CH3	
	33	D34	TIMER_B_ETR	PE0	TIM4_ETR	
	2	D7	I/O	PF13	-	Arduino support
	4	D6	TIMER_A_PWM1	PE9	TIM1_CH1	
	6	D5	TIMER_A_PWM2	PE11	TIM1_CH2	
	8	D4	I/O	PF14	-	
	10	D3	TIMER_A_PWM3	PE13	TIM1_CH3	
	12	D2	I/O	PF15	-	
	14	D1	USART_A_TX	PD8	USART3	
	16	D0	USART_A_RX	PD9		
	18	D42	TIMER_A_PWM1N	PE8	TIM1_CH1N	-
	20	D41	TIMER_A_ETR	PE7	TIM1_ETR	
	22	GND	GND	-	ground	
	24	D40	TIMER_A_PWM2N	PE10	TIM1_CH2N	
	26	D39	TIMER_A_PWM3N	PE12 ⁽⁴⁾	TIM1_CH3N	

Table 11. ST Zio connectors pin assignments (continued)

	Pin	Pin name	Signal name	STM32 pin	Function	Remark
CN10	28	D38	I/O	PE14 ⁽⁴⁾	I/O	-
	30	D37	TIMER_A_BKIN1	PE15 ⁽⁴⁾	TIM1_BKIN1	
	32	D36	TIMER_C_PWM2	PB10 ⁽⁴⁾	TIM2_CH3	
	34	D35	TIMER_C_PWM3	PB11 ⁽⁵⁾	TIM2_CH4	

1. To be compatible with the previous versions of the ARDUINO® Uno V3 board, A4/A5 do not support I²C.
2. I2S_B group has the same port as SAI_B group, but they have a different pin map.
3. V_{REF+} is not connected to CN7 by default.
4. QSPI signals (PA2, PB10, PE15, PB0, PE12 and PE14) are shared with timer signals on CN10.
5. PB11 is not available on '-P' suffixed boards.

7.16 ST morpho connector

The ST morpho connector consists in male pin header footprints CN11 and CN12 (not soldered by default). They can be used to connect the STM32 Nucleo-144 board to an extension board or a prototype/wrapping board placed on top of the STM32 Nucleo-144 board. All signals and power pins of the STM32 are available on the ST morpho connector. This connector can also be probed by an oscilloscope, logical analyzer or voltmeter.

[Table 12](#) shows the pin assignments for the STM32 on the ST morpho connector.

Table 12. ST morpho connector pin assignments

CN11 odd pins		CN11 even pins		CN12 odd pins		CN12 even pins	
Pin	Pin name	Pin	Pin name	Pin	Pin name	Pin	Pin name
1	PC10	2	PC11	1	PC9	2	PC8
3	PC12	4	PD2	3	PB8	4	PC6
5	V _{DD}	6	E5V	5	PB9	6	PC5
7	PH3-BOOT0 ⁽¹⁾	8	GND	7	V _{REF+} ⁽²⁾	8	U5V ⁽³⁾
9	PF6	10	-	9	GND	10	PD8
11	PF7	12	IOREF	11	PA5	12	PA12
13	PA13 ⁽⁴⁾	14	RESET	13	PA6	14	PA11
15	PA14 ⁽⁴⁾	16	+3.3 V	15	PA7	16	PB12
17	PA15	18	+5 V	17	PB6	18	PB11
19	GND	20	GND	19	PC7	20	GND
21	PB7	22	GND	21	PA9	22	PB2
23	PC13	24	V _{IN}	23	PA8	24	PB1
25	PC14	26	-	25	PB10	26	PB15
27	PC15	28	PA0	27	PB4	28	PB14
29	PH0	30	PA1	29	PB5	30	PB13

Table 12. ST morpho connector pin assignments (continued)

CN11 odd pins		CN11 even pins		CN12 odd pins		CN12 even pins	
Pin	Pin name	Pin	Pin name	Pin	Pin name	Pin	Pin name
31	PH1	32	PA4	31	PB3	32	AGND
33	V _{BAT}	34	PB0	33	PA10	34	PC4
35	PC2	36	PC1	35	PA2	36	PF5
37	PC3	38	PC0	37	PA3	38	PF4
39	PD4	40	PD3	39	GND	40	PE8
41	PD5	42	PG2	41	PD13	42	PF10
43	PD6	44	PG3	43	PD12	44	PE7
45	PD7	46	PE2	45	PD11	46	PD14
47	PE3	48	PE4	47	PE10	48	PD15
49	GND	50	PE5	49	PE12	50	PF14
51	PF1	52	PF2	51	PE14	52	PE9
53	PF0	54	PF8	53	PE15	54	GND
55	PD1	56	PF9	55	PE13	56	PE11
57	PD0	58	PG1	57	PF13	58	PF3
59	PG0	60	GND	59	PF12	60	PF15
61	PE1	62	PE6	61	PG14	62	PF11
63	PG9	64	PG15 ⁽⁵⁾	63	GND	64	PE0
65	PG12	66	PG10	65	PD10	66	PG8
67	-	68	PG13	67	PG7	68	PG5
69	PD9	70	PG11	69	PG4	70	PG6

1. Default state of BOOT0 is 0. It can be set to 1 when a jumper is plugged on the pins 5-7 of CN11.
2. V_{REF+} is not connected to CN12 by default.
3. U5V is the +5V power signal, coming from the ST-LINK/V2-1 USB connector. It rises before the +5V signal of the board.
4. PA13 and PA14 are shared with SWD signals connected to ST-LINK/V2-1. If ST-LINK part is not cut, it is not recommended to use them as I/O pins.
5. PB11 and PG15 are not available on the '-P' suffixed boards.

7.17 Bootloader limitation

7.17.1 Bootloader operation

Boot from system Flash memory runs bootloader code stored in the system Flash memory protected against writing and erasing. This allows in-system programming (ISP) with flashing of the STM32 user Flash memory. It also allows writing data into the RAM. The data is written via the USART, SPI, I²C, USB or CAN communication interface.

7.17.2 Bootloader identification

The bootloader version is identified by reading the bootloader ID at address 0x1FFF 6FFE:

- the bootloader ID is 0x91 for bootloader version V9.1.
- the bootloader ID is 0x92 for bootloader version V9.2.

7.17.3 Bootloader limitation

The limitation existing in bootloader V9.1 causes user Flash memory data to get randomly corrupted when written via the bootloader SPI interface.

As a result, during bootloader SPI Write Flash operation, some random 64-bits (2 double-words) may be left blank at 0xFF.

7.17.4 Affected parts

The STM32L496ZGT6, STM32L496ZGT6P, and STM32L4R5ZIT6 parts respectively soldered on the NUCLEO-L496ZG, NUCLEO-L496ZG-P, and NUCLEO-L4R5ZI main boards are marked with a date code corresponding to their manufacturing dates.

The STM32L496ZGT6, STM32L496ZGT6P, and STM32L4R5ZIT6 parts with a date code prior or equal to week 37 of 2017 are fitted with bootloader V9.1. They are affected by the limitation described in [Section 7.17.3](#) and require one of the workarounds proposed in [Section 7.17.5](#).

The parts with a date code equal to week 38 of 2017 or later contain bootloader V9.2. They are not affected by the limitation.

The STM32L4P5ZGT6 soldered on the NUCLEO-L4P5ZG main board is fitted with bootloader V9.0.

To locate the visual date code information on the STM32L496ZGT6, STM32L496ZGT6P, or STM32L4R5ZIT6 package, refer to the Package Information section in the data sheet available at www.st.com. The date code related portion of the package marking is in the Y WW format, where Y is the last digit of the year and WW is the week number. For example, a part manufactured in week 38 of 2017 bears the 7 38 date code.

7.17.5 Workarounds

Three workarounds are proposed to overcome the limitation existing with bootloader V9.1.

Workaround 1

Add a delay between sending a Write command and its ACK request. The delay duration must be the duration of the 256-byte Flash-write time.

Workaround 2

Read back after each write operation (256 bytes or end of user code flashing) and, in case of error, perform the write operation again.

Workaround 3

Using the bootloader, load a patch code in RAM to write in Flash memory through the same Write Memory write protocol as the bootloader. This patch is provided by STMicroelectronics. The patch code is available for download from the www.st.com website with a *readme.txt* file containing the instructions of use.

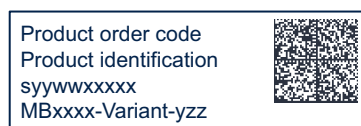
8 Product information

8.1 Product marking

The product and each board composing the product are identified with one or several stickers. The stickers, located on the top or bottom side of each PCB, provide product information:

- Main board featuring the target device: product order code, product identification, serial number, and board reference with revision.

Single-sticker example:



Dual-sticker example:



- Other boards if any: board reference with revision and serial number.

Examples:



On the main board sticker, the first line provides the product order code, and the second line the product identification.

On all board stickers, the line formatted as "*MBxxxx-Variant-yyz*" shows the board reference "*MBxxxx*", the mounting variant "*Variant*" when several exist (optional), the PCB revision "*y*", and the assembly revision "*zz*", for example B01. The other line shows the board serial number used for traceability.

Products and parts labeled as "*ES*" or "*E*" are not yet qualified or feature devices that are not yet qualified. STMicroelectronics disclaims any responsibility for consequences arising from their use. Under no circumstances will STMicroelectronics be liable for the customer's use of these engineering samples. Before deciding to use these engineering samples for qualification activities, contact STMicroelectronics' quality department.

"*ES*" or "*E*" marking examples of location:

- On the targeted STM32 that is soldered on the board (for an illustration of STM32 marking, refer to the STM32 datasheet *Package information* paragraph at the www.st.com website).
- Next to the evaluation tool ordering part number that is stuck or silk-screen printed on the board.

Some boards feature a specific STM32 device version, which allows the operation of any bundled commercial stack/library available. This STM32 device shows a "*U*" marking option at the end of the standard part number and is not available for sales.

To use the same commercial stack in their applications, the developers might need to purchase a part number specific to this stack/library. The price of those part numbers includes the stack/library royalties.

8.2 Product history

Table 13. Product history

Order code	Product identification	Product details	Product change description	Product limitations
NUCLEO-L496ZG	NUCLEOL496ZG/	MCU: – STM32L496ZGT6U silicon revision "B"	Initial revision	A4/A5 on ARDUINO® Uno V3 connector CN9 cannot be used as I ² C function.
		MCU errata sheet: – STM32L496xx/4A6xx device errata (ES0335)		
		Board: – MB1312-L476ZG-A01 (main board)		
	NUL496ZG\$AU1	MCU: – STM32L496ZGT6U silicon revision "B"	Packaging: plastic blister replaced by a carton box	A4/A5 on ARDUINO® Uno V3 connector CN9 cannot be used as I ² C function.
		MCU errata sheet: – STM32L496xx/4A6xx device errata (ES0335)		
		Board: – MB1312-L476ZG-A01 (main board)		
NUCLEO-L496ZG-P	NUCLEOL496ZG-P/	MCU: – STM32L496ZGT6PU silicon revision "B"	Initial revision	A4/A5 on ARDUINO® Uno V3 connector CN9 cannot be used as I ² C function.
		MCU errata sheet: – STM32L496xx/4A6xx device errata (ES0335)		
		Board: – MB1312-L476ZG-P-A01 (main board)		
	NUL496ZGP\$AU1	MCU: – STM32L496ZGT6PU silicon revision "B"	Packaging: plastic blister replaced by a carton box	A4/A5 on ARDUINO® Uno V3 connector CN9 cannot be used as I ² C function.
		MCU errata sheet: – STM32L496xx/4A6xx device errata (ES0335)		
		Board: – MB1312-L476ZG-P-A01 (main board)		

Table 13. Product history (continued)

Order code	Product identification	Product details	Product change description	Product limitations
NUCLEO-L4A6ZG	NUL4A6ZG\$AU1	MCU: – STM32L4A6ZGT6U silicon revision "B"	Initial revision	A4/A5 on ARDUINO® Uno V3 connector CN9 cannot be used as I ² C function.
		MCU errata sheet: – STM32L496xx/4A6xx device errata (ES0335)		
		Board: – MB1312-L4A6ZG-A01 (main board)		
	NUL4A6ZG\$AU2	MCU: – STM32L4A6ZGT6U silicon revision "B"	Packaging: plastic blister replaced by a carton box	A4/A5 on ARDUINO® Uno V3 connector CN9 cannot be used as I ² C function.
		MCU errata sheet: – STM32L496xx/4A6xx device errata (ES0335)		
		Board: – MB1312-L4A6ZG-A01 (main board)		
NUCLEO-L4P5ZG	NUL4P5ZG\$AU1	MCU: – STM32L4P5ZGT6 silicon revision "Z"	Initial revision	A4/A5 on ARDUINO® Uno V3 connector CN9 cannot be used as I ² C function.
		MCU errata sheet: – STM32L4P5xx/Q5xx device errata (ES0510)		
		Board: – MB1312-L4P5ZG-A03 (main board)		
	NUL4P5ZG\$AU2	MCU: – STM32L4P5ZGT6 silicon revision "Z"	Packaging: plastic blister replaced by a carton box	A4/A5 on ARDUINO® Uno V3 connector CN9 cannot be used as I ² C function.
		MCU errata sheet: – STM32L4P5xx/Q5xx device errata (ES0510)		
		Board: – MB1312-L4P5ZG-A03 (main board)		

Table 13. Product history (continued)

Order code	Product identification	Product details	Product change description	Product limitations
NUCLEO-L4R5ZI	NUCLEOL4R5ZI/	MCU: – STM32L4R5ZIT6U silicon revision "Y"	Initial revision	A4/A5 on ARDUINO® Uno V3 connector CN9 cannot be used as I ² C function.
		MCU errata sheet: – STM32L4Rxxx and STM32L4Sxxx device errata (ES0393)		
		Board: – MB1312-L4R5ZI-A01 (main board)		
	NUL4R5ZI\$AU1	MCU: – STM32L4R5ZIT6U silicon revision "Y"	Packaging: plastic blister replaced by a carton box	A4/A5 on ARDUINO® Uno V3 connector CN9 cannot be used as I ² C function.
		MCU errata sheet: – STM32L4Rxxx and STM32L4Sxxx device errata (ES0393)		
		Board: – MB1312-L4R5ZI-A01 (main board)		
NUCLEO-L4R5ZI-P	NUCLEOL4R5ZIP/	MCU: – STM32L4R5ZIT6PU silicon revision "Y"	Initial revision	A4/A5 on ARDUINO® Uno V3 connector CN9 cannot be used as I ² C function.
		MCU errata sheet: – STM32L4Rxxx and STM32L4Sxxx device errata (ES0393)		
		Board: – MB1312-L4R5ZI-P-A01 (main board)		
	NUL4R5ZIP\$AU1	MCU: – STM32L4R5ZIT6PU silicon revision "Y"	Packaging: plastic blister replaced by a carton box	A4/A5 on ARDUINO® Uno V3 connector CN9 cannot be used as I ² C function.
		MCU errata sheet: – STM32L4Rxxx and STM32L4Sxxx device errata (ES0393)		
		Board: – MB1312-L4R5ZI-P-A01 (main board)		

8.3 Board revision history

Table 14. Board revision history

Board reference	Board variant and revision	Board change description	Board limitations
MB1312 (main board)	L476ZG-A01 L476ZG-P-A01 L4A6ZG-A01 L4R5ZI-A01 L4R5ZI-P-A01	Initial revision	A4/A5 on ARDUINO® Uno V3 connector CN9 cannot be used as I ² C function.
	L4P5ZG-A03		

9 Compliance statements and conformity declarations

9.1 Federal Communications Commission (FCC) compliance statement

Part 15.19

These devices comply with part 15 of the FCC rules. Operation is subject to the following two conditions: (1) these devices may not cause harmful interference, and (2) these devices must accept any interference received, including interference that may cause undesired operation.

Part 15.21

Any changes or modifications to this equipment not expressly approved by STMicroelectronics may cause harmful interference and void the user's authority to operate this equipment.

Part 15.105

This equipment has been tested and found to comply with the limits for a Class B digital device, pursuant to part 15 of the FCC Rules. These limits are designed to provide reasonable protection against harmful interference in a residential installation. This equipment generates uses and can radiate radio frequency energy and, if not installed and used in accordance with the instructions, may cause harmful interference to radio communications. However, there is no guarantee that interference will not occur in a particular installation. If this equipment does cause harmful interference to radio or television reception which can be determined by turning the equipment off and on, the user is encouraged to try to correct interference by one or more of the following measures:

- Reorient or relocate the receiving antenna.
- Increase the separation between the equipment and receiver.
- Connect the equipment into an outlet on a circuit different from that to which the receiver is connected.
- Consult the dealer or an experienced radio/TV technician for help.

Note: Use only shielded cables.

Responsible party - U.S. contact information

Francesco Doddo
STMicroelectronics, Inc.
200 Summit Drive | Suite 405 | Burlington, MA 01803
USA
Telephone: +1 781-472-9634

9.2 Innovation, Science and Economic Development Canada (ISED) compliance statement

These products comply with the ICES-003 standard class B of the ISED regulation.

ISED Canada ICES-003 Compliance Label: CAN ICES (B)/NMB (B).

Note: Use only shielded cables.

Ces produits sont conformes à la norme NMB-003 classe B de la ISDE.

Étiquette de conformité à la NMB-003 d'ISDE Canada : CAN ICES (B) / NMB (B).

Note: Utiliser uniquement des câbles blindés.

9.3 UKCA conformity

Simplified UK declaration of conformity

Hereby, the manufacturer STMicroelectronics, declares that the equipment types NUCLEOL496ZG, NUCLEO-L496ZG-P, NUCLEO-L4A6ZG, NUCLEO-L4P5ZG, NUCLEO-L4R5ZI, and NUCLEO-L4R5ZI-P are in compliance with the UK Electromagnetic Compatibility Regulations 2016 (UK SI 2016 No. 1091) and with the Restriction of the Use of Certain Hazardous Substances in Electrical and Electronic Equipment Regulations 2012 (UK SI 2012 No. 3032).

Note: Use only shielded cables.

9.4 CE conformity

9.4.1 Simplified EU declaration of conformity

Hereby, STMicroelectronics declares that the equipment types NUCLEOL496ZG, NUCLEO-L496ZG-P, NUCLEO-L4A6ZG, NUCLEO-L4P5ZG, NUCLEO-L4R5ZI, and NUCLEO-L4R5ZI-P are in compliance with directives 2011/53/EU and 2015/863/EU (RoHS), and 2014/30/EU (EMC).

Note: - RoHS: Restriction of hazardous substances

- EMC: Electromagnetic compatibility

Warning

These devices are compliant with Class B of EN55032/CISPR32. In a residential environment, this equipment may cause radio interference.

Note: Use only shielded cables.

9.4.2 Déclaration de conformité UE simplifiée

STMicroelectronics déclare que les équipements électriques des types NUCLEOL496ZG, NUCLEO-L496ZG-P, NUCLEO-L4A6ZG, NUCLEO-L4P5ZG, NUCLEO-L4R5ZI, et NUCLEO-L4R5ZI-P sont conformes aux directives 2011/53/UE et 2015/863/UE (LdSD), et à la directive 2014/30/UE (CEM).

Note:

- *LdSD : directive sur la limitation de l'utilisation des substances dangereuses*
- *CEM : compatibilité électromagnétique*

Avertissement

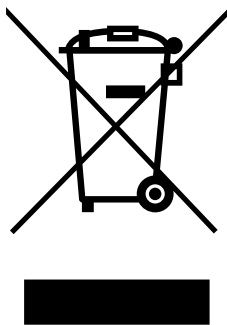
Ces équipements sont conformes à la Classe B de la EN55032 / CISPR 32. Dans un environnement résidentiel, ces équipements peuvent créer des interférences radio.

Note: *Utiliser uniquement des câbles blindés.*

10 Product disposal

Disposal of this product: WEEE (Waste Electrical and Electronic Equipment)

(Applicable in Europe)



This symbol on the product, accessories, or accompanying documents indicates that the product and its electronic accessories must not be disposed of with household waste at the end of their working life.

To prevent possible harm to the environment and human health from uncontrolled waste disposal, separate these items from other types of waste and recycle them responsibly at a designated collection point to promote the sustainable reuse of material resources.

Household users:

Contact the retailer that you purchased the product from or your local authority for details of your nearest designated collection point.

Business users:

Contact your dealer or supplier for further information.

Revision history

Table 15. Document revision history

Date	Revision	Changes
28-Feb-2017	1	Initial version.
27-Mar-2017	2	Document now also scopes NUCLEO-L496ZG-P product. Added: Section 6.5.4: SMPS power supply Figure 12: NUCLEO-L496ZG-P Updated: – cover page features (to cover LL library) – cover page description – Section 1: Features (SMPS function) – Section 6.6: LEDs – Section 6.13: Solder bridges and jumpers – Section Appendix B: Board revision history and limitations – Table 1: Ordering information – Table 2: Codification explanation – Table 11: NUCLEO-L496ZG, NUCLEO-L496ZG-P and NUCLEO-L4R5ZI pin assignments – Figure 3: Hardware block diagram – Figure 4: STM32 Nucleo-144 board top layout – Figure 5: STM32 Nucleo-144 board bottom layout
08-Aug-2017	3	Document now also scopes NUCLEO-L4R5ZI product. Added Figure 13: NUCLEO-L4R5ZI . Updated: – The cover page Introduction – Table 1: Ordering information – Table 2: Codification explanation
31-Aug-2017	4	Updated Table 1: Ordering information .
7-Nov-2017	5	Updated Chapter 2: Product marking . Added Section 6.17: Bootloader limitation .
15-Dec-2017	6	Expanded document scope to the NUCLEO-L4A6ZG product: – Updated Introduction – Updated Table 1: Ordering information and Table 11: NUCLEO-L496ZG, NUCLEO-L496ZG-P, NUCLEO-L4R5ZI and NUCLEO-L4A6ZG pin assignments – Added Figure 13: NUCLEO-L4A6ZG
1-Feb-2018	7	Expanded document scope to the NUCLEO-L4R5ZI-P product: – Updated Introduction – Updated Section 6.5.4: SMPS power supply – Updated Table 1: Ordering information and Table 11: NUCLEO-L496ZG, NUCLEO-L496ZG-P, NUCLEO-L4R5ZI, NUCLEO-L4R5ZI-P and NUCLEO-L4A6ZG pin assignments – Added Figure 15: NUCLEO-L4R5ZI-P

Table 15. Document revision history (continued)

Date	Revision	Changes
17-Sep-2019	8	<p>Added a caution about the power sequence not being respected when using 1V8 MCU_VDD in Section 5.5.4: SMPS power supply.</p> <p>Reorganized the beginning of the document from Introduction to Section 4: Conventions. Updated the document title.</p> <p>Updated Section 1: Features, Table 1: Ordering information, and Table 2: Codification explanation.</p>
26-Nov-2019	9	<p>Expanded document scope to the NUCLEO-L4P5ZG product:</p> <ul style="list-style-type: none"> – Updated Introduction – Updated Table 1: Ordering information and Table 11: ST Zio connectors pin assignments – Added Figure 14: NUCLEO-L4P5ZG – Updated Section 7.17.4: Affected parts <p>Removed Appendix A: Electrical schematics. Updated Section 7.5.2: External power supply inputs, Section 7.11: LPUART1 communication, and Section 7.13: Solder bridges and jumpers.</p>
14-Oct-2025	10	<p>Updated:</p> <ul style="list-style-type: none"> – Cover page – Section 1: Features – Section 3: Development environment – Figure 3: Hardware block diagram – Table 10: Configuration of the solder bridges and jumpers – Section 9: Compliance statements and conformity declarations <p>Added:</p> <ul style="list-style-type: none"> – Section 2.1: Codification – Section 5: Safety recommendations – Section 8: Product information – Section 10: Product disposal <p>Removed all references to Arm® Mbed™.</p>

IMPORTANT NOTICE – READ CAREFULLY

STMicroelectronics NV and its subsidiaries ("ST") reserve the right to make changes, corrections, enhancements, modifications, and improvements to ST products and/or to this document at any time without notice.

In the event of any conflict between the provisions of this document and the provisions of any contractual arrangement in force between the purchasers and ST, the provisions of such contractual arrangement shall prevail.

The purchasers should obtain the latest relevant information on ST products before placing orders. ST products are sold pursuant to ST's terms and conditions of sale in place at the time of order acknowledgment.

The purchasers are solely responsible for the choice, selection, and use of ST products and ST assumes no liability for application assistance or the design of the purchasers' products.

No license, express or implied, to any intellectual property right is granted by ST herein.

Resale of ST products with provisions different from the information set forth herein shall void any warranty granted by ST for such product.

If the purchasers identify an ST product that meets their functional and performance requirements but that is not designated for the purchasers' market segment, the purchasers shall contact ST for more information.

ST and the ST logo are trademarks of ST. For additional information about ST trademarks, refer to www.st.com/trademarks. All other product or service names are the property of their respective owners.

Information in this document supersedes and replaces information previously supplied in any prior versions of this document.

© 2025 STMicroelectronics – All rights reserved