

# Imaging - Optical Sensing Solutions



Global Shutter Imagers  
for Machine Vision



FlightSense™



Spectral Light Sensor  
for Color Sensing



# Global Shutter Imager for Machine Vision

A robotic head mimics visitor head movements and expressions

Optimized in NIR for computer vision and combined with face analysis

Global Shutter technology for perfect image capture, key for computer vision

High sensitivity under Near-IR 940nm illumination

Gives **eyes** to machines



Enables **eye-safe & lower power** illuminated systems



Accurate user **authentication** and **monitoring**



Provides sharp images from **fast-moving objects**



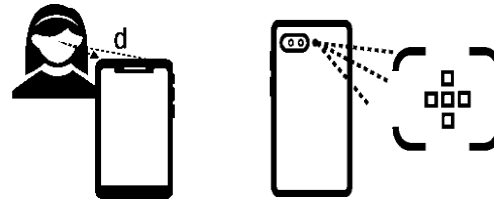
## Advanced ToF human presence detection including user location

VL53L5 allows Human detection, User tracking and Motion detection

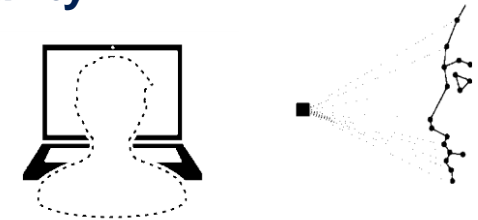
VL53L5 combined with AI algorithms enables new features: Multi-user, Gesture detection, User intent

Low power & Wide Field-of-View  
Fully compatible with Windows and INTEL ISH ecosystem

**True distance measurement**  
independent of the color of the target



**Saves power and enhances security**



**Detects obstacles and objects**



**Maps the environment in 3D**



# Spectral Light Sensor for Color Sensing

Accurately calculates illuminance, chromaticity and color temperature.

5-channels: R, G, B, IR and Clear


Excellent sensitivity in low light conditions

Smallest color sensor on the market


**Light-level** monitoring to allow screen **brightness control**



**Indoor/outdoor** detection for **industrial & home lighting**



**Color Acquisition** and **Color Temperature**



**Light frequency** extraction for camera **flicker correction**

