



life.augmented



# ST Solutions for **Asset Tracking**

Ernesto Manuel CANTONE

# Asset tracking applications and segmentation

## Outdoor Real-Time Monitoring



Containers



Livestock monitoring



e-bike



Fleet management



Pet tracking



## Industrial Logistic



Pallets



Racks



Luggage



Smart parcels



## Good Guarantee



Cold chain



Food



Medical



## Disposable



Letters



Packages



Parcels



# Asset tracking

## Needs per applications

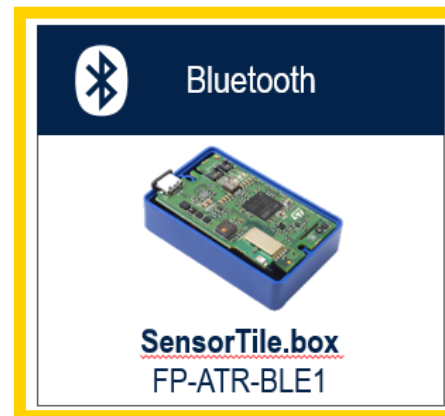
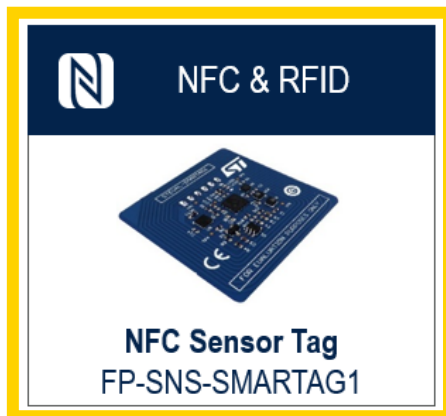
		Processing & Security	Sensing	Connectivity	Power Management	
<b>Outdoor Real-Time Monitoring</b> Containers, livestock monitoring, e-bike, Fleet management, pet, tools management		Dedicated MCU Dedicated Secure chip	HI-G 	 	 	Real-time tracker
<b>Industrial Logistic</b> Pallets, racks, indoor / outdoor location		Dedicated MCU Embedded security	HI-G 	 		Complexity (# of sensors, connectivity)
<b>Good Guarantee</b> Cold chain, food, medical, smart parcels		Dedicated MCU Embedded security	HI-G 	 		
<b>Disposable</b> Letters, packages, parcels		Digital Sensors Embedded security		 LPWAN: LoRaWAN, LTE CATM1 / NBIoT, Sigfox		



# ST offering for asset tracking



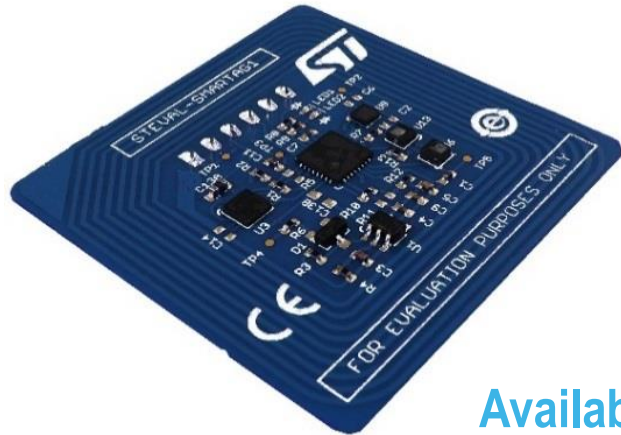
ST offers components and evaluation platforms that are suitable for all asset tracking use cases





# NFC Sensor Tag STEVAL-SMARTAG1

## NFC Dynamic sensor TAG for asset tracking



Available Software  
FP-SNS-SMARTAG1

Mobile App  
ST NFC Sensor



### Motion & Environmental Sensors



Low power accelerometer  
**LIS2DW12**



Altimeter / Pressure sensor  
**LPS22HH**



Humidity and temperature sensor  
**HTS221**

### Processing



STM32L0 low-power MCU  
**STM32L031K6**

### Connectivity



Dynamic NFC Tag  
**ST25DV64K**

RFID

### Power management



Voltage regulator  
**STLQ015**



# SensorTile.box STEVAL-MKSBOX1V1

## A ready-to-go IoT Node



### Available Software

FP-SNS-STBOX1

FP-AI-SENSING1

FP-ATR-BLE1

### Mobile App

ST BLE Sensor

ST Asset Tracking



### Motion Sensors



Low-power 6-axis IMU, with  
Machine Learning Core

**LSM6DSOX**



High-performance and low  
power accelerometers

**LIS3DHH & LIS2DW12**



Magnetometer

**LIS2MDL**

IP54-compliant casing  
500 mA-h Li-Po battery

### Environmental Sensors



Altimeter / Pressure sensor

**LPS22HH**



Accurate temperature  
sensor

**STTS751**



Humidity sensor

**HTS221**



Analog wide-band  
microphone

**MP23ABS1**

### Processing



STM32L4 low-power MCU

**STM32L4R9ZIJ6**

### Connectivity



Bluetooth Low Energy  
Module

### Power management



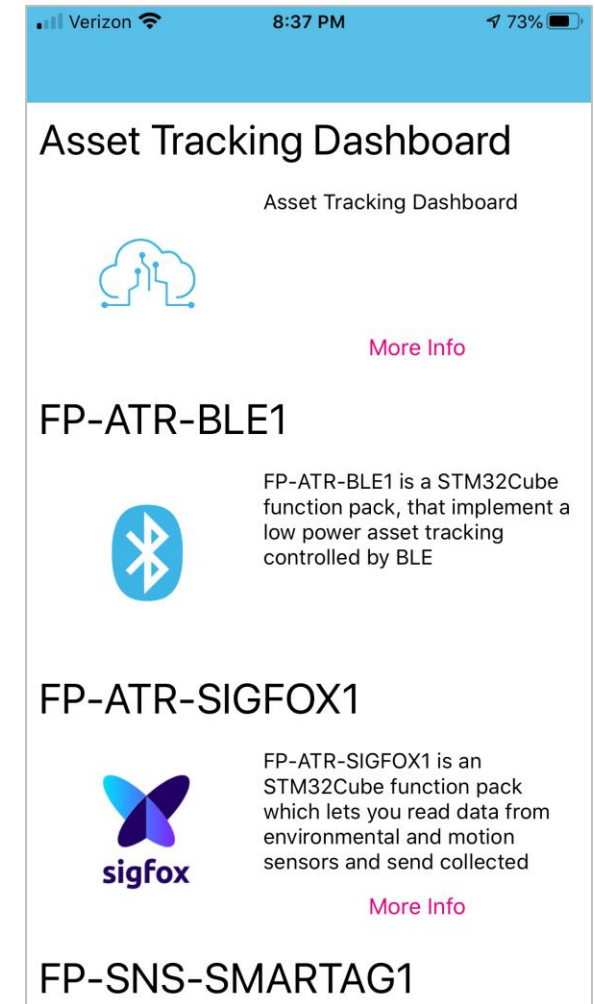
Battery charger



**STBC02**

[www.st.com/sensortilebox](http://www.st.com/sensortilebox)

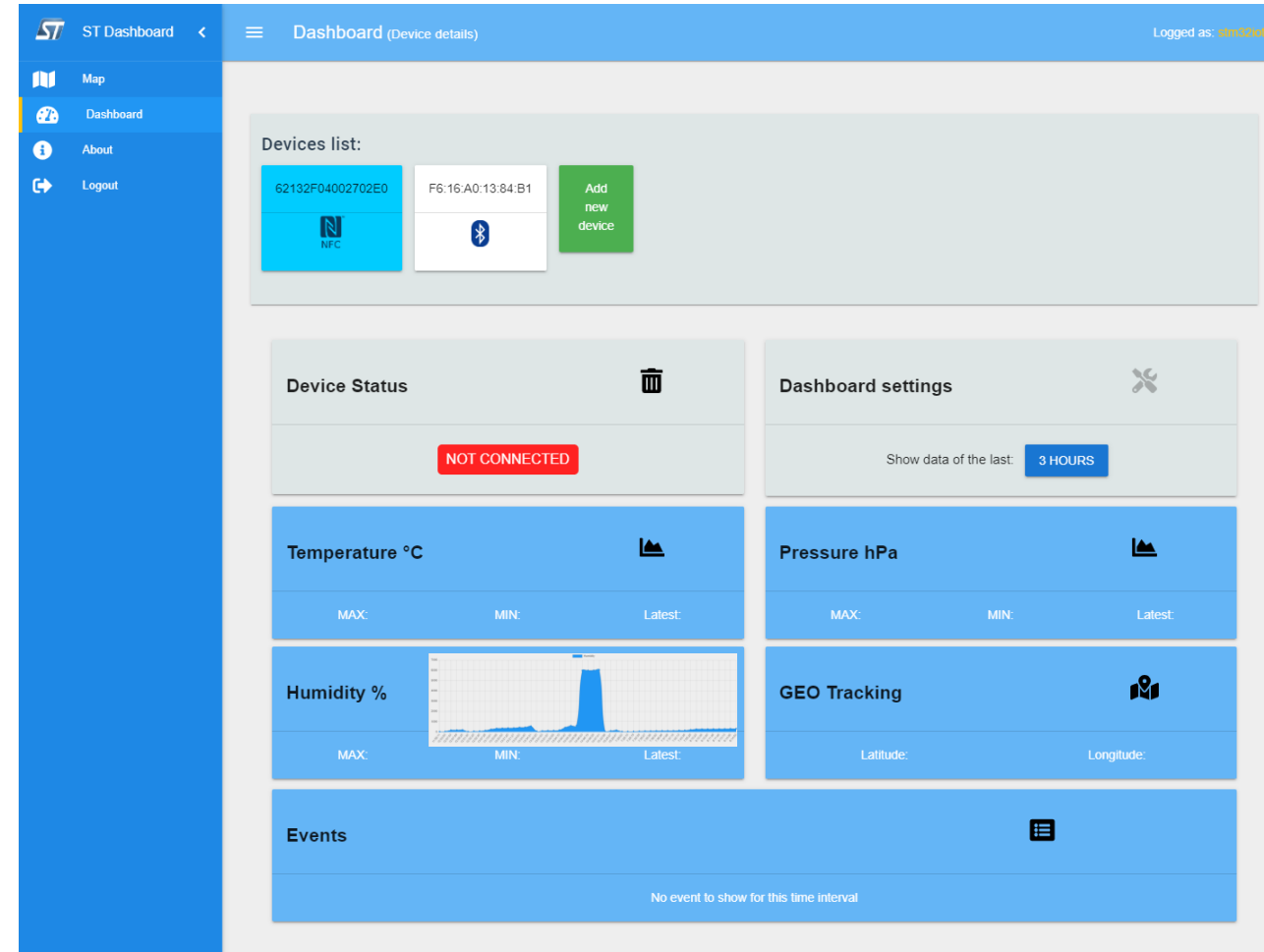
# FP-ATR-BLE1

- STM32Cube function pack for asset tracking using BLE connectivity for the SensorTile.box wireless multi sensor development kit
- Complete example on how to create an **asset tracking application** a using Bluetooth Low Energy (BLE) Sensor Node
- Mobile device running **ST Asset Tracking** client application for Android/iOS
- Collect and display sensors data:
  - Wake-up, tilt and orientation detection by the on-board accelerometer
  - Environmental sensor data and inertial data saved on SD card



- **SensorTile.box** running **FP-ATR-BLE1**
-  **ST Asset Tracking App**
-  **ST NFC Sensor App**
- **DSH-ASSETTRACKING** cloud application providing intuitive interface tailored for the collection, visualization and analysis of asset tracking position as well as data from motion and environmental from compatible ST devices such as NFC Sensor Tag and Sensortile.box.

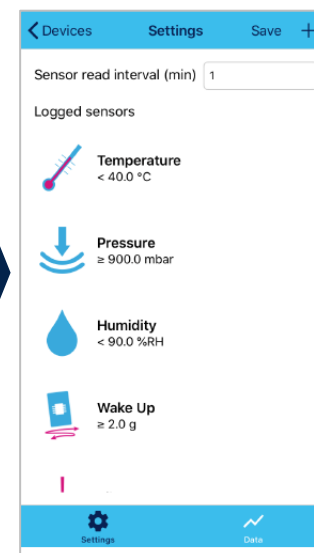
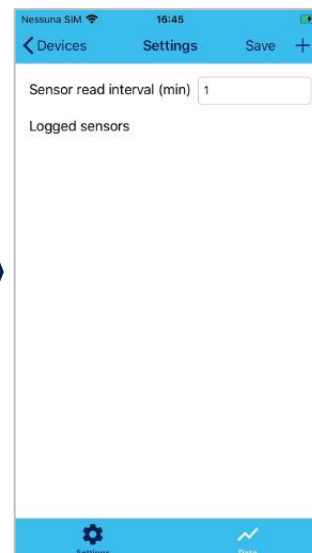
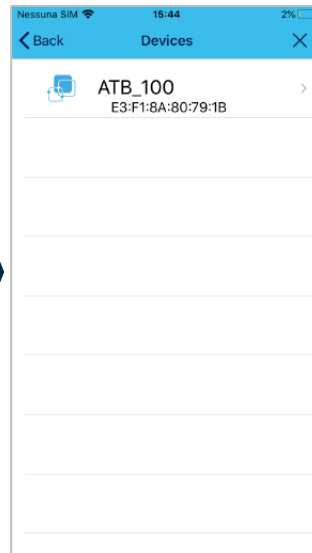
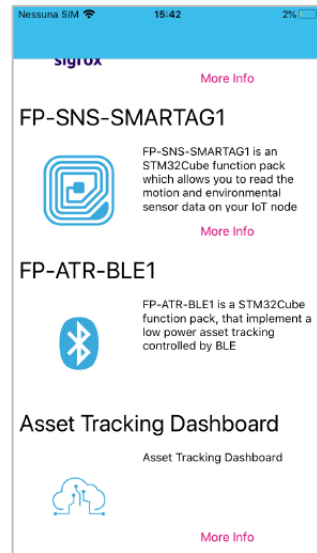
# DSH-ASSETTRACKING



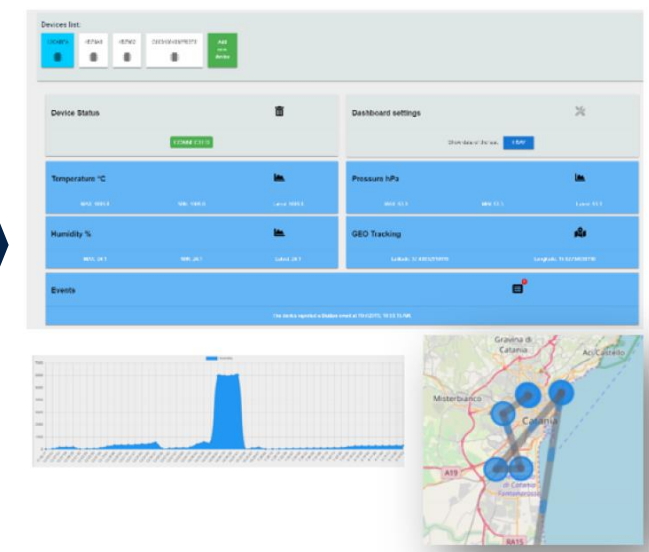
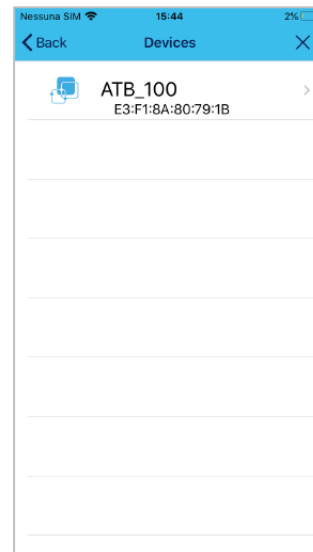
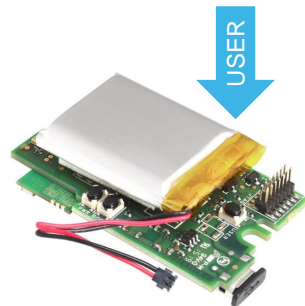


# Asset Tracking with SensorTile.box

Prepare  
SensorTile.box  
for Shipping



Receiving goods  
equipped with  
SensorTile.box



# Questions?

