



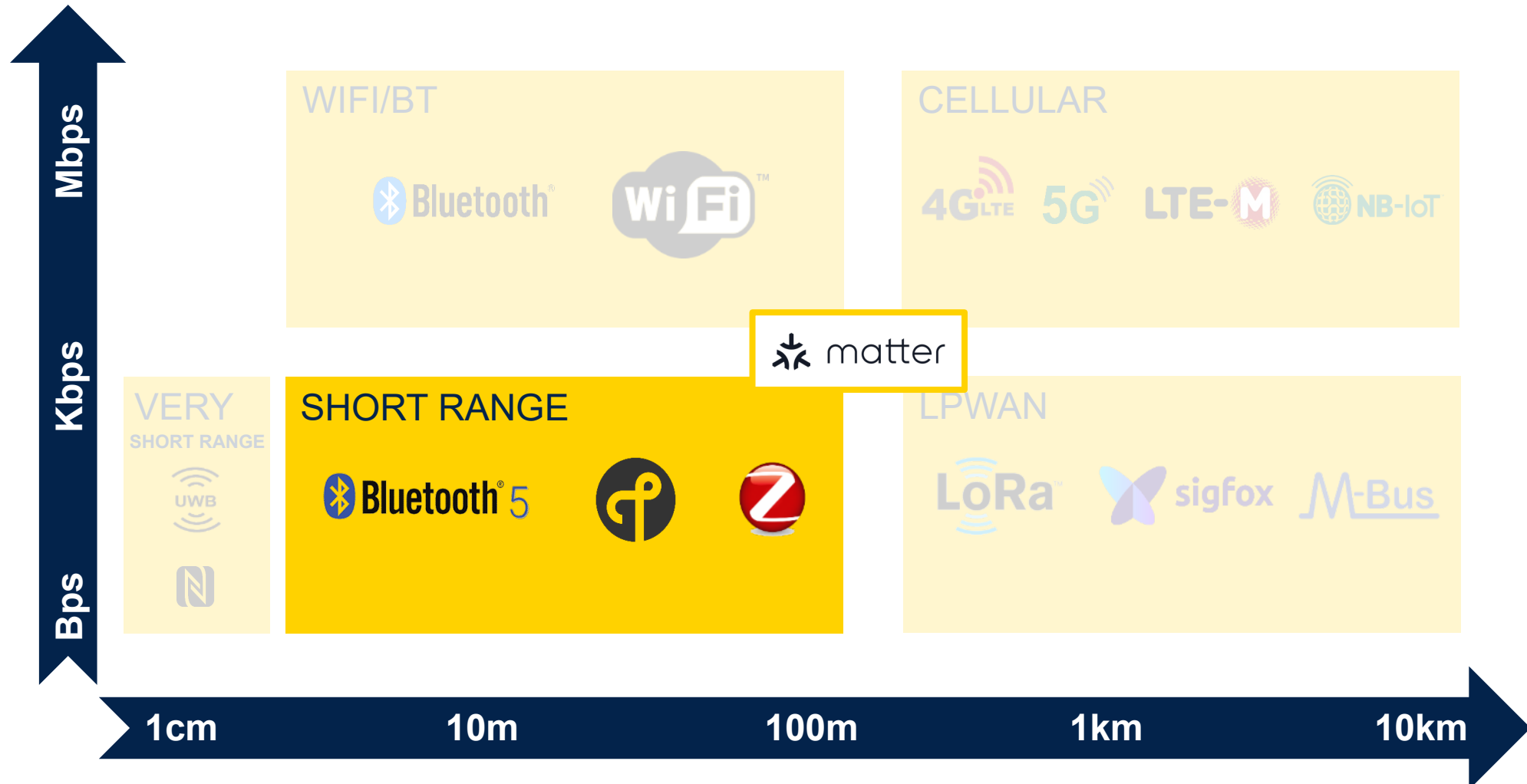
life.augmented

Matter, Bluetooth® LE, Zigbee & Thread

**How ST's connectivity
solutions support these
evolving standards**

Communication Technologies – overview

Matter, Bluetooth® LE, Zigbee & Thread



Wireless connectivity expansion

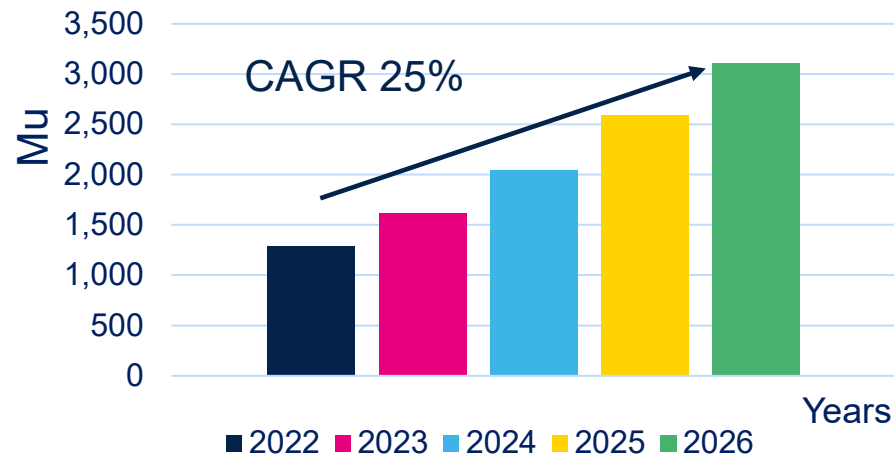
IoT is everywhere

Bluetooth LE Growth drivers

Accessories
Speakers
Hearables

Residential
Smart home appliance

Bluetooth LE market trend

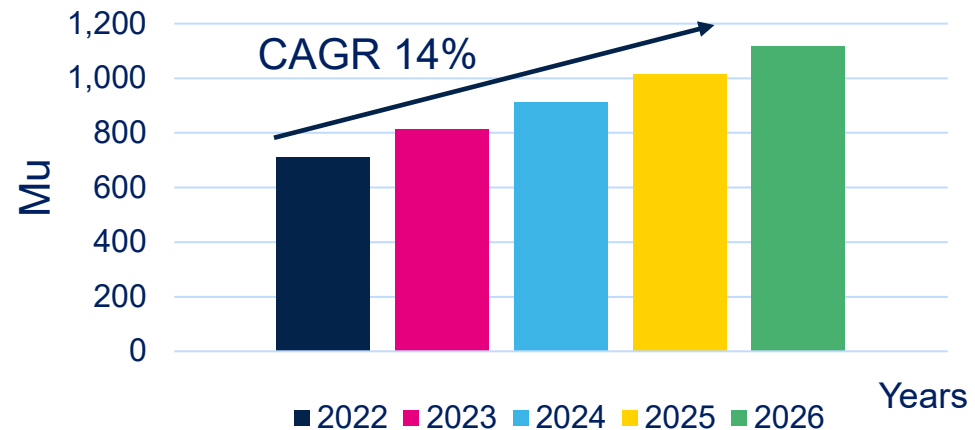


802.15.4 Growth drivers

Smart Home
Smart Appliance

Commercial building automation
Video surveillance

802.15.4 Market trend



Matter, Bluetooth® LE, Zigbee & Thread

More features for more applications



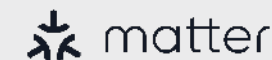
From Bluetooth classic to Bluetooth Low Energy v5.3



From early light link to Zigbee PRO & Zigbee 3.0



From early Thread network to baseline for Matter





From Bluetooth classic to Bluetooth® Low Energy v5.3

Bluetooth Classic



- Audio quality
- Data rate
- Interoperability

Bluetooth LE 4.x



- Power consumption
- Multi-connection

Bluetooth LE 5.0 to 5.3



- **Mesh** topology
- Data rate increase **2Mbps**
- Operating volume **Coded PHY**
- Direction Finding: **Aox**
- Audio introduction **isochronous channel**

What's next



- Speed
- Audio increment
- Localization / Distance



1999



2010



2016



2021





From early light link to Zigbee PRO & Zigbee 3.0

Zigbee early solution



- Light link
- Home automation
- Smart metering

Zigbee Pro



- Cluster libraries
- Multi-casting
- Many-to-one routing
- Enhanced security

Zigbee 3.0



- Unified profiles
- Cluster IP (ZCL)
- Robustness
- Interoperability improved
- Green power proxy
- Long Range

What's next



- ZUTH
- Zigbee Direct
- Security enhancement



2005-2006



2007



2016



2021



From early Thread network to a baseline for Matter

Thread DNA



- IEEE 802.15.4 radio
- Mesh network
- Low power
- IP networks
- Self managed, self healing

Thread 1.1



- Low power
- Multi-roles topology
 - End device
 - Mesh extender
 - Leader
 - Border Router

Thread 1.2 & 1.3



- Low power enhancement
- BLE over Thread
- Border Router extension
- IP routing
- Service discovery
- Matter support

What's next



- Long range
- OT 1.3 optimizations



2016



2022

Matter makes smart home connectivity simple



“Smart home devices should be secure, reliable, and seamless to use. And with Matter, they are.”

The Connectivity Standards Alliance

- **A great user experience**
Matter ensures connected objects from multiple brands can work together seamlessly
- **Wide adoption**
Matter is an application layer which addresses many applications in an open-source delivery and certification infrastructure



What is Matter? How will it help?

Matter DNA



- Simplify smart home connectivity
- Protect personal data
- Remove borders between devices (technologies, interoperability)
- Open Source

Matter Technology



- IoT needs cloud connection
- Cloud means IPV6
- Wi-Fi and Thread are IPV6
- Matter unified application layer

Matter security & profiles



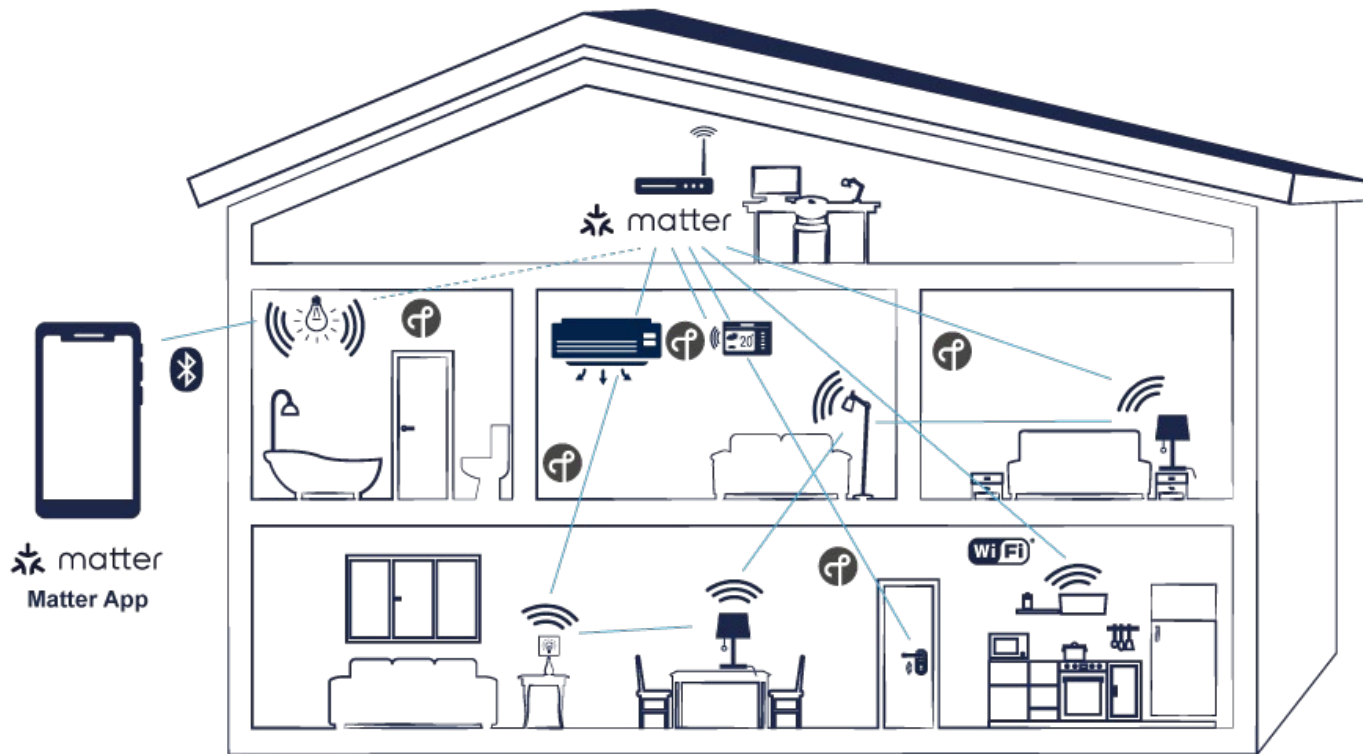
- Each Matter device has unique identifier
- Profiles based on Zigbee clusters
- V1.0 covers already wide panel of applications - lighting, HVAC control, access control, window covering, TVs...

Matter availability



- Release V1.0 Q4'2022
SDK
Certified laboratories
- Next: more applications

Smart home & building markets



Wi-Fi & Thread for transport

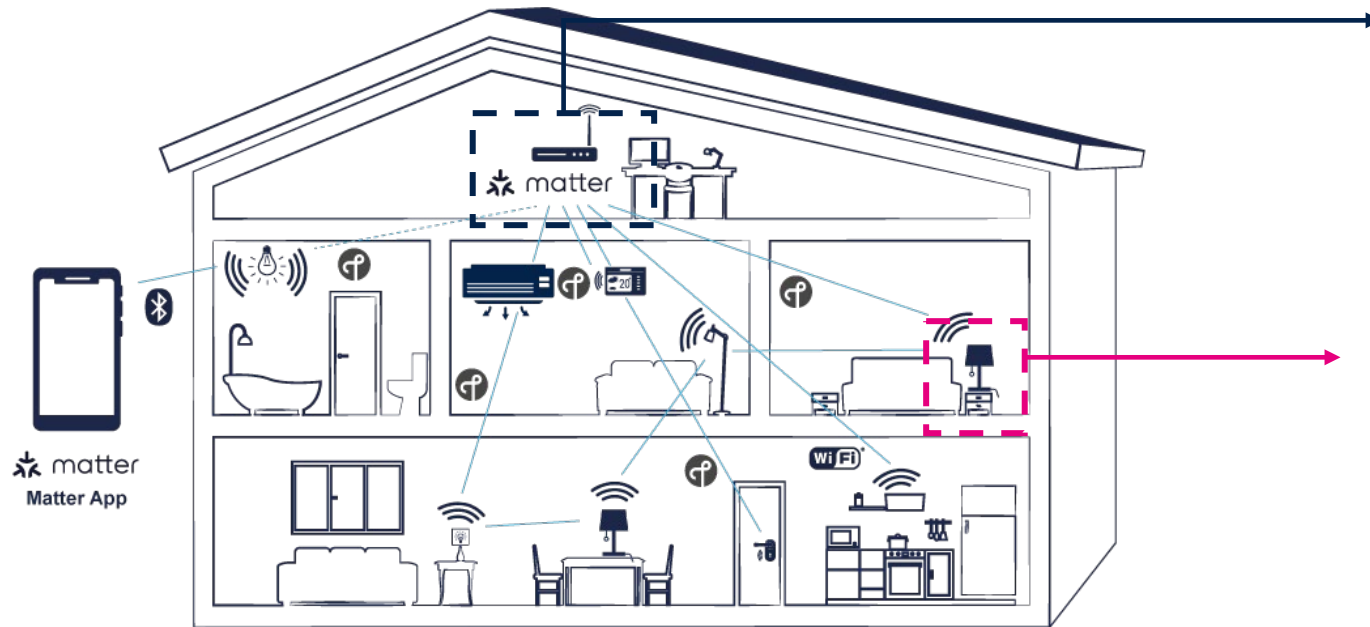
Bluetooth LE for commissioning

Secure at each stage

- Authentication & attestation for commissioning
- Protection of any message
- Certified Matter device only



STM32 portfolio supporting Matter



STM32WB, STM32H7, STM32U5, STM32MP1 MPU provide a supporting infrastructure to run Matter in bridge devices

STM32WB MCUs enables Matter networks in end devices thanks to:

- multi-protocol capabilities
- 1Mbyte of Flash and 256-Kbyte of RAM
- Quad-SPI peripheral to extend the memory size externally with execution in place
- Over-The-Air firmware updates whatever the application and the connectivity stack

How ST enables these wireless technologies

STM32, ultra low power, connectivity



STM32 MCUs



STM32WB product series



STM32 ecosystem





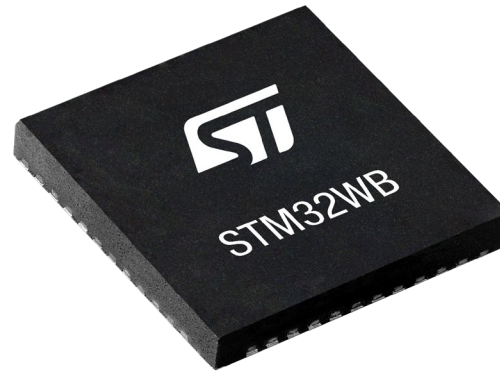
STM32WB – Application processor for connectivity

Dual core architecture



Arm® Cortex® M4
Arm® Cortex® M0+

Up to
1MB flash / 256KB RAM



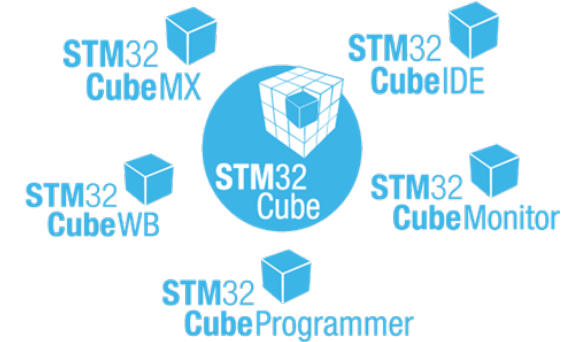
Multi-protocols



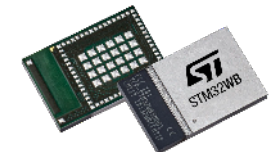
<https://wiki.st.com/stm32mcu/wiki/Category:Connectivity>



One-Stop-Shop



Whatever the end device



Addressing the full 2.4GHz market

BlueNRG series

STM32WB series



Wearable, healthcare,
smart appliances

- 2Mbps
- Long range
- Adv extension
- AOA/AOD

Bluetooth Mesh



Home appliances,
industrial

- Mesh topology
- Large scale
- BT SIG standard



End device
border router

- End device
- Border router
- Matter V1.0 candidate



Sensors, home
appliances, industrial

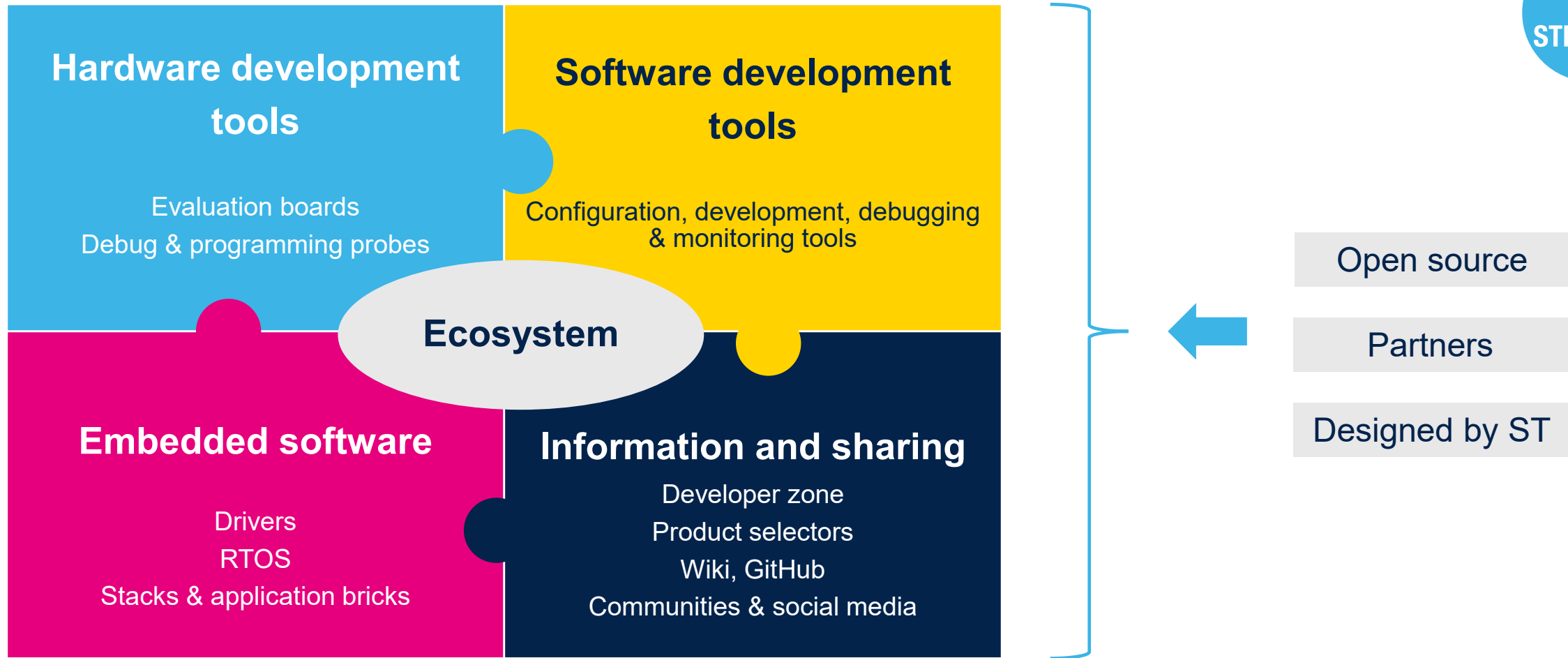
- OT1.1 certified
- OT1.3 candidate



Sensors, home
automation, industrial

- Mesh topology
- Large scale
- Zigbee compliant

STM32 ecosystem for developers



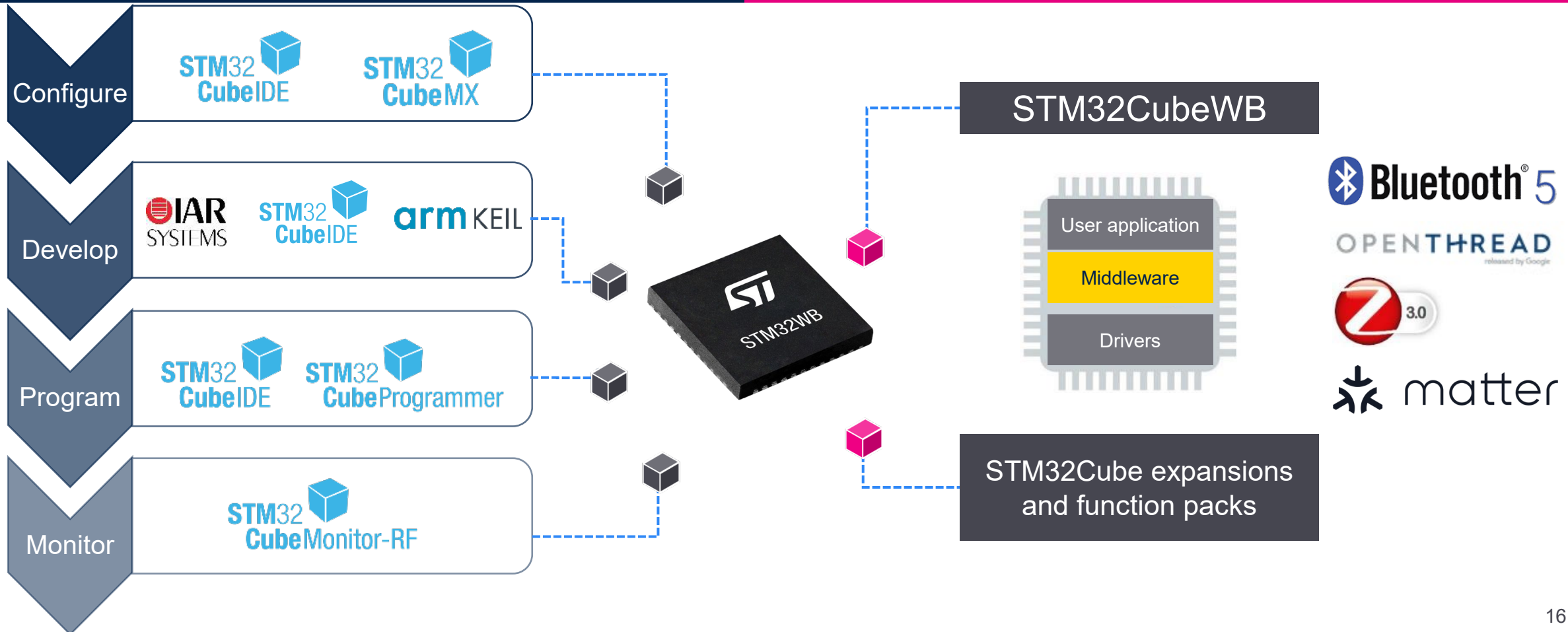


STM32Cube software suite

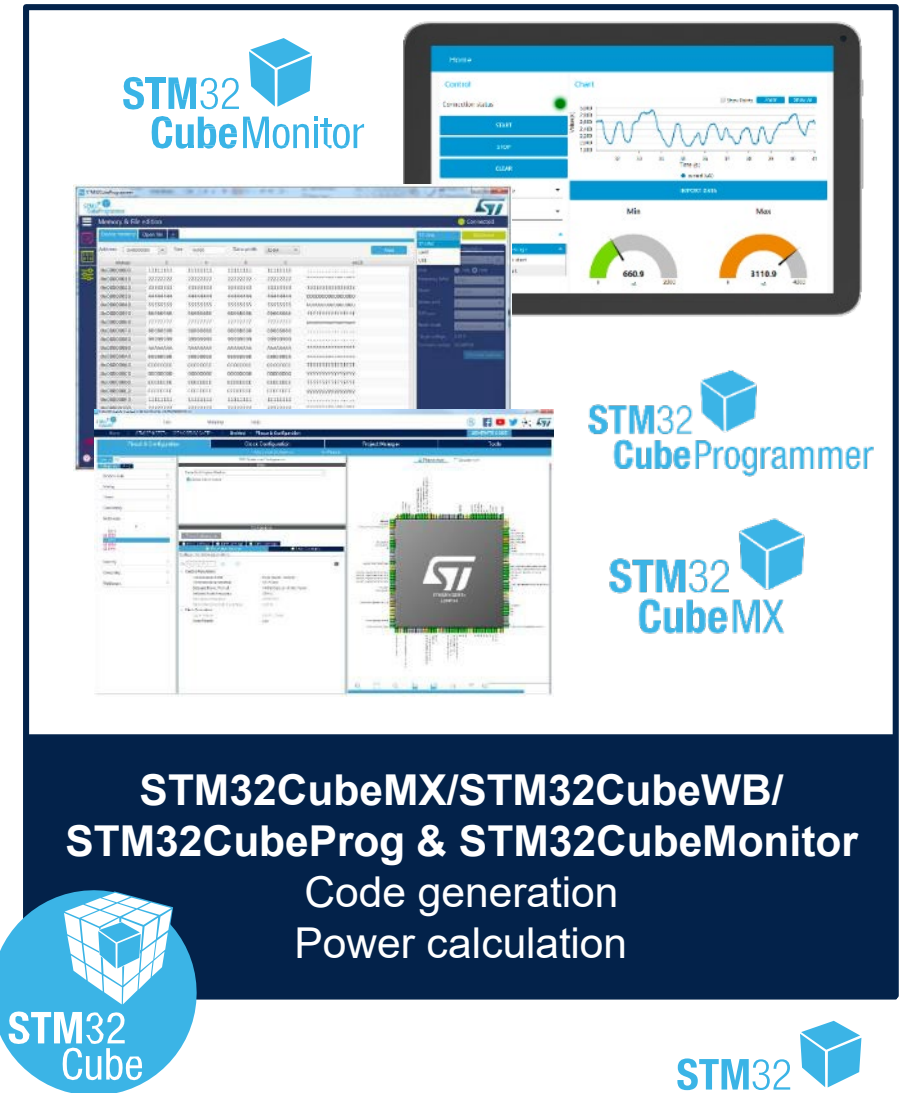
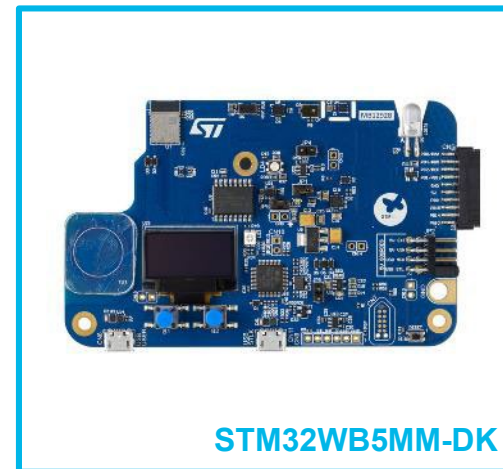
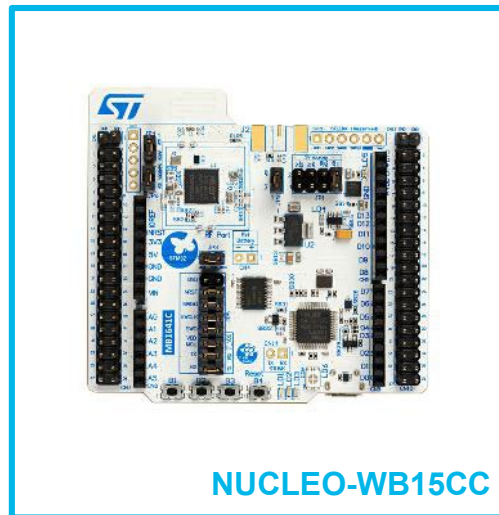


Software tools

Embedded software



Prototyping made as easy as 1,2,3



STM32CubeMonitor

STM32CubeProgrammer

STM32CubeMX

STM32Cube

STM32CubeMX/STM32CubeWB/
STM32CubeProg & STM32CubeMonitor

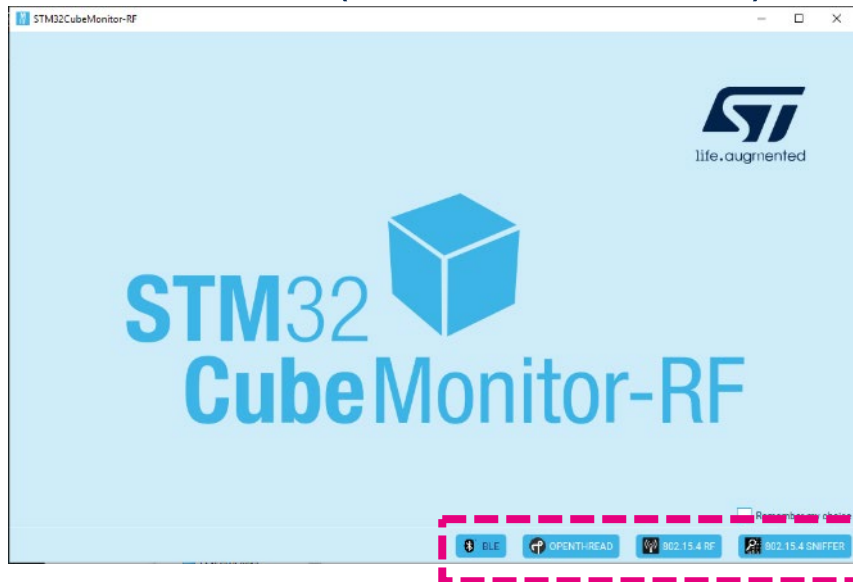
Code generation
Power calculation

STM32CubeMonitor-RF

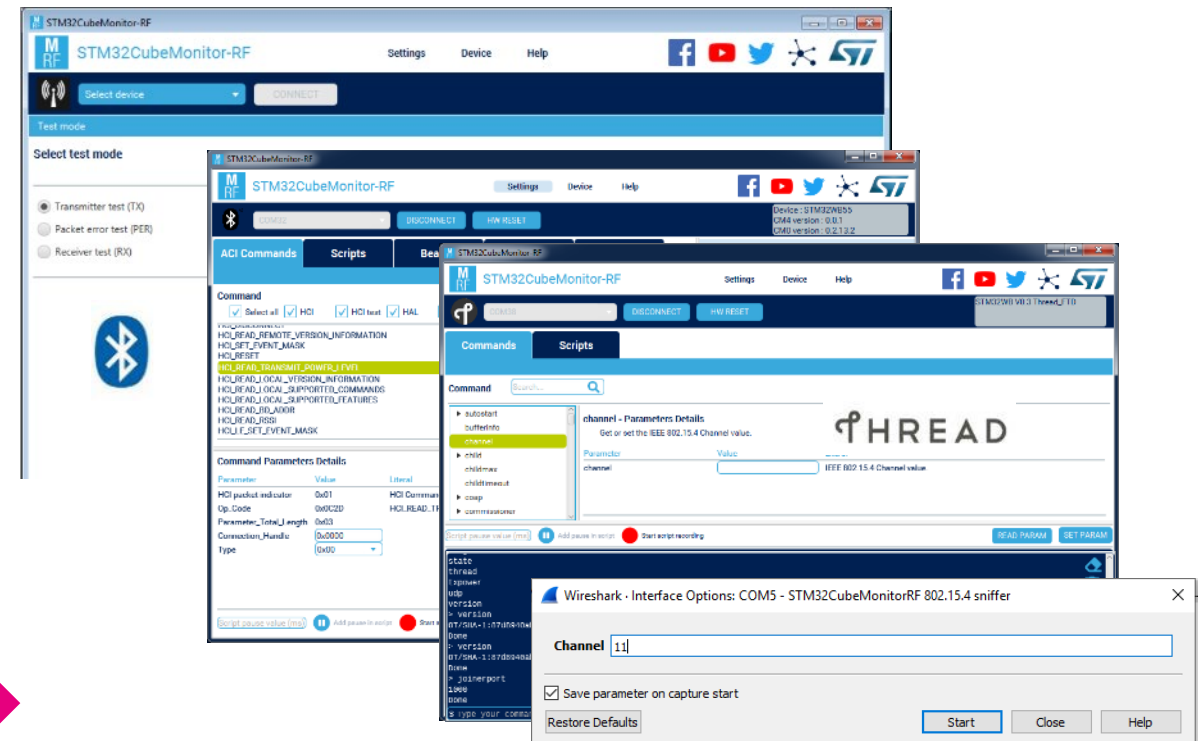
Exercise wireless features of STM32WB

- Bluetooth Low Energy (BLE) commands
- Bluetooth LE RF tests
- send OpenThread commands
- perform 802.15.4 RF tests
- 802.15.4 sniffer (Wireshark based)

- DUT - Nucleo, USB dongle or customer boards
- USB or UART to Virtual Com Port



Mode selection



ST BLE Smart Phone apps



ST BLE Sensor



ST BLE StarNet



ST BLE Mesh

ST BLE Sensor – Used with our OOB demo

It shows the data exported by a BLE device using the BlueST protocol

ST BLE StarNet (Star topology)

It allows viewing the data exported by a BLE gateway connected to a network of devices

ST BLE Mesh

It allows to create your own Bluetooth® Mesh Profile compliant mobile Apps

ST BLE ToolBox

It allows to discover peripherals, services and characteristics, performs R&W, Collect Cloud based Analytics on Azure App Center, Bond devices, Throughput Test, Log messages

new



ST BLE Toolbox

Our technology starts with You



Find out more at www.st.com/connectivity

© STMicroelectronics - All rights reserved.

ST logo is a trademark or a registered trademark of STMicroelectronics International NV or its affiliates in the EU and/or other countries.

For additional information about ST trademarks, please refer to www.st.com/trademarks.

All other product or service names are the property of their respective owners.



life.augmented