

PCB thermal guidelines for the VL53L5CX Time-of-Flight ranging sensor with multi-object detection

Introduction

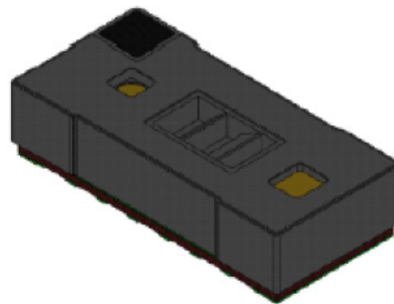
When used in Continuous mode, the VL53L5CX module typically consumes 216 mW of power, and consequently requires careful thermal management to ensure optimum device performance and to avoid overheating.

Table 1. Main thermal parameters

Parameter	Symbol	Min	Typ	Max	Unit
Power consumption	P	—	216 ⁽¹⁾	430 ⁽²⁾	mW
Module thermal resistance	θ_{mod}	—	40	—	°C/W
Junction temperature ⁽³⁾	T_{J}	—	—	100	°C
Operating temperature range	T	-30	25	70	°C

1. $AVDD = 2.8\text{ V}$; $IOVDD = 1.8\text{ V}$ typical current consumption.
2. $AVDD = 3.3\text{ V}$; $IOVDD = 3.3\text{ V}$ maximum current consumption.
3. To prevent thermal shutdown, the junction temperature must be kept below 110 °C.

Figure 1. VL53L5CX ranging sensor module



1 Thermal design basics

The symbol θ is generally used to denote thermal resistance which is a measure of a temperature difference by which an object or material resists a heat flow. For example, when transferring from a hot object (such as silicon junction) to a cool one (such as module backside temperature or ambient air).

The formula for thermal resistance is shown below and is measured in °C/W:

$$\theta = \frac{\Delta T}{P}$$

Where ΔT is the rise in junction temperature and P is the power dissipation.

So, for example, a device with a thermal resistance of 100 °C/W exhibits a temperature differential of 100 °C for a power dissipation of 1 W as measured between two reference points.

If a module is soldered to a PCB or flex then the total system thermal resistance is the sum of the module thermal resistance and the thermal resistance of the PCB or flex to the ambient/air. The formula is as follows:

$$\Delta T = (T_J - T_A) = P \times (\theta_{\text{mod}} + \theta_{\text{pcb}})$$

Where:

- T_J is the junction temperature
- T_A is the ambient temperature
- θ_{mod} is the module thermal resistance
- θ_{pcb} is the thermal resistance of the PCB or flex

2 Thermal resistance of PCB or flex

The maximum permitted junction temperature of the VL53L5CX is 100 °C. So, for a power dissipation of 0.43 W operating at the maximum specified ambient temperature of 70 °C (worst case scenario), the maximum permitted PCB or flex thermal resistance is calculated as follows:

- $T_J - T_A = P \times (\theta_{\text{mod}} + \theta_{\text{pcb}})$
- $100 - 70 = 0.43 \times (40 + \theta_{\text{pcb}})$
- $\theta_{\text{pcb}} = \frac{100 - 70}{0.43} - 40$
- $\theta_{\text{pcb}} \approx 30 \text{ }^\circ\text{C/W}$

This gives a combined system thermal resistance of 70 °C/W ($\theta_{\text{mod}} + \theta_{\text{pcb}}$).

Note: To ensure the maximum junction temperature is not exceeded and to ensure optimum module performance, it is recommended not to exceed the above target thermal resistance.

For a typical system dissipating 216 mW, the maximum temperature rise is < 20 °C which is recommended for optimum performance of the VL53L5CX.

3 Layout and thermal guidelines

Use the following guidelines when designing the module PCB or flex:

- Maximize the copper cover on the PCB to increase the thermal conductivity of the board.
- Use the module thermal pad B4 shown in [Figure 2. VL53L5CX pin out and thermal pad](#) (see the VL53L5CX datasheet for more details) adding as many thermal vias as possible to maximize thermal conductivity into adjacent power planes (refer to [Figure 3. Thermal pad and via on the PCB recommendation](#)).
- Use wide tracking for all signals particularly power and ground signals; track and connect into adjacent power planes where possible.
- Add heat sinking to the chassis or frames to distribute heat away from the device.
- Do not place adjacent to other hot components.
- Place the device in a low power state when not in use.

Figure 2. VL53L5CX pin out and thermal pad

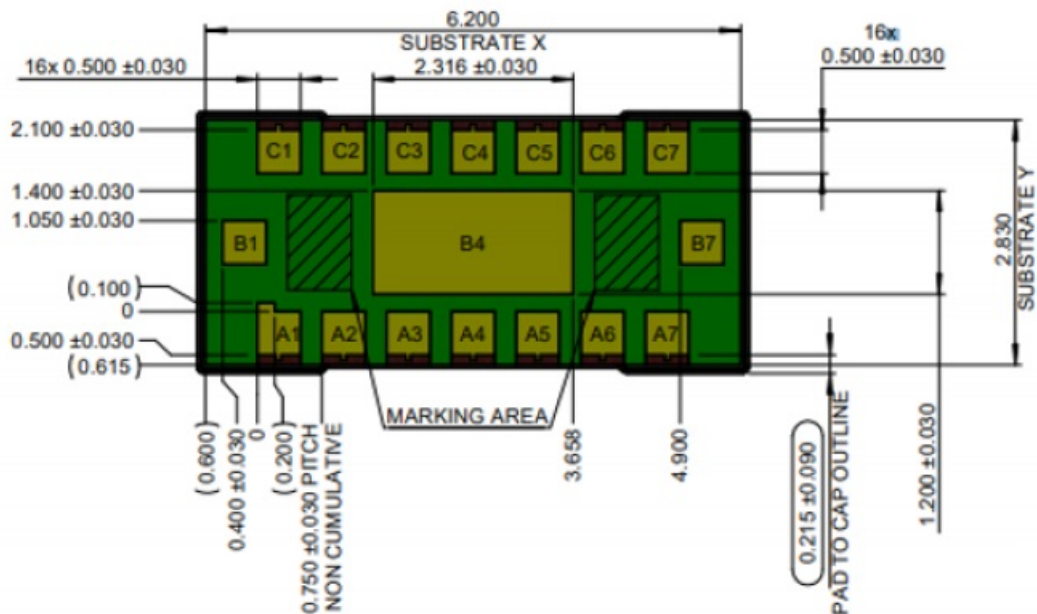
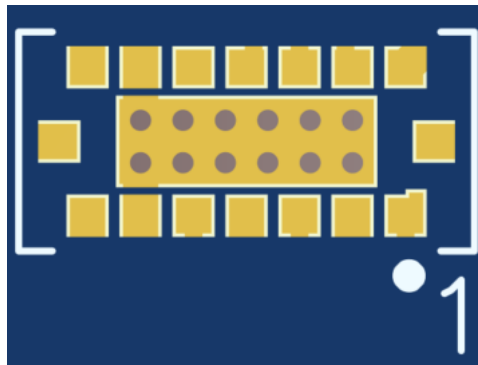


Figure 3. Thermal pad and via on the PCB recommendation



Revision history

Table 2. Document revision history

Date	Version	Changes
12-Apr-2021	1	Initial release
26-Jul-2021	2	Added "PCB" to document title Introduction: updated typical and maximum power consumption values. Section 2 Thermal resistance of PCB or flex: updated power dissipation (from 0.45 W to 0.43 W), modified value of combined system thermal resistance, and updated typical system dissipation (from 280 mW to 216 mW).

IMPORTANT NOTICE – PLEASE READ CAREFULLY

STMicroelectronics NV and its subsidiaries (“ST”) reserve the right to make changes, corrections, enhancements, modifications, and improvements to ST products and/or to this document at any time without notice. Purchasers should obtain the latest relevant information on ST products before placing orders. ST products are sold pursuant to ST’s terms and conditions of sale in place at the time of order acknowledgement.

Purchasers are solely responsible for the choice, selection, and use of ST products and ST assumes no liability for application assistance or the design of Purchasers’ products.

No license, express or implied, to any intellectual property right is granted by ST herein.

Resale of ST products with provisions different from the information set forth herein shall void any warranty granted by ST for such product.

ST and the ST logo are trademarks of ST. For additional information about ST trademarks, please refer to www.st.com/trademarks. All other product or service names are the property of their respective owners.

Information in this document supersedes and replaces information previously supplied in any prior versions of this document.

© 2021 STMicroelectronics – All rights reserved