

## How to build a LoRa® application with STM32CubeWL

### Introduction

This application note guides the user through all the steps required to build specific LoRa® applications based on STM32WL5x/Ex Series microcontrollers.

LoRa® is a type of wireless telecommunication network designed to allow long-range communications at a very-low bitrate and to enable long-life battery-operated sensors. LoRaWAN® defines the communication and security protocol that ensures the interoperability with the LoRa® network.

The firmware in the STM32CubeWL MCU Package is compliant with the LoRa Alliance® specification protocol named LoRaWAN® and has the following main features:

- Application integration ready
- Easy add-on of the low-power LoRa® solution
- Extremely low CPU load
- No latency requirements
- Small STM32 memory footprint
- Low-power timing services

The firmware of the STM32CubeWL MCU Package is based on the STM32Cube HAL drivers.

This document provides customer application examples on the NUCLEO-WL55JC development board with STM32WL55JC (order codes NUCLEO-WL55JC1 for high-frequency band and NUCLEO-WL55JC2 for low-frequency band) and B-WL5M-SUB1 connectivity expansion board with STM32WL5M.

To fully benefit from the information in this application note and to create an application, the user must be familiar with the STM32 Series microcontrollers, the LoRa® technology, and understand system services such as low-power management and task sequencing.



## 1 General information

The STM32CubeWL runs on STM32WL5x/Ex Series microcontrollers based on the Arm® Cortex®-M processor.

*Note:* Arm is a registered trademark of Arm Limited (or its subsidiaries) in the US and/or elsewhere.



**Table 1. Acronyms and terms**

Acronym	Definition
ABP	Activation by personalization
ADR	Adaptive data rate
BSP	Board support package
DC/DC	Direct current to direct current converter
FHSS	Frequency hopping spread spectrum
FSK	Frequency shift keying
HAL	Hardware abstraction layer
IoT	Internet of things
IPCC	Inter-processor communication controller
IRQ	Interrupt request
LBT	Listen before talk
LoRa	Long range radio technology
LoRaWAN	LoRa wide-area network
LPWAN	Low-power wide-area network
LR-FHSS	Long range frequency hopping spread spectrum
MAC	Media access control
MCPS	MAC common part sublayer
MIB	MAC information base
MLME	MAC sublayer management entity
MSC	Message sequence chart
OTAA	Over-the-air activation
PA	Power amplifier
PER	Packet error rate
PRBS	Pseudo-random bit sequence
RSSI	Receive signal strength indicator
Rx	Reception
SWD	Serial-wire debug
<target>	STM32WL Nucleo boards (NUCLEO-WL55JC)
Tx	Transmission

## Reference documents

- [1] LoRaWAN® 1.0.3 Link Layer Specification - 2018, January
- [2] LoRaWAN® 1.0.3 Regional Parameters Specification - 2018, July
- [3] TS001-1.0.4 LoRaWAN® Link Layer 1.0.4 Specification - 2020, October
- [4] RP002-1.0.1 LoRaWAN® Regional Parameters Specification - 2020, February
- [5] Application note *LoRaWAN® AT commands for STM32CubeWL* (AN5481)
- [6] User manual *Description of STM32WL HAL and low-layer drivers* (UM2642)
- [7] IEEE Std 802.15.4TM - 2011. Low-Rate Wireless Personal Area Networks (LR-WPANs)
- [8] Application note *Long packet with STM32CubeWL* (AN5687)
- [9] Application note *Integration guide of SBSFU on STM32CubeWL (including KMS)* (AN5544)
- [10] Application note *How to secure LoRaWAN® and Sigfox™ with STM32CubeWL* (AN5682)

## LoRa standard

Refer to documents [1], [2], [3], and [4] for more details on LoRa and LoRaWAN recommendations.

## STM32Cube\_FW\_WL firmware packages

The table below lists the applications using the NUCLEO-WL55JC1, NUCLEO-WL55JC2, and/or B-WL5M-SUB1 boards.

**Table 2. LoRaWAN and SubGHz\_Phy projects list**

Project module = Application

Module name	Project module	NUCLEO-WL55JC1 <sup>(1)</sup>	NUCLEO-WL55JC2 <sup>(2)</sup>	B-WL5M-SUB1
LoRaWAN	LoRaWAN_AT_Slave	Yes		
	LoRaWAN_End_Node	Yes		
SubGhz_Phy	SubGhz_Phy_AT_Slave	Yes		
	SubGhz_Phy_PingPong	Yes		
	SubGhz_Phy_LrFhss	Yes		No
	SubGhz_Phy_Per	Yes		

1. High-frequency band

2. Low-frequency band

## 2 STM32CubeWL overview

The firmware of the STM32CubeWL MCU Package includes the following resources (see [Figure 1](#)):

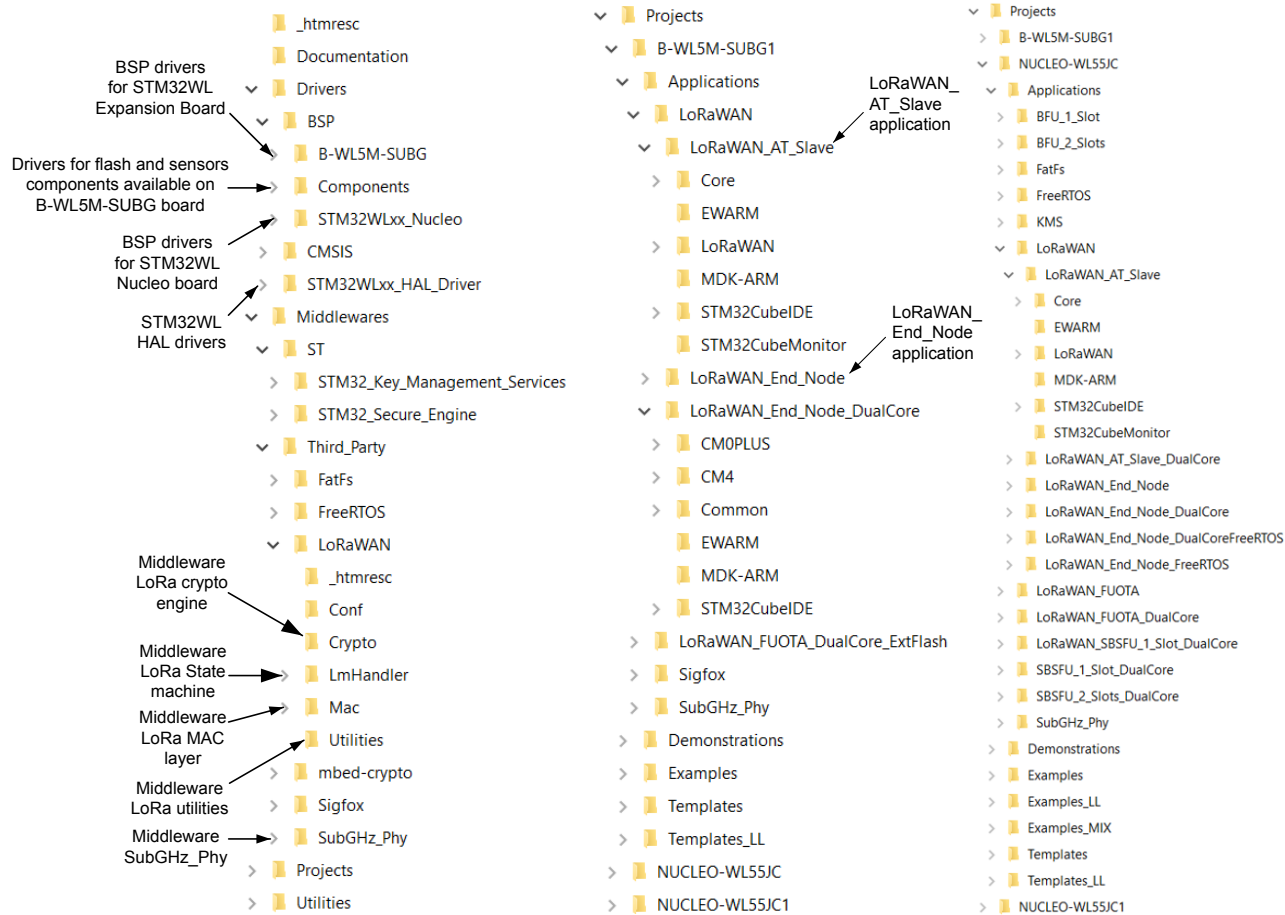
- Board support package:
  - STM32WL\_Nucleo drivers
  - B-WL5M-SUBG1 drivers
- STM32WLxx\_HAL\_Driver
- Middleware:
  - LoRaWAN containing:
    - LoRaWAN layer
    - LoRa utilities
    - LoRa software crypto engine
    - LoRa state machine
  - SubGHz\_Phy layer middleware containing the radio and radio\_driver interfaces
- LoRaWAN applications:
  - LoRaWAN\_AT\_Slave (SingleCore and DualCore)
  - LoRaWAN\_End\_Node (SingleCore, DualCore, SingleCore with FreeRTOS and DualCore with FreeRTOS)
- SubGHz\_Phy application:
  - SubGHz\_Phy\_PingPong (SingleCore and DualCore)
  - SubGHz\_Phy\_Per (SingleCore)
  - SubGHz\_Phy\_AT\_Slave (SingleCore)
  - SubGHz\_Phy\_LrFhss (SingleCore)

In addition, this application provides an efficient system integration with the following:

- a sequencer to execute the tasks in background and to enter low-power mode when there is no activity
- a timer server to provide virtual timers running on RTC (in Stop and Standby modes) to the application

For more details, see [Section 9](#).

Figure 1. Project file structure



DT64327V1

## 3 SubGHz HAL driver

This section focuses on the SubGHz HAL (other HAL functions such as timers or GPIO are not detailed).

The SubGHz HAL is directly on top of the sub-GHz radio peripheral (see [Figure 3](#)).

The SubGHz HAL driver is based on a simple one-shot command-oriented architecture (no complete processes). Therefore, no LL driver is defined.

This SubGHz HAL driver is composed the following main parts:

- Handle, initialization and configuration data structures
- Initialization APIs
- Configuration and control APIs
- MSP and event callbacks
- Bus I/O operation based on the SUBGHZ\_SPI (Intrinsic services)

As the HAL APIs are mainly based on the bus services to send commands in one-shot operations, no functional state machine is used except the RESET/READY HAL states.

### 3.1 SubGHz resources

The following HAL SubGHz APIs are called at the initialization of the radio:

- Declare a SUBGHZ\_HandleTypeDef handle structure.
- Initialize the sub-GHz radio peripheral by calling the `HAL_SUBGHZ_Init(&hUserSubghz)` API.
- Initialize the SubGHz low-level resources by implementing the `HAL_SUBGHZ_MspInit()` API:
  - PWR configuration: Enable wakeup signal of the sub-GHz radio peripheral.
  - NVIC configuration:
    - Enable the NVIC radio IRQ interrupts.
    - Configure the sub-GHz radio interrupt priority.

The following HAL radio interrupt is called in the `stm32wlxx_it.c` file:

- `HAL_SUBGHZ_IRQHandler` in the `SUBGHZ_Radio_IRQHandler`.

### 3.2 SubGHz data transfers

The **Set** command operation is performed in polling mode with the `HAL_SUBGHZ_ExecSetCmd()` API.

The **Get Status** operation is performed using polling mode with the `HAL_SUBGHZ_ExecGetCmd()` API.

The read/write register accesses are performed in polling mode with following APIs:

- `HAL_SUBGHZ_WriteRegister();`
- `HAL_SUBGHZ_ReadRegister();`
- `HAL_SUBGHZ_WriteRegisters();`
- `HAL_SUBGHZ_ReadRegisters();`
- `HAL_SUBGHZ_WriteBuffer();`
- `HAL_SUBGHZ_ReadBuffer();`

## 4 BSP STM32WL55 Nucleo boards

This BSP driver provides a set of functions to manage radio RF services, such as RF switch settings and control, TCXO settings, and DC/DC settings.

**Note:** *The radio middleware (SubGHz\_Phy) interfaces the radio BSP via `radio_board_if.c/h` interface file. When a custom user board is used, it is recommended to perform one of the following:*

- *First option*
  - *Copy the `BSP/STM32WLxx_Nucleo/` directory.*
  - *Rename and update the user BSP APIs with:*
    - *user RF switch configuration and control (such as pin control or number of port)*
    - *user TCXO configuration*
    - *user DC/DC configuration*
  - *replace in the IDE project the `STM32WLxx_Nucleo` BSP files by the user BSP files.*
- *Second option*
  - *Disable `USE_BSP_DRIVER` in `Core/Inc/platform.h` and implement the BSP functions directly into `radio_board_if.c`.*

### 4.1 Frequency band

Two types of Nucleo board are available on the STM32WL5 devices:

- NUCLEO-WL55JC1: high-frequency-band, tuned for frequency between 865 MHz and 930 MHz
- NUCLEO-WL55JC2: low-frequency-band, tuned for frequency between 470 MHz and 520 MHz

If the user tries to run a firmware compiled at 868 MHz on a low-frequency-band board, very poor RF performances are expected.

The firmware does not check the band of the board on which it runs.

### 4.2 RF switch

The STM32WL Nucleo board embeds an RF 3-port switch (SP3T) to address, with the same board, the following modes:

- high-power transmission
- low-power transmission
- reception

**Table 3. BSP radio switch**

Function	Description
<code>int32_t BSP_RADIO_Init(void)</code>	Initializes the RF switch.
<code>int32_t BSP_RADIO_ConfigRFSwitch(BSP_RADIO_Switch_TypeDef Config)</code>	Configures the RF switch.
<code>int32_t BSP_RADIO_DeInit (void)</code>	De-initializes the RF switch.
<code>int32_t BSP_RADIO_GetTxConfig(void)</code>	Returns the board configuration: high power, low power, or both.

The RF states versus the switch configuration are given in the table below.

**Table 4. RF states versus switch configuration**

RF state	FE_CTRL1	FE_CTRL2	FE_CTRL3
High-power transmission	Low	High	High
Low-power transmission	High	High	High
Reception	High	Low	High

### 4.3 RF wakeup time

The sub-GHz radio wakeup time is recovered with the following API.

**Table 5. BSP radio wakeup time**

Function	Description
<code>uint32_t BSP_RADIO_GetWakeUpTime (void)</code>	Returns RF_WAKEUP_TIME value.

The user must start the TCXO by setting the command `RADIO_SET_TCXOMODE` with a timeout depending of the application.

The timeout value can be updated in `radio_conf.h`. Default template value is the following:

```
#define RF_WAKEUP_TIME 1U
```

### 4.4 TCXO

Various oscillator types can be mounted on the user application. On the STM32WL55 Nucleo boards, a temperature compensated crystal oscillator (TCXO) is used to achieve a better frequency accuracy.

**Table 6. BSP radio TCXO**

Function	Description
<code>uint32_t BSP_RADIO_IsTCXO (void)</code>	Returns IS_TCXO_SUPPORTED value.

The TCXO mode is defined by the STM32WL Nucleo BSP by selecting `USE_BSP_DRIVER` in `Core/Inc/platform.h`.

If the user wants to update this value (no NUCLEO board compliant), or if the BSP is not present, the TXCO mode can be updated in `radio_board_if.h`. Default template value is the following:

```
#define IS_TCXO_SUPPORTED 1U
```

### 4.5 Power regulation

Depending on the user application, a LDO or an SMPS (also named DC/DC) is used for power regulation. An SMPS is used on the STM32WL55 Nucleo boards.

**Table 7. BSP radio SMPS**

Function	Description
<code>uint32_t BSP_RADIO_IsDCDC (void)</code>	Returns IS_DCDC_SUPPORTED value.

The DC/DC mode is defined by the STM32WL Nucleo BSP by selecting `USE_BSP_DRIVER` in `Core/Inc/platform.h`.



If the user wants to update this value (no NUCLEO board compliant), or if the BSP is not present, the DC/DC mode can be updated in `radio_board_if.h`. Default template value is defined below:

```
#define IS_DCDC_SUPPORTED 1U
```

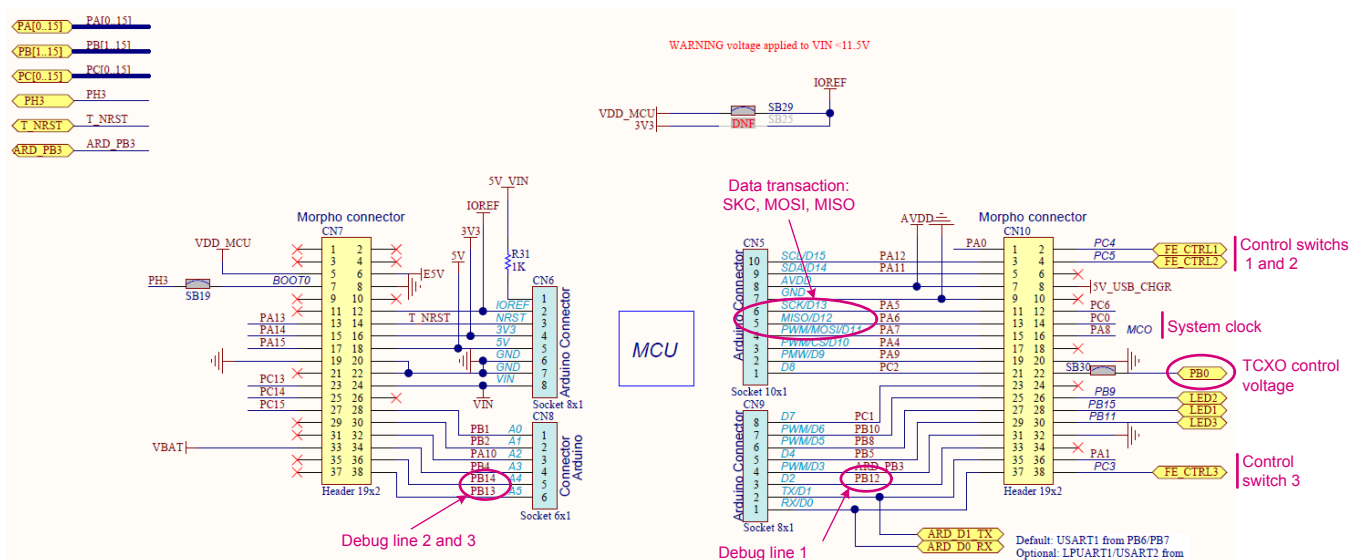
The SMPS on the board can be disabled by setting `IS_DCDC_SUPPORTED = 0`.

## 4.6 STM32WL Nucleo board schematic

The figure below details the STM32WL Nucleo board (MB1389 reference board) schematic, highlighting some useful signals:

- control switches on PC4, PC5 and PC3
- TCXO control voltage pin on PB0
- debug lines on PB12, PB13 and PB14
- system clock on PA8
- SCK on PA5
- MISO on PA6
- MOSI on PA7

**Figure 2. NUCLEO-WL55JC schematic**



## 5 BSP B-WL5M-SUBG1 boards

The BSP driver provides a set of functions to manage radio RF switch settings. It also gives additional components available on B-WL5M-SUBG1 such as external flash memory, LEDs, and sensors (environmental, motion, etc.).

### 5.1 RF switch

The B-WL5M-SUBG1 board embeds a RF switch integrated in the STM32WL5MOC. There is only a read API to return the board configuration.

**Table 8. BSP radio switch**

Function	Description
<code>int32_t BSP_RADIO_GetTxConfig(void)</code>	Returns the board configuration: high power, low power, or both.

### 5.2 External components

The B-WL5M-SUBG1 board embeds multiples components:

- One User PushButton
- 3 LEDs
- Temperature/Barometer Sensors
- Accelerometer, Gyroscope and Magnetometer Sensors
- External flash memory

For more details about the defined APIs, refer to the User Manual document in the BSP directory.

## 6 LoRaWAN stack description

The firmware of the STM32CubeWL MCU Package includes STM32WL resources such as:

- STM32WLxx\_Nucleo drivers
- B-WL5M-SUBG1 drivers
- STM32WLxx HAL drivers
- LoRaWAN middleware
- SubGHz physical layer middleware
- LoRaWAN application example
- Utilities

The LoRaWAN stack middleware for STM32 Series microcontrollers is split into several modules:

**Table 9. LoRaWAN stack description**

Module	Description	Location
LoRaMAC layer	implements the Link Layer specification	Middlewares\Third_Party\LoRaWAN\Mac
Region layer	implements the Regional Parameters specification as dependant interface for the LoRaMAC layer module	Middlewares\Third_Party\LoRaWAN\Mac\Region
LoRa crypto	implements AES/CMAC algorithms and interface with SecureEngine element	Middlewares\Third_Party\LoRaWAN\Crypto
LmHandler	implements the LoRaMac Handler public interface, Certification specifications and FUOTA packages	Middlewares\Third_Party\LoRaWAN\LmHandler
LoRa utilities	implements the common utility functions	Middlewares\Third_Party\LoRaWAN\Utilities

Several LoRaWAN features are implemented in compliance with the LoRa Alliance protocol specifications:

- From the Link Layer specification:
  - On-board LoRaWAN Class A, Class B and Class C protocol stack
  - End-device activation either through OTAA or through activation-by-personalization (ABP)
  - Adaptive data-rate support
- From the Regional Parameters specification:
  - EU 868 MHz ISM band ETSI compliant
  - EU 433 MHz ISM band ETSI compliant
  - US 915 MHz ISM band FCC compliant
  - KR 920 MHz ISM band defined by Korean government
  - RU 864 MHz ISM band defined by Russian regulation
  - CN 779 MHz and CN470Mhz ISM band defined by Chinese government
  - AS 923 MHz ISM band defined by Asian governments
  - AU 915 MHz ISM band defined by Australian government
  - IN 865 MHz ISM band defined by Indian government

Additionally, the LoRaWAN stack integrates:

- Certification solution in accordance with the specifications described as below
- NVM Context Management to prevent power off loss of context
- Low-power integration by standby/sleep radio states

## 6.1 LoRaWAN specifications version

The Link Layer specification and the Regional Parameters specifications are defined by the LoRa-Alliance.

The LoRaWAN stack implements 2 different versions based on the Semtech stack deliveries:

- [LoRaWAN Link Layer 1.0.3 Specification + LoRaWAN 1.0.3 Regional Parameters Specification](#)
- [LoRaWAN Link Layer 1.0.4 Specification \(TS001-1.0.4\) + LoRaWAN 2-1.0.1 Regional Parameters Specification \(RP002-1.0.1\)](#)

It is mandatory to select the adapted version of the stack with the expected LoRaWAN Server configuration.

## 6.2 LoRaWAN commissioning

Depending of the LoRaWAN version used, each end-device has to be personalized and activated with some unique identifier and some network keys shared with your preferred LoRaWAN network.

Activation of an end-device can be achieved in two ways via:

- Over-The-Air Activation (OTAA) when an end-device is deployed or reset.
- Activation By Personalization (ABP) in which the two steps of end-device personalization and activation are done as one step

For the ABP way, it is required to personalize the end-device with:

- a device address (DevAddr)
- an application/join identifier (JoinEUI)
- a network session key (NwkSKey)
- an application session key (AppSKey)

For the OTAA way, it is required to personalize the end-device with:

- a device unique identifier (DevEUI)
- an application/join identifier (JoinEUI)
- a network root key (NwkKey)
- an application root key (AppKey)

NwkSKey encrypts payloads where Fport = 0 and AppSKey encrypts payloads where Fport = 0. The root key is used to derive the session keys after the Join.

---

**Warning:** *As the LoRaWAN integrates several stack version, the application and network keys are not used as expected by the Link Layer v1.0.x definition, but aligned with the Link Layer v1.1.x definition. So, AppS and NwkS keys are derived from the network root key and the application root key is only used to manage the additional packages.*

---

## 6.3 LoRaWAN certification

The system including the NUCLEO-WL55JC board and the STM32CubeWL firmware modem application has been verified by LoRaWAN TestHouse and passed the certification for EU868, IN865, KR920, AS923, and US915 bands.

The LoRaWAN certification implementation depends on the LoRaWAN specification version used:

**Table 10. LoRaWAN certification**

LoRaWAN specification version	LoRaWAN certification specification
LoRaWAN Link Layer 1.0.3 Specification	LoRa Alliance End Device Certification Requirements for AS923MHz ISM Band Devices v1.1.0
	LoRa Alliance End Device Certification Requirements for EU863-870 MHz ISM Band Devices v1.6.0
	LoRa Alliance End Device Certification Requirements for India 865-867 MHz ISM Band v1.1.0
	LoRa Alliance End Device Certification Requirements for South Korea 920-923MHz ISM Band Devices v1.2.0
	LoRa Alliance End Device Certification Requirements for US and Canada 902-928 MHz ISM Band v1.5.0
LoRaWAN Link Layer 1.0.4 Specification (TS001-1.0.4)	LoRaWAN 1.0.4 End Device Certification Requirements for All Regions v1.6.0
	LoRaWAN Certification Protocol 1.0.0 Specification (TS009-1.0.0)

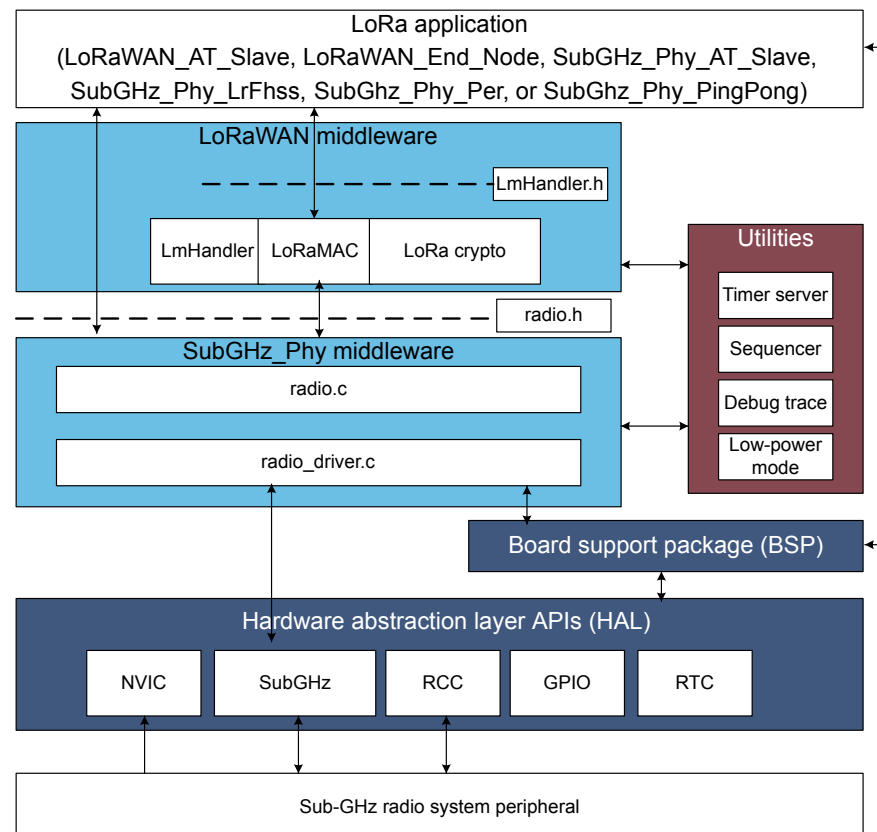
For more details about the certification environment, go to <https://loro-alliance.org/lorawan-certification/>.

## 6.4 Architecture

### 6.4.1 Static view

The figure below describes the main design of the firmware for the LoRa application.

**Figure 3. Static LoRa architecture**



DT70614V1

The HAL uses STM32Cube APIs to drive the MCU hardware required by the application. Only specific hardware is included in the LoRa middleware as it is mandatory to run a LoRa application.

The RTC provides a centralized time unit that continues to run even in low-power mode (Stop 2 mode). The RTC alarm is used to wake up the system at specific timings managed by the timer server.

The SubGHz\_Phy middleware uses the HAL SubGHz to control the radio (see the above figure). For more details, see [Section 8](#).

The MAC controls the SubGHz\_Phy using the 802.15.4 model. The MAC interfaces with the SubGHz\_Phy driver and uses the timer server to add or remove timed tasks.

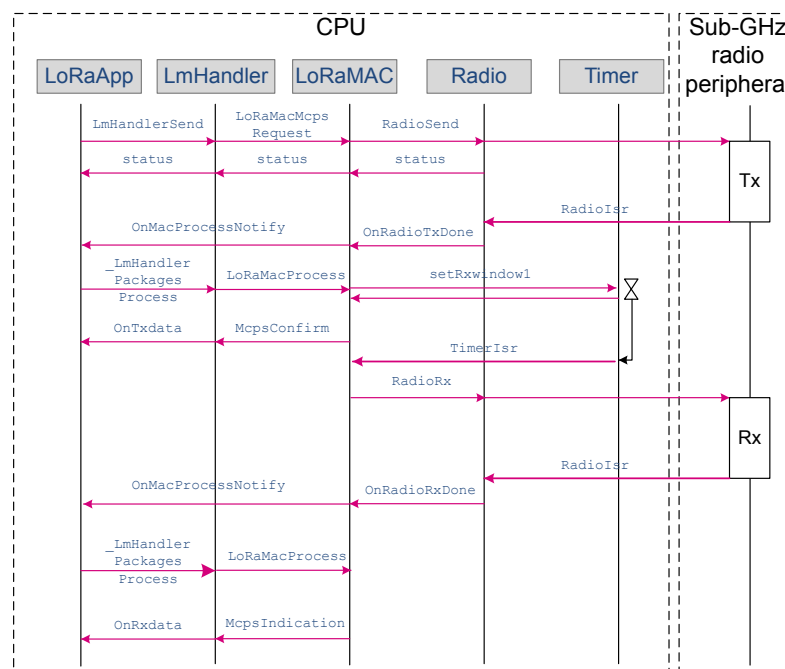
Since the state machine that controls the LoRa Class A is sensitive, an intermediate level of software is inserted (`LmHandler.c`) between the MAC and the application (refer to LoRaMAC driver in the above figure). With a limited set of APIs, the user is free to implement the Class A state machine at application level. For more details, see [Section 7](#).

The application, built around an infinite loop, manages the low-power mode, runs the interrupt handlers (alarm or GPIO) and calls the LoRa Class A if any task must be done.

### 6.4.2 Dynamic view

The MSC (message sequence chart) shown in the figure below depicts a Class A device transmitting an application data and receiving application data from the server.

**Figure 4. Class A Tx and Rx processing MSC**



Once the radio has completed the application data transmission, an asynchronous RadioIRQ wakes up the system. The RadioIsr here calls `txDone` in the handler mode.

All RadioIsr and MAC timer call a `LoRaMacProcessNotify` callback to request the application layer to update the LoRaMAC state and to do further processing when needed.

For instance, at the end of the reception, `rxDone` is called in the ISR (handler), but all the Rx packet processing including decryption must not be processed in the ISR. This case is an example of call sequence. If no data is received into the Rx1 window, then another Rx2 window is launched..

### 6.4.3 Required STM32 peripherals to drive the radio

#### Sub-GHz radio

The sub-GHz radio peripheral is accessed through the `stm32wlxx_hal_subghz` HAL.

The sub-GHz radio issues an interrupt through `SUBGHZ_Radio_IRQHandler` NVIC, to notify a TxDone or RxDone event. More events are listed in the product reference manual.

#### RTC

The RTC (real-time clock) calendar is used as 32-bit counter running in all power modes from the 32 kHz external oscillator. By default, the RTC is programed to provide 1024 ticks (subseconds) per second. The RTC is programed once at hardware initialization (when the MCU starts for the first time). The RTC output is limited to a 32-bit timer that corresponds to about a 48-day period.

**Caution:** *When changing the tick duration, the user must keep it below 1 ms.*

## 7 LoRaWAN middleware description

### 7.1 LoRaWAN middleware initialization

The initialization of the LoRaMAC layer is done through the `LoRaMacInitialization` API, that initializes both the preamble run time of the LoRaMAC layer and the callback primitives of the MCPS and MLME services (see the table below).

**Table 11. LoRaWAN middleware initialization**

Function	Description
<code>LoRaMacStatus_t LoRaMacInitialization</code> <code>(LoRaMacPrimitives_t *primitives,</code> <code>LoRaMacCallback_t *callback,</code> <code>LoRaMacRegion_t region)</code>	Initializes the LoRaMAC layer module (see <a href="#">Section 7.3</a> )

### 7.2 Middleware MAC layer APIs

The provided APIs follow the definition of “primitive” defined in IEEE802.15.4-2011 (refer to document [7]). The interfacing with the LoRaMAC is made through the request-confirm and the indication-response architecture. The application layer can perform a request that the LoRaMAC layer confirms with a confirm primitive. Conversely, the LoRaMAC layer notifies an application layer with the indication primitive in case of any event. The application layer may respond to an indication with the response primitive. Therefore, all the confirm or indication are implemented using callbacks.

The LoRaMAC layer provides the following services:

- MCPS services**  
In general, the LoRaMAC layer uses the MCPS services for data transmissions and data receptions.

**Table 12. MCPS services**

Function	Description
<code>LoRaMacStatus_t LoRaMacMcpsRequest</code> <code>(McpsReq_t* mcpsRequest, bool</code> <code>allowDelayedTx)</code>	Requests to send Tx data.

- MLME services**  
The LoRaMAC layer uses the MLME services to manage the LoRaWAN network.

**Table 13. MLME services**

Function	Description
<code>LoRaMacStatus_t LoRaMacMlmeRequest</code> <code>(MlmeReq_t *mlmeRequest )</code>	Generates a join request or requests for a link check.



- MIB services**  
The MIB stores important runtime information (such as MIB\_NETWORK\_ACTIVATION or MIB\_NET\_ID) and holds the configuration of the LoRaMAC layer (for example the MIB\_ADR, MIB\_APP\_KEY).

Table 14. MIB services

Function	Description
LoRaMacStatus_t LoRaMacMibSetRequestConfirm (MibRequestConfirm_t *mibSet)	Sets attributes of the LoRaMAC layer.
LoRaMacStatus_t LoRaMacMibGetRequestConfirm (MibRequestConfirm_t *mibGet )	Gets attributes of the LoRaMAC layer.

### 7.3 Middleware MAC layer callbacks

The LoRaMAC user event functions primitives (also named callbacks) to be implemented by the application are the following:

Table 15. LoRaMacPrimitives\_t structure description

Function	Description
void (*MacMcpsConfirm ) (McpsConfirm_t *McpsConfirm)	Response to a McpsRequest
Void (*MacMcpsIndication) (McpsIndication_t* McpsIndication, LoRaMacRxStatus_t* RxStatus)	Notifies the application that a received packet is available.
void (*MacMlmeConfirm) (MlmeConfirm_t *MlmeConfirm)	Manages the LoRaWAN network.
void (*MacMlmeIndication) (MlmeIndication_t* MlmeIndication, LoRaMacRxStatus_t* RxStatus)	Notify the MAC layer that a MAC response is available.

### 7.4 Middleware MAC layer timers

Table 16. MAC Timer events

Function	Description
void OnRxWindow1TimerEvent (void* context)	Executed on first Rx window timer event by RxWindow1Delay  Normal frame: RxWindowXDelay = ReceiveDelayX – RADIO_WAKEUP_TIME Join frame: RxWindowXDelay = JoinAcceptDelayX – RADIO_WAKEUP_TIME
void OnRxWindow2TimerEvent (void* context)	Executed on second Rx window timer event by RxWindow2Delay
void OnTxDelayedTimerEvent (void* context)	Executed on duty cycle delayed Tx timer event.
void OnAckTimeoutTimerEvent (void* context)	Executed on AckTimeout timer event by Acknowledge timeout timer.  Used for packet retransmissions (only for LoRaWAN version v1.0.3).

Function	Description
void OnRetransmitTimeoutTimerEvent (void* context)	Executed on AckTimeout timer event by Acknowledge timeout timer. Used for packet retransmissions (only for LoRaWAN version v1.0.4).

## 7.5 Middleware LmHandler application function

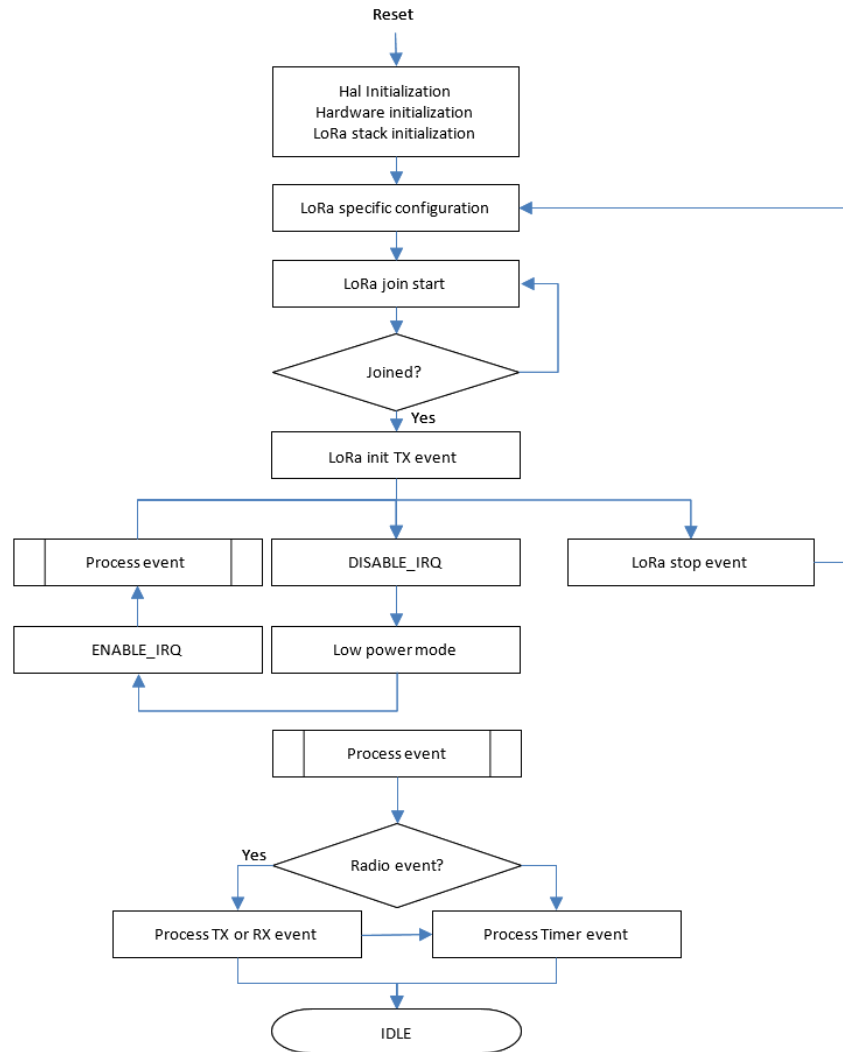
The interface to the MAC is done through the MAC interface `LoRaMac.h` file, in one of the following modes:

- Standard mode  
An interface file (LoRaMAC driver, see [Figure 3](#)) is provided to let the user start without worrying about the LoRa state machine. This file is located in `Middlewares\Third_Party\LoRaWAN\LmHandler\LmHandler.c` and implements:
  - a set of APIs to access to the LoRaMAC services
  - the LoRa certification test cases that are not visible to the application layer
- Advanced mode  
The user accesses directly the MAC layer by including the MAC in the user file.

### 7.5.1 Operation model

The operation model proposed for the LoRaWAN\_End\_Node is based on 'event-driven' paradigms including 'time-driven' (see the figure below). The behavior of the LoRa system is triggered either by a timer event or by a radio event plus a guard transition.

Figure 5. Operation model



The next sections detail the LoRaWAN\_End\_Node and LoRaWAN\_AT\_Slave APIs used to access the LoRaMAC services. The corresponding interface files are located in `Middlewares\Third_Party\LoRaWAN\LmHandler\LmHandler.c`. The user must implement the application with these APIs.

An example of LoRaWAN\_End\_Node application is provided in `\Projects\<target>\Applications\LoRaWAN\LoRaWAN_End_Node\LoRaWAN\App\lora_app.c`.

An example of LoRaWAN\_AT\_Slave application is provided in `\Projects\<target>\Applications\LoRaWAN\LoRaWAN_AT_Slave\LoRaWAN\App\lora_app.c`.

## 7.5.2 Main application functions definition

**Table 17. LmHandler main functions**

Function	Description
<code>LmHandlerErrorStatus_t LmHandlerInit ( LmHandlerCallbacks_t *handlerCallbacks, uint32_t fwVersion)</code>	Initialization of the LoRa finite state machine
<code>LmHandlerErrorStatus_t LmHandlerDeInit(void)</code>	Deinit LoRa state machine, stop all timers, reset MAC parameters, shutdown the radio and remove all existing callbacks references
<code>LmHandlerErrorStatus_t LmHandlerConfigure (LmHandlerParams_t *handlerParams)</code>	Configuration of all applicative parameters
<code>bool LmHandlerIsBusy( void )</code>	Indicates if the LoRaMacHandler is busy.
<code>void LmHandlerProcess( void )</code>	Processes the LoRaMac and Radio events.
<code>void LmHandlerJoin (ActivationType_t mode, bool forceRejoin )</code>	Join request to a network either in OTAA or ABP mode. forceRejoin Flag to force the rejoin even if LoRaWAN context can be restored.
<code>LmHandlerFlagStatus_t LmHandlerJoinStatus (void)</code>	Check whether the Device is joined to the network
<code>LmHandlerErrorStatus_t LmHandlerStop (void)</code>	Stops the LoRa process and waits a new configuration before a rejoin action.
<code>LmHandlerErrorStatus_t LmHandlerHalt (void)</code>	Halt the LoRa stack with break of current process
<code>LmHandlerErrorStatus_t LmHandlerRequestClass (DeviceClass_t newClass)</code>	Requests the MAC layer to change LoRaWAN class.
<code>LmHandlerErrorStatus_t LmHandlerSend (LmHandlerAppData_t *appData, LmHandlerMsgTypes_t isTxConfirmed, bool allowDelayedTx)</code>	Sends an uplink frame. This frame can be either an unconfirmed empty frame or an unconfirmed/confirmed payload frame.
<code>TimerTime_t LmHandlerGetDutyCycleWaitTime (void)</code>	Gets current duty-cycle wait time
<code>LmHandlerErrorStatus_t LmHandlerGetVersion (LmHandlerVersionType_t lmhType, uint32_t *featureVersion)</code>	Returns current LoRaWAN specifications version
<code>LmHandlerErrorStatus_t LmHandlerNvmDataStore (void)</code>	Starts the NVM Data store process (more details in <a href="#">Section 15</a> ).

## 7.6 Application callbacks

Callbacks in the tables below are used for both LoRaWAN\_End\_Node and LoRaWAN\_AT\_Slave applications.

**Table 18. LmHandlerCallbacks\_t callback structure description**

Function	Description
<code>uint8_t GetBatteryLevel (void)</code>	Gets the battery level.
<code>int16_t GetTemperature (void)</code>	Gets the current temperature (in °C) of the device in q7.8 format.
<code>void GetUniqueId (uint8_t *id)</code>	Gets the board 64-bit unique ID.
<code>void GetDevAddr (uint32_t *devAddr)</code>	Gets the board 32-bit unique ID (LSB).

Function	Description
<code>void OnRestoreContextRequest(void *nvm, uint32_t nvm_size)</code>	Restores the NVM Data context from the Flash.
<code>void OnStoreContextRequest(void *nvm, uint32_t nvm_size)</code>	Stores the NVM Data context to the Flash.
<code>void OnMacProcess (void)</code>	Calls LmHandler Process when a Radio IRQ is received.
<code>void OnNvmDataChange (LmHandlerNvmContextStates_t state)</code>	Notifies the upper layer that the NVM context has changed.
<code>void OnNetworkParametersChange (CommissioningParams_t *params)</code>	Notifies the upper layer that network parameters have been set.
<code>void OnJoinRequest (LmHandlerJoinParams_t *params)</code>	Notifies the upper layer that a network has been joined.
<code>void OnTxData (LmHandlerTxParams_t *params)</code>	Notifies the upper layer that a frame has been transmitted.
<code>void OnRxData (LmHandlerAppData_t *appData, LmHandlerRxParams_t *params)</code>	Notifies the upper layer that an applicative frame has been received.
<code>void OnClassChange (DeviceClass_t deviceClass)</code>	Confirms the LoRaWAN device class change.
<code>void OnBeaconStatusChange (LmHandlerBeaconParams_t *params)</code>	Notifies the upper layer that the beacon status has changed.
<code>void OnBeaconStatusChange ( LmHandlerBeaconParams_t *params )</code>	Notifies the upper layer that the beacon status has changed.
<code>void OnSysTimeUpdate (void)</code>	Notifies the upper layer that the system time has been updated.
<code>void OnTxPeriodicityChanged(uint32_t periodicity)</code>	Is called to change applicative Tx frame period. Compliance test protocol callbacks used when TS001-1.0.4 + TS009 1.0.0 are defined.
<code>void OnTxFrameCtrlChanged(LmHandlerMsgTypes_t isTxConfirmed)</code>	Is called to change applicative Tx frame control. Compliance test protocol callbacks used when TS001-1.0.4 + TS009 1.0.0 are defined.
<code>void OnPingSlotPeriodicityChanged(uint8_t pingSlotPeriodicity)</code>	Is called to change the ping period. Compliance test protocol callbacks used when TS001-1.0.4 + TS009 1.0.0 are defined.
<code>void OnSystemReset(void)</code>	Is called to reset the system. Compliance test protocol callbacks used when TS001-1.0.4 + TS009 1.0.0 are defined.

## 7.7

### Extended application functions

These callbacks are used for both LoRaWAN\_End-Node and LoRaWAN\_AT-Slave applications.

**Table 19. Getter/setter functions**

Function	Description
LmHandlerErrorStatus_t LmHandlerGetCurrentClass( DeviceClass_t *deviceClass)	Gets the current LoRaWAN class.
LmHandlerErrorStatus_t LmHandlerGetDevEUI( uint8_t *devEUI)	Gets the LoRaWAN device EUI.
LmHandlerErrorStatus_t LmHandlerSetDevEUI( uint8_t *devEUI)	Sets the LoRaWAN device EUI (if OTAA).
LmHandlerErrorStatus_t LmHandlerGetAppEUI( uint8_t *appEUI)	Gets the LoRaWAN App EUI.
LmHandlerErrorStatus_t LmHandlerSetAppEUI( uint8_t *appEUI)	Sets the LoRaWAN App EUI.
LmHandlerErrorStatus_t LmHandlerGetNetworkID( uint32_t *networkId)	Gets the LoRaWAN Network ID.
LmHandlerErrorStatus_t LmHandlerSetNetworkID( uint32_t networkId)	Sets the LoRaWAN Network ID.
LmHandlerErrorStatus_t LmHandlerGetDevAddr( uint32_t *devAddr)	Gets the LoRaWAN device address.
LmHandlerErrorStatus_t LmHandlerSetDevAddr( uint32_t devAddr)	Sets the LoRaWAN device address (if ABP).
LmHandlerErrorStatus_t LmHandlerGetKey( KeyIdentifier_t keyID, uint8_t *key )	Gets the LoRaWAN Key.
LmHandlerErrorStatus_t LmHandlerSetKey( KeyIdentifier_t keyID, uint8_t *key )	Sets the LoRaWAN Key.
LmHandlerErrorStatus_t LmHandlerGetActiveRegion( LoRaMacRegion_t *region)	Gets the active region.
LmHandlerErrorStatus_t LmHandlerSetActiveRegion( LoRaMacRegion_t region)	Sets the active region.
LmHandlerErrorStatus_t LmHandlerGetAdrEnable( bool *adrEnable)	Gets the adaptive data rate state.
LmHandlerErrorStatus_t LmHandlerSetAdrEnable( bool adrEnable)	Sets the adaptive data rate state.
LmHandlerErrorStatus_t LmHandlerGetTxDataRate( int8_t *txDataRate)	Gets the current Tx data rate.
LmHandlerErrorStatus_t LmHandlerSetTxDataRate( int8_t txDataRate)	Sets the Tx data rate (if adaptive DR disabled).
LmHandlerErrorStatus_t LmHandlerGetDutyCycleEnable	Gets the current Tx duty cycle state.

Function	Description
( bool *dutyCycleEnable)	
LmHandlerErrorStatus_t LmHandlerSetDutyCycleEnable ( bool dutyCycleEnable)	Sets the Tx duty cycle state.
LmHandlerErrorStatus_t LmHandlerGetRX2Params ( RxChannelParams_t *rxParams)	Gets the current Rx2 data rate and frequency conf.
LmHandlerErrorStatus_t LmHandlerSetRX2Params ( RxChannelParams_t *rxParams)	Sets the Rx2 data rate and frequency conf.
LmHandlerErrorStatus_t LmHandlerGetTxPower( int8_t *txPower)	Gets the current Tx power value.
LmHandlerErrorStatus_t LmHandlerSetTxPower( int8_t txPower)	Sets the Tx power value.
LmHandlerErrorStatus_t LmHandlerGetRx1Delay( uint32_t *rxDelay)	Gets the current Rx1 delay (after Tx window).
LmHandlerErrorStatus_t LmHandlerSetRx1Delay( uint32_t rxDelay)	Sets the Rx1 delay (after Tx window).
LmHandlerErrorStatus_t LmHandlerGetRx2Delay( uint32_t *rxDelay)	Gets the current Rx2 delay (after Tx window).
LmHandlerErrorStatus_t LmHandlerSetRx2Delay( uint32_t rxDelay)	Sets the Rx2 delay (after Tx window).
LmHandlerErrorStatus_t LmHandlerGetJoinRx1Delay( uint32_t *rxDelay)	Gets the current Join Rx1 delay (after Tx window).
LmHandlerErrorStatus_t LmHandlerSetJoinRx1Delay( uint32_t rxDelay)	Sets the Join Rx1 delay (after Tx window).
LmHandlerErrorStatus_t LmHandlerGetJoinRx2Delay( uint32_t *rxDelay)	Get the current Join Rx2 delay (after Tx window)
LmHandlerErrorStatus_t LmHandlerSetJoinRx2Delay( uint32_t rxDelay)	Sets the Join Rx2 delay (after Tx window).
LmHandlerErrorStatus_t LmHandlerGetPingPeriodicity ( uint8_t pingPeriodicity)	Gets the current Rx Ping Slot periodicity (If LORAMAC_CLASSB_ENABLED).
LmHandlerErrorStatus_t LmHandlerSetPingPeriodicity ( uint8_t pingPeriodicity)	Sets the Rx Ping Slot periodicity (If LORAMAC_CLASSB_ENABLED).
LmHandlerErrorStatus_t LmHandlerGetBeaconState ( BeaconState_t *beaconState)	Gets the beacon state (If LORAMAC_CLASSB_ENABLED).
LmHandlerErrorStatus_t LmHandlerDeviceTimeReq(void)	Requests network server time update.
LmHandlerErrorStatus_t LmHandlerLinkCheckReq(void)	Requests Link connectivity check.

Function	Description
<code>LmHandlerErrorStatus_t</code> <code>LmHandlerPingSlotReq(uint8_t periodicity)</code>	Informs the server on the ping-slot periodicity to use.



## 8 SubGHz\_Phy layer middleware description

The radio abstraction layer is composed of two layers:

- high-level layer (`radio.c`)  
It provides a high-level radio interface to the stack middleware. It also maintains radio states, processes interrupts and manages timeouts. It records callbacks and calls them when radio events occur.
- low-level radio drivers  
It is an abstraction layer to the RF interface. This layer knows about the register name and structure, as well as detailed sequence. It is not aware about hardware interface.

The SubGHz\_Phy layer middleware contains the radio abstraction layer that interfaces directly on top of the hardware interface provided by BSP (refer [Section 4](#)).

The SubGHz\_Phy middleware directory is divided in two parts:

- `radio.c`: contains a set of all radio generic callbacks, calling `radio_driver` functions. This set of APIs is meant to be generic and identical for all radios.
- `radio_driver.c`: low-level radio drivers

`radio_conf.h` contains radio application configuration like `RF_WAKEUP_TIME`, DC/DC dynamic settings, `XTAL_FREQ`.

### 8.1 Middleware radio driver structure

A radio generic structure (`struct Radio_s Radio {};`) is defined to register all the callbacks, with the fields detailed in the table below:

**Table 20. Radio\_s structure callbacks**

Callback	Description
<code>void Init ( RadioEvents_t *events</code>	Initializes the radio.
<code>RadioState_t GetStatus ( void</code>	Returns the current radio status.
<code>void SetModem ( RadioModems_t modem )</code>	Configures the radio with the given modem.
<code>void SetChannel ( uint32_t freq )</code>	Sets the channel frequency.
<code>bool IsChannelFree ( uint32_t freq, uint32_t rxBandwidth, int16_t rssiThresh, uint32_t maxCarrierSenseTime )</code>	Checks if the channel is free for the given time.
<code>uint32_t Random ( void )</code>	Generates a 32-bit random value based on the RSSI readings.
<code>void SetRxConfig ( RadioModems_t modem, uint32_t bandwidth, uint32_t datarate, uint8_t coderate, uint32_t bandwidthAfc, uint16_t preambleLen, uint16_t symbTimeout, bool fixLen, uint8_t payloadLen, bool crcOn, bool freqHopOn, uint8_t hopPeriod, bool iqInverted, bool rxContinuous )</code>	Sets the reception parameters.
<code>void SetTxConfig ( RadioModems_t modem, int8_t power, uint32_t fdev, uint32_t bandwidth, uint32_t datarate, uint8_t coderate, uint16_t preambleLen, bool fixLen, bool crcOn, bool freqHopOn, uint8_t hopPeriod, bool iqInverted, uint32_t timeout )</code>	Sets the transmission parameters.
<code>bool CheckRfFrequency ( uint32_t frequency )</code>	Checks if the given RF frequency is supported by the hardware.

Callback	Description
<code>uint32_t TimeOnAir ( RadioModems_t modem, uint32_t bandwidth, uint32_t datarate, uint8_t coderate, uint16_t preambleLen, bool fixLen, uint8_t payloadLen, bool crcOn )</code>	Computes the packet time on air (in ms), for the given payload.
<code>radio_status_t Send ( uint8_t *buffer, uint8_t size )</code>	Prepares the packet to be sent and starts the radio in transmission.
<code>void Sleep ( void )</code>	Sets the radio in Sleep mode.
<code>void Standby ( void )</code>	Sets the radio in Standby mode.
<code>void Rx ( uint32_t timeout )</code>	Sets the radio in reception mode for the given time.
<code>void StartCad ( void )</code>	Starts a CAD (channel activity detection).
<code>void SetTxContinuousWave ( uint32_t freq, int8_t power, uint16_t time )</code>	Sets the radio in continuous-wave transmission mode.
<code>int16_t Rssi ( RadioModems_t modem )</code>	Reads the current RSSI value.
<code>void Write ( uint16_t addr, uint8_t data )</code>	Writes the radio register at the specified address.
<code>uint8_t Read ( uint16_t addr )</code>	Reads the radio register at the specified address.
<code>void WriteRegisters ( uint16_t addr, uint8_t *buffer, uint8_t size )</code>	Writes multiple radio registers starting at address.
<code>void ReadRegisters ( uint16_t addr, uint8_t *buffer, uint8_t size )</code>	Reads multiple radio registers starting at address.
<code>void SetMaxPayloadLength ( RadioModems_t modem, uint8_t max )</code>	Sets the maximum payload length.
<code>void SetPublicNetwork ( bool enable )</code>	Sets the network to public or private, and updates the sync byte.
<code>uint32_t GetWakeupTime ( void )</code>	Gets the time required for the radio to exit Sleep mode.
<code>void IrqProcess ( void )</code>	Processes radio IRQ.
<code>void RxBoosted ( uint32_t timeout )</code>	Sets the radio in reception mode with max LNA gain for the given time.
<code>void SetRxDutyCycle ( uint32_t rxTime, uint32_t sleepTime )</code>	Sets the Rx duty-cycle management parameters.
<code>void TxPrbs ( void )</code>	Sets the transmitter in continuous PRBS mode.
<code>void TxCw ( int8_t power )</code>	Sets the transmitter in continuous unmodulated carrier mode.
<code>int32_t RadioSetRxGenericConfig ( GenericModems_t modem, RxConfigGeneric_t* config, uint32_t rxContinuous, uint32_t symbTimeout )</code>	Sets the reception parameters with more configuration fields.
<code>int32_t RadioSetTxGenericConfig ( GenericModems_t modem, TxConfigGeneric_t* config, int8_t power, uint32_t timeout )</code>	Sets the transmission parameters with more configuration fields.
<code>int32_t TransmitLongPacket ( uint16_t payload_size, uint32_t timeout, void (*TxLongPacketGetNextChunkCb) ( uint8_t** buffer, uint8_t buffer_size ) )</code>	Starts sending long Packet, packet may be short.

Callback	Description
<code>int32_t ReceiveLongPacket ( uint8_t boosted_mode, uint32_t timeout, void (*RxLongStorePacketChunkCb) ( uint8_t* buffer, uint8_t chunk_size ) )</code>	Starts receiving long Packet, packet maybe short.
<code>radio_status_t LrFhssSetCfg ( const radio_lr_fhss_cfg_params_t *cfg_params )</code>	Configures the radio LR-FHSS modem parameters.
<code>radio_status_t LrFhssGetTimeOnAirInMs ( const radio_lr_fhss_time_on_air_params_t *params, uint32_t *time_on_air_in_ms );</code>	Gets the time on air in millisecond for LR-FHSS packet.

## 8.2 Radio IRQ interrupts

The possible sub-GHz radio interrupt sources are detailed in the table below.

**Table 21. Radio IRQ bit mapping and definition**

Bit	Source	Description	Packet type	Operation	
0	txDone	Packet transmission finished	LoRa and GFSK	Tx	
1	rxDone	Packet reception finished		GFSK	Rx
2	PreambleDetected	Preamble detected			
3	SyncDetected	Synchronization word valid			
4	HeaderValid	Header valid			
5	HeaderErr	Header error			
6	Err	Preamble, sync word, address, CRC or length error	GFSK	CAD	
	CrcErr	CRC error	LoRa		
7	CadDone	Channel activity detection finished			LoRa
8	CadDetected	Channel activity detected			
9	Timeout	Rx or Tx timeout	LoRa and GFSK	Rx and Tx	
10	-	RFU	-	-	
11					
12					
13					
14	LrFhssHop	Asserted at each hop, in Long Range FHSS, after the PA has ramped-up again	LR-FHSS	Tx	
15	-	RFU	-	-	

For more details, refer to the product reference manual.

## 9 Utilities description

Utilities are located in the \Utilities directory.

Main APIs are described below. Secondary APIs and additional information can be found on the header files related to the drivers.

### 9.1 Sequencer

The sequencer provides a robust and easy framework to execute tasks in the background and enters low-power mode when there is no more activity. The sequencer implements a mechanism to prevent race conditions.

In addition, the sequencer provides an event feature allowing any function to wait for an event (where particular event is set by interrupt) and MIPS and power to be easily saved in any application that implements “run to completion” command.

The `utilities_def.h` file located in the project sub-folder is used to configure the task and event IDs. The ones already listed must not be removed.

The sequencer is not an OS. Any task is run to completion and cannot switch to another task like an RTOS can do on the RTOS tick unless a task suspends itself by calling `UTIL_SEQ_WaitEvt`. Moreover, one single-memory stack is used. The sequencer is an advanced ‘while loop’ centralizing task and event bitmap flags.

The sequencer provides the following features:

- Advanced and packaged while loop system
- Support up to 32 tasks and 32 events
- Task registration and execution
- Wait for an event and set event
- Task priority setting
- Race condition safe low-power entry

To use the sequencer, the application must perform the following:

- Set the number of maximum of supported functions, by defining a value for `UTIL_SEQ_CONF_TASK_NBR`.
- Register a function to be supported by the sequencer with `UTIL_SEQ_RegTask()`.
- Start the sequencer by calling `UTIL_SEQ_Run()` to run a background while loop.
- Call `UTIL_SEQ_SetTask()` when a function needs to be executed.

The sequencer utility is located in `Utilities\sequencer\stm32_seq.c`.

**Table 22. Sequencer APIs**

Function	Description
<code>void UTIL_SEQ_Idle( void )</code>	Called (in critical section - PRIMASK) when there is nothing to execute.
<code>void UTIL_SEQ_Run(UTIL_SEQ_bm_t mask_bm )</code>	Requests the sequencer to execute functions that are pending and enabled in the mask <code>mask_bm</code> .
<code>void UTIL_SEQ_RegTask(UTIL_SEQ_bm_t task_id_bm, uint32_t flags, void (*task) ( void ))</code>	Registers a function (task) associated with a signal ( <code>task_id_bm</code> ) in the sequencer. The <code>task_id_bm</code> must have a single bit set.
<code>void UTIL_SEQ_SetTask( UTIL_SEQ_bm_t taskId_bm, uint32_t task_Prio )</code>	Requests the function associated with the <code>task_id_bm</code> to be executed. The <code>task_prio</code> is evaluated by the sequencer only when a function has finished.  If several functions are pending at any one time, the one with the highest priority (0) is executed.
<code>void UTIL_SEQ_WaitEvt( UTIL_SEQ_bm_t EvtId_bm );</code>	Waits for a specific event to be set.
<code>void UTIL_SEQ_SetEvt( UTIL_SEQ_bm_t EvtId_bm );</code>	Sets an event that waits with <code>UTIL_SEQ_WaitEvt()</code> .

The figure below compares the standard while-loop implementation with the sequencer while-loop implementation.

**Table 23. While-loop standard vs. sequencer implementation**

Standard way	Sequencer way
<pre> While(1) {     if(flag1)     {         flag1=0;         Fct1();     }     if(flag2)     {         flag2=0;         Fct2();     }     /*Flags are checked in critical section to avoid race     conditions*/ /*Note: in the critical section, NVIC re     cords Interrupt source and system will wake up if aslee     p */ __disable_irq();     if (!(flag1    flag2))     {         /*Enter LowPower if nothing else to do*/      LPM_Ent         erLowPower( );     }     __enable_irq();     /*Irq executed here*/ }  Void some_Irq(void) /*handler context*/ {     flag2=1; /*will execute Fct2*/ } </pre>	<pre> /*Flag1 and Flag2 are bitmasks*/ UTIL_SEQ_RegTask(flag1, Fct1()); UTIL_SEQ_RegTask(flag2, Fct2());  While(1) {     UTIL_SEQ_Run(); }  void UTIL_SEQ_Idle( void ) {     LPM_EnterLowPower( ); }  Void some_Irq(void) /*handler cont ext*/ {     UTIL_SEQ_SetTask(flag2); /*will e xecute Fct2*/ } </pre>

## 9.2 Timer server

The timer server allows the user to request timed-tasks execution. As the hardware timer is based on the RTC, the time is always counted, even in low-power modes.

The timer server provides a reliable clock for the user and the stack. The user can request as many timers as the application requires.

The timer server is located in `Utilities\timer\stm32_timer.c`.

**Table 24. Timer server APIs**

Function	Description
UTIL_TIMER_Status_t UTIL_TIMER_Init(void)	Initializes the timer server.
UTIL_TIMER_Status_t UTIL_TIMER_Create (UTIL_TIMER_Object_t *TimerObject, uint32_t PeriodValue, UTIL_TIMER_Mode_t Mode, void (*Callback) (void*), void *Argument)	Creates the timer object and associates a callback function when timer elapses.
UTIL_TIMER_Status_t UTIL_TIMER_SetPeriod(UTIL_TIMER_Object_t *TimerObject, uint32_t NewPeriodValue)	Updates the period and starts the timer with a timeout value (milliseconds).
UTIL_TIMER_Status_t UTIL_TIMER_Start (UTIL_TIMER_Object_t *TimerObject)	Starts and adds the timer object to the list of timer events.
UTIL_TIMER_Status_t UTIL_TIMER_Stop (UTIL_TIMER_Object_t *TimerObject)	Stops and removes the timer object from the list of timer events.

## 9.3 Low-power functions

The `low-power` utility centralizes the low-power requirement of separate modules implemented by the firmware and manages the low-power entry when the system enters idle mode. For example, when the DMA is used to print data to the console, the system must not enter a low-power mode below Sleep mode because the DMA clock is switched off in Stop mode.

The APIs presented in the table below are used to manage the low-power modes of the core MCU. The `low-power` utility is located in `Utilities\lpm\tiny_lpm\stm32_lpm.c`.

**Table 25. Low-power APIs**

Function	Description
void UTIL_LPM_EnterLowPower( void )	Enters the selected low-power mode. Called by the idle state of the system.
void UTIL_LPM_SetStopMode( UTIL_LPM_bm_t lpm_id_bm, UTIL_LPM_State_t state );	Sets Stop mode. <code>id</code> defines the process mode requested: UTIL_LPM_ENABLE or UTIL_LPM_DISABLE. <sup>(1)</sup>
void UTIL_LPM_SetOffMode( UTIL_LPM_bm_t lpm_id_bm, UTIL_LPM_State_t state );	Sets Stop mode. <code>id</code> defines the process mode requested: UTIL_LPM_ENABLE or UTIL_LPM_DISABLE.
UTIL_LPM_Mode_t UTIL_LPM_GetMode( void )	Returns the currently selected low-power mode.

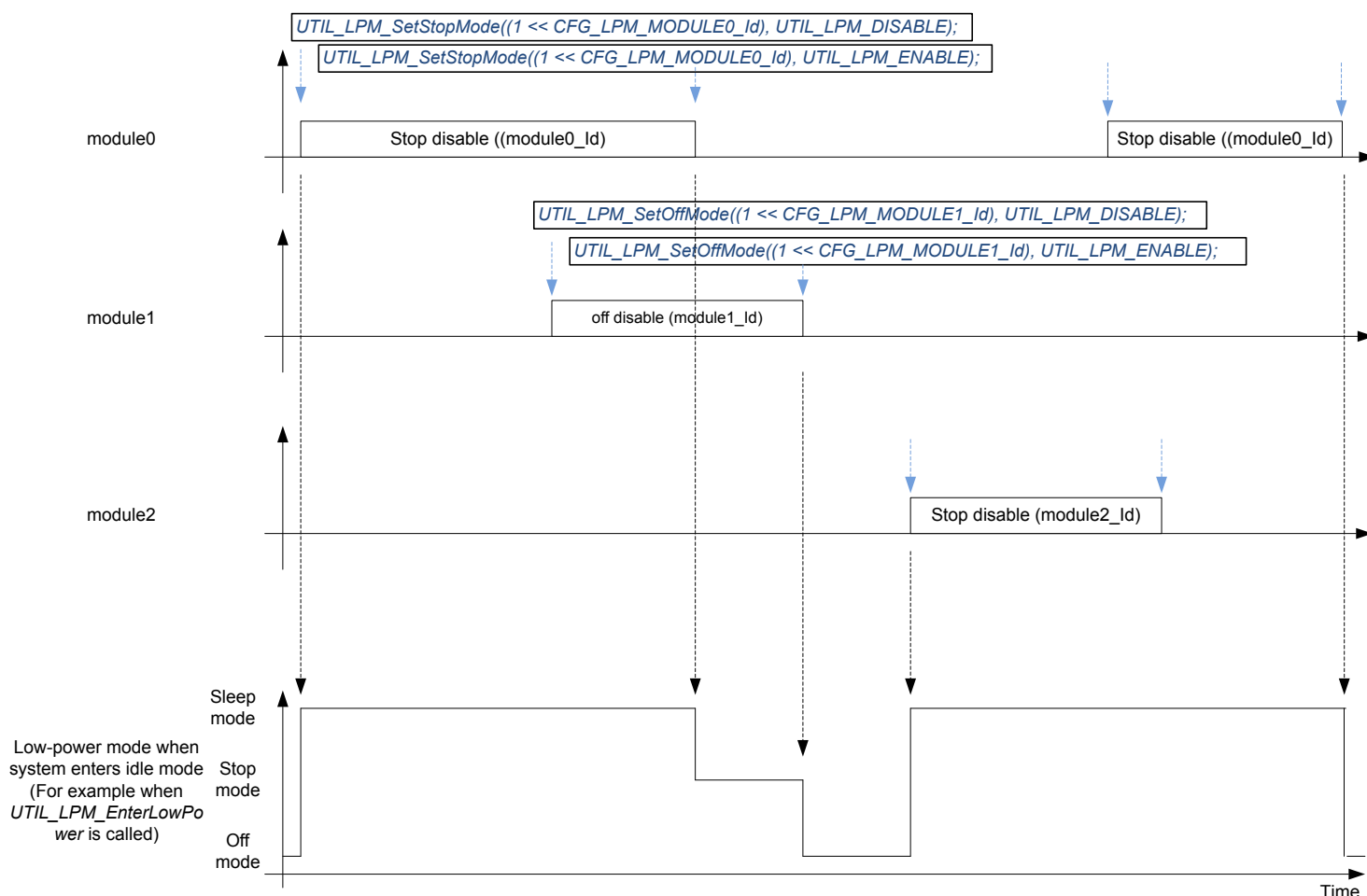
1. *Bitmaps for which the shift values are defined in `utilities_def.h`.*

The default low-power mode is Off mode, which may be Standby or Shutdown mode (defined in `void PWR_EnterOffMode (void)` from Table 26):

- If Stop mode is disabled by at least one firmware module and low-power is entered, Sleep mode is selected.
- If Stop mode is not disabled by any firmware module, Off mode is disabled by at least one firmware module, and low-power is entered. Stop mode is selected.
- If Stop mode is not disabled by any firmware module, Off mode is not disabled by any firmware module, and low-power is entered. Off mode is selected.

Figure 6 depicts the behavior with three different firmware modules setting dependently their low-power requirements and low-power mode, selected when the system enters a low-power mode.

**Figure 6. Example of low-power mode dynamic view**



Low-level APIs must be implemented to define what the system must do to enter/exit a low-power mode. These functions are implemented in `stm32_lpm_if.c` of project sub-folder.

**Table 26. Low-level APIs**

Function	Description
<code>void PWR_EnterSleepMode (void)</code>	API called before entering Sleep mode
<code>void PWR_ExitSleepMode (void)</code>	API called on exiting Sleep mode
<code>void PWR_EnterStopMode (void)</code>	API called before Stop mode
<code>void PWR_ExitStopMode (void)</code>	API called on exiting Stop mode
<code>void PWR_EnterOffMode (void)</code>	API called before entering Off mode
<code>void PWR_ExitOffMode (void)</code>	API called on exiting Off mode

In Sleep mode, the core clock is stopped. Each peripheral clock can be gated or not. The power is maintained on all peripherals.

In Stop 2 mode, most peripheral clocks are stopped. Most peripheral supplies are switched off. Some registers of the peripherals are not retained and must be reinitialized on Stop 2 mode exit. Memory and core registers are retained.

In Standby mode, all clocks are switched off except LSI and LSE. All peripheral supplies are switched off (except BOR, backup registers, GPIO pull, and RTC), with no retention (except additional SRAM2 with retention), and must be reinitialized on Standby mode exit. Core registers are not retained and must be reinitialized on Standby mode exit.

**Note:** *The sub-GHz radio supply is independent of the rest of the system. See the product reference manual for more details.*



## 9.4 System time

The MCU time is referenced to the MCU reset. The system time can record the UNIX® epoch time.

The APIs presented in the table below are used to manage the system time of the core MCU. The `system` utility is located in `Utilities\misc\stm32_system.c`.

**Table 27. System time functions**

Function	Description
<code>void SysTimeSet (SysTime_t sysTime)</code>	Based on an input UNIX epoch in seconds and sub-seconds, the difference with the MCU time is stored in the backup register (retained even in Standby mode). <sup>(1)</sup>
<code>SysTime_t SysTimeGet (void)</code>	Gets the current system time. <sup>(1)</sup>
<code>uint32_t SysTimeMkTime (const struct tm* localtime)</code>	Converts local time into UNIX epoch time. <sup>(2)</sup>
<code>void SysTimeLocalTime (const uint32_t timestamp, struct tm *localtime)</code>	Converts UNIX epoch time into local time. <sup>(2)</sup>

1. *The system time reference is the UNIX epoch starting January 1<sup>st</sup>, 1970.*
2. *SysTimeMkTime and SysTimeLocalTime are also provided to convert epoch into `tm` structure as specified by the `time.h` interface.*

To convert UNIX time to local time, a time zone must be added and leap seconds must be removed. In 2018, 18 leap seconds must be removed. In Paris summertime, there is two hours difference from Greenwich time. Assuming time is set, a local time can be printed on a terminal with the code below.

```
{
SysTime_t UnixEpoch = SysTimeGet();
struct tm localtime;
UnixEpoch.Seconds-=18; /*removing leap seconds*/
UnixEpoch.Seconds+=3600*2; /*adding 2 hours*/
SysTimeLocalTime(UnixEpoch.Seconds, & localtime);
PRINTF ("it's %02dh%02dm%02ds on %02d/%02d/%04d\n\r",
localtime.tm_hour, localtime.tm_min, localtime.tm_sec,
localtime.tm_mday, localtime.tm_mon+1, localtime.tm_year + 1900);
}
```

## 9.5 Trace

The trace module enables printing data on a COM port using DMA. The APIs presented in the table below are used to manage the trace functions.

The trace utility is located in `Utilities\trace\adv_trace\stm32_adv_trace.c`.

**Table 28. Trace functions**

Function	Description
<code>UTIL_ADV_TRACE_Status_t</code> <code>UTIL_ADV_TRACE_Init( void )</code>	TraceInit must be called at the application initialization. Initializes the com or vcom hardware in DMA mode and registers the callback to be processed at DMA transmission completion.
<code>UTIL_ADV_TRACE_Status_t</code> <code>UTIL_ADV_TRACE_COND_FSend(uint32_t VerboseLevel, uint32_t Region, uint32_t TimestampState, const char *strFormat, ...)</code>	Converts string format into a buffer and posts it to the circular queue for printing.
<code>UTIL_ADV_TRACE_Status_t</code> <code>UTIL_ADV_TRACE_COND_Send(uint32_t VerboseLevel, uint32_t Region, uint32_t TimestampState, const uint8_t *pdata, uint16_t length)</code>	Posts data of length = len and posts it to the circular queue for printing.
<code>UTIL_ADV_TRACE_Status_t</code> <code>UTIL_ADV_TRACE_COND_ZCSend_Allocation(uint32_t VerboseLevel, uint32_t Region, uint32_t TimestampState, uint16_t length, uint8_t **pData, uint16_t *FifoSize, uint16_t *WritePos)</code>	Writes user formatted data directly in the FIFO (Z-Cpy).

The status values of the trace functions are defined in the structure `UTIL_ADV_TRACE_Status_t` as follows.

```
typedef enum {
  UTIL_ADV_TRACE_OK                = 0,      /*Operation terminated successfully*/
  UTIL_ADV_TRACE_INVALID_PARAM     = -1,     /*Invalid Parameter*/
  UTIL_ADV_TRACE_HW_ERROR          = -2,     /*Hardware Error*/
  UTIL_ADV_TRACE_MEM_ERROR         = -3,     /*Memory Allocation Error*/
  UTIL_ADV_TRACE_UNKNOWN_ERROR     = -4,     /*Unknown Error*/
  UTIL_ADV_TRACE_GIVEUP            = -5,     /*!< trace give up*/
  UTIL_ADV_TRACE_REGIONMASKED     = -6,     /*!< trace region masked*/
} UTIL_ADV_TRACE_Status_t;
```

The UTIL\_ADV\_TRACE\_COND\_FSend (..) function can be used:

- in polling mode when no real time constraints apply: for example, during application initialization

```
#define APP_PPRINTF(...) do{ } while( UTIL_ADV_TRACE_OK \
!= UTIL_ADV_TRACE_COND_FSend(VLEVEL_ALWAYS, T_REG_OFF, TS_OFF, __VA_ARGS__) )
/* Polling Mode */
```

- in real-time mode: when there is no space left in the circular queue, the string is not added and is not printed out in the com port

```
#define APP_LOG(TS,VL,...)do{
{UTIL_ADV_TRACE_COND_FSend(VL, T_REG_OFF, TS, __VA_ARGS__); }while(0);}
```

where:

- VL is the VerboseLevel of the trace.
- TS allows a timestamp to be added to the trace (TS\_ON or TS\_OFF).

The application verbose level is set in Core\Inc\sys\_conf.h with:

```
#define VERBOSE_LEVEL <VLEVEL>
```

where VLEVEL can be VLEVEL\_OFF, VLEVEL\_L, VLEVEL\_M, or VLEVEL\_H.

UTIL\_ADV\_TRACE\_COND\_FSend (..) is displayed only if VLEVEL ≥ VerboseLevel.

The buffer length can be increased in case it is saturated in Core\Inc\utilities\_conf.h with:

```
#define UTIL_ADV_TRACE_TMP_BUF_SIZE 256U
```

The utility provides hooks to be implemented to forbid the system to enter Stop or lower mode while the DMA is active:

- ```
void UTIL_ADV_TRACE_PreSendHook (void)
{ UTIL_LPM_SetStopMode((1 << CFG_LPM_UART_TX_Id) , UTIL_LPM_DISABLE ); }
```

- ```
void UTIL_ADV_TRACE_PostSendHook (void)
{ UTIL_LPM_SetStopMode((1 << CFG_LPM_UART_TX_Id) , UTIL_LPM_ENABLE );}
```

## 10 LoRaWAN\_End\_Node application

This application measures the battery level and the temperature of the MCU. These values are sent periodically to the LoRa network using the LoRa radio in Class A at 868 MHz.

See [Table 2](#) for applicability.

To launch the LoRaWAN\_End\_Node project, go to

`\Projects\<target>\Applications\LoRaWAN\LoRaWAN_End_Node` and choose the favorite toolchain folder (in the IDE environment). Select the project from the proper target board.

Focus on the configuration described below to setup the application.

### 10.1 LoRaWAN user code sections description

Four main functions are defined as example to implement and use the LoRaWAN stack in

`\Projects\<target>\Applications\LoRaWAN\LoRaWAN_End_Node\LoRaWAN\App\lora_app.c`.

These functions contain example code under the USER CODE Sections, which can be overwritten to handle the specifics features of the application layer.

**Table 29. LoRaWAN user functions**

Function	Description
<code>void LoRaWAN_Init (void)</code>	Initialize the LoRaWAN Application as described in the <a href="#">Figure 5</a> .
<code>static void SendTxData(void)</code>	Example of LoRaWAN Tx process with a generic content payload generation and a <code>LmHandlerSend(...)</code> call with the temporary payload generated buffer.
<code>static void OnTxData(LmHandlerTxParams_t *params)</code>	Example of callback implementation when LoRaWAN application has successfully transmitted a frame. <ul style="list-style-type: none"> <li><b>params</b> parameter contains status of last Tx</li> </ul>
<code>static void OnRxData(LmHandlerAppData_t *appData, LmHandlerRxParams_t *params)</code>	Example of callback implementation when LoRaWAN application has received a frame. <ul style="list-style-type: none"> <li><b>appData</b> parameter contains data received in the last Rx</li> <li><b>params</b> parameter contains status of last Rx</li> </ul>

### 10.2 Device configuration

#### 10.2.1 Activation methods and keys

There are two ways to activate a device on the network, either by OTAA or by ABP.

The global variable "ActivationType" in the application must be adjusted to activate the device with the selected mode.

```
static ActivationType_t ActivationType = LORAWAN_DEFAULT_ACTIVATION_TYPE;
```

in `\Projects\<target>\Applications\LoRaWAN\LoRaWAN_End_Node\LoRaWAN\App\lora_app.c`

and

```
#define LORAWAN_DEFAULT_ACTIVATION_TYPE ACTIVATION_TYPE_OTAA
```

in `\Projects\<target>\Applications\LoRaWAN\LoRaWAN_End_Node\LoRaWAN\App\lora_app.h`

where `ActivationType_t` enum is defined as follows:

```
typedef enum eActivationType {
    ACTIVATION_TYPE_NONE = 0, /* None */
    ACTIVATION_TYPE_ABP = 1, /* Activation by personalization */
    ACTIVATION_TYPE_OTAA = 2, /* Over the Air Activation */
}
```

\Projects\<target>\Applications\LoRaWAN\LoRaWAN\_End\_Node\LoRaWAN\App\se-identity.h file contains commissioning data useful for device activation.

### 10.2.2 LoRa Class activation

By default, Class A is defined. To change the class activation (Class A, Class B, or Class C), the user must:

- set the code

```
#define LORAWAN_DEFAULT_CLASS CLASS_B;
```

in

```
\Projects\<target>\Applications\LoRaWAN\LoRaWAN_End_Node\LoRaWAN\App\lora_app.h
```

- set the code

```
#define LORAMAC_CLASSB_ENABLED 1
```

in

```
\Projects\<target>\Applications\LoRaWAN\LoRaWAN_End_Node\LoRaWAN\App\lorawan_conf.h
```

### 10.2.3 Tx trigger

There are two ways to generate an uplink action, with the `EventType` global variable in

\Projects\<target>\Applications\LoRaWAN\LoRaWAN\_End\_Node\LoRaWAN\App\lora\_app.c:

- by timer
- by an external event

with the code

```
static TxEventType_t EventType = TX_ON_TIMER;
```

where `TxEventType_t` enum is defined as follows:

```
typedef enum TxEventType_e {
    TX_ON_TIMER = 0, /* App data transmission issue based on timer */
    TX_ON_EVENT = 1, /* App data transmission by external event */
}TxEventType_t;
```

The `TX_ON_EVENT` feature uses the button 1 as event in the LoRaWAN\_End\_Node application.

### 10.2.4 Duty cycle

The duty cycle value (in ms) to be used for the application is defined in

\Projects\<target>\Applications\LoRaWAN\LoRaWAN\_End\_Node\LoRaWAN\App\lora\_app.h, with the code below (for example):

```
#define APP_TX_DUTYCYCLE 10000 /* 10s duty cycle */
```

### 10.2.5 Application port

The application port to be used for the application is defined in

\Projects\<target>\Applications\LoRaWAN\LoRaWAN\_End\_Node\LoRaWAN\App\lora\_app.h, with the code below (for example):

```
#define LORAWAN_APP_PORT 2
```

**Note:** *LORAWAN\_APP\_PORT must not use port 224 that is reserved for certification.*

### 10.2.6 Confirm/unconfirmed mode

The confirm/unconfirmed mode to be used for the application is defined in

\Projects\<target>\Applications\LoRaWAN\LoRaWAN\_End\_Node\LoRaWAN\App\lora\_app.h, with the code below:

```
#define LORAWAN_DEFAULT_CONFIRMED_MSG_STATE          LORAMAC_HANDLER_UNCONFIRMED_MSG
```

### 10.2.7 Data buffer size

The size of the buffer sent to the network is defined in

\Projects\<target>\Applications\LoRaWAN\LoRaWAN\_End\_Node\LoRaWAN\App\lora\_app.h, with the code below:

```
#define LORAWAN_APP_DATA_BUFFER_MAX_SIZE            242
```

This value defines the maximum payload size that the device can be sent. But the uplink/downlink payload size is also dependent of the data rate used. For more details, refer to Maximum payload size table of Regional Parameters specification.

### 10.2.8 Adaptive data rate (ADR)

The ADR is enabled in

\Projects\<target>\Applications\LoRaWAN\LoRaWAN\_End\_Node\LoRaWAN\App\lora\_app.h, with the code below:

```
#define LORAWAN_ADR_STATE                          LORAMAC_HANDLER_ADR_ON
```

When the ADR is disabled, the default data rate is set in

\Projects\<target>\Applications\LoRaWAN\LoRaWAN\_End\_Node\LoRaWAN\App\lora\_app.h, with the code below:

```
#define LORAWAN_DEFAULT_DATA_RATE                  DR_0
```

where the expected value must be in the 0-15 range (depending on the selected region configuration. For more details, refer to TX Data rate table of Regional Parameters specification.

### 10.2.9 Tx power

The default Tx Power used at Join and first uplinks (until a LinkADRRReq is received) can be modified in \Projects\<target>\Applications\LoRaWAN\LoRaWAN\_End\_Node\LoRaWAN\App\lora\_app.h with the code below:

```
#define LORAWAN_DEFAULT_TX_POWER                   TX_POWER_0
```

where the expected value must be in the 0-15 range (depending on the selected region configuration). For more details, refer to TX power table of Regional Parameters specification.

### 10.2.10 Ping periodicity

If the device is able to switch in Class B, the default Rx Ping slot periodicity must be enabled in

\Projects\<target>\Applications\LoRaWAN\LoRaWAN\_End\_Node\LoRaWAN\App\lora\_app.h with the code below.

```
#define LORAWAN_DEFAULT_PING_SLOT_PERIODICITY 4
```

where the expected value must be in the 0-7 range.

The resulting period time is defined by:

```
period = 2^LORAWAN_DEFAULT_PING_SLOT_PERIODICITY
```

### 10.2.11 LoRa band selection

The region and its corresponding band selection are defined in `\Projects\<target>\Applications\LoRaWAN\LoRaWAN_End_Node\LoRaWAN\Target\lorawan_conf.h` with the code below:

```
#define REGION_AS923
#define REGION_AU915
#define REGION_CN470
#define REGION_CN779
#define REGION_EU433
#define REGION_EU868
#define REGION_KR920
#define REGION_IN865
#define REGION_US915
#define REGION_RU864
```

**Note:** *Several regions can be enabled at compilation on the same application.*

Depending on the region, the default active region must be defined in `\Projects\<target>\Applications\LoRaWAN\LoRaWAN_End_Node\Core\Inc\sys_conf.h` with the code (example for Europe):

```
#define ACTIVE_REGION LORAMAC_REGION_EU868
```

When the REGION\_AS923 is enabled, it is also possible to select the associated channel plan with the code below:

```
#define REGION_AS923_DEFAULT_CHANNEL_PLAN CHANNEL_PLAN_GROUP_AS923_1
```

Possible selections:

- CHANNEL\_PLAN\_GROUP\_AS923\_1 (Default configuration. Freq offset = 0.0 MHz / Freq range = 915-928 MHz)
- CHANNEL\_PLAN\_GROUP\_AS923\_2 (Freq offset = -1.80 MHz / Freq range = 915-928 MHz)
- CHANNEL\_PLAN\_GROUP\_AS923\_3 (Freq offset = -6.60 MHz / Freq range = 915-928 MHz)
- CHANNEL\_PLAN\_GROUP\_AS923\_4 (Freq offset = -5.90 MHz / Freq range = 917-920 MHz)
- CHANNEL\_PLAN\_GROUP\_AS923\_1\_JP (Freq offset = 0.0 MHz / Freq range = 920.6-923.4 MHz)

### 10.2.12 Context management

The context management is defined in

`\Projects\<target>\Applications\LoRaWAN\LoRaWAN_End_Node\LoRaWAN\App\lorawan_conf.h` with the code below:

```
#define CONTEXT_MANAGEMENT_ENABLED 1
```

More details of this feature in [Section 15](#).

### 10.2.13 LoRaWAN version

The LoRaWAN version can be chosen to use the expected feature or to be aligned with the required version defined by the Network Server. This version is defined in `\Projects\<target>\Applications\LoRaWAN\LoRaWAN_End_Node\LoRaWAN\App\lorawan_conf.h` with the code below:

```
#define LORAMAC_SPECIFICATION_VERSION 0x01000400
```

Possible values: 0x01000300 or 0x01000400. For more details, see [Section 6.1](#).

### 10.2.14 LoRaWAN packages

The LoRaWAN packages are some additional features to manage the clock sync, the multicast and the fragmentation features:

- Application Layer Clock Synchronization (Package ID: 1, Default Port: 202)
- Remote Multicast Setup (Package ID: 2, Default Port: 200)
- Fragmented Data Block Transport (Package ID: 3, Default Port: 201)
- Firmware Management Protocol (Package ID: 4, Default Port: 203)

These packages are enabled in `\Projects\<target>\Applications\LoRaWAN\LoRaWAN_End_Node\LoRaWAN\App\lorawan_conf.h` with the code below:

```
#define LORAWAN_DATA_DISTRIB_MGT 0
```

Additionally, it is required to include all source files available in `Middlewares\Third_Party\LoRaWAN\LmHandler\Packages`

### 10.2.15 LoRaWAN packages version

The LoRaWAN packages version can be chosen to use the required version defined by the Network Server. This version is defined in `\Projects\<target>\Applications\LoRaWAN\LoRaWAN_End_Node\LoRaWAN\App\lorawan_conf.h` with the code below:

```
#define LORAWAN_PACKAGES_VERSION 1
```

Possibles values:

- v1.0.0 packages including:
  - Application Layer Clock Synchronization v1.0.0
  - Remote Multicast Setup v1.0.0
  - Fragmented Data Block Transport v1.0.0
- v2.0.0 packages including:
  - Application Layer Clock Synchronization v2.0.0
  - Remote Multicast Setup v2.0.0
  - Fragmented Data Block Transport v2.0.0
  - Firmware Management Protocol v1.0.0

### 10.2.16 Debug switch

The debug mode is enabled in `\Projects\<target>\Applications\LoRaWAN\LoRaWAN_End_Node\Core\Inc\sys_conf.h` with the code below:

```
#define DEBUGGER_ENABLED 1 /* ON=1, OFF=0 */
```

The debug mode enables the SWD pins, even when the MCU goes in low-power mode.

**Note:** *In order to enable a true low-power, #define DEBUGGER\_ENABLED must be reset.*

Some additional defines activate monitoring (probes) of some internal RF signal for debug:

```
#define DEBUG_SUBGHZSPI_MONITORING_ENABLED 0
```

```
#define DEBUG_RF_NRESET_ENABLED_ENABLED 0
```

```
#define DEBUG_RF_HSE32RDY_ENABLED_ENABLED 0
```

```
#define DEBUG_RF_SMPSRDY_ENABLED 0
```

```
#define DEBUG_RF_LDORDY_ENABLED 0
```

```
#define DEBUG_RF_DTB1_ENABLED 0
```

```
#define DEBUG_RF_BUSY_ENABLED 0
```

### 10.2.17 Low-power switch

When the system is in idle, it enters the low-power Stop 2 mode.

This entry in Stop 2 mode can be disabled in `\Projects\<target>\Applications\LoRaWAN\LoRaWAN_End_Node\Core\Inc\sys_conf.h` with the code below:

```
#define LOW_POWER_DISABLE 0 /* Low power enabled = 0, Low power disabled = 1 */
```



where:

- Low power enabled = 0 means the MCU enters to Stop 2 mode  
Stop 2 is a Stop mode with low-power regulator and  $V_{DD12I}$  interruptible digital core domain supply OFF.  
Less peripherals are activated than in low-power Stop 1 mode to reduce power consumption.  
Refer to document [6] for more details.
- Low power disabled = 1 means the MCU enters only in Sleep mode.

## 10.2.18

### Trace level

The trace mode is enabled in \Projects\<target>

\Applications\LoRaWAN\LoRaWAN\_End\_Node\Core\Inc\sys\_conf.h with the code below:

```
#define APP_LOG_ENABLED 1
```

The trace level is selected in \Projects\<target>

\Applications\LoRaWAN\LoRaWAN\_End\_Node\Core\Inc\sys\_conf.h with the code below :

```
#define VERBOSE_LEVEL VLEVEL_M
```

The following trace levels are proposed:

- VLEVEL\_OFF: all traces disabled
- VLEVEL\_L: functional traces enabled
- VLEVEL\_M: debug traces enabled
- VLEVEL\_H: all traces enabled

## 10.3 Device configuration summary for LoRaWAN\_End\_Node application

**Table 30. Switch options for LoRaWAN\_End\_Node application configuration**

Project module	Detail	Switch option	Definition	Location
LoRa stack	Unique device identification	LORAWAN_DEVICE_EUI	End-device IEEE Extended Unique Identifier (EUI)	se-identity.h
	Join EUI	LORAWAN_JOIN_EUI	Application or Join server IEEE EUI (only used in OTAA)	
	End-device address	LORAWAN_DEVICE_ADDRESS	End-device address on the network (only used in ABP, generated by Network Server in OTAA)	
	App Root Key	LORAWAN_APP_KEY	Application root key used to derive application session keys	
	Nwk Root Key	LORAWAN_NWK_KEY	Network root key used to derive session keys at Join in OTAA	
	App Session Key	LORAWAN_APP_S_KEY	Application Session key used to encrypt/decrypt payload with Application Server (only used in ABP, generated by root key in OTAA)	
	Nwk Session Key	LORAWAN_NWK_S_KEY	Network Session key used to encrypt/decrypt payload with Network Server (only used in ABP, generated by root key in OTAA)	
	Supported regions	REGION_EU868	Regions supported by the device	lorawan_conf.h
		REGION_EU433		
		REGION_US915		
		REGION_AS923		
		REGION_AU915		
		REGION_CN470		
		REGION_CN779		
		REGION_IN865		
		REGION_RU864		
		REGION_KR920		
	AS923 channel plan	REGION_AS923_DEFAULT_CHANNEL_PLAN	Channel plan for region AS923	
	Limited channels	HYBRID_ENABLED	Limits the number of usable channels by default for AU915, CN470 and US915 regions.	
	Read keys	KEY_EXTRACTABLE	Defines the read access of the keys in the memory.	
	Optional class	LORAMAC_CLASSB_ENABLED	End-device Class B capability	
	Context Management	CONTEXT_MANAGEMENT_ENABLED	Stores and restores the LoRaWAN stack context.	
Application	Tx trigger	EventType = TX_ON_TIMER	Tx trigger method	lora_app.c
	Class choice	LORAWAN_DEFAULT_CLASS	Sets class of the device.	lora_app.h
	Duty cycle	APP_TX_DUTYCYCLE	Time period between two Tx sent	

Project module	Detail	Switch option	Definition	Location
Application	App port	LORAWAN_USER_APP_PORT	LoRa port used by the Tx data frame	lora_app.h
	Confirmed mode	LORAWAN_DEFAULT_CONFIRMED_MSG_STATE	Confirmed mode selection	
	Adaptive data rate	LORAWAN_ADR_STATE	ADR selection	
	Default data rate	LORAWAN_DEFAULT_DATA_RATE	Data rate if ADR is disabled	
	Maximum data buffer size	LORAWAN_APP_DATA_BUFFER_MAX_SIZE	Buffer size definition	
	Tx Power	LORAWAN_DEFAULT_TX_POWER	Default Tx output power at startup	
	Ping period	LORAWAN_DEFAULT_PING_SLOT_PERIODICITY	Rx ping slot period	
	Network Join activation	LORAWAN_DEFAULT_ACTIVATION_TYPE	Activation procedure default choice	
	Initial region	ACTIVE_REGION	Region used at device startup	
	Warm-up Join	LORAWAN_FORCE_REJOIN_AT_BOOT	Force join even if the NVM context is restored	
	Debug	DEBUGGER_ENABLED	Enables SWD pins.	sys_conf.h
	Low power	LOW_POWER_DISABLE	Disables low-power mode.	
	Trace enable	APP_LOG_ENABLED	Enables the trace mode.	
	Trace level	VERBOSE_LEVEL	Sets the trace level.	

## 11 SubGhz\_Phy\_PingPong application

This application shows a simple Rx/Tx RF link between the two PingPong devices (one called Ping, the other called Pong).

By default, each PingPong device starts as a master, transmits a 'Ping' message, and waits for an answer. At startup, each PingPong device has its two LEDs blinking. When the boards are synchronized (Tx window of one board aligned with Rx window of the other board), the Ping device (board receiving 'Ping' message) makes the green LED blinking, and the Pong device (board receiving 'Pong' message) makes the red LED blinking. The first PingPong device that receives a 'Ping' message becomes a slave and answers with a 'Pong' message to the master.

See Table 2 for applicability.

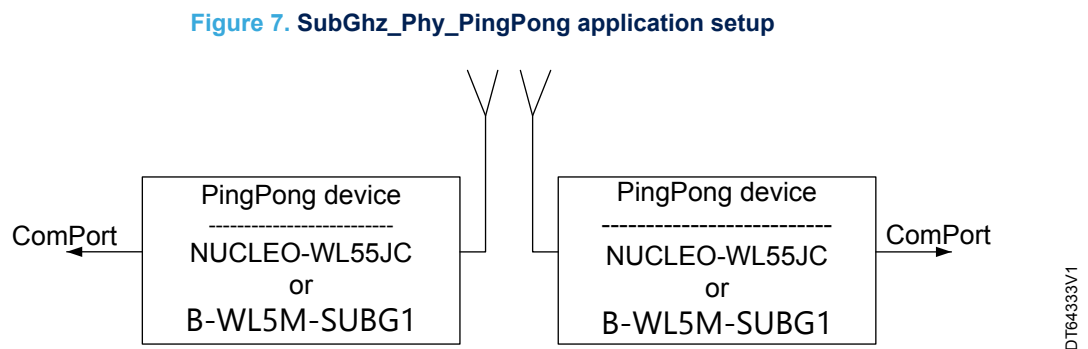
To launch the SubGhz\_Phy\_PingPong project, the user must go to

`\Projects\<target>\Applications\SubGhz_Phy\SubGhz_Phy_PingPong` and follow the same procedure as for the LoRaWAN\_End\_Node project to launch the preferred toolchain. Select the project from the proper target board.

### 11.1 SubGhz\_Phy\_PingPong hardware/software environment setup

To setup the STM32WL board (NUCLEO-WL55JC or B-WL5M-SUBG1), connect this board to the computer with a USB Type-A to Mini-B cable to the integrated ST-LINK connector (CN1) if NUCLEO-WL55JC, or to an external ST-LINK-V3 on debug connector (CN3) if B-WL5M-SUBG1.

Compile and load the project into two boards and open the preferred hyperterminal on the serial port of each of them, as shown in the figure below:



### 11.2 Device configuration

#### 11.2.1 Modulation definition

This application proposes to use two modulations: LoRa or FSK. To configure one modulation, the user must update these defines in

`\Projects\<target>\Applications\SubGhz_Phy\SubGhz_Phy_PingPong\SubGhz_Phy\App\subghz_phy_app.h` as shown in the table below:

**Table 31. SubGhz\_Phy\_PingPong modulation configuration**

LoRa	FSK
<code>#define USE_MODEM_LORA 1</code>	<code>#define USE_MODEM_LORA 0</code>
<code>#define USE_MODEM_FSK 0</code>	<code>#define USE_MODEM_FSK 1</code>

### 11.2.2 Payload length

Each Tx payload is defined by the string PING or PONG followed by a sequence of 0. The length of this payload is defined in

\Projects\<target>\Applications\SubGhz\_Phy\SubGhz\_Phy\_PingPong\SubGhz\_Phy\App\subghz\_phy\_app.h, with the code below:

```
#define PAYLOAD_LEN 64
```

The typical payload size is generally between 51 and 242.

It is mandatory the set a value equal to or less than the maximum buffer size defined in

\Projects\<target>\Applications\SubGhz\_Phy\SubGhz\_Phy\_PingPong\SubGhz\_Phy\App\subghz\_phy\_app.c, with the code below:

```
#define MAX_APP_BUFFER_SIZE 255
```

### 11.2.3 Region and frequency

The Frequency value to be used for the application is defined in \Projects\<target>\Applications\SubGhz\_Phy\SubGhz\_Phy\_PingPong\SubGhz\_Phy\App\subghz\_phy\_app.h, with the code below (for example):

```
#define RF_FREQUENCY 868000000 /* Hz */
```

### 11.2.4 Bandwidth, spreading factor and data rate

Depending on the chosen modulation, it is possible to define the bandwidth, the spreading factor and the data rate in \Projects\<target>\Applications\SubGhz\_Phy\SubGhz\_Phy\_PingPong\SubGhz\_Phy\App\subghz\_phy\_app.h, as shown in the table below:

**Table 32. SubGhz\_Phy\_PingPong bandwidth, SF and DR configuration**

LoRa	FSK
#define LORA_BANDWIDTH 0	#define FSK_BANDWIDTH 50000
#define LORA_SPREADING_FACTOR 7	#define FSK_DATARATE 50000

The expected value of LORA\_BANDWIDTH must be in the 0-2 range, corresponding the equivalent frequency: [0: 125 kHz, 1: 250 kHz, 2: 500 kHz].

The expected value of LORA\_SPREADING\_FACTOR must be in the 7-12 range. The spreading factor influences the time it takes to transmit a frame and the transmission power.

The expected value of FSK\_BANDWIDTH must be in the 4800-500000 range (in Hz).

The expected value of FSK\_DATARATE equivalent to the bitrate value, is typically defined a 50 kbps.

### 11.2.5 Preamble length

All transmitted/received packets contain a preamble (typically with eight symbols), a header, the payload (size defined in section 10.2.2), and a CRC field.

The preamble field size can be updated in

\Projects\<target>\Applications\SubGhz\_Phy\SubGhz\_Phy\_PingPong\SubGhz\_Phy\App\subghz\_phy\_app.h by these defines as shown in the table below:

**Table 33. SubGhz\_Phy\_PingPong preamble configuration**

LoRa	FSK
#define LORA_PREAMBLE_LENGTH 8	#define FSK_PREAMBLE_LENGTH 5
/* default LoRa preamble size */	/* default FSK preamble size */

## 11.3 Device configuration summary for SubGhz\_Phy\_PingPong application

**Table 34. Switch options for SubGhz\_Phy\_PingPong application configuration**

Project module = Application

Detail	Switch option	Definition	Location
Rx/Tx configuration	RX_TIMEOUT_VALUE	Rx window timeout	subghz_phy_app.c
	TX_TIMEOUT_VALUE	Tx window timeout	
	MAX_APP_BUFFER_SIZE	Max data buffer size	
	RX_TIME_MARGIN	Time between the end of Rx and start of Tx	
	FSK_AFC_BANDWIDTH	AFC bandwidth (in Hz)	
	LED_PERIOD_MS	LED blink period	
Modulation configuration	USE_MODEM_LORA	LoRa modem selected	subghz_phy_app.h
	USE_MODEM_FSK	FSK modem selected	
LoRa/FSK common parameters	RF_FREQUENCY	Frequency used by the transceiver	
	TX_OUTPUT_POWER	RF output power: -17 to 22 dBm	
	PAYLOAD_LEN	Data buffer size	
LoRa specific parameters	LORA_BANDWIDTH	Bandwidth: • 0: 125 kHz • 1: 250 kHz • 2: 500 kHz • 3: Reserved	
	LORA_SPREADING_FACTOR	Spreading factor: SF7 to SF12	
	LORA_CODINGRATE	Coding rate: • 1: 4/5 • 2: 4/6 • 3: 4/7 • 4: 4/8	
	LORA_PREAMBLE_LENGTH	Length of Tx/Rx preamble	
	LORA_SYMBOL_TIMEOUT	Number of symbols checked before timeout	
	LORA_FIX_LENGTH_PAYLOAD_ON	Fix/dynamic length payload option	
	LORA_IQ_INVERSION_ON	IQ inversion option	
FSK specific parameters	FSK_FDEV	Frequency deviation (in Hz)	
	FSK_DATARATE	Data rate (in bit/s)	
	FSK_BANDWIDTH	Bandwidth (in Hz)	
	FSK_PREAMBLE_LENGTH	Length of Tx/Rx preamble	
	FSK_FIX_LENGTH_PAYLOAD_ON	Fix/dynamic length payload option	
Debug	DEBUGGER_ENABLED	Enables SWD pins.	sys_conf.h
Low power	LOW_POWER_DISABLE	Disables low-power mode.	
Trace enable	APP_LOG_ENABLED	Enables the trace mode.	
Trace level	VERBOSE_LEVEL	Sets the trace level.	

## 12 SubGHz\_Phy\_LrFhss application

The SubGHz\_Phy\_LrFhss application is a fast frequency hopping spread spectrum (FHSS) modulation test based on Tx only generation from the device to the gateway.

The transmission starts in LR-FHSS with a payload of 64 bytes. This application requires a gateway solution integrating the LR-FHSS modulation.

See Table 2 for applicability.

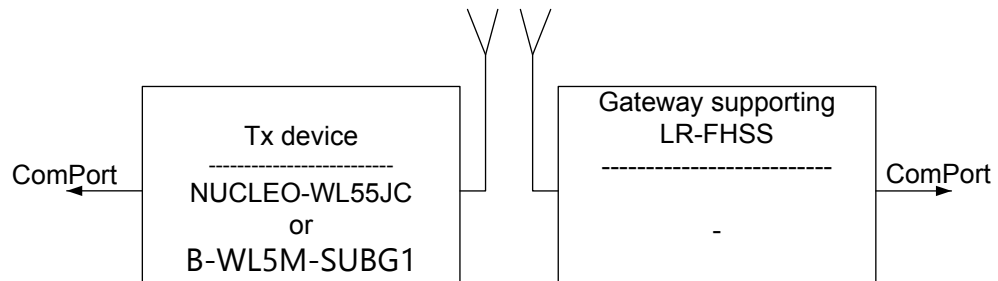
To launch the SubGHz\_Phy\_LrFhss project, the user must go to

`\Projects\<target>\Applications\SubGHz_Phy\SubGHz_Phy_LrFhss`, and follow the same procedure as for the LoRaWAN\_End\_Node project to launch the preferred toolchain.

### 12.1 SubGHz\_Phy\_LrFhss hardware/software environment setup

To setup the STM32WL Nucleo board (NUCLEO-WL55JC), connect this board to the computer with a USB Type-A to Mini-B cable to the ST-LINK connector (CN1), as shown in the figure below:

Figure 8. SubGHz\_Phy\_LrFhss application setup



DTT1515V1

### 12.2 Device configuration summary for SubGHz\_Phy\_LrFhss application

Table 35. Switch options for SubGHz\_Phy\_LrFhss application configuration

Project module = Application

Detail	Switch option	Definition	Location
Rx/Tx configuration	TX_TIMEOUT_VALUE	Tx window timeout	subghz_phy_app.c
	MAX_APP_BUFFER_SIZE	Max data buffer size	
Common parameters	PAYLOAD_LEN	Data buffer size	subghz_phy_app.h
Debug	DEBUGGER_ENABLED	Enables SWD pins.	sys_conf.h
Low power	LOW_POWER_DISABLE	Disables the low-power mode.	
Trace enable	APP_LOG_ENABLED	Enables the trace mode.	
Trace level	VERBOSE_LEVEL	Sets the trace level.	

## 13 SubGhz\_Phy\_Per application

The SubGhz\_Phy\_Per application is a packet-error-rate test with IBM® whitening between one Tx device and one Rx device.

### Tx device

Update `#define TEST_MODE to RADIO_TX` in `/SubGhz_Phy/App/subghz_phy_app.c`. Compile and load. The packet content is `preamble | sync | payload length | payload | crc` where:

- `crc` is calculated using `payload length` and `payload`.
- Whitening is calculated over `payload length | payload | crc`.

The transmission starts by default in GFSK 50 Kbit/s with a payload of 64 bytes. These parameters can be modified in `/SubGhz_Phy/App/subghz_phy_app.h` with the same defines as described in [Section 11.2](#).

In addition, the application can be modified in runtime by the user buttons:

- The user button 1 increments packet length by 16 bytes.
- The user button 2 increments packet length by 1 byte.
- The user button 3 toggles packet payload mode from ramp (0x00, 0x01..) to prbs9.

The blue LED is on while radio in Tx.

### Rx device

Update `#define TEST_MODE to RADIO_RX` in `/SubGhz_Phy/App/subghz_phy_app.c`. Compile and load. The green LED is on when Rx is OK. The red LED is on when Rx is KO.

See [Table 2](#) for applicability.

To launch the SubGhz\_Phy\_Per project, the user must go to

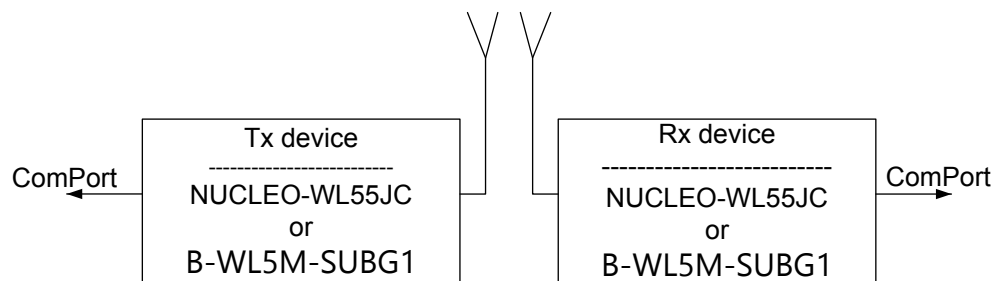
`\Projects\<target>\Applications\SubGhz_Phy\SubGhz_Phy_Per`, and follow the same procedure as for the LoRaWAN\_End\_Node project to launch the preferred toolchain.

### 13.1 SubGhz\_Phy\_Per hardware/software environment setup

To setup the STM32WL board (NUCLEO-WL55JC or B-WL5M-SUBG1), connect this board to the computer with a USB Type-A to Mini-B cable to the integrated ST-LINK connector (CN1) if NUCLEO-WL55JC, or to an external ST-LINK-V3 on debug connector (CN3) if B-WL5M-SUBG1.

Compile and load the project with each mode (TX and RX) into the 2 boards and open the preferred hyperterminal on the serial port of each of them, as shown in the figure below:

Figure 9. SubGhz\_Phy\_Per application setup





## 13.2 Device configuration summary for SubGhz\_Phy\_Per application

**Table 36. Switch options for SubGhz\_Phy\_Per application configuration**

Project module = Application

Detail	Switch option	Definition	Location
Rx/Tx configuration	RX_TIMEOUT_VALUE	Rx window timeout	subghz_phy_app.c
	TX_TIMEOUT_VALUE	Tx window timeout	
	MAX_APP_BUFFER_SIZE	Max data buffer size	
	RX_CONTINUOUS_ON	RX mode continuous or with timeout	
	TEST_MODE	Device mode: <ul style="list-style-type: none"> <li>RADIO_TX: send packet indefinitely</li> <li>RADIO_RX: receive packet indefinitely</li> </ul>	
	APP_LONG_PACKET	Long packet option <sup>(1)(2)</sup>	
Modulation configuration	USE_MODEM_LORA	LoRa modem selected	subghz_phy_app.h
	USE_MODEM_FSK	FSK modem selected	
LoRa/FSK common parameters	RF_FREQUENCY	Frequency used by the transceiver	
	TX_OUTPUT_POWER	RF output power: -17 to 22 dBm	
	PAYLOAD_LEN	Data buffer size	
LoRa specific parameters	LORA_BANDWIDTH	Bandwidth: <ul style="list-style-type: none"> <li>0: 125 kHz</li> <li>1: 250 kHz</li> <li>2: 500 kHz</li> <li>3: Reserved</li> </ul>	
	LORA_SPREADING_FACTOR	Spreading factor: SF7 to SF12	
	LORA_CODINGRATE	Coding rate: <ul style="list-style-type: none"> <li>1: 4/5</li> <li>2: 4/6</li> <li>3: 4/7</li> <li>4: 4/8</li> </ul>	
	LORA_PREAMBLE_LENGTH	Length of Tx/Rx preamble	
	LORA_SYMBOL_TIMEOUT	Number of symbols checked before timeout	
	LORA_FIX_LENGTH_PAYLOAD_ON	Fix/dynamic length payload option	
	LORA_IQ_INVERSION_ON	IQ inversion option	
FSK specific parameters	FSK_FDEV	Frequency deviation (in Hz)	
	FSK_DATARATE	Data rate (in bit/s)	
	FSK_BANDWIDTH	Bandwidth (in Hz)	
	FSK_PREAMBLE_LENGTH	Length of Tx/Rx preamble	
	FSK_FIX_LENGTH_PAYLOAD_ON	Fix/dynamic length payload option	
Debug	DEBUGGER_ENABLED	Enables SWD pins.	sys_conf.h
Low power	LOW_POWER_DISABLE	Disables low-power mode.	
Trace enable	APP_LOG_ENABLED	Enables the trace mode.	
Trace level	VERBOSE_LEVEL	Sets the trace level.	

1. Available only in FSK modulation.
2. Refer to document [8] for more details.

## 14 AT\_Slave applications

The purpose of these applications is to implement a SubGHz\_Phy modem controlled through the AT command interface over UART by an external host.

The external host can be a host microcontroller embedding the application and the AT driver, or simply a computer executing a terminal. The communication between STM32WL5x/Ex and the external host happens via AT commands over LPUART. For these applications, the STM32WL5x/Ex devices are always in Stop 2 mode unless it wakes up to process an AT command from the external host.

See [Table 2](#) for applicability.

Two applications are available:

- The SubGHz\_Phy\_AT\_Slave allows an external host (via AT commands) to run some RF test on STM32WL5x/Ex microcontrollers.
- The LoRaWAN\_AT\_Slave allows an external host (via AT commands) to drive the LoRaWAN stack over the built-in LoRa radio.

**Note:** *The LoRaWAN\_AT\_Slave can also be used to run the same RT test commands as the SubGHz\_Phy\_AT\_Slave. Therefore, the device must be reset before using again LoRaWAN stack AT commands.*

To launch the chosen AT\_Slave project, the user must go to

`\Projects\<target>\Applications\LoRaWAN\LoRaWAN_AT_Slave` or  
`\Projects\<target>\Applications\SubGHz_Phy\SubGHz_Phy_AT_Slave`, and follow the same procedure as for the LoRaWAN\_End\_Node project to launch the preferred toolchain. Select the project from the proper target board.

The table below summarizes all available AT commands for the selected application.

**Table 37. AT commands**

Commands	Description	LoRaWAN	SubGHz_PHY
<b>General commands</b>			
AT	Checks if the interface is available	Yes	
AT?	Helps all supported commands.	Yes	
ATZ	Resets.	Yes	
AT+VER	Gets the application/middleware versions.	Yes	
AT+VL	Gets the local time in UTC format.	Yes	
<b>LoRaWAN stack context management command</b>			
AT+RFS	Erases LoRaWAN context in flash memory and restore factory settings after a reset.	Yes	No
AT+CS	Stores the current LoRaWAN context to flash memory sector.	Yes	No
<b>LoRaWAN Keys, IDs, and EUIs management commands</b>			
AT+APPEUI	Sets/gets the application EUI.	Yes	No
AT+NWKEY	Sets/gets the network root key.	Yes	No
AT+APPKEY	Sets/gets the application root key.	Yes	No
AT+APPSKEY	Sets/gets the application session key.	Yes	No
AT+NWKEY	Sets/gets the network session key.	Yes	No
AT+DADDR	Sets/gets the device address.	Yes	No
AT+DEUI	Sets/gets the module unique ID.	Yes	No
AT+NWKID	Sets/gets the network ID.	Yes	No
<b>LoRaWAN join and send data commands</b>			
AT+JOIN	Joins the network.	Yes	No

Commands	Description	LoRaWAN	SubGHz_PHY
AT+LINKC	The Piggyback link checks the MAC command request to the next uplink.	Yes	No
AT+SEND	Sends packets to the network.	Yes	No
<b>LoRaWAN network management commands</b>			
AT+ADR	Sets/gets the adaptive data rate functionality.	Yes	No
AT+DR	Sets/gets the data rate.	Yes	No
AT+BAND	Sets/gets the active region.	Yes	No
AT+CLASS	Sets/gets the LoRa class.	Yes	No
AT+DCS	Sets/gets duty cycle settings.	Yes	No
AT+JN1DL	Sets/gets the join delay on Rx window 1.	Yes	No
AT+JN2DL	Sets/gets the join delay on Rx window 2.	Yes	No
AT+RX1DL	Sets/gets the delay of the Rx window 1.	Yes	No
AT+RX2DL	Sets/gets the delay of the Rx window 2.	Yes	No
AT+RX2DR	Sets/gets data rate of the Rx window 2.	Yes	No
AT+RX2FQ	Sets/gets the frequency of the Rx window 2.	Yes	No
AT+TXP	Sets/gets the transmit power.	Yes	No
AT+PGSLOT	Sets/gets the unicast ping slot periodicity.	Yes	No
<b>Radio tests commands</b>			
AT+TTONE	Sets the RF tone test.	Yes	
AT+TRSSI	Sets/gets the config LoRa RF test.	Yes	
AT+TTX	Sets the number of packets to be sent for PER RF Tx test.	Yes	
AT+TRX	Sets the number of packets to be received for PER RF Rx test.	Yes	
AT+TTH	Starts RF Tx hopping test from Fstart to Fstop (in Hz or MHz), Fdelta in Hz.	Yes	
AT+TOFF	Stops RF tests.	Yes	
<b>LoRaWAN certification command</b>			
AT+CERTIF	Sets the module in LoRaWAN certification with join mode.	Yes	No
<b>Information command</b>			
AT+BAT	Gets the battery level.	Yes	No

Refer to document [\[5\]](#) for details on AT commands and their description.

The table below summarizes the main options for the AT\_Slave applications configuration.

**Table 38. Switch options for AT\_Slave applications configuration**

Project module	Detail	Switch option	Definition	Location
LoRaWAN stack <sup>(1)</sup>	Unique device identification	LORAWAN_DEVICE_EUI	End-device IEEE Extended Unique Identifier (EUI)	se-identity.h
	Join EUI	LORAWAN_JOIN_EUI	Application or join server IEEE EUI (only used in OTAA)	
	End-device address	LORAWAN_DEVICE_ADDRESS	End-device address on the network (only used in ABP, generated by Network Server in OTAA)	
	App Root Key	LORAWAN_APP_KEY	Application root key used to derive application session keys	
	Nwk Root Key	LORAWAN_NWK_KEY	Network root key used to derive session keys at Join in OTAA	
	App Session Key	LORAWAN_APP_S_KEY	Application session key used to encrypt/decrypt payload with application server (only used in ABP, generated by root key in OTAA)	
	Nwk Session Key	LORAWAN_NWK_S_KEY	Network session key used to encrypt/decrypt payload with network server (only used in ABP, generated by root key in OTAA)	
	Supported regions	REGION_EU868	Regions supported by the device	lorawan_conf.h
		REGION_EU433		
		REGION_US915		
		REGION_AS923		
		REGION_AU915		
		REGION_CN470		
		REGION_CN779		
		REGION_IN865		
		REGION_RU864		
		REGION_KR920		
	AS923 channel plan	REGION_AS923_DEFAULT_CHANNEL_PLAN	Channel plan for region AS923	
	Limited channels	HYBRID_ENABLED	Limits the number of usable channels by default for AU915, CN470, and US915 regions.	
	Read keys	KEY_EXTRACTABLE	Defines the read access of the keys in the memory.	
	Optional class	LORAMAC_CLASSB_ENABLED	End-device Class B capability	
	Context management	CONTEXT_MANAGEMENT_ENABLED	Stores and restores the LoRaWAN stack context	
LoRaWAN application <sup>(1)</sup>	Adaptive data rate	LORAWAN_ADR_STATE	ADR selection	lora_app.h
	Default data rate	LORAWAN_DEFAULT_DATA_RATE	Data rate if ADR is disabled	
	Tx Power	LORAWAN_DEFAULT_TX_POWER	Default Tx output power at startup.	
	Ping period	LORAWAN_DEFAULT_PING	Rx ping slot period	

Project module	Detail	Switch option	Definition	Location
LoRaWAN application <sup>(1)</sup>		SLOT_PERIODICITY		lora_app.h
	Initial region	ACTIVE_REGION	Region used at device startup	
Global application	Debug	DEBUGGER_ENABLED	Enables SWD pins.	sys_conf.h
	Low power	LOW_POWER_DISABLE	Disables low-power mode.	
	Trace enable	APP_LOG_ENABLED	Enables the trace mode.	
	Trace level	VERBOSE_LEVEL	Sets the trace level.	

1. Available only in LoRaWAN\_AT\_Slave.

## 15 LoRaWAN context management description

The NVM context management is used to store the current LoRaWAN stack configuration in ROM before a power-off or a reset of the board.

The proposed solution is to store the `LoRaMacNvmData_t` structure of size 1484 bytes in a pre-allocated ROM page of 2 Kbytes.

This structure is defined as below:

**Table 39. LoRaWAN NVM context structure**

Field	Type	Size (bytes)	Description
Crypto	<code>LoRaMacCryptoNvmData_t</code>	40	Parameters related to the crypto layer. Change with every TX/RX.
MacGroup1	<code>LoRaMacNvmDataGroup1_t</code>	32	Parameters related to the MAC which changes with high probability after every TX/RX.
MacGroup2	<code>LoRaMacNvmDataGroup2_t</code>	260	Parameters related to the MAC which do not change very likely with every TX/RX.
SecureElement	<code>SecureElementNvmData_t</code>	216	Parameters related to the secure-element (Keys, Identifiers, etc.)
RegionGroup1	<code>RegionNvmDataGroup1_t</code>	20	Parameters related to the regional implementation which change with high probability after every TX/RX procedure .
RegionGroup2	<code>RegionNvmDataGroup2_t</code>	892	Parameters related to the regional implementation which do not change very likely with every TX/RX procedure.
ClassB	<code>LoRaMacClassBNvmData_t</code>	24	Parameters related to class b.

### 15.1 NVM context management data API definition

**Table 40. LoRaWAN context management API and callbacks**

Function	Description
<code>LmHandlerErrorStatus_t</code> <code>LmHandlerNvmDataStore (void)</code>	<ul style="list-style-type: none"> <li>Halts the LoRaMAC.</li> <li>Prepares the NVM data to be stored in FLASH.</li> <li>Calls the <code>OnStoreContextRequest()</code> callback to execute the FLASH_Write operation.</li> <li>Resumes the LoRaMAC.</li> </ul>
<code>void OnRestoreContextRequest (void *nvm, uint32_t nvm_size)</code>	Restores the NVM data stored in FLASH to a backup buffer in RAM.
<code>void OnStoreContextRequest (void *nvm, uint32_t nvm_size)</code>	Stores the NVM data from the RAM to the FLASH.
<code>void OnNvmDataChange (LmHandlerNvmContextStates_t state)</code>	Is called by LmHandler when a store or restore action is completed.

If callbacks are not defined, the feature is considered as disabled. The feature is enabled by the define described in [Section 10.2.12](#).

## 16 Dual-core management

The STM32WL5x devices embed two Cortex:

- Cortex-M4 (named CPU1)
- Cortex-M0+ (named CPU2)

In the dual-core applications, the application part mapped on CPU1 is separated from the stack and firmware low layers mapped on CPU2.

In a dual-core proposed model, two separated binaries are generated: CPU1 binary is placed at 0x0800 0000 and CPU2 binary is placed at 0x0802 0000.

A function address from one binary is not known from the other binary: this is why a communication model must be put in place. The aim of that model is that the user can change the application on CPU1 without impacting the core stack behavior on CPU2. However, ST still provides the implementation of the two CPUs in open source.

The interface between cores is done by the IPCC peripheral (interprocessor communication controller) and the inter-core memory, as described in [Section 16.1](#).

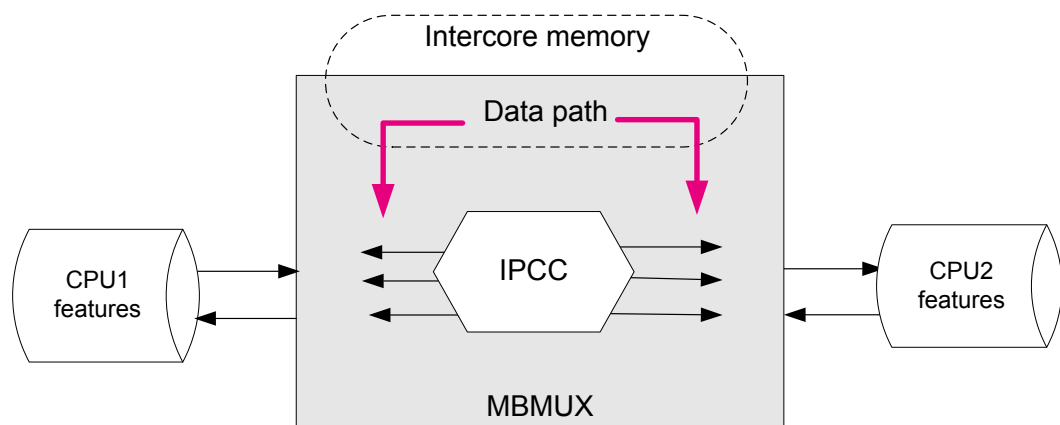
This dual-core implementation has been designed to behave the same way as the single-core program execution, thanks to a message blocking handling through a mailbox mechanism.

### 16.1 Mailbox mechanism

The mailbox is a service implementing a way to exchange data between the two processors. As shown in the figure below, the mailbox is built over two resources:

- **IPCC:** This hardware peripheral is used to trigger an interrupt to the remote CPU, and to receive an interrupt when it has completed the notification. The IPCC is highly configurable and each interrupt notification may be disabled/enabled. There is no memory management inside the IPCC.
- **Intercore memory:** This shared memory can be read/written by both CPUs. It is used to store all buffers that contain the data to be exchanged between the two CPUs.

**Figure 10. Mailbox overview**



The mailbox is specified to allow changes of the buffer definition to some extent, without breaking the backward compatibility.

#### 16.1.1 Mailbox multiplexer (MBMUX)

As described in [Figure 11](#), the data to be exchanged need to communicate via the 12 available IPCC channels (six for each direction). This is done via the MBMUX (mailbox multiplexer) that is a firmware component in charge to route the messages. These channels are identified from 1 to 6. An additional channel 0 is dedicated to the system feature.

The data type has been divided in groups called features. Each feature interfaces with the MBMUX via its own MBMUXIF (MBUX interface).

The mailbox is used to abstract a function executed by another core.

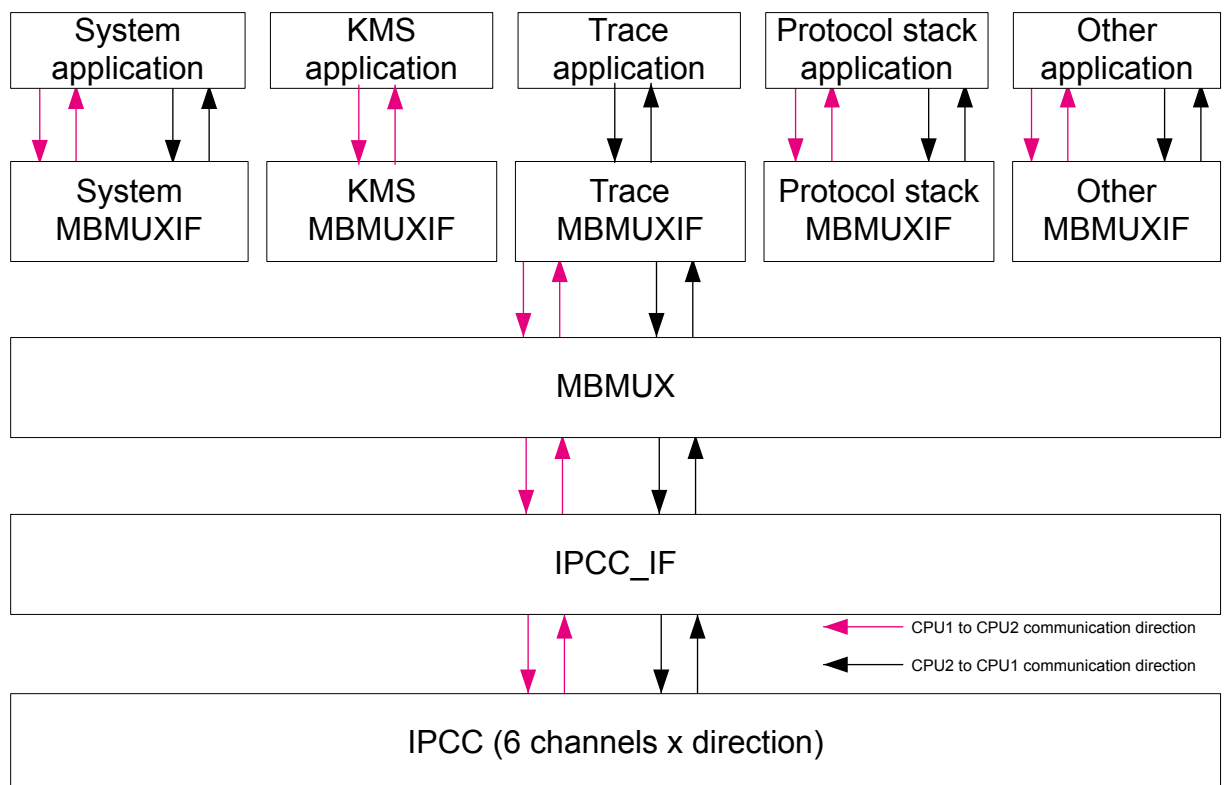
## 16.1.2

### Mailbox features

In STM32WL5x devices, the MBMUX has the following features:

- **System**, supporting all communications related to the system  
This includes messages that are either related to one of the supported stacks, or related to none of them. The CPU1 channel 0 is used to notify the CPU2 that a command has been posted, and to receive the response of that command from the CPU2. The CPU2 channel 0 is used to notify CPU1 that an asynchronous event has been posted.  
The following services are mapped on system channel:
  - system initialization
  - IPCC channels versus feature registration
  - information exchanged on feature attributes and capabilities
  - possible additional system channels for high-priority operations (such as RTC notifications)
- **Trace**  
The CPU2 fills a circular queue for information or debug that is sent to the CPU1 via the IPCC. The CPU1 is in charge to handle this information, by outputting it on the same channel used for CPU1 logs (such as the USART).
- **KMS** (key management services)
- **Radio**  
The sub-GHz radio can be interfaced directly without passing by the CPU2 stack. A dedicated mailbox channel is used.
- **Protocol stack**  
This channel is used to interface all protocol stack commands (such as Init or request), and events (response/indication) related to the stack implemented protocol.

**Figure 11. MBMUX - Multiplexer between features and IPCC channels**



In order to use the MBMUX, a feature needs to be registered (except the system feature that is registered by default and always mapped on IPCC channel 0). The registration dynamically assigns to the feature, the requested number of IPCC channels: typically one for each direction (CPU1 to CPU2 and CPU2 to CPU1).



In the following cases, the feature needs just a channel in one direction:

- Trace feature is only meant to send debug information from CPU2 to CPU1.
- KMS is only used by CPU1 to request functions execution to CPU2.

*Note:*

- The RTC alarm A transfers the interrupt using one IPCC IRQ, not considered as a feature.
- The user must consider adding KMS wrapper to be able to use it as a feature.

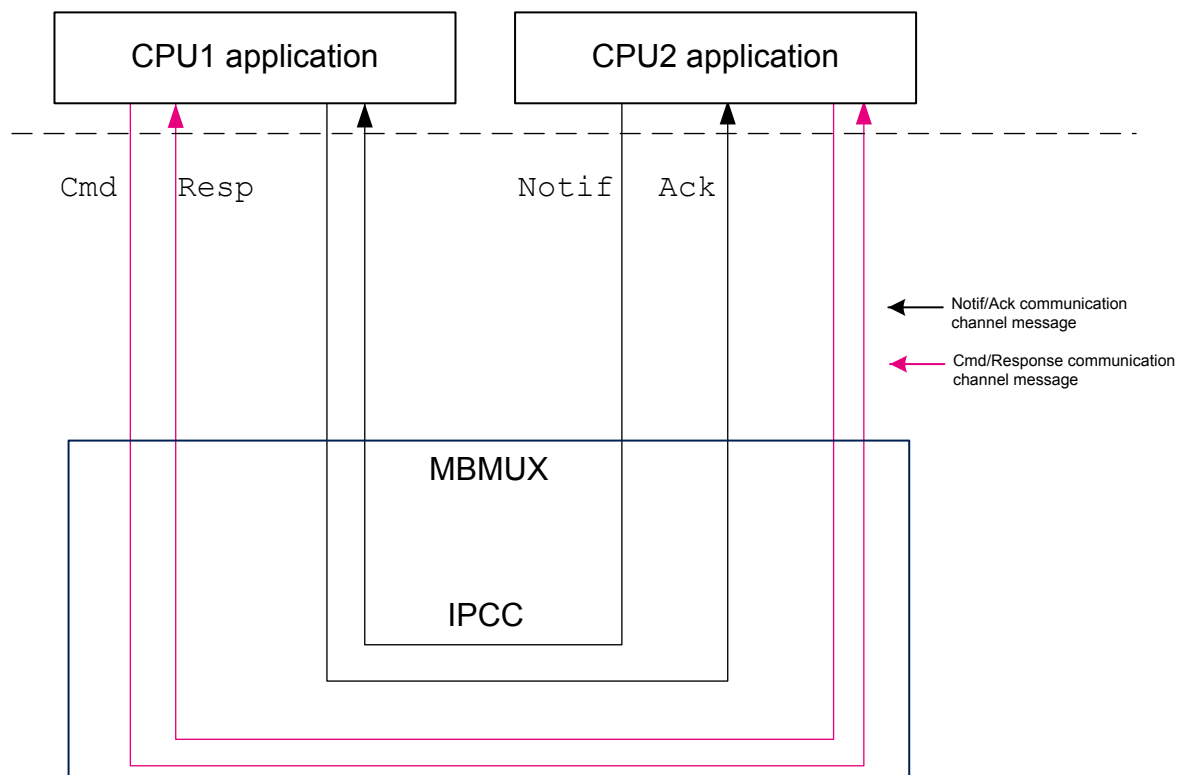
### 16.1.3

#### MBMUX messages

The mailbox uses the following types of messages:

- **Cmd**, command sent by CPU1 to CPU2, composed of:
  - `Msg ID` identifies a function called by CPU1 but implemented on CPU2.
  - `Ptr buffer params` points to the buffer containing the parameters of the above function
  - Number of params
- **Resp**, response sent by CPU2 to CPU1, composed of:
  - `Msg ID` (same value as `Cmd Msg ID`)
  - `Return value` contains the return value of the above function.
- **Notif**, notification sent by CPU2 to CPU1, composed of:
  - `Msg ID` identifies a callback function called by CPU2 but implemented on CPU1.
  - `Ptr buffer params` points to the buffer containing the parameters of the above function.
  - Number of params
- **Ack**, acknowledge sent by CPU1 to CPU2, composed of:
  - `Msg ID` (same value as `Notif Msg ID`)
  - `Return value` contains the return value of the above callback function.

**Figure 12. Mailbox messages through MBMUX and IPCC channels**



## 16.2 Intercore memory

The intercore memory is a centralized memory accessible by both cores, and used by the cores to exchange data, function parameters, and return values.

### 16.2.1 CPU2 capabilities

Several CPU2 capabilities must be known by the CPU1 to detail its supported features (such as protocol stack implemented on the CPU2, version number of each stack, or regions supported).

These CPU2 capabilities are stored in the *features\_info* table. Data from this table are requested at initialization by the CPU1 to expose CPU2 capabilities, as shown in RAM mapping.

The *features\_info* table is composed of:

- Feat\_Info\_Feature\_Id: feature name
- Feat\_Info\_Feature\_Version: feature version number used in current implementation

MB\_MEM2 is used to store these CPU2 capabilities.

### 16.2.2 Mailbox sequence to execute a CPU2 function from a CPU1 call

When the CPU1 needs to call a CPU2 *feature\_func\_X()*, a *feature\_func\_X()* with the same API must be implemented on the CPU1:

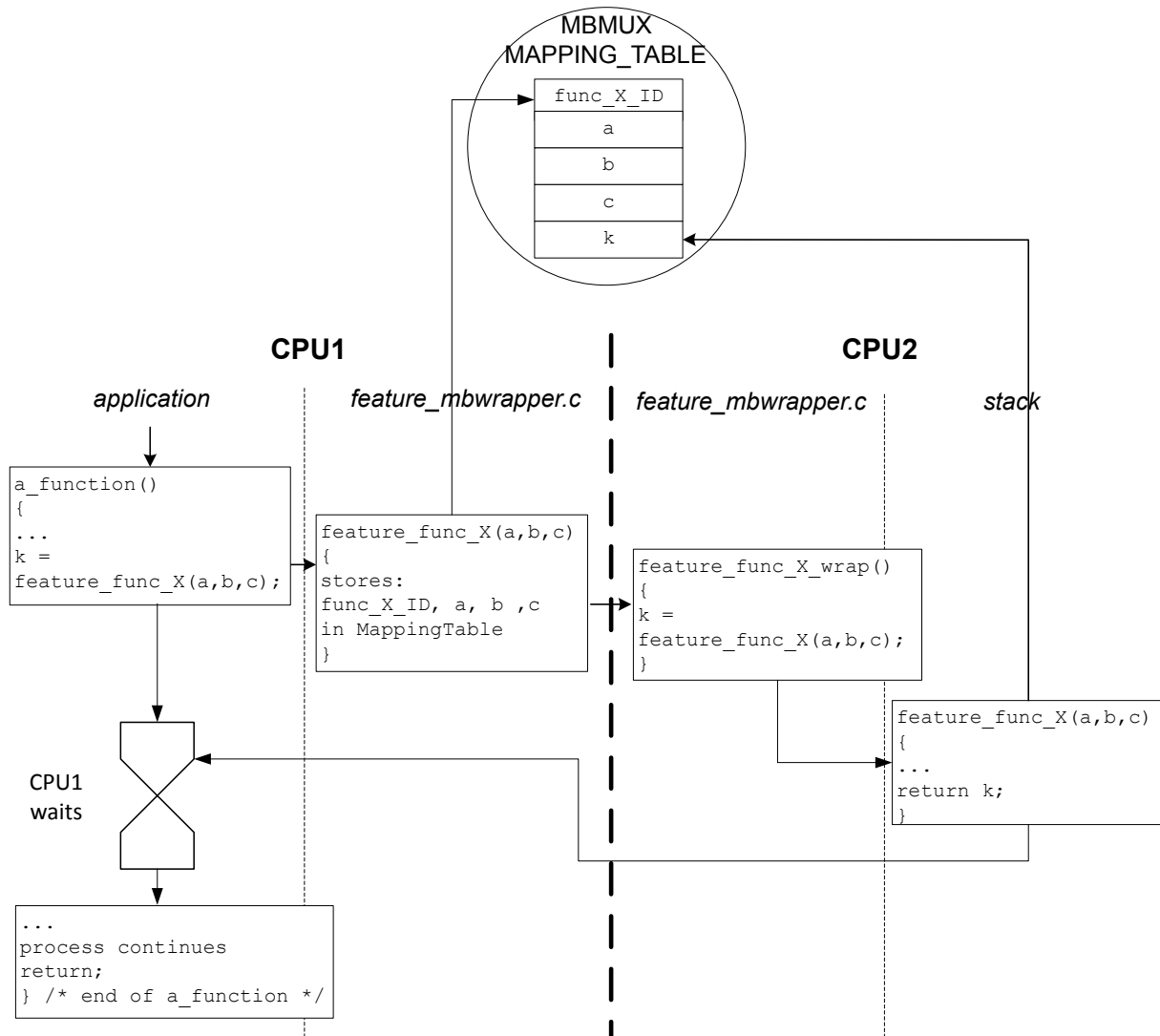
1. The CPU1 sends a **command** containing *feature\_func\_X()* parameters in the *Mapping* table:
  - a. *func\_X\_ID* that was associated to *feature\_func\_X()* at initialization during registration, is added in the *Mapping* table. *func\_X\_ID* has to be known by both cores: this is fixed at compilation time.
  - b. The CPU1 waits the CPU2 to execute the *feature\_func\_X()* and goes in low-power mode.
  - c. The CPU2 wakes up if it was in low-power mode and executes the *feature\_func\_X()*.
2. The CPU2 sends a **response** and fills the *Mapping* table with the return value:
  - a. The IPCC interrupt wakes up the CPU1.
  - b. The CPU1 retrieves the return value from the *Mapping* table.

Conversely, when the CPU2 needs to call a CPU1 *feature\_func\_X\_2()*, a *feature\_func\_X\_2()* with the same API must be implemented on the CPU2:

1. The CPU2 sends a **notification** containing *feature\_func\_X\_2()* in the *Mapping* table.
2. The CPU1 sends an **acknowledge** and fills the *Mapping* table with the return value.

The full sequence is shown in the figure below.

**Figure 13. CPU1 to CPU2 feature\_func\_X() process**

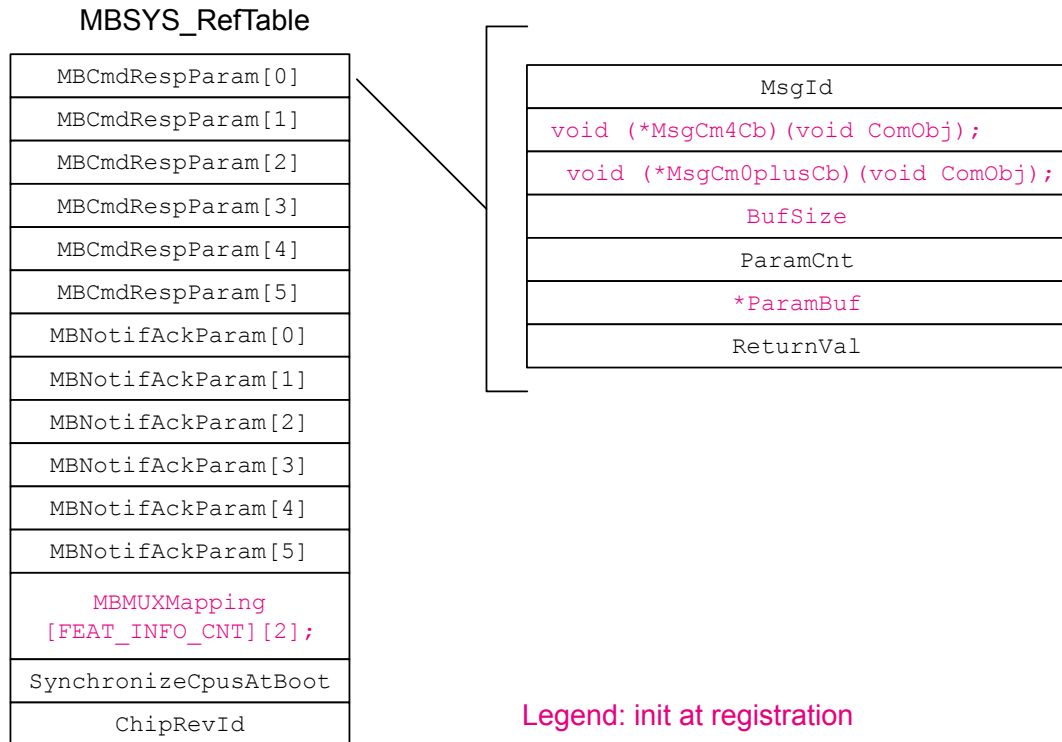


### 16.2.3 Mapping table

The *Mapping* table is a common structure in the MBMUX area of Figure 13. In RAM mapping, the memory mapping is referenced as MAPPING\_TABLE.

The MBMUX communication table (MBSYS\_RefTable) is described in the figure below.

Figure 14. MBMUX communication table



This MBSYS\_RefTable includes:

- two communication parameter structures for both Command/Response and Notification/Acknowledge parameters for each of the six IPCC channels.  
Each communication parameter, as shown in MBMUX Mapping table area of Figure 13, is composed of:
  - MsgId: message ID of feature\_func\_X()
  - \*MsgCm4Cb: pointer to CPU1 callback feature\_func\_X()
  - \*MsgCm0plusCb: pointer to CPU2 callback feature\_func\_X()
  - BufSize: buffer size
  - ParamCnt: message parameter number
  - ParamBuf: message pointer to parameters
  - ReturnVal: return value of feature\_func\_X()
- MBMUXMapping: chart used to map channels to features  
This chart is filled at the MBMUX initialization during the registration. For instance, if the radio feature is associated to Cmd/Response channel number = 1, then MBMUXMapping must associate [FEAT\_INFO\_RADIO\_ID][1] .
- SynchronizeCpusAtBoot: flags used to synchronize CPU1 and CPU2 processing as shown in Figure 15 sequence chart.
- ChipRevId: stores the hardware revision ID.

MB\_MEM1 is used to send command/response set () parameter and to get the return values for the CPU1.

### 16.2.4 Option-byte warning

A trap is placed in the code to avoid erroneous option-byte loading (see section *Option-byte loading failure at high MSI system clock frequency* in the product errata sheet ). The trap can be removed if the system clock is set below or equal to 16 MHz.

### 16.2.5 RAM mapping

The tables below detail the mapping of both CPU1 and CPU2 RAM areas and the intercore memory.

**Table 41. STM32WL5x RAM mapping**

Allocation region/ section	Page index  (1)
CPU1 RAM	1
	2
	3
	4
	5
	6
	7
	8
	9
	10
	11
	12
	13
	14
	15
	16
CPU1 RAM2_Shared	17
CPU2 RAM2_Shared	18
	19
CPU2 RAM2	20
	21
	22
	23
	24
	25
	26
	27
	28
	29
	30
	31
	32

1. 2 Kbytes for each page.

**Table 42. STM32WL5x RAM allocation and shared buffer**

CPU region	Section	Module	Allocated symbol	Size (bytes)	Total (bytes)
CPU1 RAM	readwrite	-			
	CSTACK				
	HEAP				
CPU1 RAM2 _Shared	MAPPING _TABLE	MBMUX_SYSTEM	MBMUX_ComTable_t MBSYS_RefTable	316	316
	MB_MEM1	MBMUX_LORAWAN	uint32_t aLoraCmdRespBuff[]	60	524
			uint32_t aLoraNotifAckBuff[]	20	
		MBMUX_RADIO	uint32_t aRadioCmdRespBuff[]	60	
			uint32_t aRadioNotifAckBuff[]	16	
		MBMUX_TRACE	uint32_t aTraceNotifAckBuff[]	44	
		MBMUX_SYSTEM	uint32_t aSystemCmdRespBuff[]	28	
			uint32_t aSystemNotifAckBuff[]	20	
			uint32_t aSystemPrioACmdRespBuff[]	4	
			uint32_t aSystemPrioANotifAckBuff[]	4	
			uint32_t aSystemPrioBCmdRespBuff[]	4	
			uint32_t aSystemPrioBNotifAckBuff[]	4	
		LMH_MBWRAPPER	uint8_t aLoraMbWrapShareBuffer[]	260	
CPU2 RAM2 _Shared	MB_MEM2	MBMUX_LORAWAN	FEAT_INFO_Param_t Feat_Info_Table	80	88
		MBMUX_LORAWAN	FEAT_INFO_List_t Feat_Info_List	8	
	MB_MEM3 <sup>(1)</sup>	MBMUX_TRACE	uint8_t ADV_TRACE_Buffer[]	1024	1608

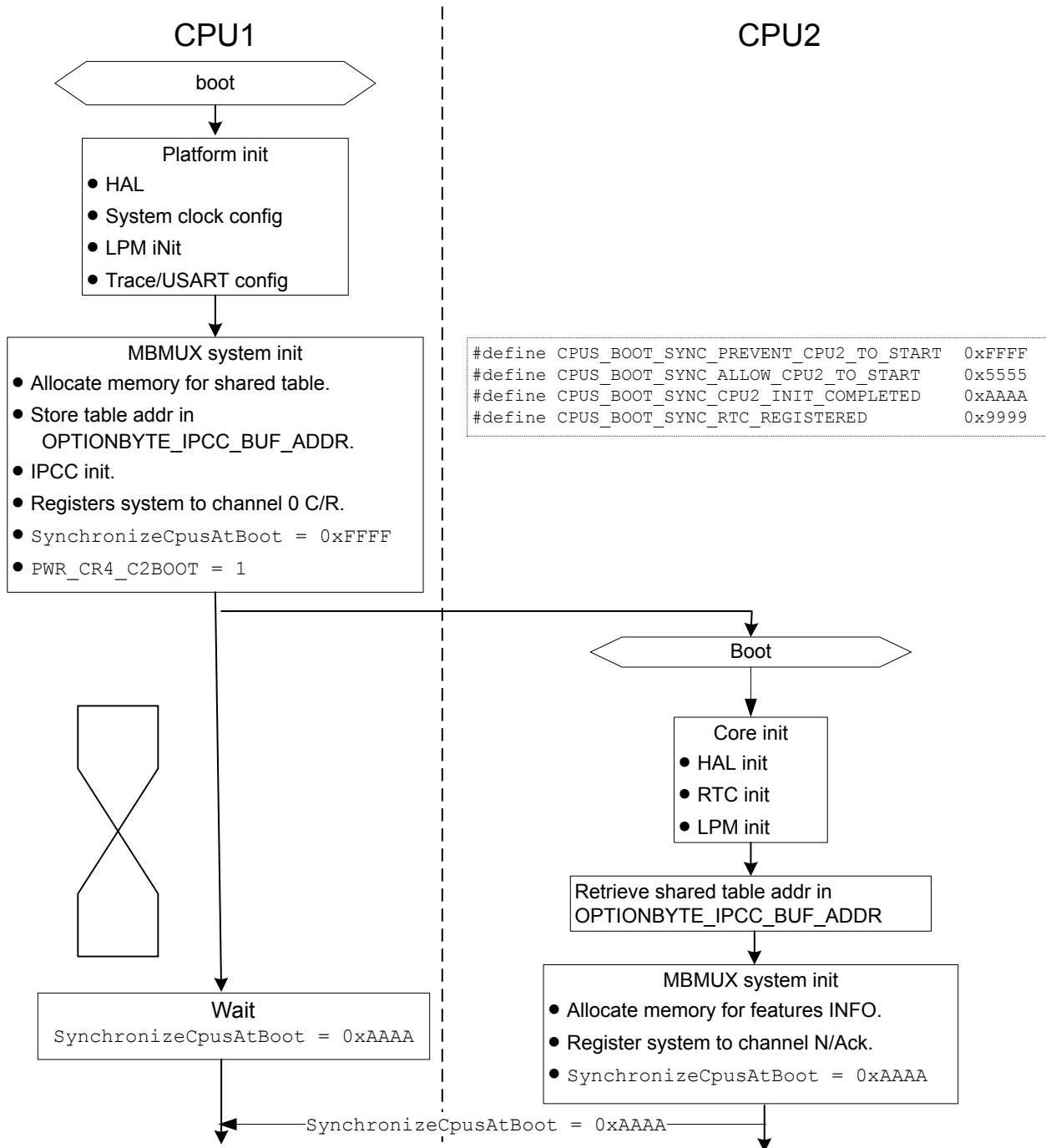
CPU region	Section	Module	Allocated symbol	Size (bytes)	Total (bytes)
CPU2 RAM2 _Shared	MB_MEM3 <sup>(1)</sup>	MBMUX_LORAWAN	LoraInfo_t loraInfo	16	1608
		LMH_MBWRAPPER	uint8_t aLoraMbWrapShare2Buffer[]	312	
		RADIO_MBWRAPPER	uint8_t aRadioMbWrapRxBuffer[]	256	
CPU2 RAM2	readwrite	-			
	CSTACK				
	HEAP				

1. This new section prevents overcharge of Flash usage to init these BSS RAM variables with STM32CubeIDE.

## 16.3 Startup sequence

The startup sequence for CPU1 and CPU2 is detailed in the figure below.

Figure 15. Startup sequence

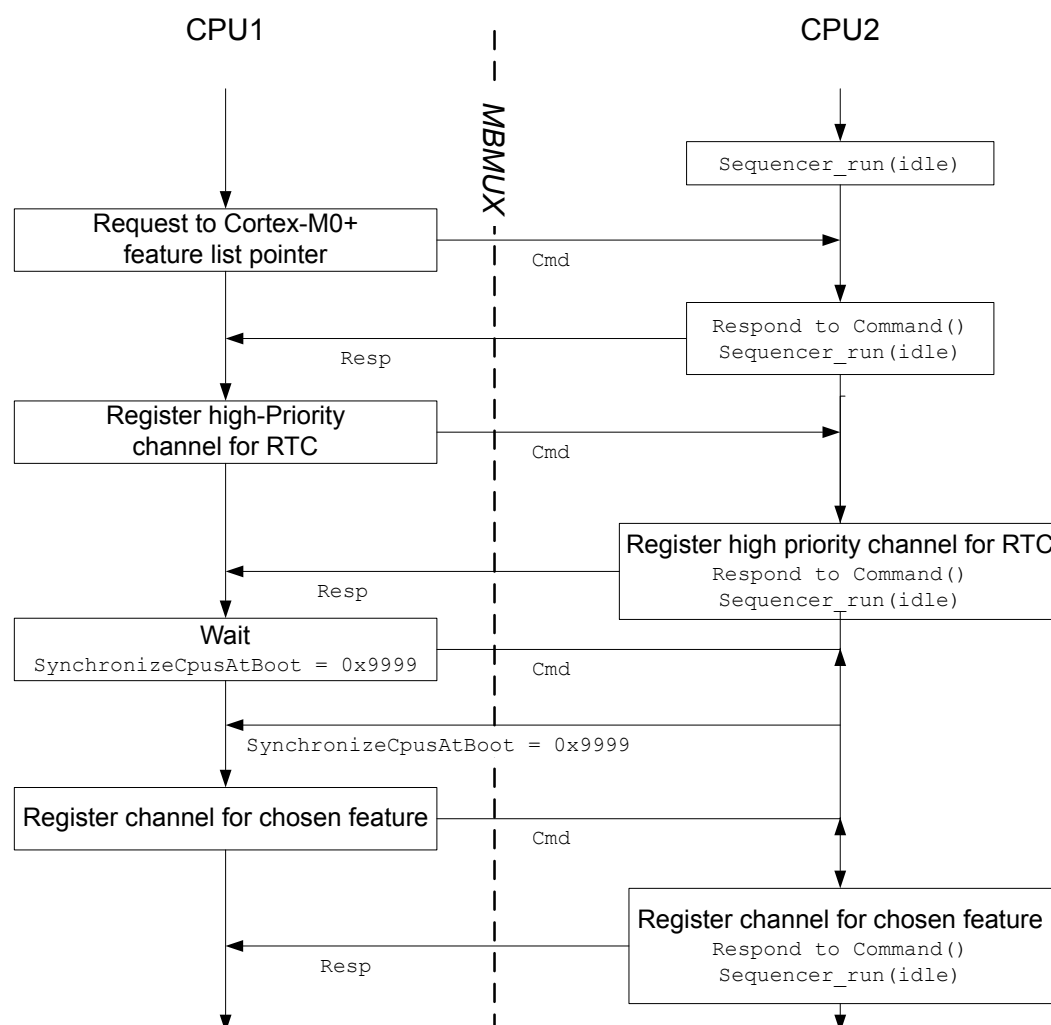


The various steps are the following:

1. The CPU1, that is the master processor in this init sequence:
  - a. executes the platform initialization.
  - b. initializes the MBMUX system.
  - c. sets the `PWR_CR4_C2BOOT` flag to 1, which starts the CPU2.
  - d. waits that CPU2 sets the `SynchronizeCpusAtBoot` flag to 0xAAAA.
2. The CPU2 boots and:
  - a. executes the core initialization.
  - b. retrieves the shared table address.
  - c. initializes the MBMUX system.
  - d. sets the `SynchronizeCpusAtBoot` to 0xAAAA to inform the CPU1 that he has ended its init sequence and that he is ready.
3. The CPU1 acknowledges this CPU2 notification.

Then both cores are initialized, and the initialization goes on via MBMUX, as shown in the figure below.

**Figure 16. MBMUX initialization**



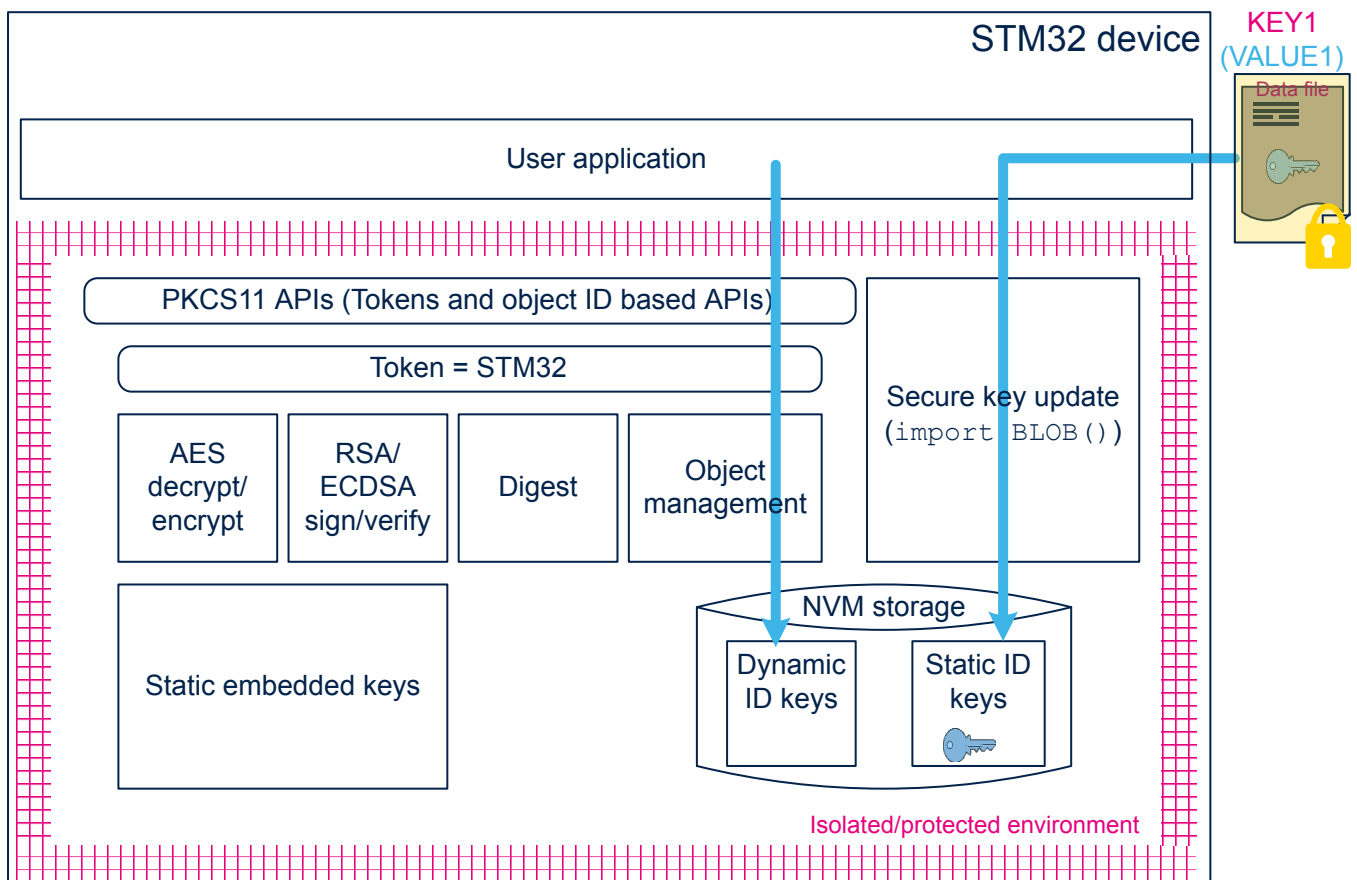


## 17 Key management services (KMS)

Key management services (KMS) provide cryptographic services through the standard PKCS#11 APIs (developed by OASIS), are used to abstract the key value to the caller (using object ID and not directly the key value).

KMS can be executed inside a protected/isolated environment in order to ensure that key value cannot be accessed by an unauthorized code running outside the protected/isolated environment, as shown in the figure below.

Figure 17. KMS overall architecture



For more details, refer to KMS section in the user manual *Getting Started with the SBSFU of STM32CubeWL* (UM2767) .

To activate the KMS module, `KMS_ENABLE` must be set to 1 in C/C++ compiler project options.

KMS supports only PKCS #11 APIs listed below:

- Object management functions (creation/update/deletion)
- AES encryption/decryption functions (CBC, CCM, ECB, GCM, CMAC algorithms)
- Digesting functions
- RSA and ECDSA signing/verifying functions
- Key management functions ( key generation/derivation)

## 17.1 KMS key types

KMS manages three key types but only the two following ones are used:

- Static embedded keys
  - predefined keys embedded within the code that cannot be modified
  - immutable keys
- NVM\_DYNAMIC keys:
  - runtime keys
  - keys IDs that may be defined when keys are created using KMS ( `DeriveKey()` or `CreateObject()` )
  - keys that can be deleted or defined as mutable

## 17.2 KMS key definition

Static and dynamic keys used by stack occupies different sizes.

### Static key

Each static key is composed of the two following elements:

- a blob header: five 4-byte fields (total = 20 bytes): `version`, `configuration`, `blob_size`, `blob_count`, and `object_id`.
- a blob buffer: some required and option blob elements, from the list of elements defined as follows:

**Table 43. Global KMS blob elements**

Attribute	Value	Required	Size (bytes)	Description
CKA_CLASS	CKO_SECRET_KEY	Yes	12	Type of blob element
CKA_KEY_TYPE	CKK_AES	Yes	12	Type of key
CKA_VALUE	"KEY_VALUE"	Yes	24	Key value (uint32_t format)
CKA_DERIVE	TRUE/FALSE	No	12	Optional parameters to enable/disable capabilities by default. These fields are TRUE if not defined.
CKA_ENCRYPT	TRUE/FALSE	No	12	
CKA_DECRYPT	TRUE/FALSE	No	12	
CKA_COPYABLE	TRUE/FALSE	No	12	
CKA_EXTRACTABLE	TRUE/FALSE	No	12	
CKA_LABEL	"UNIQUE_LABEL"	Yes	12 for static key 16 for dynamic key	Unique label

Example:

A static key composed of a blob header and eight blob elements (CKA\_CLASS, CKA\_KEY\_TYPE, CKA\_VALUE, CKA\_LABEL, CKA\_DERIVE, CKA\_DECRYPT, CKA\_COPYABLE, and CKA\_EXTRACTABLE), uses a total size of 128 bytes (blob header = 20 bytes, and blob buffer =  $(12 \times 7 + 24) = 108$  bytes).

### Dynamic key

Each dynamic key is composed of three elements, a data header, a blob header, and a blob buffer, with:

- a data header: eight 4-byte fields (total = 32 bytes): `magic1`, `magic2`, `slot`, `instance`, `next`, `data_type`, `size`, and `checksum`.

Example:

A dynamic key composed of a data header, a blob header and five blob elements (CKA\_CLASS, CKA\_KEY\_TYPE, CKA\_VALUE, CKA\_LABEL, and CKA\_EXTRACTABLE) uses a total size of 128 bytes (data header = 32 bytes, blob header = 20 bytes, and blob buffer =  $(12 + 12 + 24 + 12 + 16) = 76$  bytes).

- Note:**
- The NVM dynamic memory always starts with an initial data header element.
  - At each dynamic key 'deletion' (such as an obsolete key replaced by a new key value), an additional data header is written in the memory to declare that the previous instance cannot longer be used.

### 17.3 LoRaWAN keys

In STM32CubeWL applications, the KMS are used on CPU2 only on dual-core application. The root keys are chosen to be static embedded keys. All derived keys are NVM\_DYNAMIC keys.

For LoRaWAN stack, the immutable root keys are detailed in the table below.

**Table 44. LoRaWAN static keys with blob attributes**

Attribute	Key				
	LoRaWAN_Zero_Key	LoRaWAN_APP_Key	LoRaWAN_NWK_Key	LoRaWAN_NWK_S_Key (ABP only)	LoRaWAN_APP_S_Key (ABP only)
CKA_CLASS	CKO_SECRET_KEY				
KA_KEY_TYPE	CKK_AES				
CKA_VALUE	"KEY_VALUE"				
CKA_DERIVE	FALSE	TRUE	TRUE	TRUE	TRUE
CKA_ENCRYPT	TRUE	FALSE	FALSE	TRUE	TRUE
CKA_DECRYPT	FALSE	FALSE	FALSE	TRUE	TRUE
CKA_COPYABLE	FALSE				
CKA_EXTRACTABLE	FALSE	TRUE/FALSE defined by #define KEY_EXTRACTABLE			
CKA_LABEL	"UNIQUE LABEL"				

All other keys are mutable NVM\_DYNAMIC generated keys, detailed in the table below.

**Table 45. LoRaWAN dynamic keys with blob attributes**

Attribute	Key							
	LoRaWAN_NWK_S_Key (OTAA only)	LoRaWAN_APP_S_Key (OTAA only)	MC_ROOT_Key	MC_KE_Key	MC_KEY_0	MC_APP_S_Key_0	MC_NWK_S_Key_0	SLOT_RANDOM_ZERO_Key
CKA_CLASS	CKO_SECRET_KEY							
KA_KEY_TYPE	CKK_AES							
CKA_VALUE	"KEY_VALUE"							
CKA_DERIVE	TRUE							
CKA_ENCRYPT	TRUE							
CKA_DECRYPT	TRUE							
CKA_COPYABLE	TRUE							
CKA_EXTRACTABLE	TRUE/FALSE defined by #define KEY_EXTRACTABLE							
CKA_LABEL	"UNIQUE LABEL"							

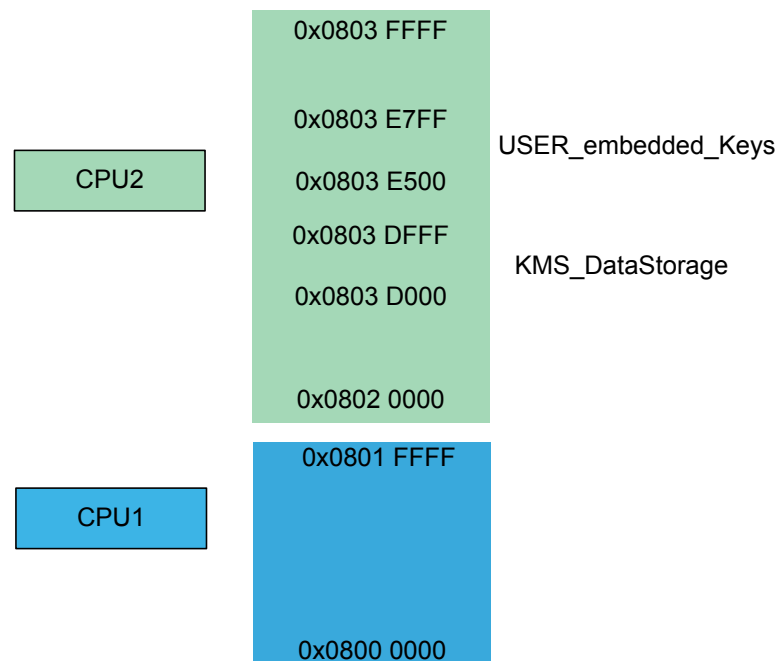
## 17.4 KMS key memory mapping for user applications

Static embedded keys correspond to `USER_embedded_Keys` (used for root keys). They are placed in a dedicated data storage in flash memory/ROM. The linker files for user applications locate them from 0x0803 E500 to 0x0803 E7FF, as shown in the figure below.

NVM\_DYNAMIC keys are placed in KMS key data storage area, `KMS_DataStorage`.

The total data storage area must be 4 Kbytes, as explained in [Section 17.5](#). They have been placed from: 0x0803 D000 to 0x0803 DFFF, as shown in the figure below. This size may be increased if more keys are necessary.

Figure 18. ROM memory mapping



## 17.5 How to size NVM for KMS data storage

The NVM is organized by 2-Kbyte pages. Due to the double buffering (flip/flop EEPROM emulation mechanism), each page needs a “twin”. So the minimum to be allocated for NVM is 4 Kbytes. The allocation size is defined in the linker file.

The linker files proposed by the applications use the minimum allowed size (2 × 2 Kbytes). The associated limitations/drawbacks are explained below. The user must size NVM depending on the application specific need.

The applications use the NVM only to store the dynamic keys. A LoRaWAN dynamic key with a data header, a blob header, and a blob buffer of five elements, occupies 108 bytes. An empty NVM is initialized with a global 32-byte data header and, for each obsolete key, an additional 32-byte data header is written to declare the previous instance as unusable.

Given the above values, it is possible to evaluate how many keys can be stored in 2 Kbytes:

$(2048 - 32) / (108 + 32) = 14.4 \Rightarrow 14$  dynamic keys can be stored into a 2-Kbyte memory page before the flop operation.

In user application configuration, only `NVM_DYNAMIC` is used. `NVM_STATIC` can be filled via blob, but is not covered by user applications.

`NVM_DYNAMIC` can host derived keys (via `C_DeriveKey()`) and root keys (via `C_CreateObject()`).

The LoRaWAN application generates:

- two derived keys each join in ABP mode
- four derived keys each join in OTAA mode

Up to ten derived keys simultaneously active can be generated in more complex scenarios (such as setting multicast). If a user wants to write one application that uses more than 14 keys, additional NVM pages must be allocated to the linker file.

Smaller is the NVM size, more the NVM is written and erased, shorter becomes its life expectation.

Destroy a key does not mean that this key is erased, but that this key is tagged as destroyed and is not copied at the next flip-flop switch. A destroy flag also occupies some NVM bytes: after destroying eight keys, the remaining place is less than four keys.

For a scenario where four keys are generated each join, and after having destroyed the previous join key, the life expectation is estimated as follows:

- At the 3<sup>rd</sup> join session, four new keys are derived but no place in page 1 for the last key. All four keys (being still active) are placed in page 2. Page 1 is erased at once as the NVM page can only be fully erased.
- At the 5<sup>th</sup> join also, page 2 is erased and keys are stored back on page 1. After 40.000 joins, the two NVM pages have been erased 10.000 times, that is the estimated lifetime of the Flash sector.
- If the user application is supposed to join excessively frequently (for example every 2 hours), the expected NVM live is 80.000 hours (around nine years). If the join process is done once a day, the lifetime is much greater than ten years.

Bigger are the amount of requested derived keys simultaneously active (not destroyed), less efficient is the flip-flop mechanism.

To conclude, for applications that need to preserve the NVM life-time duration, it is suggested to keep the NVM size rather bigger than the number of keys active simultaneously (not destroyed).

*Note: Obsolete keys must be destroyed otherwise, if page 1 is fully filled by active keys, the flip-flop switch cannot be done and an error is generated.*

## 17.6 KMS configuration files to build the application

The KMS are used in the LoRaWAN application by setting the code

```
#define LORAWAN_KMS 1
```

in CM0PLUS/LoRaWAN/Target/lorawan\_conf.h

The following files must be filled with the information on SubGHz\_Phy stack keys:

- embedded keys structures defined in CM0PLUS/Core/Inc/kms\_platf\_objects\_config.h
- embedded object handles associated to SubGHz\_Phy stack keys, use of KMS modules defined in CM0PLUS/Core/Inc/kms\_platf\_objects\_interface.h

## 17.7 Embedded keys

The embedded keys of the SubGHz\_Phy protocol stack must be stored in a ROM region in which a secure additional software (such as SBSFU, Secure Boot and Firmware Update) ensures data confidentiality and integrity. For more details on the SBSFU, refer to the application note *Integration guide of SBSFU on STM32CubeWL* (AN5544).

These embedded keys are positioned in the ROM as indicated in [Figure 18](#).

## 18 How to secure a LoRaWAN application

---

The document [\[10\]](#) describes how to secure a dual-core LoRaWAN application using the SBSFU framework.

## 19 System performances

### 19.1 Memory footprint

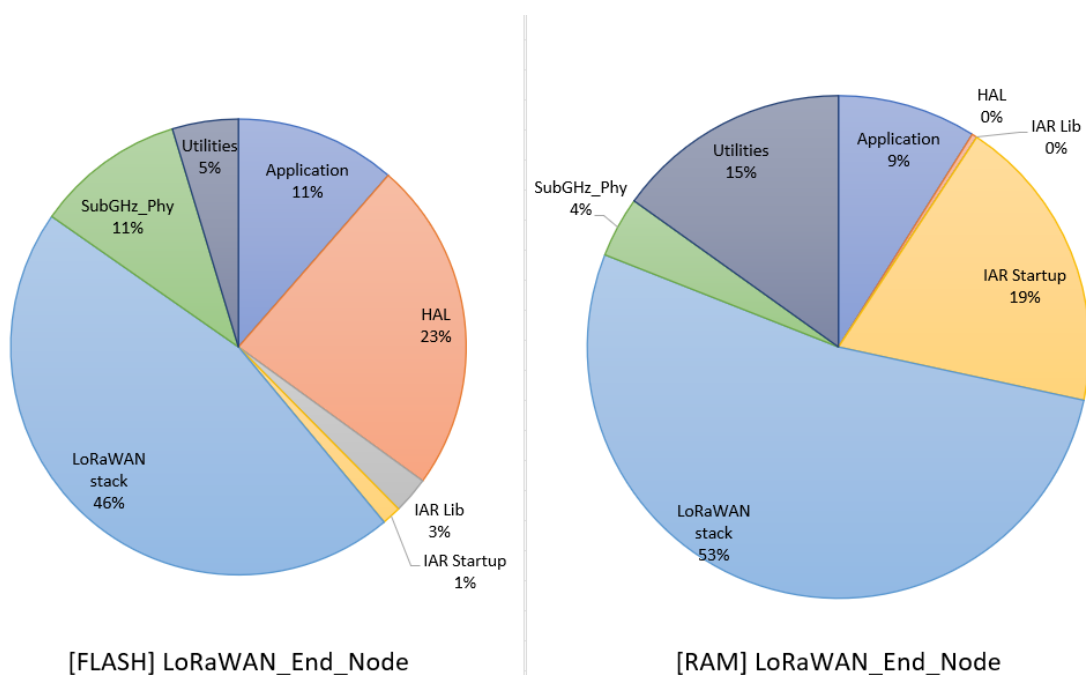
Values in the table below are measured in the following configuration of the IAR Embedded Workbench® compiler (EWARM version 9.20.1):

- optimization level 3 for size
- debug option off
- trace option: VLEVEL\_M (debug traces enabled)
- target : NUCLEO-WL55JC1
- LoRaWAN\_End\_Node application
- LoRaMAC Class A
- LoRaMAC region EU868 and US915

**Table 46. Memory footprint values for LoRaWAN\_End\_Node application**

Project module	Flash memory (bytes)	RAM (bytes)	Description
Application	7189	958	Core, Application and Target components
LoRaWAN stack	28789	5630	Middleware Lmhandler interface, crypto, MAC and Region
HAL	14831	36	STM32WL HAL and LL drivers
Utilities	2947	1620	All STM32 services (sequencer, time server, low-power manager, trace, mem)
SubGHz_Phy	6676	417	Middleware radio interface
IAR lib	1630	0	Proprietary IAR libraries
IAR startup	858	2048	Int_vect, init routines, init table, CSTACK and HEAP
Total application	62920	10709	Memory footprint for LoRaWAN_End_Node application

**Figure 19. Flash memory and RAM footprint**



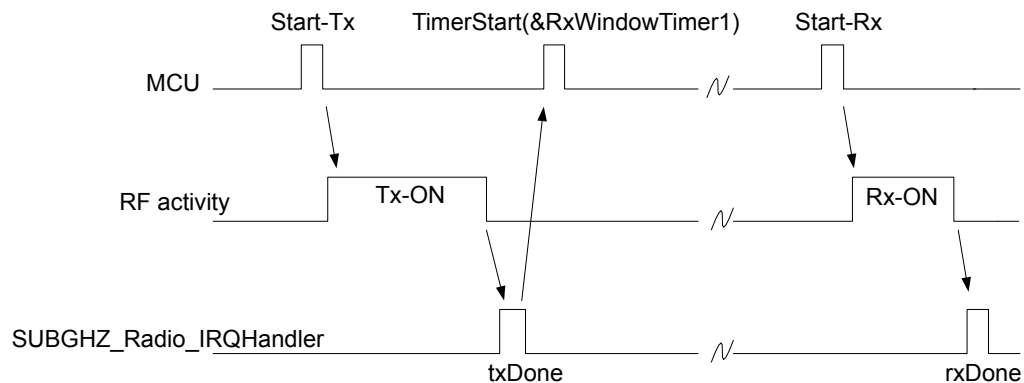
DT64334V1

## 19.2 Real-time constraints

The LoRa RF asynchronous protocol implies to follow a strict Tx/Rx timing recommendation (see the figure below).

The STM32WL Nucleo board (NUCLEO-WL55JC) is optimized for user-transparent low-lock time and fast auto-calibrating operation. The BSP integrates the transmitter startup time and the receiver startup time constraints (see [Section 4](#)).

**Figure 20. Rx/Tx time diagram**



Rx window channel starts. The Rx1 window opens 1 second ( $\pm 20 \mu\text{s}$ ) after the txDone falling edge. The Rx2 window opens 1 second ( $\pm 20 \mu\text{s}$ ) after the txDone falling edge.

The JOIN\_ACCEPT uses a 5 seconds ( $\pm 20 \mu\text{s}$ ) and 6 seconds delay after the end of the uplink modulation.

The current scheduling interrupt-level priority must be respected. In other words, all the new user-interrupts must have an interrupt priority higher than the Radio IRQ\_interrupt in order to avoid stalling the received startup time.

## 19.3 Power consumption

The power-consumption measurement is done for the STM32WL Nucleo board NUCLEO-WL55JC1.

Measurements setup:

- no debug
- trace level VLEVEL\_OFF (no trace)
- no SENSOR\_ENABLED

Measurements results:

- Typical consumption in Stop 2 mode =  $2 \mu\text{A}$  (see [Figure 22](#)).
- Typical consumption with TCXO in Tx =  $23 \text{ mA}$  (see [Figure 21](#)).
- Typical consumption with TCXO in Rx =  $7 \text{ mA}$  (see [Figure 21](#)).

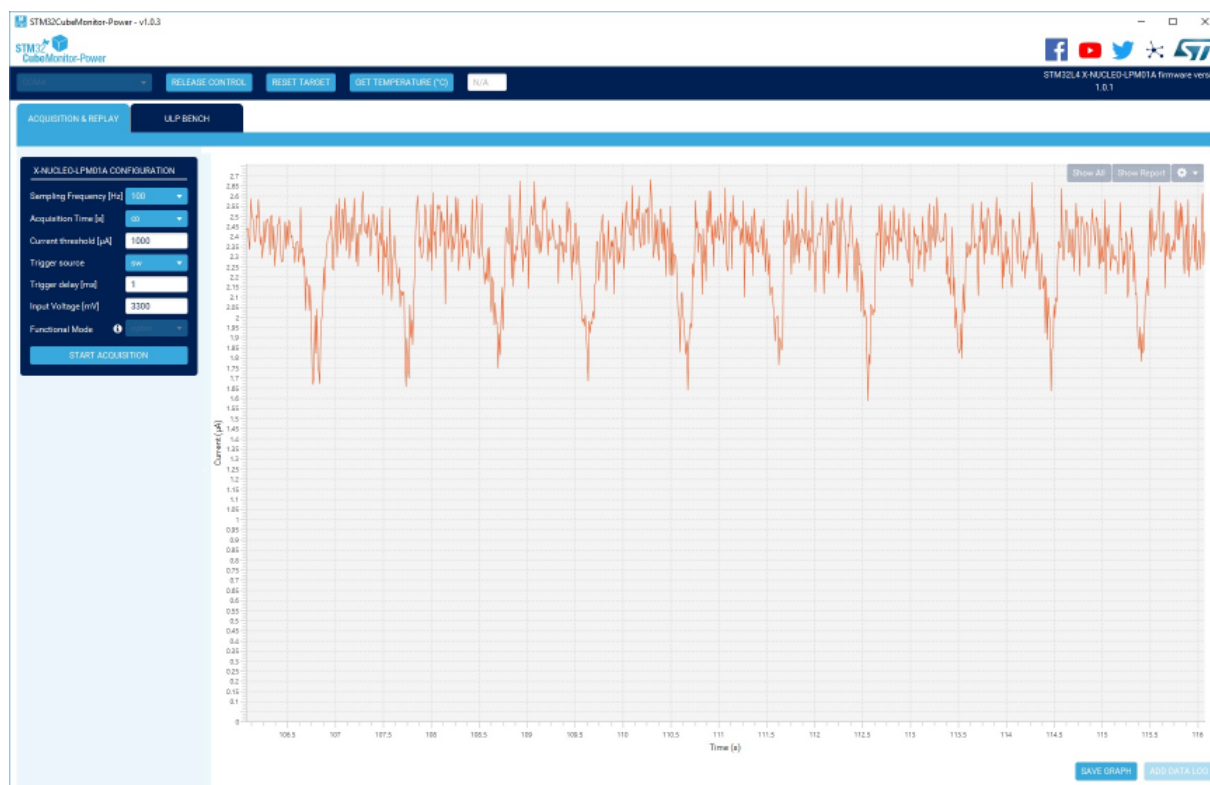


Measurements figures: instantaneous consumption over 30 seconds.

**Figure 21. NUCLEO-WL55JC1 current consumption versus time**



**Figure 22. NUCLEO-WL55JC1 current consumption in Stop 2 mode**



## Revision history

**Table 47. Document revision history**

Date	Version	Changes
10-Dec-2019	1	Initial release.
27-Apr-2020	2	Global update of the document structure and content.
17-Nov-2020	3	<p>Updated:</p> <ul style="list-style-type: none"> <li>Figure 1. Project file structure</li> <li>Note in Section 4 BSP STM32WL Nucleo-73 boards</li> <li>Intro of Section 6 LoRaWAN middleware description</li> <li>Title and intro of Section 6.6 Middleware LmHandler application function</li> <li>Table 22 and Table 23</li> <li>Section 8.1.1 Activation methods and keys</li> <li>Table 38. Switch options for End_Node application configuration</li> <li>Table 39. Switch options for AT_Slave application configuration</li> <li>Table 40. Switch options for PingPong application configuration</li> <li>Section 13.1 Memory footprint</li> </ul> <p>Added:</p> <ul style="list-style-type: none"> <li>Table 26. LmHandler process</li> <li>Section 11 Dual-core management</li> <li>Section 12 Key management services (KMS)</li> </ul> <p>Removed tables "Board unique ID" and "Board random seed" from Section 6.7.</p>
18-Feb-2021	4	<p>Updated:</p> <ul style="list-style-type: none"> <li>lora_app.c renamed lora_app.h in Section 8.1.2, Section 8.1.4, Section 8.1.5, Section 8.1.6, Section 8.1.7, Section 8.1.8 and Section 8.1.9</li> <li>Table 38. Switch options for End_Node application configuration</li> <li>Table 39. Switch options for AT_Slave application configuration</li> </ul>
9-Jul-2021	5	<p>Updated:</p> <ul style="list-style-type: none"> <li>Overview section renamed Section 1 General information</li> <li>Intro of Section 11 SubGhz_Phy_PingPong application</li> <li>Figure 7. SubGhz_Phy_PingPong application setup</li> <li>Intro of Section 14 Dual-core management</li> <li>Section 14.1.3 MBMUX messages</li> <li>Section 14.2.5 RAM mapping</li> <li>Section 15.2 KMS key definition</li> <li>Section 15.3 LoRaWAN keys</li> <li>Figure 17. ROM memory mapping</li> <li>Section 15.5 How to size NVM for KMS data storage</li> <li>Section 15.6 KMS configuration files to build the application</li> <li>Section 17.1 Memory footprint</li> <li>Intro of Section 11 SubGhz_Phy_PingPong application</li> <li>Figure 7. SubGhz_Phy_PingPong application setup</li> <li>Intro of Section 14 Dual-core management</li> <li>Section 14.1.3 MBMUX messages</li> <li>Section 14.2.5 RAM mapping</li> <li>Section 15.2 KMS key definition</li> <li>Section 15.3 LoRaWAN keys</li> <li>Figure 17. ROM memory mapping</li> <li>Section 15.5 How to size NVM for KMS data storage</li> <li>Section 15.6 KMS configuration files to build the application</li> <li>Section 17.1 Memory footprint</li> </ul> <p>Added:</p> <ul style="list-style-type: none"> <li>Seven tables in Section 6.6 Application callbacks</li> <li>Section 12 SubGhz_Phy_Per application</li> <li>Section 16 How to secure a LoRaWAN application</li> </ul>

Date	Version	Changes
21-Feb-2022	6	<p>Updated:</p> <ul style="list-style-type: none"> <li>Table 1. Acronyms and terms</li> <li>Section 2 STM32CubeWL overview</li> <li>Section 6 LoRaWAN middleware description</li> </ul> <p>Added:</p> <ul style="list-style-type: none"> <li>Section 5 LoRaWAN stack description</li> <li>Section 5.4.3 Required STM32 peripherals to drive the radio</li> <li>Section 9.1 LoRaWAN user code sections description</li> <li>Section 9.2.12 Context management</li> <li>Section 13 LoRaWAN context management description</li> <li>Section 13.1 NVM context management data API definition</li> <li>Section 10.2 Device configuration</li> <li>Section 10.2.1 Modulation definition</li> <li>Section 10.2.2 Payload length</li> <li>Section 10.2.3 Region and frequency</li> <li>Section 10.2.4 Bandwidth, spreading factor and data rate</li> <li>Section 10.2.5 Preamble length</li> </ul> <p>Removed:</p> <ul style="list-style-type: none"> <li>STM32CubeWL architecture</li> </ul>
17-Nov-2022	7	<p>Updated:</p> <ul style="list-style-type: none"> <li>Table 1. Acronyms and terms</li> <li>Section 2 STM32CubeWL overview</li> <li>Section 6 LoRaWAN middleware description</li> </ul> <p>Added:</p> <ul style="list-style-type: none"> <li>Section 5 LoRaWAN stack description</li> <li>Section 5.4.3 Required STM32 peripherals to drive the radio</li> <li>Section 9.1 LoRaWAN user code sections description</li> <li>Section 9.2.12 Context management</li> <li>Section 13 LoRaWAN context management description</li> <li>Section 13.1 NVM context management data API definition</li> <li>Section 10.2 Device configuration</li> <li>Section 10.2.1 Modulation definition</li> <li>Section 10.2.2 Payload length</li> <li>Section 10.2.3 Region and frequency</li> <li>Section 10.2.4 Bandwidth, spreading factor and data rate</li> <li>Section 10.2.5 Preamble length</li> </ul> <p>Removed:</p> <ul style="list-style-type: none"> <li>STM32CubeWL architecture</li> </ul>
20-Mar-2025	8	<p>Changed the scope of this document from STM32WL Series to STM32WL5x/Ex devices.</p>

## Contents

<b>1</b>	<b>General information</b>	<b>2</b>
<b>2</b>	<b>STM32CubeWL overview</b>	<b>4</b>
<b>3</b>	<b>SubGHz HAL driver</b>	<b>6</b>
3.1	SubGHz resources	6
3.2	SubGHz data transfers	6
<b>4</b>	<b>BSP STM32WL55 Nucleo boards</b>	<b>7</b>
4.1	Frequency band	7
4.2	RF switch	7
4.3	RF wakeup time	8
4.4	TCXO	8
4.5	Power regulation	8
4.6	STM32WL Nucleo board schematic	9
<b>5</b>	<b>BSP B-WL5M-SUBG1 boards</b>	<b>10</b>
5.1	RF switch	10
5.2	External components	10
<b>6</b>	<b>LoRaWAN stack description</b>	<b>11</b>
6.1	LoRaWAN specifications version	12
6.2	LoRaWAN commissioning	12
6.3	LoRaWAN certification	12
6.4	Architecture	13
6.4.1	Static view	13
6.4.2	Dynamic view	14
6.4.3	Required STM32 peripherals to drive the radio	15
<b>7</b>	<b>LoRaWAN middleware description</b>	<b>16</b>
7.1	LoRaWAN middleware initialization	16
7.2	Middleware MAC layer APIs	16
7.3	Middleware MAC layer callbacks	17
7.4	Middleware MAC layer timers	17
7.5	Middleware LmHandler application function	18
7.5.1	Operation model	19
7.5.2	Main application functions definition	20
7.6	Application callbacks	20
7.7	Extended application functions	22
<b>8</b>	<b>SubGHz_Phy layer middleware description</b>	<b>25</b>

8.1	Middleware radio driver structure .....	25
8.2	Radio IRQ interrupts .....	27
<b>9</b>	<b>Utilities description .....</b>	<b>28</b>
9.1	Sequencer .....	28
9.2	Timer server .....	30
9.3	Low-power functions .....	30
9.4	System time .....	33
9.5	Trace .....	34
<b>10</b>	<b>LoRaWAN_End_Node application .....</b>	<b>36</b>
10.1	LoRaWAN user code sections description .....	36
10.2	Device configuration .....	36
10.2.1	Activation methods and keys .....	36
10.2.2	LoRa Class activation .....	37
10.2.3	Tx trigger .....	37
10.2.4	Duty cycle .....	37
10.2.5	Application port .....	37
10.2.6	Confirm/unconfirmed mode .....	37
10.2.7	Data buffer size .....	38
10.2.8	Adaptive data rate (ADR) .....	38
10.2.9	Tx power .....	38
10.2.10	Ping periodicity .....	38
10.2.11	LoRa band selection .....	39
10.2.12	Context management .....	39
10.2.13	LoRaWAN version .....	39
10.2.14	LoRaWAN packages .....	39
10.2.15	LoRaWAN packages version .....	40
10.2.16	Debug switch .....	40
10.2.17	Low-power switch .....	40
10.2.18	Trace level .....	41
10.3	Device configuration summary for LoRaWAN_End_Node application .....	42
<b>11</b>	<b>SubGhz_Phy_PingPong application .....</b>	<b>44</b>
11.1	SubGhz_Phy_PingPong hardware/software environment setup .....	44
11.2	Device configuration .....	44
11.2.1	Modulation definition .....	44
11.2.2	Payload length .....	45
11.2.3	Region and frequency .....	45
11.2.4	Bandwidth, spreading factor and data rate .....	45

11.2.5	Preamble length	45
11.3	Device configuration summary for SubGhz_Phy_PingPong application	46
<b>12</b>	<b>SubGhz_Phy_LrFhss application</b>	<b>47</b>
12.1	SubGhz_Phy_LrFhss hardware/software environment setup	47
12.2	Device configuration summary for SubGhz_Phy_LrFhss application	47
<b>13</b>	<b>SubGhz_Phy_Per application</b>	<b>48</b>
13.1	SubGhz_Phy_Per hardware/software environment setup	48
13.2	Device configuration summary for SubGhz_Phy_Per application	49
<b>14</b>	<b>AT_Slave applications</b>	<b>50</b>
<b>15</b>	<b>LoRaWAN context management description</b>	<b>54</b>
15.1	NVM context management data API definition	54
<b>16</b>	<b>Dual-core management</b>	<b>55</b>
16.1	Mailbox mechanism	55
16.1.1	Mailbox multiplexer (MBMUX)	55
16.1.2	Mailbox features	56
16.1.3	MBMUX messages	57
16.2	Intercore memory	58
16.2.1	CPU2 capabilities	58
16.2.2	Mailbox sequence to execute a CPU2 function from a CPU1 call	58
16.2.3	Mapping table	60
16.2.4	Option-byte warning	61
16.2.5	RAM mapping	61
16.3	Startup sequence	63
<b>17</b>	<b>Key management services (KMS)</b>	<b>65</b>
17.1	KMS key types	66
17.2	KMS key definition	66
17.3	LoRaWAN keys	67
17.4	KMS key memory mapping for user applications	68
17.5	How to size NVM for KMS data storage	68
17.6	KMS configuration files to build the application	69
17.7	Embedded keys	69
<b>18</b>	<b>How to secure a LoRaWAN application</b>	<b>70</b>
<b>19</b>	<b>System performances</b>	<b>71</b>
19.1	Memory footprint	71
19.2	Real-time constraints	72
19.3	Power consumption	72

<b>Revision history .....</b>	<b>.74</b>
<b>List of tables .....</b>	<b>.80</b>
<b>List of figures.....</b>	<b>.81</b>

## List of tables

<b>Table 1.</b>	Acronyms and terms	2
<b>Table 2.</b>	LoRaWAN and SubGHz_Phy projects list	3
<b>Table 3.</b>	BSP radio switch	7
<b>Table 4.</b>	RF states versus switch configuration	8
<b>Table 5.</b>	BSP radio wakeup time	8
<b>Table 6.</b>	BSP radio TCXO	8
<b>Table 7.</b>	BSP radio SMPS	8
<b>Table 8.</b>	BSP radio switch	10
<b>Table 9.</b>	LoRaWAN stack description	11
<b>Table 10.</b>	LoRaWAN certification	13
<b>Table 11.</b>	LoRaWAN middleware initialization	16
<b>Table 12.</b>	MCPS services	16
<b>Table 13.</b>	MLME services	16
<b>Table 14.</b>	MIB services	17
<b>Table 15.</b>	LoRaMacPrimitives_t structure description	17
<b>Table 16.</b>	MAC Timer events	17
<b>Table 17.</b>	LmHandler main functions	20
<b>Table 18.</b>	LmHandlerCallbacks_t callback structure description	20
<b>Table 19.</b>	Getter/setter functions	22
<b>Table 20.</b>	Radio_s structure callbacks	25
<b>Table 21.</b>	Radio IRQ bit mapping and definition	27
<b>Table 22.</b>	Sequencer APIs	28
<b>Table 23.</b>	While-loop standard vs. sequencer implementation	29
<b>Table 24.</b>	Timer server APIs	30
<b>Table 25.</b>	Low-power APIs	30
<b>Table 26.</b>	Low-level APIs	32
<b>Table 27.</b>	System time functions	33
<b>Table 28.</b>	Trace functions	34
<b>Table 29.</b>	LoRaWAN user functions	36
<b>Table 30.</b>	Switch options for LoRaWAN_End_Node application configuration	42
<b>Table 31.</b>	SubGHz_Phy_PingPong modulation configuration	44
<b>Table 32.</b>	SubGHz_Phy_PingPong bandwidth, SF and DR configuration	45
<b>Table 33.</b>	SubGHz_Phy_PingPong preamble configuration	45
<b>Table 34.</b>	Switch options for SubGHz_Phy_PingPong application configuration	46
<b>Table 35.</b>	Switch options for SubGHz_Phy_LrFhss application configuration	47
<b>Table 36.</b>	Switch options for SubGHz_Phy_Per application configuration	49
<b>Table 37.</b>	AT commands	50
<b>Table 38.</b>	Switch options for AT_Slave applications configuration	52
<b>Table 39.</b>	LoRaWAN NVM context structure	54
<b>Table 40.</b>	LoRaWAN context management API and callbacks	54
<b>Table 41.</b>	STM32WL5x RAM mapping	61
<b>Table 42.</b>	STM32WL5x RAM allocation and shared buffer	61
<b>Table 43.</b>	Global KMS blob elements	66
<b>Table 44.</b>	LoRaWAN static keys with blob attributes	67
<b>Table 45.</b>	LoRaWAN dynamic keys with blob attributes	67
<b>Table 46.</b>	Memory footprint values for LoRaWAN_End_Node application	71
<b>Table 47.</b>	Document revision history	74



## List of figures

<b>Figure 1.</b>	Project file structure . . . . .	5
<b>Figure 2.</b>	NUCLEO-WL55JC schematic. . . . .	9
<b>Figure 3.</b>	Static LoRa architecture. . . . .	13
<b>Figure 4.</b>	Class A Tx and Rx processing MSC . . . . .	14
<b>Figure 5.</b>	Operation model . . . . .	19
<b>Figure 6.</b>	Example of low-power mode dynamic view. . . . .	31
<b>Figure 7.</b>	SubGhz_Phy_PingPong application setup . . . . .	44
<b>Figure 8.</b>	SubGhz_Phy_LrFhss application setup . . . . .	47
<b>Figure 9.</b>	SubGhz_Phy_Per application setup . . . . .	48
<b>Figure 10.</b>	Mailbox overview . . . . .	55
<b>Figure 11.</b>	MBMUX - Multiplexer between features and IPCC channels . . . . .	56
<b>Figure 12.</b>	Mailbox messages through MBMUX and IPCC channels . . . . .	57
<b>Figure 13.</b>	CPU1 to CPU2 feature_func_X() process. . . . .	59
<b>Figure 14.</b>	MBMUX communication table. . . . .	60
<b>Figure 15.</b>	Startup sequence . . . . .	63
<b>Figure 16.</b>	MBMUX initialization . . . . .	64
<b>Figure 17.</b>	KMS overall architecture . . . . .	65
<b>Figure 18.</b>	ROM memory mapping . . . . .	68
<b>Figure 19.</b>	Flash memory and RAM footprint . . . . .	71
<b>Figure 20.</b>	Rx/Tx time diagram . . . . .	72
<b>Figure 21.</b>	NUCLEO-WL55JC1 current consumption versus time . . . . .	73
<b>Figure 22.</b>	NUCLEO-WL55JC1 current consumption in Stop 2 mode . . . . .	73

**IMPORTANT NOTICE – READ CAREFULLY**

STMicroelectronics NV and its subsidiaries ("ST") reserve the right to make changes, corrections, enhancements, modifications, and improvements to ST products and/or to this document at any time without notice. Purchasers should obtain the latest relevant information on ST products before placing orders. ST products are sold pursuant to ST's terms and conditions of sale in place at the time of order acknowledgment.

Purchasers are solely responsible for the choice, selection, and use of ST products and ST assumes no liability for application assistance or the design of purchasers' products.

No license, express or implied, to any intellectual property right is granted by ST herein.

Resale of ST products with provisions different from the information set forth herein shall void any warranty granted by ST for such product.

ST and the ST logo are trademarks of ST. For additional information about ST trademarks, refer to [www.st.com/trademarks](http://www.st.com/trademarks). All other product or service names are the property of their respective owners.

Information in this document supersedes and replaces information previously supplied in any prior versions of this document.

© 2025 STMicroelectronics – All rights reserved