



Embedded passion

**Integrate  
STM32™ CubeMX® into Atollic®  
TrueSTUDIO®**

# Requirements

## Assumptions:

- Atollic® TrueSTUDIO® v.4.3.1 (or later) is installed on your computer.
- The latest available version of STM32 CubeMX Eclipse plug-in (part-number: "ST SW-STM32095")

## Constraints

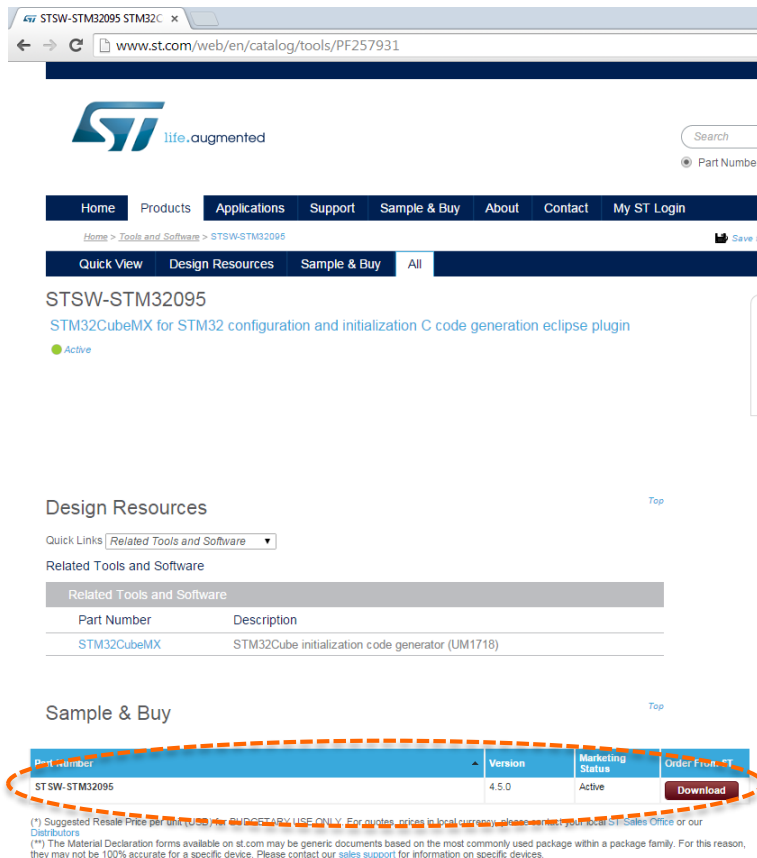
- Atollic tries to assure that succeeding versions of Atollic TrueSTUDIO works with the latest version of STM32 CubeMX. Contact [support@atollic.com](mailto:support@atollic.com) if you have any questions.

# Quick summary

## **Summary of installation steps:**

- Download STM32 CubeMX from ST webpage
- Install the plug-in using the Eclipse installation system (P2)
- Open STM32CubeMX perspective to start working!

# Download STM32 CubeMX Eclipse plug-in



STW-STM32095 STM32C x

www.st.com/web/en/catalog/tools/PF257931

ST life.augmented

Search

Part Number

Home Products Applications Support Sample & Buy About Contact My ST Login

Home > Tools and Software > STSW-STM32095

Quick View Design Resources Sample & Buy All

STSW-STM32095

STM32CubeMX for STM32 configuration and initialization C code generation eclipse plugin

Active

Design Resources

Quick Links Related Tools and Software

Related Tools and Software

Part Number	Description
STM32CubeMX	STM32Cube initialization code generator (UM1718)

Sample & Buy

Part Number	Version	Marketing Status	Order From
STSW-STM32095	4.5.0	Active	Download

(\*) Suggested Resale Price per unit (USD) for CUBEF2095 (USE ONLY For quotes, prices to local currency, please contact your local ST Sales Office or our Distributors  
 (\*\*) The Material Declaration forms available on st.com may be generic documents based on the most commonly used package within a package family. For this reason, they may not be 100% accurate for a specific device. Please contact our sales support for information on specific devices.

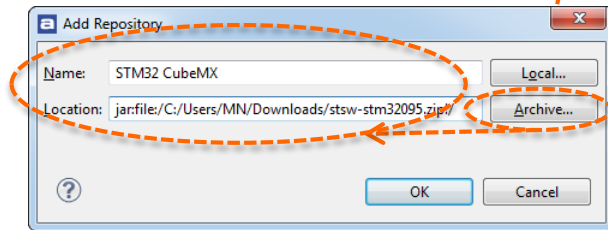
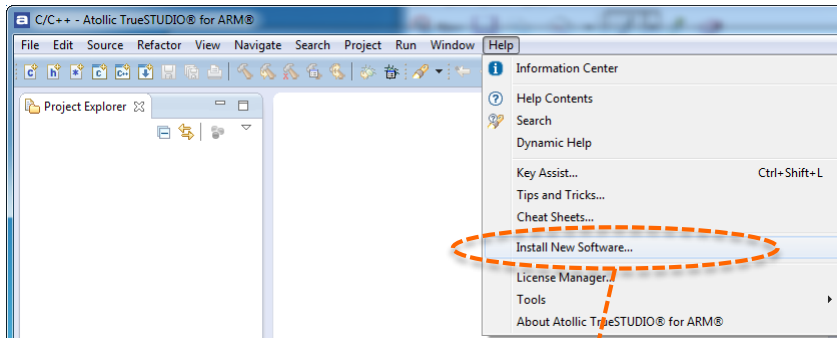
Navigate to:

<http://www.st.com/web/en/catalog/tools/PF257931>

- Scroll down to "Sample & Buy":
  - Download the plugin by clicking *Download*



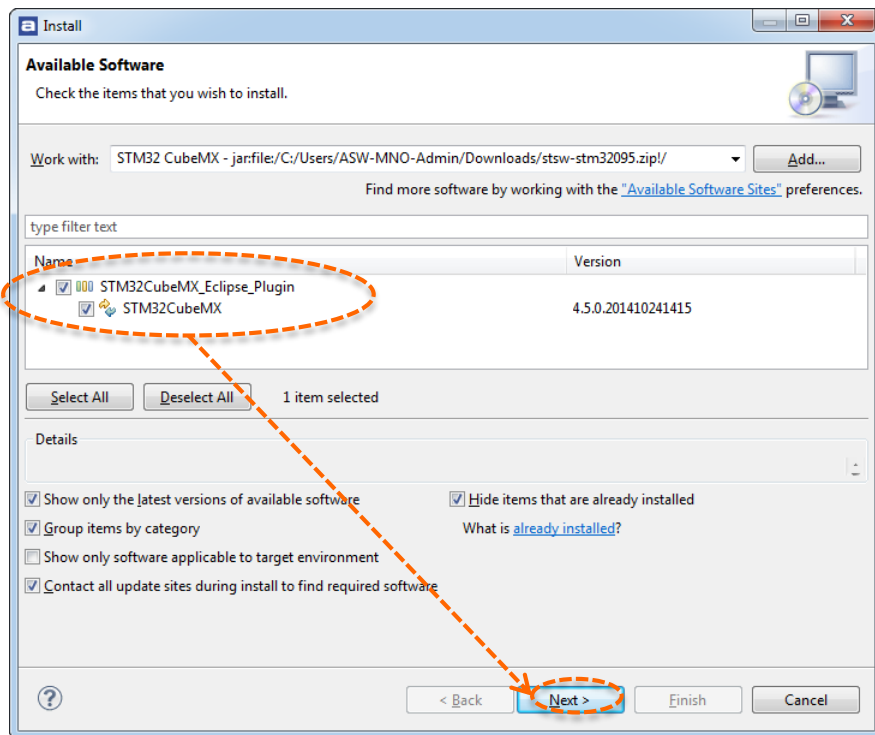
# Install STM32 CubeMX using P2



- Start Atollic® TrueSTUDIO®
- *Help* → *Install New Software (P2)*
- Click the *Add* button to point out a plug-in to be installed in TrueSTUDIO
- Choose:
  - *Archive*
  - Browse for downloaded zip-file (stsw-stm32095.zip)
  - Click *OK*
  - Name field: *STM32 CubeMX*
  - Click *OK*



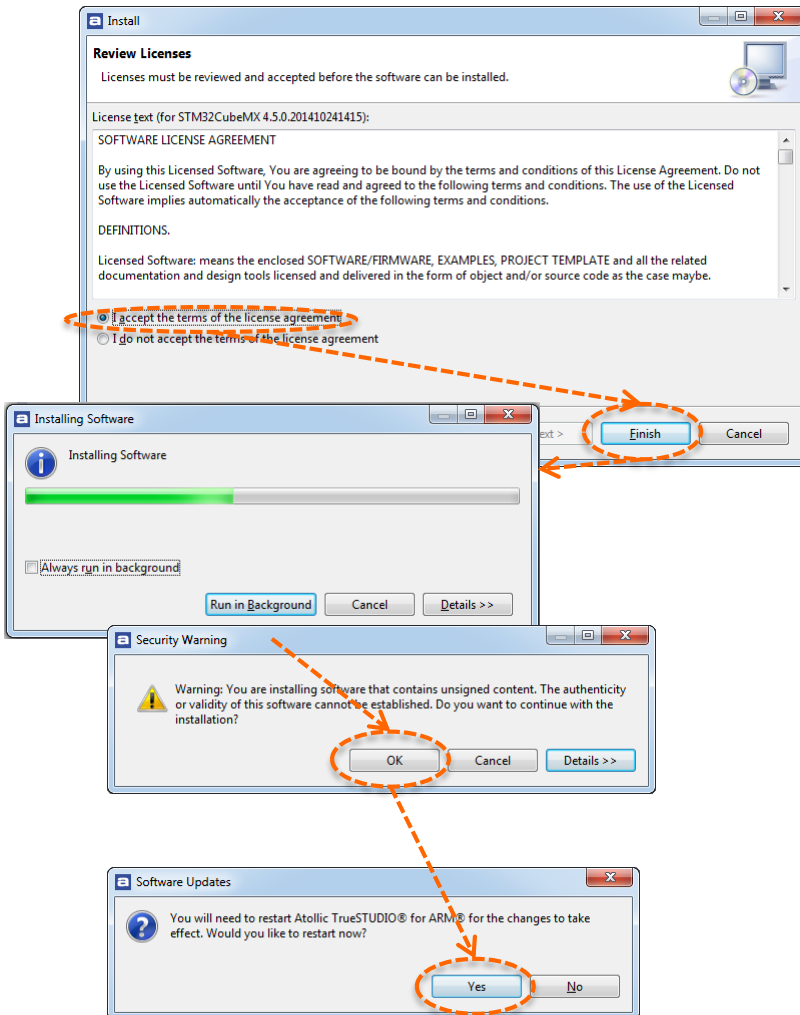
# Choose items



- Select packages (all) to be installed and click *Next*

- On *Install details* page simply click *Next*

# Finish installation of CubeMX

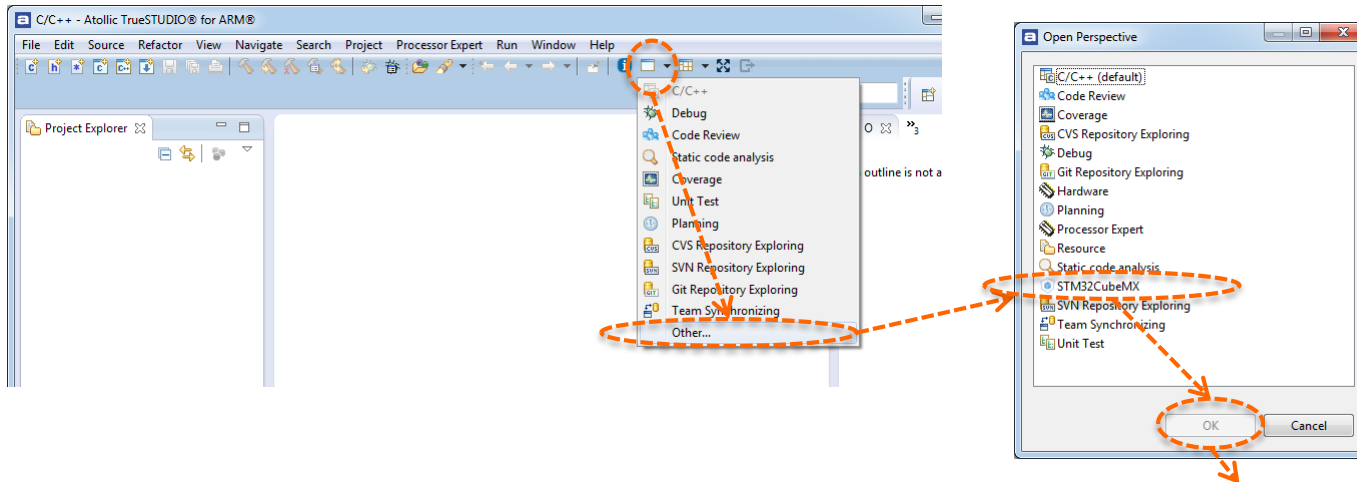


- Review the license agreement, *select I accept..*
- Click *Finish*
- Plug-in is being installed
- A notification about unsigned content will show-up, click OK
- Click Yes to re-launch TrueSTUDIO!

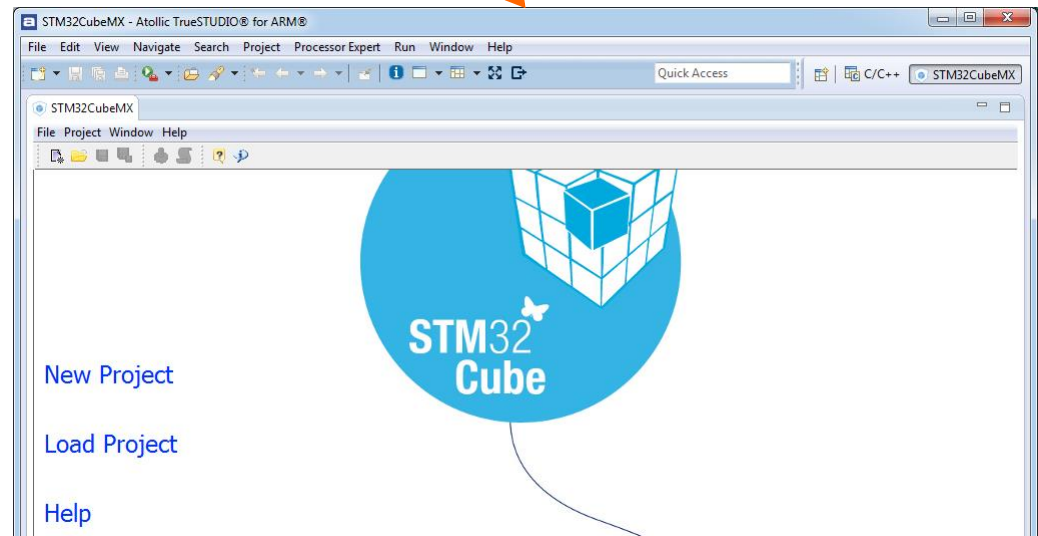




# Open PEx perspective



- Work with STM32 CubeMX® in its own perspective by clicking:
- *Window* → *Open Perspective*
- *Other...*
- *STM32CubeMX*
- *OK*





More information:

[www.atollic.com](http://www.atollic.com)

**EUROPE & WORLDWIDE**

Atollic AB  
Science Park  
Gjuterigatan 7  
SE-553 18 Jönköping  
Sweden  
+46 36 19 60 50

[info@atollic.com](mailto:info@atollic.com)

**USA & AMERICAS**

Atollic Inc  
241 Boston Post Road West  
First Floor  
Marlborough  
Massachusetts 01752  
+1 (508) 657-1158

[sales.usa@atollic.com](mailto:sales.usa@atollic.com)

