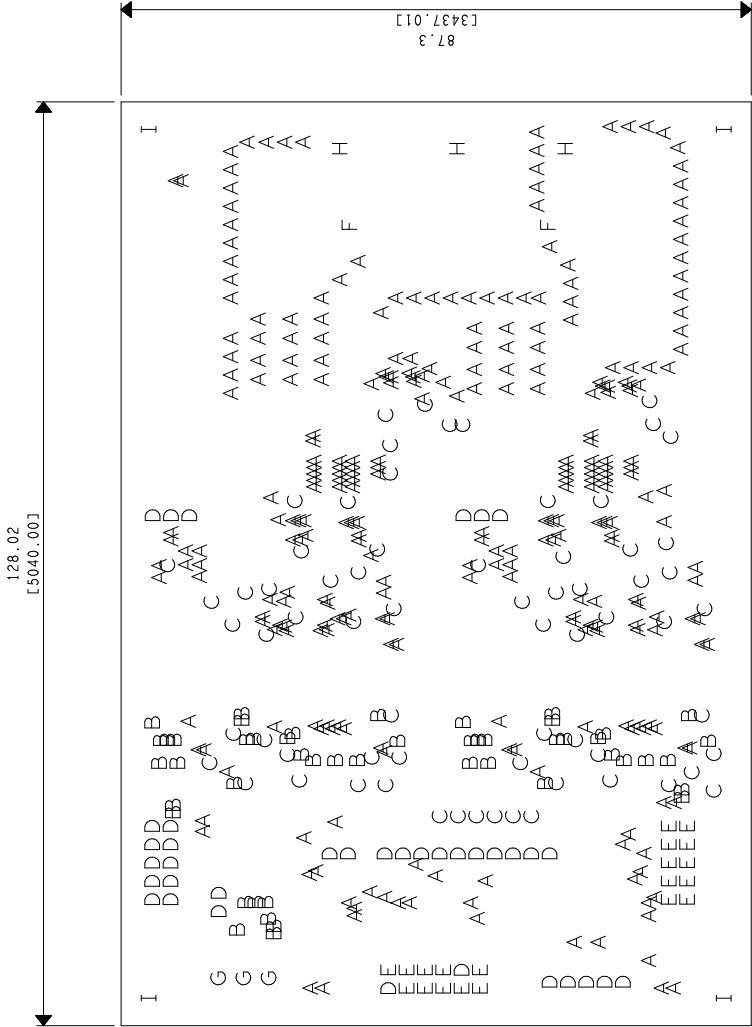
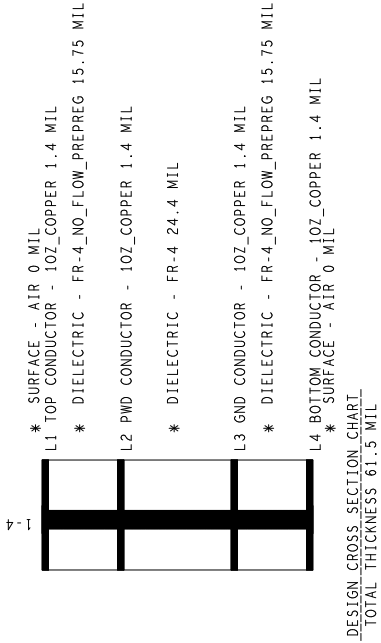




DRILL CHART: TOP to BOTTOM			
ALL UNITS ARE IN MILS			
FIGURE	FINISHED_SIZE	PLATED	QTY
A	11.81	PLATED	300
B	15.75	PLATED	49
C	31.5	PLATED	68
D	39.37	PLATED	37
E	40.0	PLATED	20
F	43.31	PLATED	2
G	55.0	PLATED	3
H	128.0	PLATED	3
I	125.98	NON-PLATED	4

TOTAL HOLES: 486



FABRICATION NOTES:

- 1:FABRICATE USING LATEST REVISION OF STM SPECIFICATION.
- 2:FABRICATE USING MASTER ARTWORK EVSTGAP4S R4 FOR CIRCUIT PATTERN.  
NO DEVIATION FROM MASTER ARTWORK ARE PERMITTED WITHOUT WRITTEN APPROVAL FROM AN AUTHORIZED "CLIENT NAME" REPRESENTATIVE.
- 3:VENDOR MUST BE UL QUALIFIED AND BOARDS MUST BE IDENTIFIED WITH APPROPRIATE VENDOR UL IDENTIFICATION MARK. LOT OR JOB NUMBER AND PCB MATERIAL FLAMMABILITY RATING (94V-0) MINIMUM.
- 4:MATERIAL - FR4 RoHS COMPLIANT MINIMUM 125 C.
- 5:SEE "Cross Section Chart" FOR BOARD THICKNESS, COPPER WEIGHT AND LAYER CONSTRUCTION.
- 6:FINISH - HAL LF RoHS Compliant
- 7:FOR SMT COMPONENTS WITH PIN PITCH OF 0.019 INCH OR MORE NO GANG RELIEF OF SOLDER MASK IS ALLOWED.
- 8:SILKSCREEN TO BE WHITE, NON CONDUCTIVE, EPOXY INK OR EQUIVALENT.
- 9:THIS IS NOT A CONTROLLED IMPEDANCE BOARD.
- 10:DESIGNATED AREA OR INSPECTION AND TEST STAMP.
- 11:ON SMD PCB MUST BE IDENTIFIED MANUFACTURER LOGO AND PCB TYPE (MEANS OF MATERIAL TYPE INDICATED ON THE YELLOW CARD DOCUMENT).
- 12:TEARDROPPING OF VIAS AND PADS ALLOWED AT PAD TO TRACE INTERSECTION TO INSURE A 2 MILS ANULAR RING AT THE JUNCTION.
- 13:REMOVE SILKSCREEN FROM SOLDERABLE SURFACES.
- 14:ALL BOARD TO BE 100% ELECTRICALLY NETLIST TESTED FOR OPENS AND ON SHORTS.APPLY TEST STAMP IN REFERENCED AREA.
- 15:THIS BOARD SHALL BE FULLY COMPLIANT WITH UL796.

REVISION DATE		11-Mar-20	29-July-20	21-Oct-21		
		Description			Symbol	
		DRILLING AND PROFILING			STGAP4S	
AMS Group		AGRATE B. ITALY			Group	
ALL RIGHTS STRICTLY RESERVED. REPRODUCTION OR ISSUE TO THIRD PARTIES IN ANY FORM WHATEVER IS NOT PERMITTED WITHOUT WRITTEN AUTHORIZATION FROM STMicroelectronics.		TOLERANCE UNLESS NOTED			ISO	SCALE: 1:1
		UNIT=MM				
		linear	0 >10 <10	>50 <200 >200	ANG. LES.	Material
Drawn	RIGO M.	date	20-Dec-2019	±0.1 ±0.2 ±0.3 ±0.5 ±1°	Treatment and surface finishing	
Approved		date		accurate ±0.05 ±0.1 ±0.15 ±0.25 ±30°		