
ST Payment Secure Solution - Java Card™ platform with 135 KB of user NVM for Visa®, MasterCard®, JCB® and Interac® applications

Data brief

**Features**

- Java Card™ platform
- Up to 135 Kbytes of user NVM
- Certified payment applications: Visa®, MasterCard®, JCB® and Interac®
- Common Personalization Specification (CPS) personalization

Platform

- Java Card™ 3.0.4 operating system
- GlobalPlatform® 2.1.1 MG 1.0.1 API support
- CPS-compliant
- ISO/IEC 7816 T=0 or T=1 contact protocol
- ISO/IEC 14443 Type A contactless interface

Hardware

- ST31 product based on a 32-bit secure Arm® core (SC000™)
- Up to 130 Kbytes of User nonvolatile memory

Cryptography

- NESCRYPT cryptographic RSA coprocessor
- Enhanced DES accelerator (EDES)

Personalization

- EMV® CPS v1.1 compliant
- VSDC (Visa smart debit/credit) Personalization Specification v 2.0
- M/Chip® Advance v1.2.1 Common Personalization Specification

Applications

- MasterCard M/Chip Advance v1.2.1
 - Dual interface supporting PayPass® contactless payments
 - Data sharing single account configuration 2
 - PIN sharing
- Visa VSDC 2.9
 - Dual interface supporting payWave® contactless payments
- JCB D1.1 dual interface
- Interac Flash 1.5

1 Description

The STPay-Tiger is a GlobalPlatform 2.1.1 Java Card™ platform for payment applications with up to 135 Kbytes of user nonvolatile memory.

It can be configured to support Visa VSDC, MasterCard M/Chip Advance, JCB and *Interac* Flash payment applications.

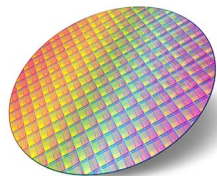
The STPay System-on-Chip (SoC) family is a packaged offering by ST, comprising a highly secure microcontroller, embedded application software, tools and support aimed at serving the needs of card embedders and personalization bureaus worldwide.

For detailed configuration data, contact your local ST sales office.

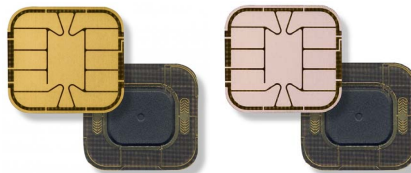
2 Certifications



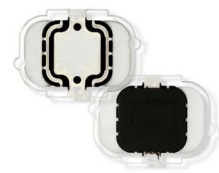
3 Delivery forms



Sawn/unsawn wafer



Dual-interface gold and silver micromodules



Contactless modules

4 Development tools

The STPay tool is an easy-to-use toolkit that allows issuers and service providers to:

- install and test Java applets
- personalize, test and validate STPay-Java sample cards

The tool comes with sample personalization scripts for VSDC, M/Chip Advance, JCB and *Interac* to facilitate script development/validation and fast card deployment.

arm



5 Revision history

Table 1. Document revision history

Date	Revision	Changes
28-Sep-2017	1	Initial release.

IMPORTANT NOTICE – PLEASE READ CAREFULLY

STMicroelectronics NV and its subsidiaries (“ST”) reserve the right to make changes, corrections, enhancements, modifications, and improvements to ST products and/or to this document at any time without notice. Purchasers should obtain the latest relevant information on ST products before placing orders. ST products are sold pursuant to ST’s terms and conditions of sale in place at the time of order acknowledgment.

Purchasers are solely responsible for the choice, selection, and use of ST products and ST assumes no liability for application assistance or the design of Purchasers’ products.

No license, express or implied, to any intellectual property right is granted by ST herein.

Resale of ST products with provisions different from the information set forth herein shall void any warranty granted by ST for such product.

ST and the ST logo are trademarks of ST. All other product or service names are the property of their respective owners.

Information in this document supersedes and replaces information previously supplied in any prior versions of this document.

© 2017 STMicroelectronics – All rights reserved

