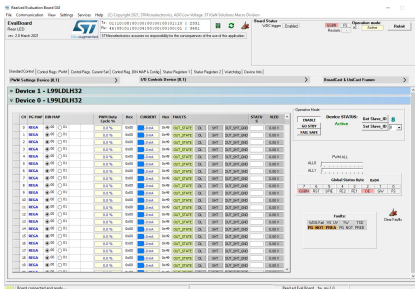


Graphical user interface (GUI) dedicated to set and control the L99LDLH32



Features

- Complete graphical user interface (GUI) for all the EV-L99LDLH32GEN device boards

Description

The **STSW-EVLDLH32GEN** is the graphical user interface (GUI) dedicated to set and control the 12 V L99LDLH32 devices assembled in the corresponding evaluation board EV-L99LDLH32GEN. The STSW-EVLDLH32GEN has been developed by using Visual Studio/C sharp and it works with the SPC582B automotive MCU programmed through a dedicated firmware.

Product status link

[STSW-EVLDLH32GEN](#)

Product summary

Order code

STSW-EVLDLH32GEN

Revision history

Table 1. Document revision history

Date	Revision	Changes
16-Sep-2022	1	Initial release.

IMPORTANT NOTICE – READ CAREFULLY

STMicroelectronics NV and its subsidiaries (“ST”) reserve the right to make changes, corrections, enhancements, modifications, and improvements to ST products and/or to this document at any time without notice. Purchasers should obtain the latest relevant information on ST products before placing orders. ST products are sold pursuant to ST’s terms and conditions of sale in place at the time of order acknowledgment.

Purchasers are solely responsible for the choice, selection, and use of ST products and ST assumes no liability for application assistance or the design of purchasers’ products.

No license, express or implied, to any intellectual property right is granted by ST herein.

Resale of ST products with provisions different from the information set forth herein shall void any warranty granted by ST for such product.

ST and the ST logo are trademarks of ST. For additional information about ST trademarks, refer to www.st.com/trademarks. All other product or service names are the property of their respective owners.

Information in this document supersedes and replaces information previously supplied in any prior versions of this document.

© 2022 STMicroelectronics – All rights reserved