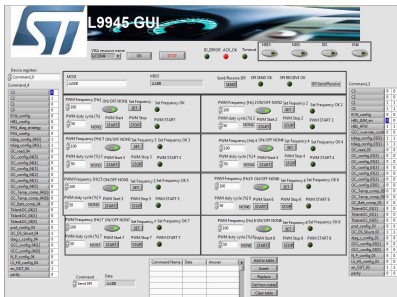


Graphical User Interface (GUI) based on the EVAL-L9945 evaluation board



Features

- Connection with Microcontroller by RS232 port
- Automatic COM connection
- L9945 SPI register read and write
- Capability to generate programmable duration actuation
- Possibility to control L9945 parallel actuation

Description

The **STSW-L9945** is a Graphical User Interface (GUI) that allows to initialize and control the EVAL-L9945 evaluation board by changing parameters through the SPI protocol, manage the parallel PWM input and read the output.

The L9945 GUI has been developed using Labview and it uses, as Microcontroller interface, the SPC563M-DISP Discovery.

Product status link

[STSW-L9945](#)

Revision history

Table 1. Document revision history

Date	Version	Changes
26-Feb-2019	1	Initial release.

IMPORTANT NOTICE – PLEASE READ CAREFULLY

STMicroelectronics NV and its subsidiaries (“ST”) reserve the right to make changes, corrections, enhancements, modifications, and improvements to ST products and/or to this document at any time without notice. Purchasers should obtain the latest relevant information on ST products before placing orders. ST products are sold pursuant to ST’s terms and conditions of sale in place at the time of order acknowledgement.

Purchasers are solely responsible for the choice, selection, and use of ST products and ST assumes no liability for application assistance or the design of Purchasers’ products.

No license, express or implied, to any intellectual property right is granted by ST herein.

Resale of ST products with provisions different from the information set forth herein shall void any warranty granted by ST for such product.

ST and the ST logo are trademarks of ST. All other product or service names are the property of their respective owners.

Information in this document supersedes and replaces information previously supplied in any prior versions of this document.

© 2019 STMicroelectronics – All rights reserved