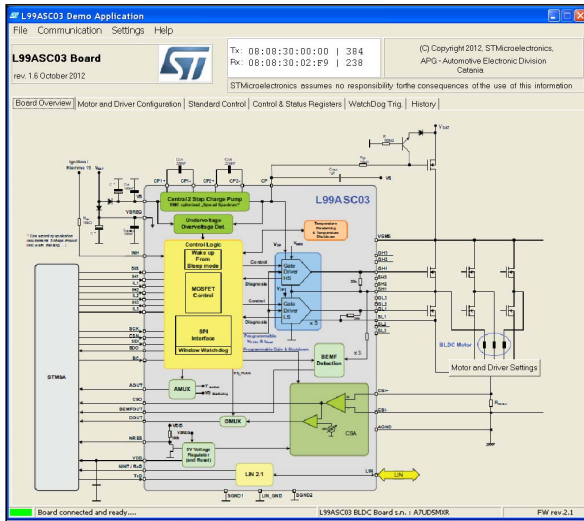


## Graphical User Interface (GUI) for L99ASC03 evaluation board

Data brief



### Features

- Complete Graphical User Interface (GUI) for EVAL-L99ASC03 evaluation board

### Description

The STSW-L99ASC03 is the Graphical User Interface (GUI) dedicated to set and control the EVAL-L99ASC03. This is an evaluation board designed for sensorless 3Phase BLDC motor control.

The STSW-L99ASC03 has been developed by using C++ and it works with motherboard based on STM8 microcontroller programmed with dedicated firmware that drives the L99ASC03 assembled in the daughter board.

**Table 1. Device summary**

Order code	Reference
STSW-L99ASC03	STSW-L99ASC03 GUI for EVAL-L99ASC03

# 1 Revision history

**Table 2. Document revision history**

Date	Revision	Changes
21-Jun-2018	1	Initial release.

**IMPORTANT NOTICE – PLEASE READ CAREFULLY**

STMicroelectronics NV and its subsidiaries (“ST”) reserve the right to make changes, corrections, enhancements, modifications, and improvements to ST products and/or to this document at any time without notice. Purchasers should obtain the latest relevant information on ST products before placing orders. ST products are sold pursuant to ST’s terms and conditions of sale in place at the time of order acknowledgement.

Purchasers are solely responsible for the choice, selection, and use of ST products and ST assumes no liability for application assistance or the design of Purchasers’ products.

No license, express or implied, to any intellectual property right is granted by ST herein.

Resale of ST products with provisions different from the information set forth herein shall void any warranty granted by ST for such product.

ST and the ST logo are trademarks of ST. All other product or service names are the property of their respective owners.

Information in this document supersedes and replaces information previously supplied in any prior versions of this document.

© 2018 STMicroelectronics – All rights reserved