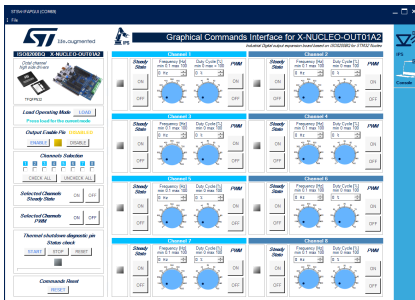


Demonstration firmware for NUCLEO-G431RB enabling STSW-IFAPGUI on X-NUCLEO-OUT01A2 expansion board



Features

- Full control of the X-NUCLEO-OUT01A2 expansion board via the STSW-IFAPGUI graphical user interface
- Control of:
 - output channel switching frequency and duty cycle configuration
 - visualization of diagnostic signal (common overtemperature/communication error)
 - both Direct Control Mode and Synchronous Control Mode management

Description

The STSW-OUT1G4 firmware runs on the NUCLEO-G431RB development board and allows controlling the X-NUCLEO-OUT01A2 expansion board using the STSW-IFAPGUI graphical user interface.

The STSW-OUT1G4 contains the software routines that enable the USB-based communication between the NUCLEO-G431RB and the system where the STSW-IFAPGUI runs, and the control of a single X-NUCLEO-OUT01A2.

The STSW-IFAPGUI is based on a common engine and several plug-ins designed to communicate through the USB connection with the application layer running on the NUCLEO-G431RB development board stacked with the expansion board.

Product summary	
Demonstration firmware for NUCLEO-G431RB enabling STSW-IFAPGUI on X-NUCLEO-OUT01A2 expansion board	STSW-OUT1G4
Industrial digital output expansion board based on ISO8200BQ for STM32 Nucleo	X-NUCLEO-OUT01A2
STM32 Nucleo-64 development board with STM32G431RB MCU	NUCLEO-G431RB
Graphical user interface for the industrial IPS evaluation boards based on STM32 Nucleo	STSW-IFAPGUI
Applications	Industrial Safety Industrial Tools

1 How to control a single expansion board with IFAPGUI

This application scenario is based on the default on-board switches and resistors configuration of the X-NUCLEO-OUT01A2.

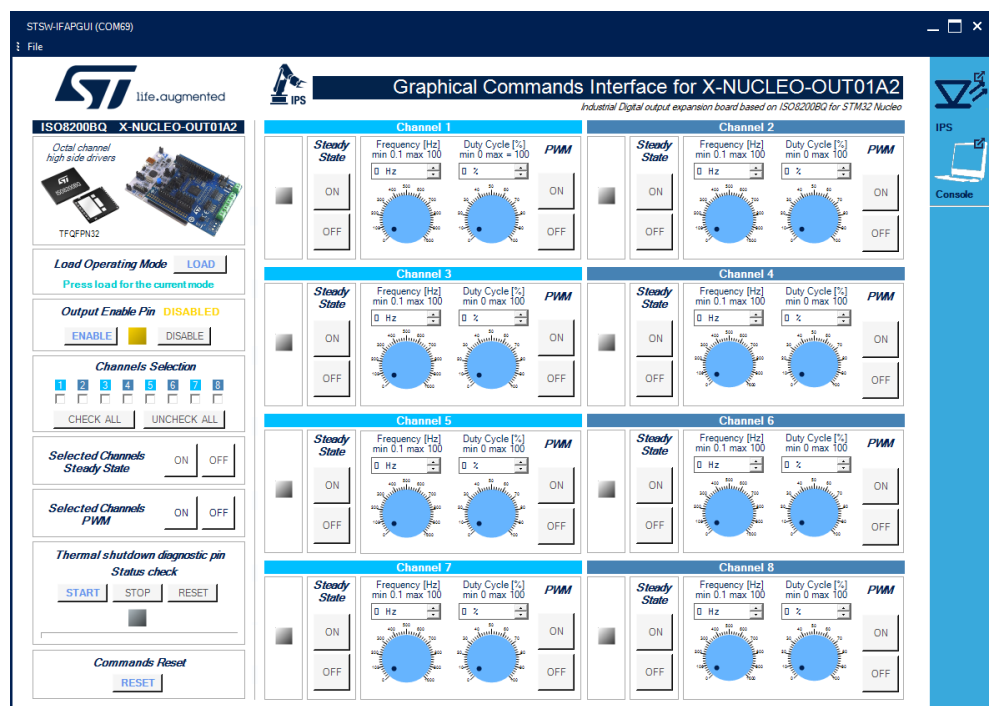
- Step 1.** Stack the X-NUCLEO-OUT01A2 on the NUCLEO-G431RB board flashed with the STSW-OUT1G4 firmware through the Arduino connectors.
- Step 2.** Connect the two stacked boards to your PC or laptop USB port through a micro-USB cable. The STM32 is supplied via USB (3.3 V) and the flashed firmware starts running. Press the black button on the NUCLEO-G431RB board to reset the firmware.
- Step 3.** Launch the STSW-IFAPGUI.
When the application starts, the firmware running on the STM32 is automatically detected and a COM port is opened for communication.

Figure 1. STSW-IFAPGUI COM port opened

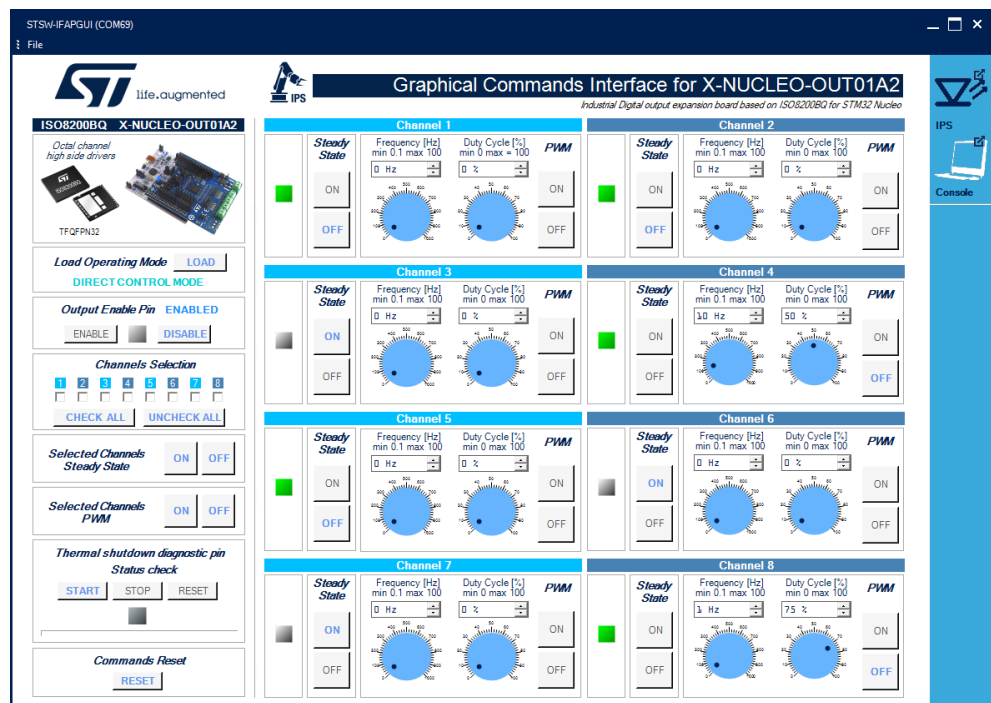


- Step 4.** Click on the GUI STM32 Nucleo icon after it turns blue (it remains green until the firmware identification is complete).
The STSW-IFAPGUI appears on the screen.

Figure 2. STSW-IFAPGUI main control panel



- Step 5.** Use the dedicated section of the GUI for the desired channel of ISO8200BQ to:
- Manage channel steady state (the left part in each channel section).
 - Manage channel PWM settings (the right part in each channel section).
- Use the bottom left side of the GUI to:
- Select the Control Mode to be used (DCM or SCM, last one is the default).
 - Enable/disable outputs, properly setting the Output Enable pin.
 - Enable/disable and reset diagnostic pin polling activity.
 - Reset all channel features to OFF state.
- Step 6.** Connect the load and supply the power stage of the X-NUCLEO-OUT01A2 with a 24 V rail via the CN1 connector.
- Step 7.** Select the desired switching frequency and duty cycle of the desired output channel through the [Pulse Width Modulation] controls in the right part of desired channel section.
- Step 8.** The desired output channel steady state can be activated/deactivated by clicking on the [ON/OFF] buttons in the left part of the desired channel section in the [Steady State] sub-section.
- Step 9.** Click on the [START] button in the [Thermal shutdown diagnostic pin Status check] area on the bottom left side of the GUI to monitor the on/off status on the FAULT pin on ISO8200BQ. You can stop monitoring the fault status by clicking on the [STOP] button in the same section. Press the [RESET] button to reset the fault status.
- Step 10.** Click on [Enable] button in [Output Enable Pin] section to drive the output pins. Click on [Disable] in the same section to turn off all output pins.
- Step 11.** Click on [RESET] button in [Commands Reset] section to reset any channel setting and also the diagnostic pin status monitoring.

Figure 3. STSW-IFAPGUI in action


2 How to control a single expansion board with Command Line Interface

This application scenario is based on the default on-board switches and resistors configuration of X-NUCLEO-OUT01A2.

- Step 1.** Plug the X-NUCLEO-OUT01A2 expansion board on top of the NUCLEO-G431RB board, flashed with the STSW-OUT1G4 firmware, through the Arduino connectors.
- Step 2.** Connect the two stacked boards to your PC or laptop USB port through a micro-USB cable. The STM32 is supplied via USB (3.3 V) and the flashed firmware starts running. Press the black button on the NUCLEO-G431RB board to reset the firmware.
- Step 3.** Launch the serial communication terminal application (TeraTerm in our notes). When the application starts, the serial communication must be configured as follows:

Figure 4. Tera Term: select serial communication method

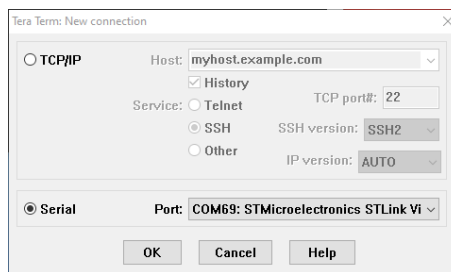


Figure 5. Tera Term: Setup / Terminal...

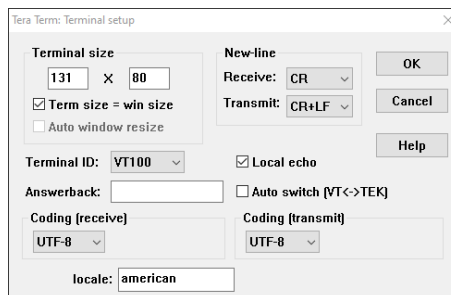
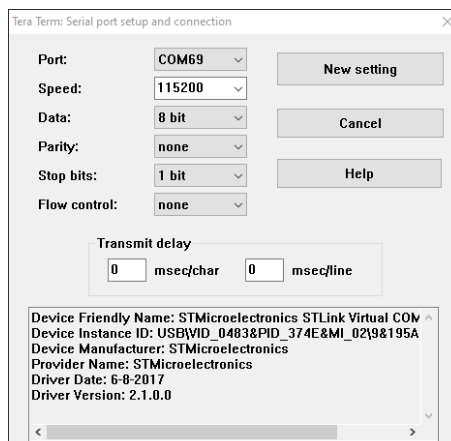


Figure 6. Tera Term: Setup / Serial port...



Step 4. Press Enter and then type 'h' for help:

Figure 7. CLI help

```

COM69 - Tera Term VT
File Edit Setup Control Window Help
ST Switch Console Firmware 001.00.00 [Aug  2 2023 18:44:00] for chip 8200
Type 'h' to get some help
h

-----
Welcome to ST Switch Console help utility!
You're running Firmware ST Switch Console Firmware 001.00.00 [Aug  2 2023 18:44:00] for chip 8200
Two apis are implemented in this version:
- The Switch Api
- The System Api

To execute a switch command, type 'W' followed by a command id
and then param1 param2 param3 param4 if there are parameters
e.g. type 'W0 0 8200 1' to initialize one 8200 device
To execute a system command, type 'S' followed by a command id
e.g. type 'S1' to get the PU version

To get more help regarding switch commands, just type 'W'
To get more help regarding system commands, just type 'S'
    
```

Step 5. Type 'w?' for a list of commands available:

Figure 8. Command list

```

COM69 - Tera Term VT
File Edit Setup Control Window Help
ST Switch Console Firmware 001.00.00 [Aug  2 2023 18:44:00] for chip 8200
Type 'h' to get some help
w?

Switch API commands list:
Id: 0 IPS_SWITCH_API_INIT
W0 Instance<1B> ChipId<2B> NbDevices<1B> -> Output: status<4B>
Id: 1 IPS_SWITCH_API_DEINIT
W1 Instance<1B> -> Output: status<4B>
Id: 2 IPS_SWITCH_API_READ_ID
W2 Instance<1B> -> Output: status<6B>
Id: 3 IPS_SWITCH_API_GET_FW_VERSION
W3 Instance<1B> -> Output: status<8B>
Id: 4 IPS_SWITCH_API_GET_CAPABILITIES
W4 Instance<1B> -> Output: status<5B>
Id: 5 IPS_SWITCH_API_GET_FAULT_STATUS
W5 Instance<1B> -> Output: status<5B>
Id: 6 IPS_SWITCH_API_GET_CHANNEL_STATUS
W6 Instance<1B> ChanId<1B> -> Output: status<5B>
Id: 7 IPS_SWITCH_API_SET_CHANNEL_STATUS
W7 Instance<1B> ChanId<1B> ChanStatus<1B> -> Output: status<4B>
Id: 8 IPS_SWITCH_API_GET_ALL_CHANNEL_STATUS
W8 Instance<1B> -> Output: status<5B>
Id: 9 IPS_SWITCH_API_SET_ALL_CHANNEL_STATUS
W9 Instance<1B> ChanBitmap<1B> -> Output: status<4B>
Id: 10 IPS_SWITCH_API_GET_CHANNEL_FREQ
W10 Instance<1B> ChanId<1B> -> Output: status<6B>
Id: 11 IPS_SWITCH_API_SET_CHANNEL_FREQ
W11 Instance<1B> ChanId<1B> Freq<2B> -> Output: status<4B>
Id: 12 IPS_SWITCH_API_GET_CHANNEL_DC
W12 Instance<1B> ChanId<1B> -> Output: status<5B>
Id: 13 IPS_SWITCH_API_SET_CHANNEL_DC
W13 Instance<1B> ChanId<1B> DutyCycle<1B> -> Output: status<4B>
Id: 14 IPS_SWITCH_API_GET_PWM_ENABLE
W14 Instance<1B> ChanId<1B> -> Output: status<5B>
Id: 15 IPS_SWITCH_API_SET_PWM_ENABLE
W15 Instance<1B> ChanId<1B> PwmEnable<1B> -> Output: status<4B>
Id: 17 IPS_SWITCH_API_GET_CTRL_PIN_STATUS
W17 Instance<1B> CtrlPinId<1B> -> Output: status<5B>
Id: 18 IPS_SWITCH_API_SET_CTRL_PIN_STATUS
W18 Instance<1B> CtrlPinId<1B> CtrlPinStatus<1B> -> Output: status<4B>
Id: 19 IPS_SWITCH_API_SET_OPERATING_MODE
W19 Instance<1B> -> Output: status<5B>
    
```

Step 6. Initialize the device as first action using w0 command:

Figure 9. Device init

```

COM69 - Tera Term VT
File Edit Setup Control Window Help
ST Switch Console Firmware 001.00.00 [Aug  2 2023 18:44:00] for chip 8200
Type 'h' to get some help
W0 0 8200 1
    
```

Step 7. Continue to interact with the device using commands from the available command list (see above).

Revision history

Table 1. Document revision history

Date	Revision	Changes
06-Oct-2023	1	Initial release.

IMPORTANT NOTICE – READ CAREFULLY

STMicroelectronics NV and its subsidiaries (“ST”) reserve the right to make changes, corrections, enhancements, modifications, and improvements to ST products and/or to this document at any time without notice. Purchasers should obtain the latest relevant information on ST products before placing orders. ST products are sold pursuant to ST’s terms and conditions of sale in place at the time of order acknowledgment.

Purchasers are solely responsible for the choice, selection, and use of ST products and ST assumes no liability for application assistance or the design of purchasers’ products.

No license, express or implied, to any intellectual property right is granted by ST herein.

Resale of ST products with provisions different from the information set forth herein shall void any warranty granted by ST for such product.

ST and the ST logo are trademarks of ST. For additional information about ST trademarks, refer to www.st.com/trademarks. All other product or service names are the property of their respective owners.

Information in this document supersedes and replaces information previously supplied in any prior versions of this document.

© 2023 STMicroelectronics – All rights reserved