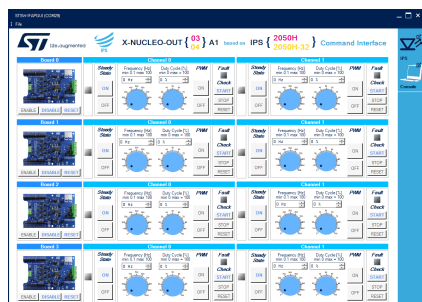


## Evaluation firmware for NUCLEO-G431RB enabling STSW-IFAPGUI on STDES-OUT03DO8 and STDES-OUT04DO8 digital output modules



### Features

- Full control of the [STDES-OUT03DO8](#) and [STDES-OUT04DO8](#) octal digital output modules via the [STSW-IFAPGUI](#) graphical user interface
- Control of:
  - channel applications
  - output channel switching frequency and duty cycle configuration
  - visualization of diagnostic signals (OR-ed overload and overtemperature per-channel diagnostic)

### Description

The [STSW-OUT3D8G4](#) firmware runs on the [NUCLEO-G431RB](#) development board. It allows the control of the [STDES-OUT03DO8](#) or [STDES-OUT04DO8](#) reference designs using the [STSW-IFAPGUI](#) graphical user interface.

The [STSW-OUT3D8G4](#) contains the software routines that enable the USB-based communication between the [NUCLEO-G431RB](#) and the system where the [STSW-IFAPGUI](#) runs, and the control of the [STDES-OUT03DO8](#) or [STDES-OUT04DO8](#).

The firmware can control up to four expansion boards ([X-NUCLEO-OUT03A1](#) or [X-NUCLEO-OUT04A1](#)).

The [STSW-IFAPGUI](#) is based on a common engine and several plug-ins designed to communicate through USB connection with the application layer that runs on the [NUCLEO-G431RB](#) development board stacked with the expansion board.

Product summary	
Evaluation firmware for NUCLEO-G431RB enabling STSW-IFAPGUI on STDES-OUT03DO8 and STDES-OUT04DO8 digital output modules	<a href="#">STSW-OUT3D8G4</a>
60 V/20 A industrial octal digital output based on X-NUCLEO-OUT03A1	<a href="#">STDES-OUT03DO8</a>
60 V/40 A industrial octal digital output based on X-NUCLEO-OUT04A1	<a href="#">STDES-OUT04DO8</a>
STM32 Nucleo-64 development board with STM32G431RB MCU	<a href="#">NUCLEO-G431RB</a>
Graphical user interface for the industrial IPS and IO-Link transceiver evaluation boards based on STM32 Nucleo	<a href="#">STSW-IFAPGUI</a>
Applications	Industrial Safety Industrial Tools

# 1 How to control up to four expansion boards

This application scenario is based on the multiboard configuration of the on-board switch and resistors of [STDES-OUT03DO8](#) (or [STDES-OUT04DO8](#)). Details about how to configure the default board (board 0) and the additional ones (board 1, board 2, and board 3) are available in [UM2863](#). The following summarizes the multiboard setup.

**Table 1. Configuration of a stack of four expansion boards**

Board number	IN1	IN2	FLT1	FLT2
Board 0	R101	R102	R103	R104
Board 1	R131	R132	R133	R134
Board 2	R111	R112	R113	R114
Board 3	R121	R122	R123	R124

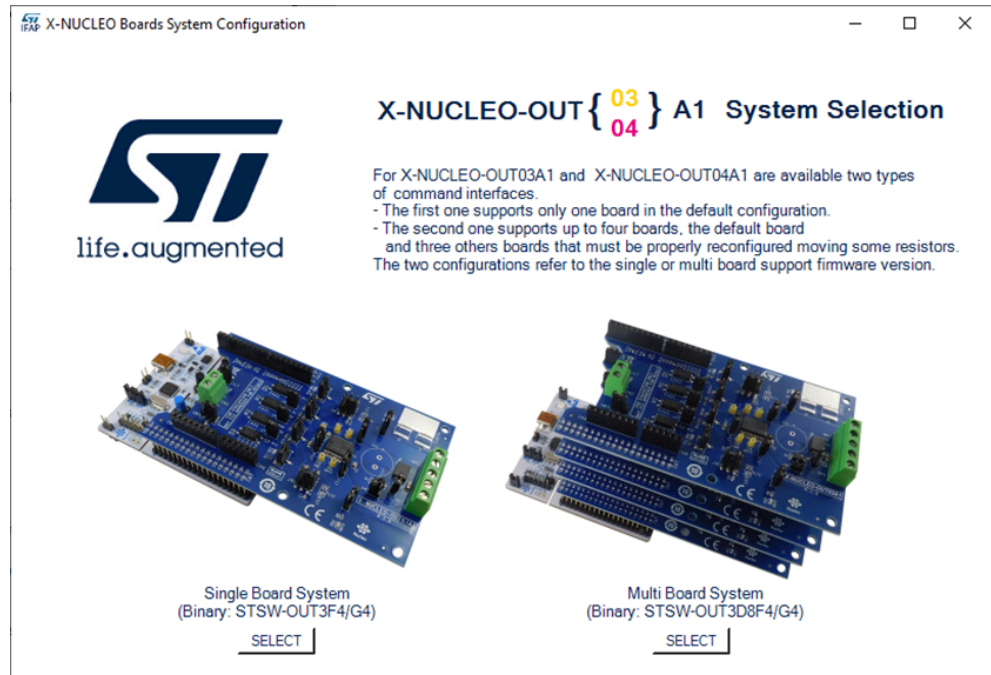
**Note:** When using board 2 and board 3, two jumpers must be used to close the morpho connectors pins in the STM32 Nucleo board: CN7.35-36 and CN10.25-26 closed.

- Step 1.** Connect the [STDES-OUT03DO8](#) (or [STDES-OUT04DO8](#)) to your PC or laptop USB port through a micro-USB cable.  
The STM32 is supplied via USB (3.3 V) and the flashed firmware starts running.  
Press the black button on the [NUCLEO-G431RB](#) board to reset the firmware.
- Step 2.** Launch the [STSW-IFAPGUI](#).  
When the application starts, the firmware running on the STM32 is automatically detected and a COM port is opened for communication.

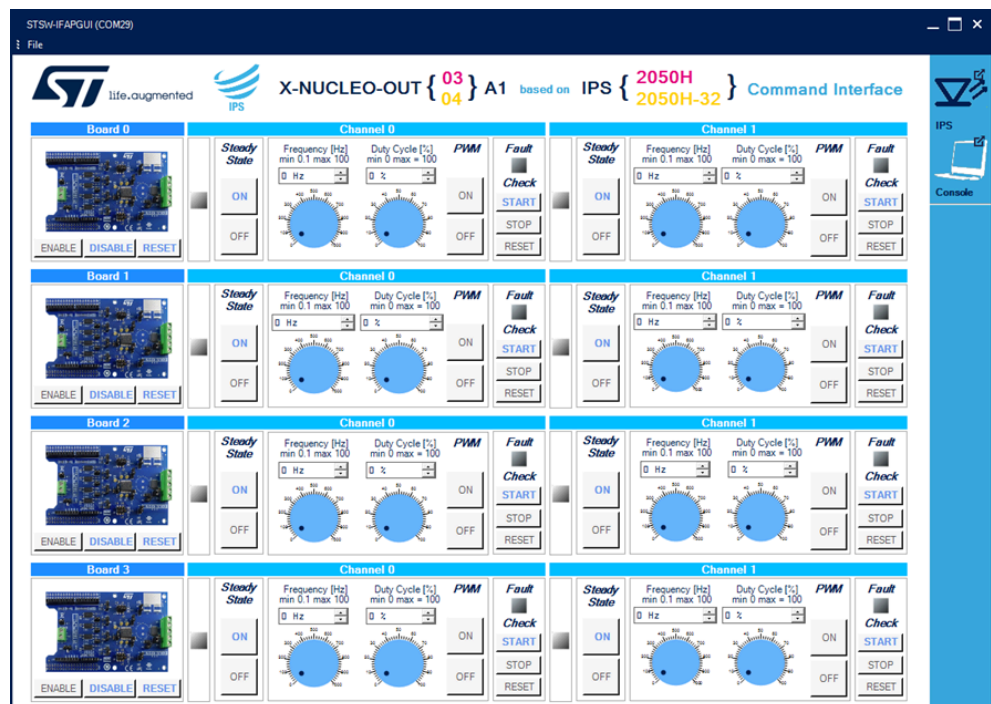
**Figure 1. STSW-IFAPGUI COM port opened**



- Step 3.** Click on the GUI STM32 Nucleo icon after it turns blue (it remains green until the firmware identification is complete).  
A popup window appears to let you choose the proper system configuration:

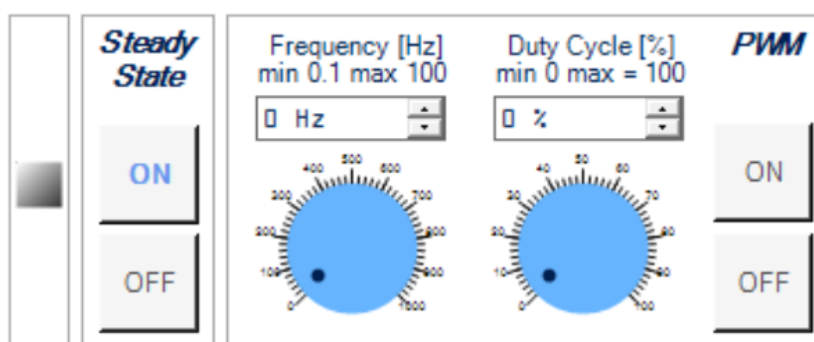
**Figure 2. System configuration selection panel**


- Step 4.** Select [Multi Board System] and the STSW-IFAPGUI appears on the screen.

**Figure 3. STSW-IFAPGUI main control panel**


- Step 5.** If all four boards are not physically connected, it is possible to disable the commands on the unconnected boards using the **[Disable]** button on the relevant boards. Pressing the same button, you can reenale the board once connected.
- Step 6.** The main control panel is divided in four rows, one for each board. Each row is divided in two columns, one per each channel of the on-board device. All the buttons with blue text are related to the currently active functions.
- For each channel:
- Use the left part of the GUI section to manage the channel steady state for **IPS2050H** (or **IPS2050H-32**)
  - Use the right part of the GUI section to manage its PWM settings.
- The figure below shows a detailed view of the GUI section for each channel.

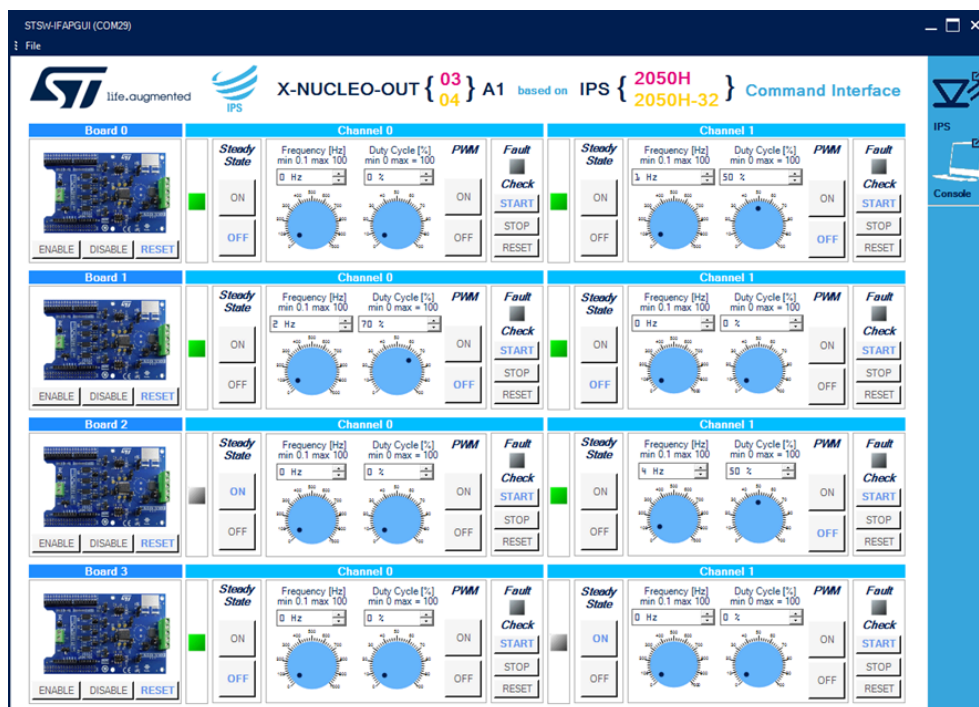
**Figure 4. STSW-IFAPGUI channel section**



- Step 7.** Connect the load and supply the power stage of each **X-NUCLEO-OUT03A1** (or **X-NUCLEO-OUT04A1**) present with a 24 V rail via the CN1 connectors.
- Step 8.** Select the desired switching frequency and duty cycle of the output channel through the dedicated controls of the desired board. Use the **[ON]** and **[OFF]** buttons under **[PWM]** to start and stop the PWM function. The button that starts the PWM is activated after selecting a frequency and a duty cycle.
- Step 9.** To activate the output channel steady state, use the **[ON]** button under **[Steady State]**. Use **[OFF]** to deactivate it.

- Step 10.** Click on the **[Start]** button under **[Fault Check]** on the right side of the GUI channel section to monitor the on/off status on the per-channel FAULT pin on **IPS2050H** (or **IPS2050H-32**) of the desired board. You can stop monitoring the fault status by clicking on the related **[STOP]** button. Press the **[RESET]** button to reset the related fault status.

**Figure 5. STSW-IFAPGUI in action**



## Revision history

**Table 2. Document revision history**

Date	Revision	Changes
12-Apr-2022	1	Initial release.

**IMPORTANT NOTICE – READ CAREFULLY**

STMicroelectronics NV and its subsidiaries ("ST") reserve the right to make changes, corrections, enhancements, modifications, and improvements to ST products and/or to this document at any time without notice. Purchasers should obtain the latest relevant information on ST products before placing orders. ST products are sold pursuant to ST's terms and conditions of sale in place at the time of order acknowledgment.

Purchasers are solely responsible for the choice, selection, and use of ST products and ST assumes no liability for application assistance or the design of purchasers' products.

No license, express or implied, to any intellectual property right is granted by ST herein.

Resale of ST products with provisions different from the information set forth herein shall void any warranty granted by ST for such product.

ST and the ST logo are trademarks of ST. For additional information about ST trademarks, refer to [www.st.com/trademarks](http://www.st.com/trademarks). All other product or service names are the property of their respective owners.

Information in this document supersedes and replaces information previously supplied in any prior versions of this document.

© 2022 STMicroelectronics – All rights reserved