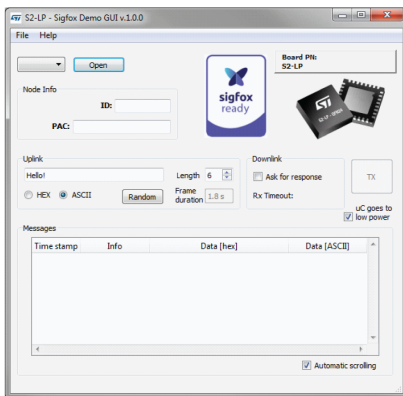


Evaluation SW package based on S2-LP



Features

- S2-LP - Sigfox Demo GUI PC application with graphical user interface
- ST-Sigfox library API for S2-LP
- Sample embedded applications provided
- SDK Eval NUCLEO-L0/L1/F0/F4 low level API to manage the motherboard (NUCLEO-STM32L0/L1/F0/F4) interfacing with the S2-LP daughterboard
- STM32L0/L1/F0/F4 HAL driver (STM32Cube)
- Support for STEVAL-IBD007V2, STEVAL-IDB008V2, STEVAL-FKI001V1, X-NUCLEO-S2868A2 and X-NUCLEO-S2915A1 and STDES-MONARCH reference design
- Drivers for PC (USB Virtual COM + mass storage)

Product summary

Ultra-low power, high performance, sub-1GHz transceiver [S2-LP](#)

Sub-1GHz (860-940 MHz) transceiver development kit based on S2-LP [STEVAL-FKI868V2](#)

Sub-1GHz transceiver development kit based on S2-LP [STEVAL-FKI915V1](#)

Evaluation platform based on the BlueNRG-1 [STEVAL-IDB007V2](#)

Evaluation platform based on the BlueNRG-2 [STEVAL-IDB008V2](#)

Dual radio BLE and Sub-1GHz development kit for Sigfox™ and LPWAN protocols with BlueNRG-1 and S2-LP [STEVAL-FKI001V1](#)

Sub-1 GHz 868 MHz RF expansion board based on S2-LP radio for STM32 Nucleo [X-NUCLEO-S2868A2](#)

Sub-1 GHz 915 MHz RF expansion board based on S2-LP radio for STM32 Nucleo [X-NUCLEO-S2915A1](#)

Sigfox Monarch reference design based on S2-LP and BlueNRG-2 [STDES-MONARCH](#)

Description

The [STSW-S2LP-SFX-DK](#) is an evaluation SW package for Sigfox networking with the [S2-LP](#) high performance, ultra-low power RF transceiver. It is designed to operate in the majority of radio configuration zones (RCZ) described by Sigfox.

The [STSW-S2LP-SFX-DK](#) SW package supports the [STEVAL-FKI868V2](#), [STEVAL-FKI915V1](#), [STEVAL-IDB007V2](#), [STEVAL-IDB008V2](#), [STEVAL-FKI001V1](#), [X-NUCLEO-S286A2](#), [X-NUCLEO-S2915A1](#) kit platforms and [STDES-MONARCH](#).

It provides an S2-LP Sigfox library with a complete set of APIs to develop embedded applications.

The S2-LP - Sigfox Demo GUI PC application provides an interactive interface to transmit messages to the Sigfox network and program the S2-LP nodes with the Sigfox ID to set the node for network communication.

Revision history

Table 1. Document revision history

| Date | Version | Changes |
|-------------|---------|--|
| 18-Nov-2016 | 1 | Initial release. |
| 23-May-2018 | 2 | Updated compatible HW, added product in summary table. |
| 20-Sep-2018 | 3 | Added products in summary table. |
| 14-Mar-2019 | 4 | Added products in features, description and summary table. |
| 09-Apr-2019 | 5 | Added link in description. |
| 08-Apr-2020 | 6 | Added products in features, description and summary table. |

IMPORTANT NOTICE – PLEASE READ CAREFULLY

STMicroelectronics NV and its subsidiaries (“ST”) reserve the right to make changes, corrections, enhancements, modifications, and improvements to ST products and/or to this document at any time without notice. Purchasers should obtain the latest relevant information on ST products before placing orders. ST products are sold pursuant to ST’s terms and conditions of sale in place at the time of order acknowledgement.

Purchasers are solely responsible for the choice, selection, and use of ST products and ST assumes no liability for application assistance or the design of Purchasers’ products.

No license, express or implied, to any intellectual property right is granted by ST herein.

Resale of ST products with provisions different from the information set forth herein shall void any warranty granted by ST for such product.

ST and the ST logo are trademarks of ST. For additional information about ST trademarks, please refer to www.st.com/trademarks. All other product or service names are the property of their respective owners.

Information in this document supersedes and replaces information previously supplied in any prior versions of this document.

© 2020 STMicroelectronics – All rights reserved