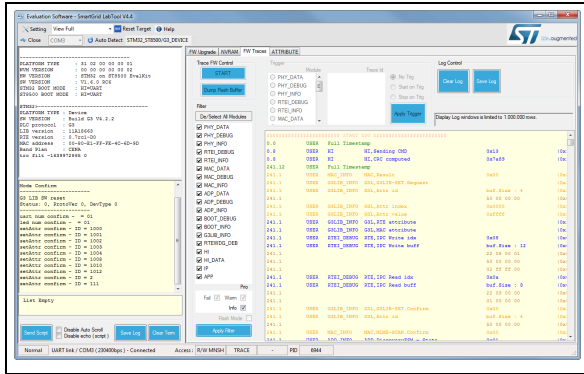


Generic PC GUI to control hardware based on STCOMET or ST8500 devices

Data brief



Description

This intuitive graphical user interface (GUI) for the Windows® environment allows the user to upgrade the firmware release, configure and control the evaluation kit. It supports both EVLKSTCOMET10-1 and EVALKITST8500-1.

The correct GUI user configuration is obtained from the automatic platform detection based on firmware and configuration criteria from the target.

Features

- Terminals windows
- Firmware upgrade (local and remote)
- NVRAM and attribute access (read/write)
- Binary and ASCII trace display

Revision history

Table 1. Document revision history

Date	Revision	Changes
21-Feb-2018	1	Initial release.

IMPORTANT NOTICE – PLEASE READ CAREFULLY

STMicroelectronics NV and its subsidiaries ("ST") reserve the right to make changes, corrections, enhancements, modifications, and improvements to ST products and/or to this document at any time without notice. Purchasers should obtain the latest relevant information on ST products before placing orders. ST products are sold pursuant to ST's terms and conditions of sale in place at the time of order acknowledgement.

Purchasers are solely responsible for the choice, selection, and use of ST products and ST assumes no liability for application assistance or the design of Purchasers' products.

No license, express or implied, to any intellectual property right is granted by ST herein.

Resale of ST products with provisions different from the information set forth herein shall void any warranty granted by ST for such product.

ST and the ST logo are trademarks of ST. All other product or service names are the property of their respective owners.

Information in this document supersedes and replaces information previously supplied in any prior versions of this document.

© 2018 STMicroelectronics – All rights reserved

