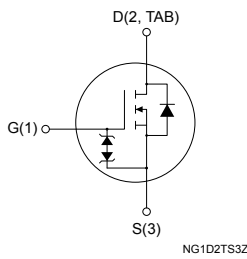
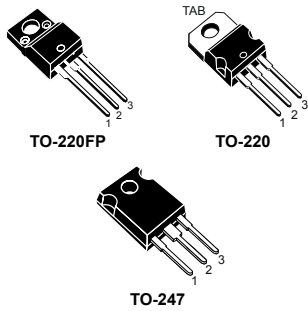




N-channel 1000 V, 2.7 Ω typ., 3.5 A SuperMESH Power MOSFET in a TO-220FP, TO-220 and TO-247 packages



Features

Order code	V_{DS}	$R_{DS(on)}$ max.	I_D
STF5NK100Z	1000 V	3.7 Ω	3.5 A
STP5NK100Z			
STW5NK100Z			

- 100% avalanche tested
- Gate charge minimized
- Very low intrinsic capacitance
- Zener-protected

Applications

- Switching applications

Description

These high-voltage devices are Zener-protected N-channel Power MOSFETs developed using the SuperMESH technology by STMicroelectronics, an optimization of the well-established PowerMESH. In addition to a significant reduction in on-resistance, these devices are designed to ensure a high level of dv/dt capability for the most demanding applications.

Product status links

[STF5NK100Z](#)

[STP5NK100Z](#)

[STW5NK100Z](#)

1 Electrical ratings

Table 1. Absolute maximum ratings

Symbol	Parameter	Value		Unit
		TO-220 TO-247	TO-220FP	
V _{DS}	Drain-source voltage	1000		V
V _{GS}	Gate-source voltage	±30		V
I _D	Drain current (continuous) at T _C = 25 °C	3.5	3.5 ⁽¹⁾	A
	Drain current (continuous) at T _C = 100 °C	2.2	2.2 ⁽¹⁾	
I _{DM} ⁽²⁾	Drain current (pulsed)	14	14 ⁽¹⁾	A
P _{TOT}	Total power dissipation at T _C = 25 °C	125	30	W
ESD	Gate-source human body model (C = 100 pF, R = 1.5 kΩ)	4		kV
dv/dt ⁽³⁾	Peak diode recovery voltage slope	4.5		V/ns
V _{ISO}	Insulation withstand voltage (RMS) from all three leads to external heat sink (t = 1 s; T _C = 25 °C)	-	2.5	kV
T _J	Operating junction temperature range	-55 to 150		°C
T _{stg}	Storage temperature range			

- Limited by maximum junction temperature.
- Pulse width limited by safe operating area.
- $I_{SD} \leq 3.5$ A, $di/dt \leq 200$ A/μs, $V_{DS} (peak) < V_{(BR)DSS}$.

Table 2. Thermal data

Symbol	Parameter	Value			Unit
		TO-220FP	TO-220	TO-247	
R _{thJC}	Thermal resistance, junction-to-case	4.2	1		°C/W
R _{thJA}	Thermal resistance, junction-to-ambient	62.5		50	°C/W

Table 3. Avalanche characteristics

Symbol	Parameter	Value	Unit
I _{AR}	Avalanche current, repetitive or not-repetitive (pulse width limited by T _J max.)	3.5	A
E _{AS}	Single pulse avalanche energy (starting T _J = 25 °C, I _D = I _{AR} , V _{DD} = 50 V)	250	mJ

2 Electrical characteristics

$T_C = 25\text{ °C}$ unless otherwise specified.

Table 4. On/off states

Symbol	Parameter	Test condition	Min.	Typ.	Max.	Unit
$V_{(BR)DSS}$	Drain-source Breakdown voltage	$I_D = 1\text{ mA}$, $V_{GS} = 0\text{ V}$	1000	-	-	V
I_{DSS}	Zero gate voltage drain current	$V_{GS} = 0\text{ V}$, $V_{DS} = 1000\text{ V}$	-	-	1	μA
		$V_{GS} = 0\text{ V}$, $V_{DS} = 1000\text{ V}$, $T_C = 125\text{ °C}^{(1)}$	-	-	50	
I_{GSS}	Gate body leakage current	$V_{DS} = 0\text{ V}$, $V_{GS} = \pm 20\text{ V}$	-	-	± 10	μA
$V_{GS(th)}$	Gate threshold voltage	$V_{DS} = V_{GS}$, $I_D = 100\text{ }\mu\text{A}$	3	3.75	4.5	V
$R_{DS(on)}$	Static drain-source on-resistance	$V_{GS} = 10\text{ V}$, $I_D = 1.75\text{ A}$	-	2.7	3.7	$\text{m}\Omega$

1. Specified by design, not tested in production.

Table 5. Dynamic

Symbol	Parameter	Test condition	Min.	Typ.	Max.	Unit
C_{iss}	Input capacitance	$V_{DS} = 25\text{ V}$, $f = 1\text{ MHz}$, $V_{GS} = 0\text{ V}$	-	1154	-	pF
C_{oss}	Output capacitance		-	106	-	pF
C_{riss}	Reverse transfer capacitance		-	21.3	-	pF
$C_{oss\text{ eq.}}^{(1)}$	Equivalent output capacitance	$V_{DS} = 0$ to 800 V , $V_{GS} = 0\text{ V}$	-	46.8	-	pF
Q_g	Total gate charge	$V_{DD} = 800\text{ V}$, $I_D = 3.5\text{ A}$, $V_{GS} = 0$ to 10 V (see the Figure 17. Test circuit for gate charge behavior)	-	42	59 ⁽²⁾	nC
Q_{gs}	Gate-source charge		-	7.3	-	nC
Q_{gd}	Gate-drain charge		-	21.7	-	nC

1. $C_{oss\text{ eq.}}$ is defined as a constant equivalent capacitance giving the same charging time as C_{oss} when V_{DS} increases from 0 to 80% V_{DSS} .

2. Specified by design, not tested in production.

Table 6. Switching times

Symbol	Parameter	Test condition	Min.	Typ.	Max.	Unit
$t_{d(on)}$	Turn-on delay time	$V_{DD} = 500\text{ V}$, $I_D = 1.75\text{ A}$, $R_G = 4.7\text{ }\Omega$, $V_{GS} = 10\text{ V}$ (see the Figure 16. Test circuit for resistive load switching times and Figure 21. Switching time waveform)	-	22.5	-	ns
t_r	Rise time		-	7.7	-	ns
$t_{d(off)}$	Turn-off delay time		-	51.5	-	ns
t_f	Fall time		-	19	-	ns

Table 7. Source drain diode

Symbol	Parameter	Test condition	Min.	Typ.	Max.	Unit
I_{SD}	Source-drain current	-	-	-	3.5	A
$I_{SDM}^{(1)}$	Source-drain current (pulsed)		-	-	14	A
$V_{SD}^{(2)}$	Forward on voltage	$I_{SD} = 3.5 \text{ A}$, $V_{GS} = 0 \text{ V}$	-	-	1.6	V
t_{rr}	Reverse recovery time	$I_{SD} = 3.5 \text{ A}$, $di/dt = 100 \text{ A}/\mu\text{s}$, $V_{DD} = 35 \text{ V}$ (see the Figure 18. Test circuit for inductive load switching and diode recovery times)	-	605	-	ns
Q_{rr}	Reverse recovery charge		-	3.09	-	μC
I_{RRM}	Reverse recovery current		-	10.5	-	A
t_{rr}	Reverse recovery time	$I_{SD} = 3.5 \text{ A}$, $di/dt = 100 \text{ A}/\mu\text{s}$, $V_{DD} = 35 \text{ V}$, $T_J = 150 \text{ }^\circ\text{C}$ (see the Figure 18. Test circuit for inductive load switching and diode recovery times)	-	742	-	ns
Q_{rr}	Reverse recovery charge		-	4.2	-	μC
I_{RRM}	Reverse recovery current		-	11.2	-	A

1. Pulse width is limited by safe operating area.
2. Pulsed: pulse duration = 300 μs , duty cycle 1.5%.

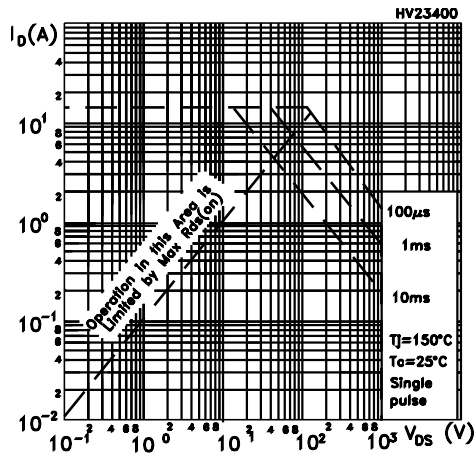
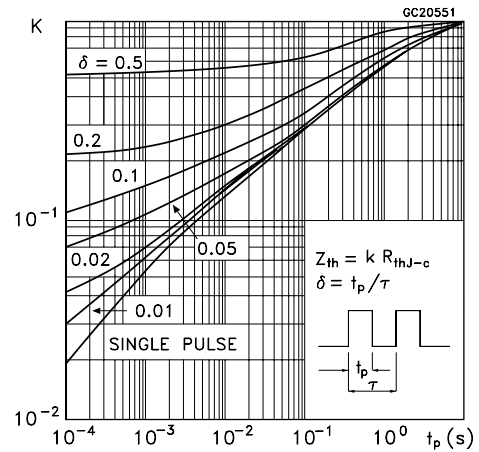
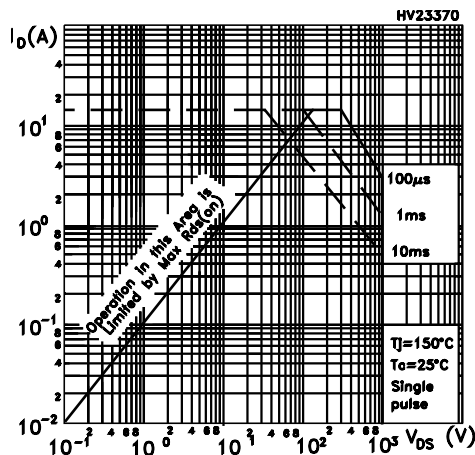
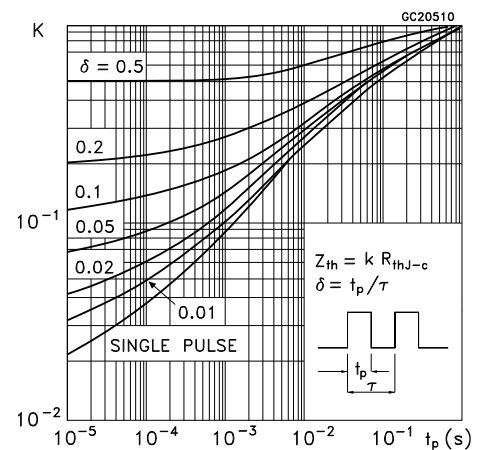
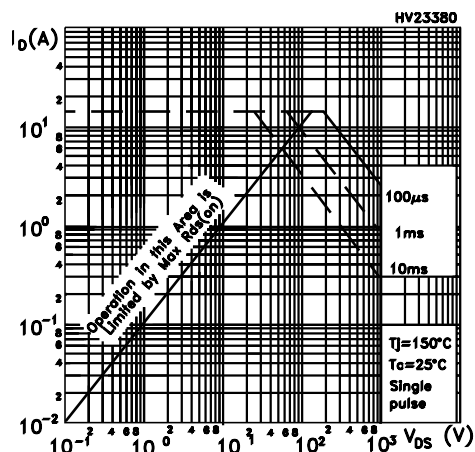
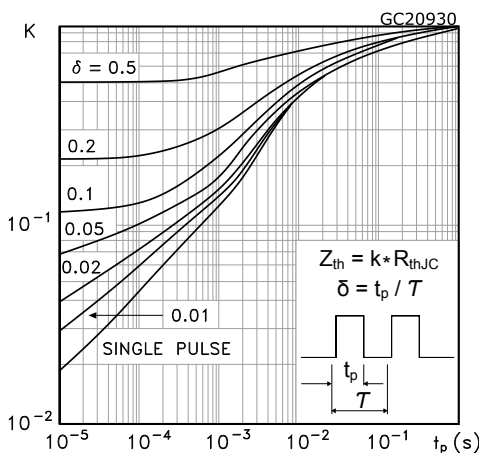
2.1 Electrical characteristics curves
Figure 1. Safe operating area for TO-220FP

Figure 2. Normalized transient thermal impedance for TO-220 FP

Figure 3. Safe operating area for TO-220

Figure 4. Normalized transient thermal impedance for TO-220

Figure 5. Safe operating area for TO-247

Figure 6. Normalized transient thermal impedance for TO-247


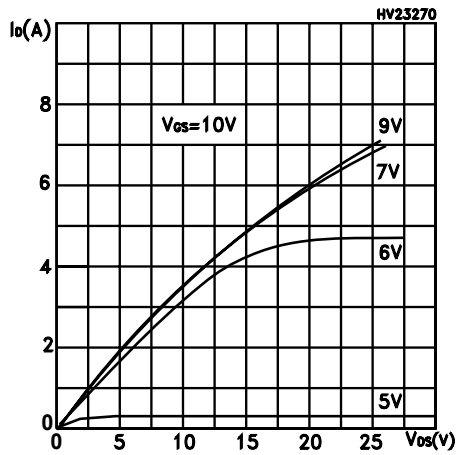
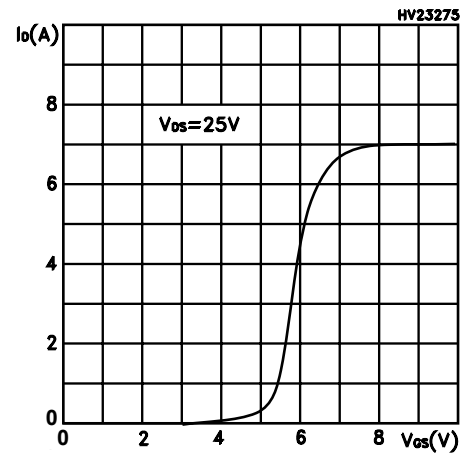
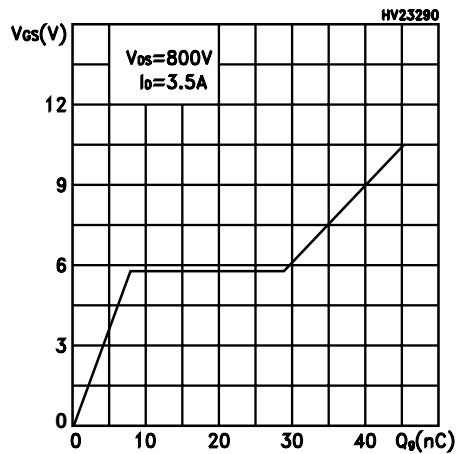
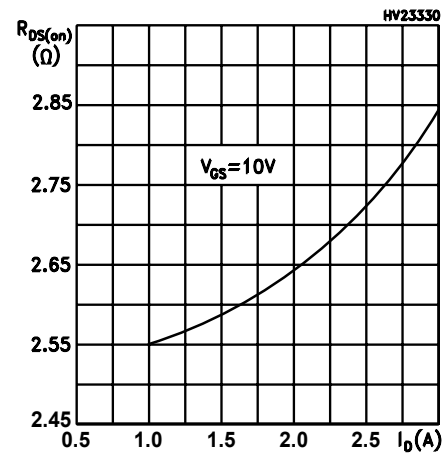
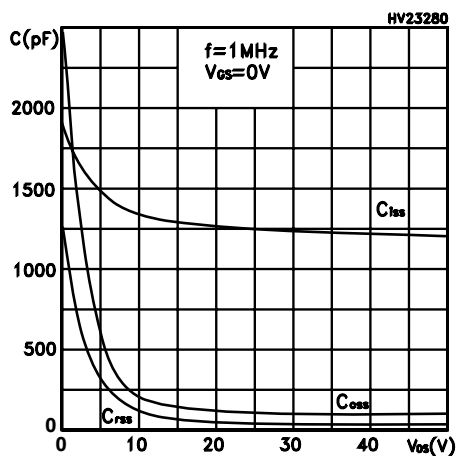
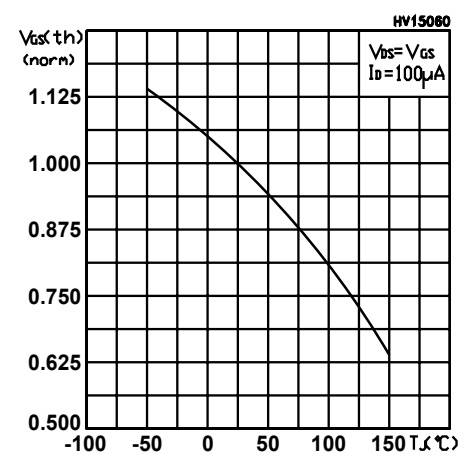
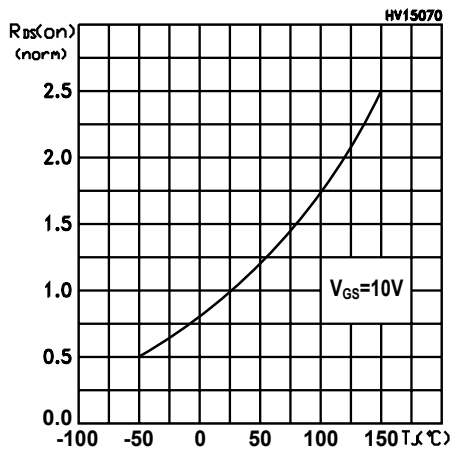
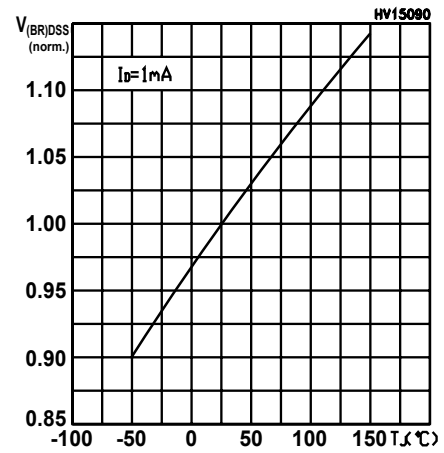
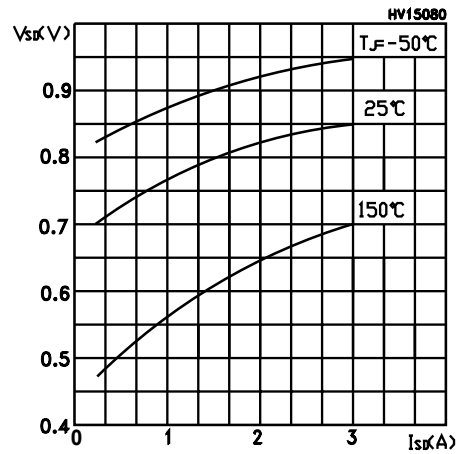
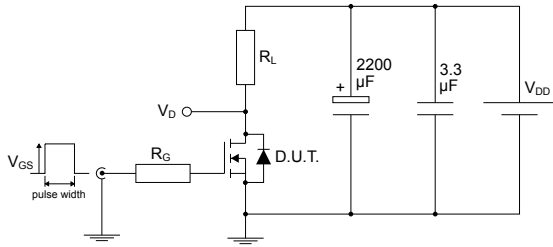
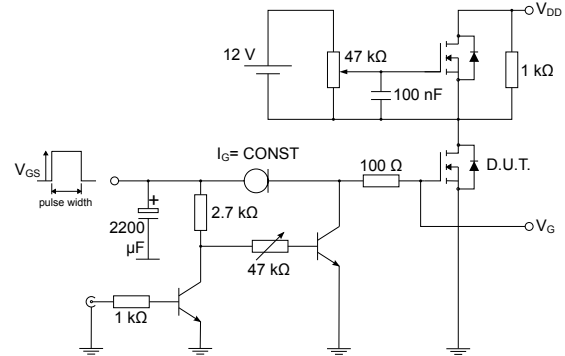
Figure 7. Typical output characteristics

Figure 8. Typical transfer characteristics

Figure 9. Gate charge vs gate-source voltage

Figure 10. Typical drain-source on-resistance

Figure 11. Capacitance variations

Figure 12. Normalized gate threshold vs temperature


Figure 13. Normalized on-resistance vs temperature

Figure 14. Normalized breakdown voltage vs temperature

Figure 15. Typical reverse diode forward characteristics


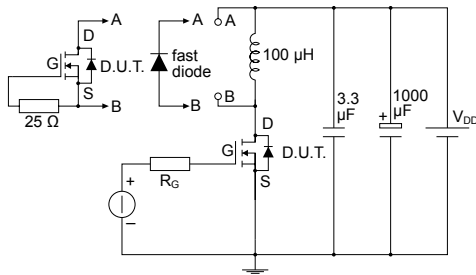
3 Test circuits

Figure 16. Test circuit for resistive load switching times


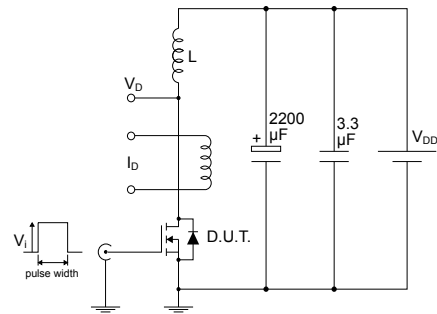
AM01468v1

Figure 17. Test circuit for gate charge behavior


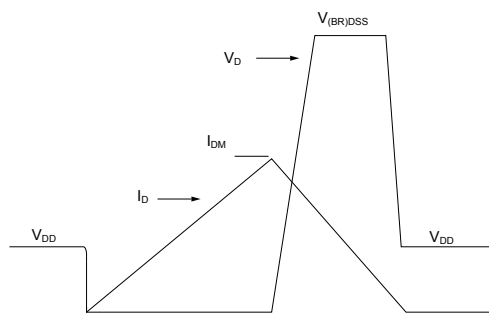
AM01469v1

Figure 18. Test circuit for inductive load switching and diode recovery times


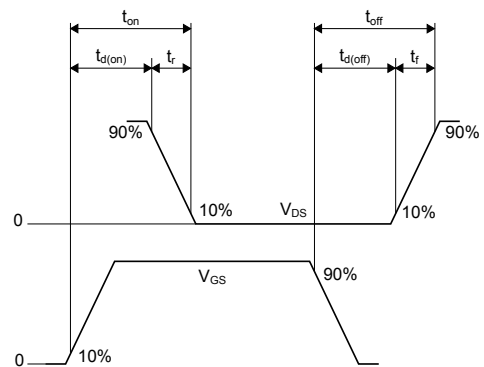
AM01470v1

Figure 19. Unclamped inductive load test circuit


AM01471v1

Figure 20. Unclamped inductive waveform


AM01472v1

Figure 21. Switching time waveform


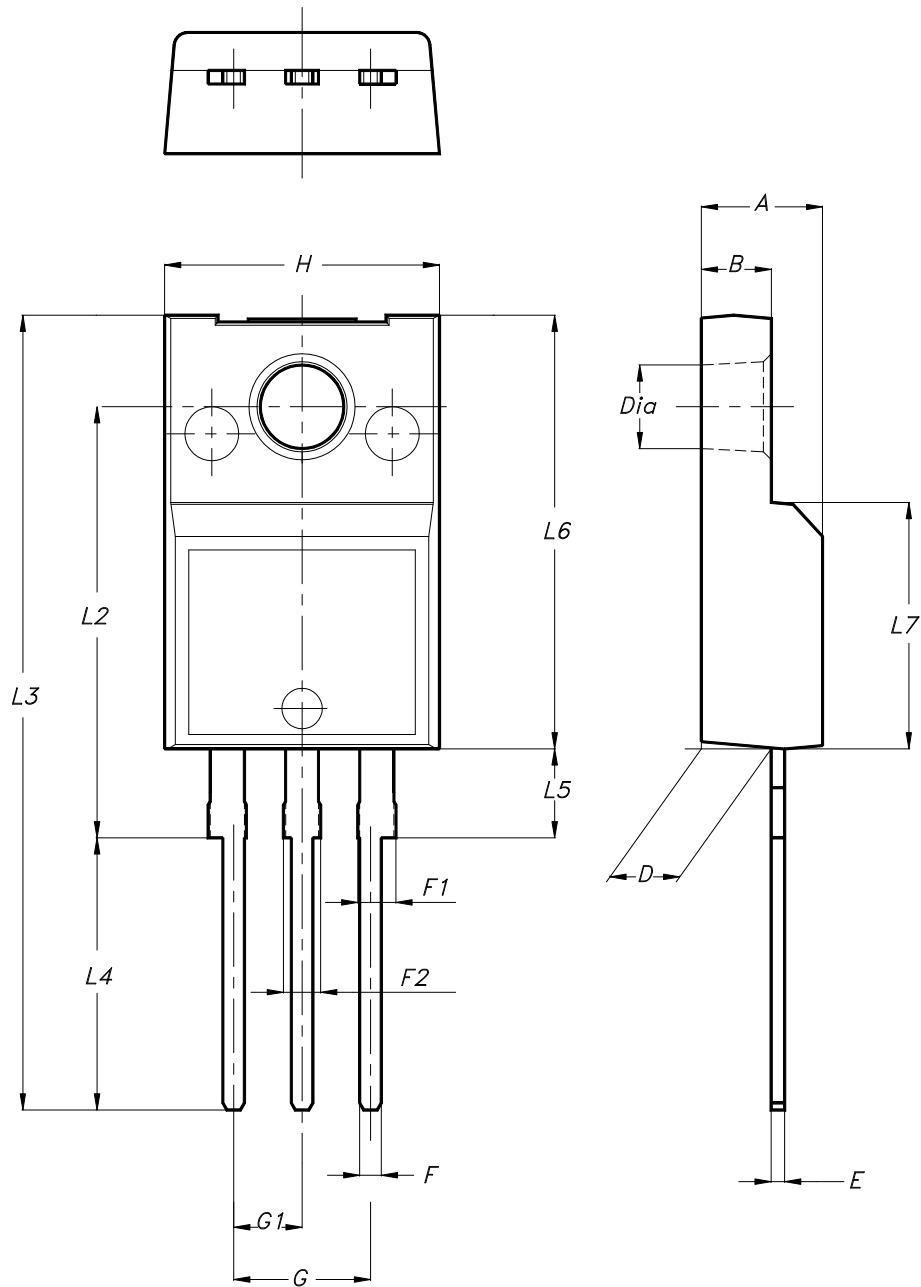
AM01473v1

4 Package information

To meet environmental requirements, ST offers these devices in different grades of **ECOPACK** packages, depending on their level of environmental compliance. ECOPACK specifications, grade definitions, and product status are available at: www.st.com. ECOPACK is an ST trademark.

4.1 TO-220FP type B package information

Figure 22. TO-220FP type B package outline



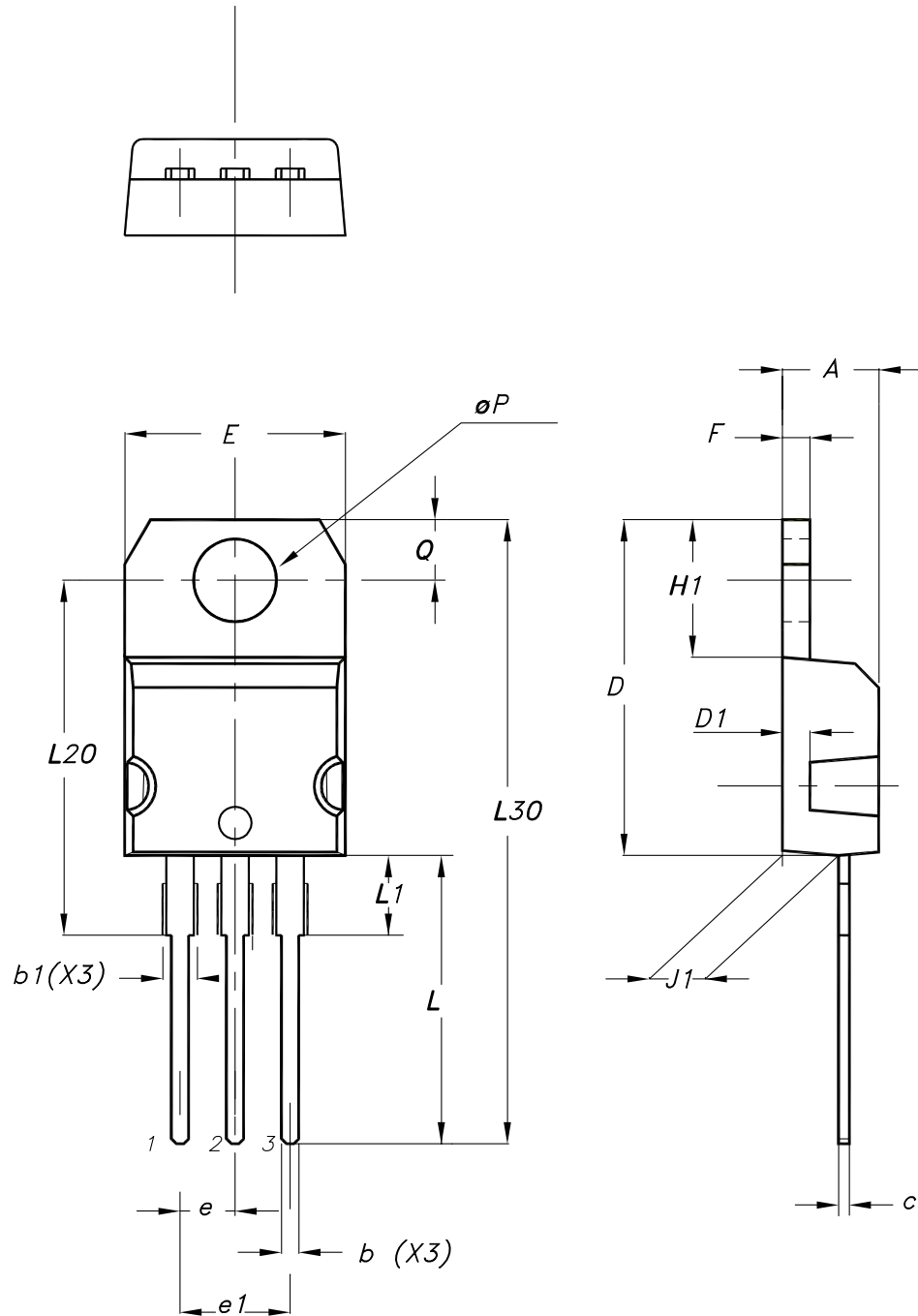
7012510_B_rev.14

Table 8. TO-220FP type B package mechanical data

Dim.	mm		
	Min.	Typ.	Max.
A	4.40		4.60
B	2.50		2.70
D	2.50		2.75
E	0.45		0.70
F	0.75		1.00
F1	1.15		1.70
F2	1.15		1.70
G	4.95		5.20
G1	2.40		2.70
H	10.00		10.40
L2		16.00	
L3	28.60		30.60
L4	9.80		10.60
L5	2.90		3.60
L6	15.90		16.40
L7	9.00		9.30
Dia	3.00		3.20

4.2 TO-220 type A package information

Figure 23. TO-220 type A package outline



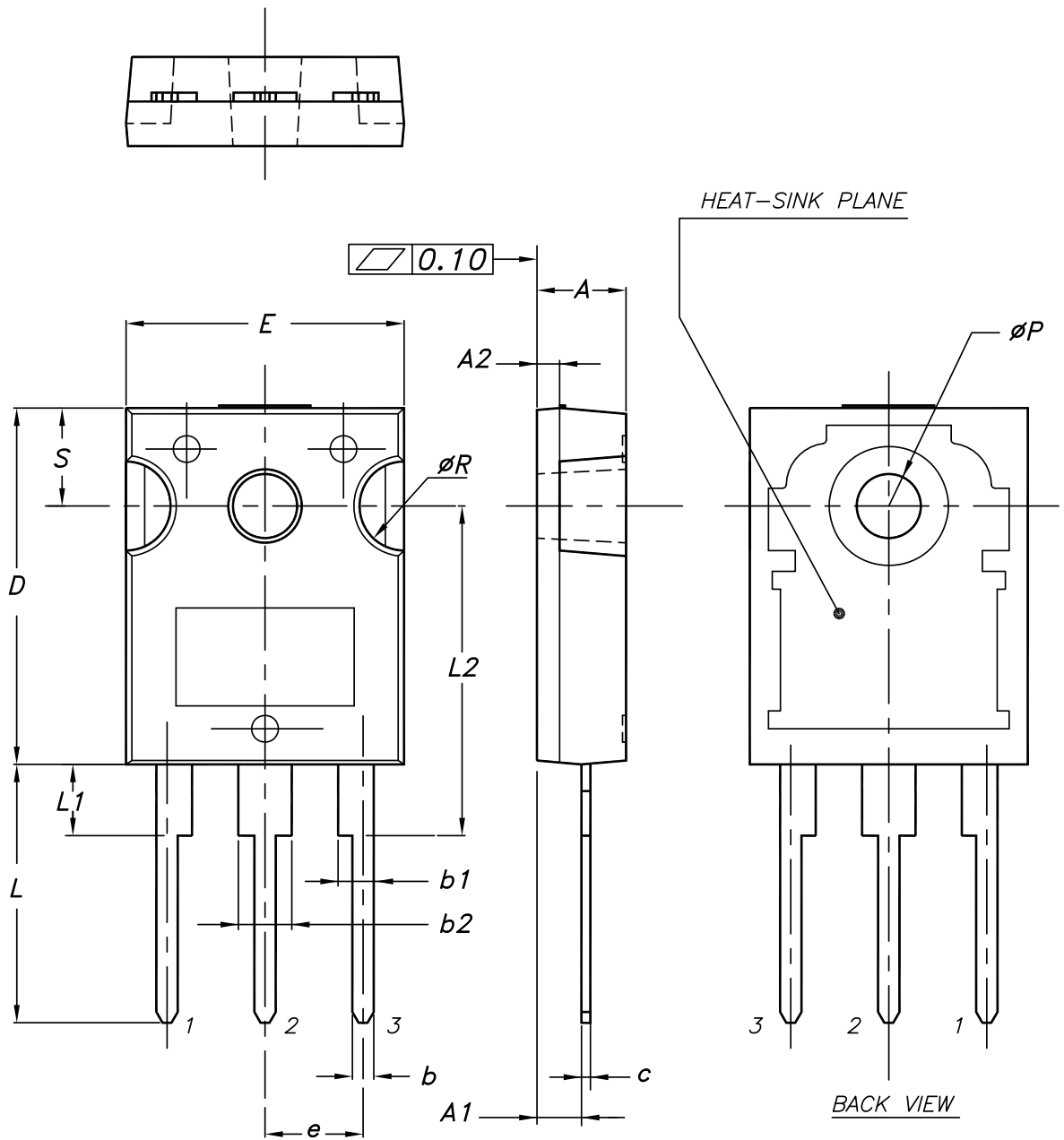
0015988_typeA_Rev_24

Table 9. TO-220 type A package mechanical data

Dim.	mm		
	Min.	Typ.	Max.
A	4.40		4.60
b	0.61		0.88
b1	1.14		1.55
c	0.48		0.70
D	15.25		15.75
D1		1.27	
E	10.00		10.40
e	2.40		2.70
e1	4.95		5.15
F	1.23		1.32
H1	6.20		6.60
J1	2.40		2.72
L	13.00		14.00
L1	3.50		3.93
L20		16.40	
L30		28.90	
øP	3.75		3.85
Q	2.65		2.95
Slug flatness		0.03	0.10

4.3 TO-247 package information

Figure 24. TO-247 package outline



0075325_11

Table 10. TO-247 package mechanical data

Dim.	mm		
	Min.	Typ.	Max.
A	4.85		5.15
A1	2.20		2.60
A2		1.27	
b	1.0		1.40
b1	2.0		2.40
b2	3.0		3.40
c	0.40		0.80
D	19.85		20.15
E	15.45		15.75
e	5.30	5.45	5.60
L	14.20		14.80
L1	3.70		4.30
L2		18.50	
ØP	3.55		3.65
ØR	4.50		5.50
S	5.30	5.50	5.70



5 Ordering information

Table 11. Order codes

Order codes	Marking	Package	Packing
STF5NK100Z	F5NK100Z	TO-220FP	Tube
STP5NK100Z	P5NK100Z	TO-220	
STW5NK100Z	W5NK100Z	TO-247	

Revision history

Table 12. Document revision history

Date	Version	Changes
12-Oct-2004	1	First release.
08-Sep-2005	2	Complete datasheet.
16-Dec-2005	3	Inserted ecopack indication.
16-Aug-2006	4	New template, no content change.
15-May-2009	5	Modified: <i>Section 2.1: Electrical characteristics (curves)</i> .
22-Jan-2026	6	Updated Section 4: Package information . Minor text changes.



Contents

1	Electrical ratings	2
2	Electrical characteristics	3
2.1	Electrical characteristics curves	5
3	Test circuits	8
4	Package information	9
4.1	TO-220FP type B package information	9
4.2	TO-220 type A package information	11
4.3	TO-247 package information	13
5	Ordering information	15
	Revision history	16



IMPORTANT NOTICE – READ CAREFULLY

STMicroelectronics NV and its subsidiaries (“ST”) reserve the right to make changes, corrections, enhancements, modifications, and improvements to ST products and/or to this document at any time without notice.

In the event of any conflict between the provisions of this document and the provisions of any contractual arrangement in force between the purchasers and ST, the provisions of such contractual arrangement shall prevail.

The purchasers should obtain the latest relevant information on ST products before placing orders. ST products are sold pursuant to ST’s terms and conditions of sale in place at the time of order acknowledgment.

The purchasers are solely responsible for the choice, selection, and use of ST products and ST assumes no liability for application assistance or the design of the purchasers’ products.

No license, express or implied, to any intellectual property right is granted by ST herein.

Resale of ST products with provisions different from the information set forth herein shall void any warranty granted by ST for such product.

If the purchasers identify an ST product that meets their functional and performance requirements but that is not designated for the purchasers’ market segment, the purchasers shall contact ST for more information.

ST and the ST logo are trademarks of ST. For additional information about ST trademarks, refer to www.st.com/trademarks. All other product or service names are the property of their respective owners.

Information in this document supersedes and replaces information previously supplied in any prior versions of this document.

© 2026 STMicroelectronics – All rights reserved