

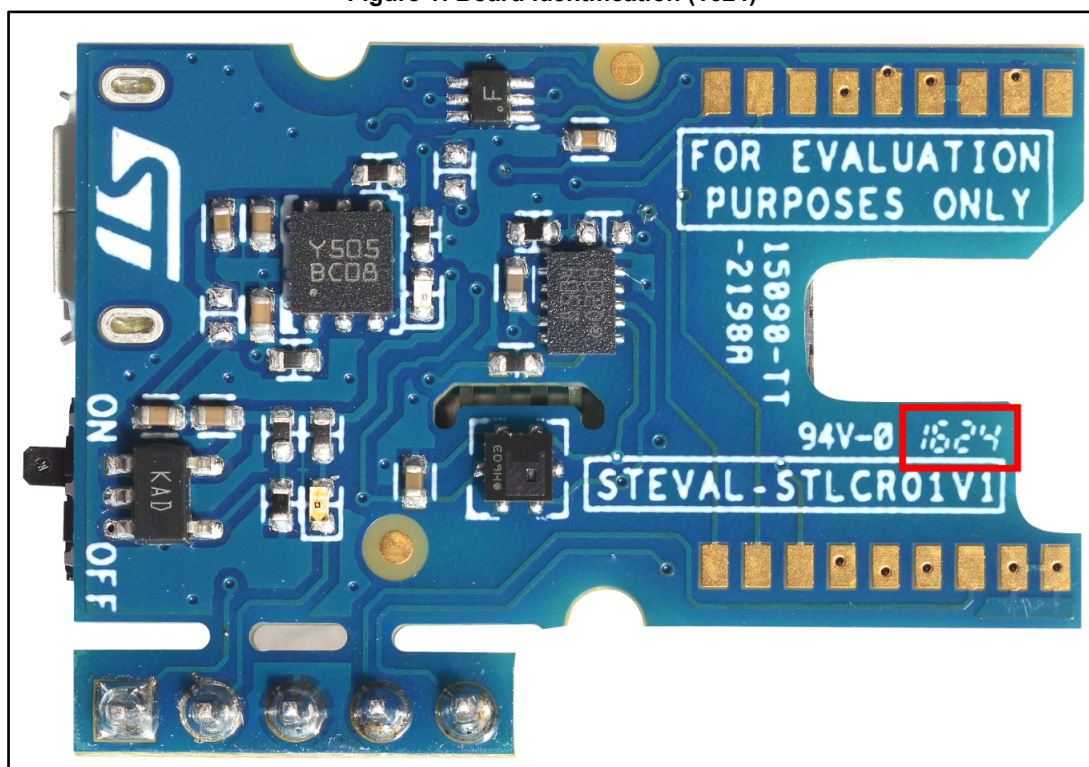
Board identification

This errata sheet applies to some samples of the STMicroelectronics STEVAL-STLKT01V1; see the below information for details.

Table 1: Board summary

Order code	Device Info
STEVAL-STLKT01V1	1624 (on the STEVAL-STLCR01V1 evaluation board)

Figure 1: Board identification (1624)



1 Limitation

1.1 Current sensing feature

1.1.1 Part number affected

Preliminary sample of STEVAL-STLKT01V1.

1.1.2 Description

The current sensing feature not available on the STEVAL-STLCR01V1 SensorTile Cradle production lot “1624” (see [Figure 1: "Board identification \(1624\)"](#)); the CG pin of the STC3115 is not connected properly in this lot.

1.1.3 Workaround

None.

2 Revision history

Table 2: Document revision history

Date	Revision	Changes
14-Oct-2016	1	Initial release
30-Jan-2017	2	Minor text changes

IMPORTANT NOTICE – PLEASE READ CAREFULLY

STMicroelectronics NV and its subsidiaries ("ST") reserve the right to make changes, corrections, enhancements, modifications, and improvements to ST products and/or to this document at any time without notice. Purchasers should obtain the latest relevant information on ST products before placing orders. ST products are sold pursuant to ST's terms and conditions of sale in place at the time of order acknowledgement.

Purchasers are solely responsible for the choice, selection, and use of ST products and ST assumes no liability for application assistance or the design of Purchasers' products.

No license, express or implied, to any intellectual property right is granted by ST herein.

Resale of ST products with provisions different from the information set forth herein shall void any warranty granted by ST for such product.

ST and the ST logo are trademarks of ST. All other product or service names are the property of their respective owners.

Information in this document supersedes and replaces information previously supplied in any prior versions of this document.

© 2017 STMicroelectronics – All rights reserved