



STM32N6 SERIES

The first high-performance STM32 MCU with AI acceleration



Redefining the performance of microcontrollers for industrial and consumer applications

The STM32N6, powered by the Arm® Cortex® -M55 running at 800 MHz, is the first STM32 MCU that embeds the ST Neural-ART accelerator™, an in-house developed NPU engineered for power efficient edge AI applications.

An H264 hardware encoder and the NeoChrom™ Accelerator for graphics allow the STM32N6 to be deployed in demanding, feature-rich products.

A high level of security is also provided; the STM32N6 is compliant with the latest security regulation standards.

KEY FEATURES AND BENEFITS

- Dedicated embedded Neural Processing Unit: 600 GOPS NPU, 3 TOPS/W power consumption
- Arm® Cortex®- M55 core: 1280 DMPIS/ 3360 CoreMark
- Available in 6 packages ranging from 169 to 264 pins
- Ideal for edge AI or graphics applications: 4.2 MB contiguous embedded RAM
- Extended multimedia capabilities: 2.5D graphics accelerator, H264 encoder, JPEG encoder/decoder
- Computer vision pipeline: MIPI CSI-2, camera I/F, Image signal processor
- Target SESIP3 and PSA Level 3 certifications

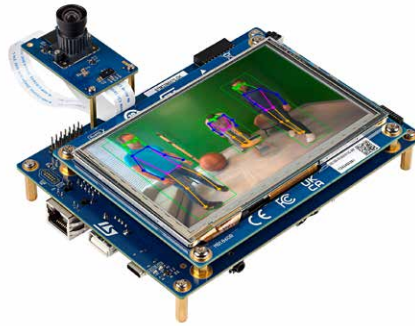
KEY APPLICATIONS

- Smart industry: visual anomaly detection
- Smart home: event detection
- Smart city: building automation
- Automotive: environment sensing
- Personal electronics: wearables
- Medical and healthcare: body measurements

STM32N6 BLOCK DIAGRAM

Embedded Memories	Arm® Cortex®-M55 800 MHz TrustZone® MVE	Connectivity
4.2 MB Contiguous RAM	ST Neural-ART accelerator 600 Gops	3x FDCAN
BOOT 128 KB		2x USB2.0 D/H HS + HS PHY
8 KB Backup RAM		1x UCPD controller
4 KB Debug RAM		3x I2C + 2x I3C (SDR)
External memory interfaces	System	5x UART, 5x USART
Hexa-SPI	96-bit unique ID	6x SPI (incl. 4x I2S)
Octo-SPI	Watchdogs	1x ULP UART
Flexible memory controller (PSRAM, SDRAM, NOR, NAND, TFT-LCD)	Cyclic redundancy	1x Gbit ethernet with TSN
2x SD/SDIO/MMC	Check (CRC)	Audio
Graphics	XTAL & internal osc	SPDIF-RX/TX
Chrom-ART™ accelerator	Security	2x SAI
Chrom-GRC™	Security boot	1x MDF (6 filters)
NeoChrom GPU accelerator	Secure RTC	1x ADF filter (with SAD)
LTDC/TFT-LCD Display controller	Analog true RNG	Analog
Multimedia	Crypto/Hash	Digital temperature sensor
H.264 encoder	Tampering	2x 12-bit ADC 5 MSPS
JPEG codec	OTP fuses 8 KB	Timers/Control
	Camera pipeline	2x 16-bit motor control PWM synchronized AC timers
	MIPI CSI-2, 2 lanes Camera I/F Parallel 16-bit with PSSI	12x 16-bit timers
	Image signal processor	5x 16-bit LP timers
		4x 32-bit advanced timers

HARDWARE TOOLS

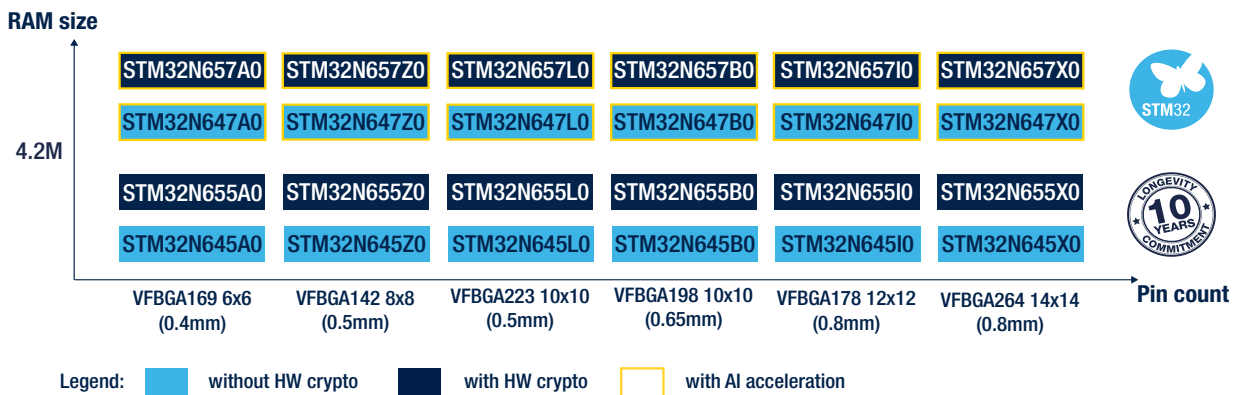


STM32N6570-DK*
Advanced prototyping
including AI
STLink v3, ST morpho, Arduino,
MIPI connector, USB 2.0, 1Gb
Ethernet, 32 MB HexaRAM,
Audio Jack, SD card.
*The board comes with
B-CAMS-IMX.



NUCLEO-N657X0-Q
Affordable prototyping
STLINK v3, ST morpho, Arduino,
MIPI CSI2 connector, USB 2.0,
1Gb Ethernet, Camera connector.

STM32N6 PORTFOLIO



START DEVELOPING NOW!

Jumpstart your application development by leveraging our STM32Cube ecosystem and the ST Edge AI Suite, your stepping stone enabling edge AI on MCUs.



© STMicroelectronics - December 2024 - Printed in the United Kingdom - All rights reserved
ST and the ST logo are registered and/or unregistered trademarks of STMicroelectronics International NV or its affiliates in the EU and/or elsewhere. In particular, ST and the ST logo are Registered in the US Patent and Trademark Office.
For additional information about ST trademarks, please refer to www.st.com/trademarks.
All other product or service names are the property of their respective owners.

