



2017 STM32Cube with System Workbench for STM32 workshop

Pre-workshop Installations

System Requirement

2

- Laptop
 - Administrative privileges needed for driver/software install and later during the workshop for compiling codes.
- Windows Operating System
 - XP/Vista/Win7/Win8
- **Please bring your own USB A to mini-B cable**



Step 1: Download the following files

3

Register & download the following softwares from the links provided. Refer to the installation procedures in the following pages.

- Software Development Environment:

- Workbench for STM32 installer:

www.openstm32.org/Downloading+the+System+Workbench+for+STM32+installer

Important: Select the right version for your operating system (**32bit or 64bit**), also required Java installed

- STLink USB driver (STSW-LINK009) : www.st.com/stlinkv2
- STM32 STLink Utility (STSW-LINK004) : www.st.com/stlinkv2
- STM32 Virtual COM Port Driver : www.st.com/web/en/catalog/tools/PF257938
- STM32 STM-Studio: www.st.com/content/st_com/en/products/development-tools/software-development-tools/stm32-software-development-tools/stm32-performance-and-debuggers/stm-studio-stm32.html

Step 1a: Download the following files

4

- STM32CubeMX: www.st.com/stm32cube

Important: The STM32CubeMX requires Java Run Time Environment 1.8 (JRE version 1.8.0_45 or newer) <https://java.com/download>

- STM32CubeL4 firmware package: www.st.com/content/st_com/en/products/embedded-software/mcus-embedded-software/stm32-embedded-software/stm32cube-embedded-software/stm32cubel4.html

Step 2: AC6 STM32 Installation

5

- We will be using AC6 System Workbench (SW4STM32) for in this session.
- **SW4STM32 for STMicroelectronics STM32L4 mcu**
 - Verify that your PC has installed Java
- AC6- Tools offers a complete approach, ready to work and expandable for future needs
 - A complete graphical, user friendly environment based on Eclipse
 - GCC-based full fledged toolchain, no size limitation
- The STM32 peripherals can be configured using STM32CubeMX and the resulting project then exported to AC6 SW4STM32

Step 2a: AC6 STM32 Download

6

- Download AC6 STM32:
www.openstm32.org
- Click on **download area** as shown in the diagram
- Select
install_sw4stm32_win64bits-v1.14.0.exe
- If you download earlier on just update with newest version

Step 1: Explore

- Search for Content
- Visit Wiki Pages
 - You can start from [Wiki Home](#)
- Read Blogs and Forums
- Look at the FAQs
- Install System Workbench for STM32 - Bare Metal Edition
 - Instructions are provided [here](#)
 - You can download the System Workbench for STM32 installer from the **download area**

Windows 7

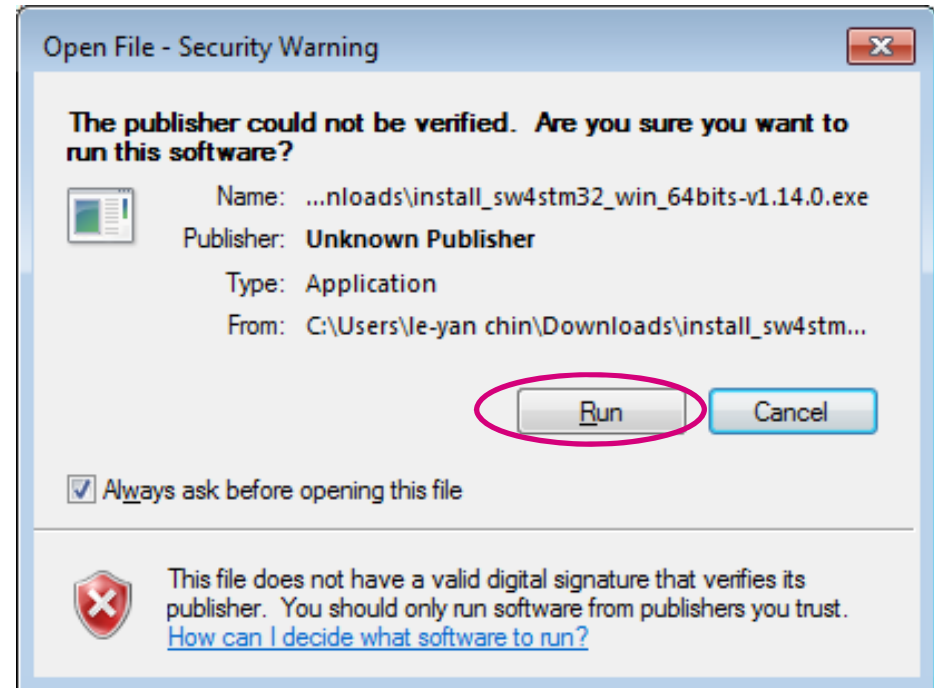
The Windows version is available for 32 and 64 bit systems. Note that we will need to install a device driver to communicate with the ST-Link debug probe, so you **must** select the installer that fits your system. Installing the 32 bit version on a 64 bit Windows system will **not** work. If you have problems downloading an executable file (.exe), try downloading and extracting the ZIP file.

- Latest Windows 7 64 bit installer (Version v1.14.0, updated on Friday, March 10, 2017 at 09:17:19 CET): **install_sw4stm32_win_64bits-v1.14.0.exe** or [install_sw4stm32_win_64bits-v1.14.0.zip](#)
 - The latest installer can always be retrieved from [install_sw4stm32_win_64bits-latest.exe](#) or [install_sw4stm32_win_64bits-latest.zip](#)
- Latest Windows 7 32 bit installer (Version v1.14.0, updated on Friday, March 10, 2017 at 09:17:21 CET): [install_sw4stm32_win_32bits-v1.14.0.exe](#) or [install_sw4stm32_win_32bits-v1.14.0.zip](#)
 - The latest installer can always be retrieved from [install_sw4stm32_win_32bits-latest.exe](#) or [install_sw4stm32_win_32bits-latest.zip](#)

Step 2b: AC6 STM32 Installation

7

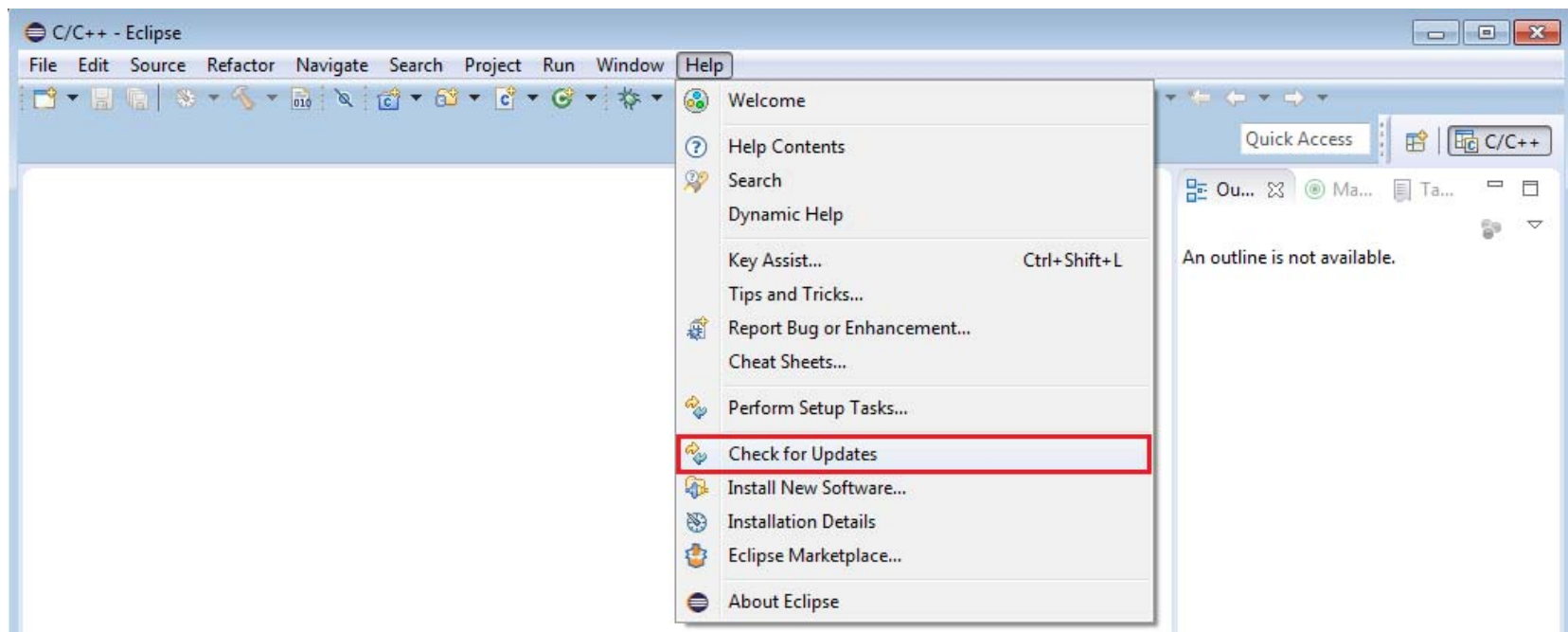
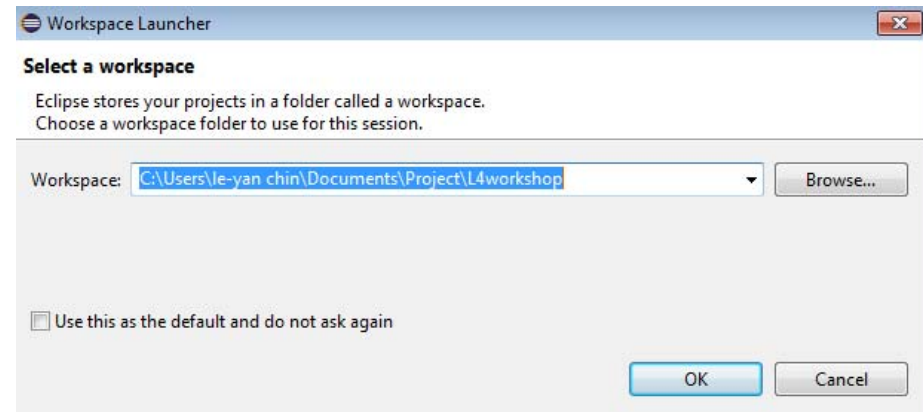
- Click **Run** to install **System Workbench for STM32** installer.
 - install_sw4stm32_win_64bits-v1.14.exe
- You may refer to the installation instructions from the AC6 website. [Click here.](#)
 - www.openstm32.org/Installing+System+Workbench+for+STM32+with+installer
 - Choose installation path (default: C:\Ac6\SystemWorkbench).
NOTE: Avoid paths with white spaces included like "C:\Program Files\..."



Step 2c: AC6 STM32 updates

8

- Open *System Workbench for STM32*
- Configure your own workspace as shown at right
- Check for any updates as shown at below diagram



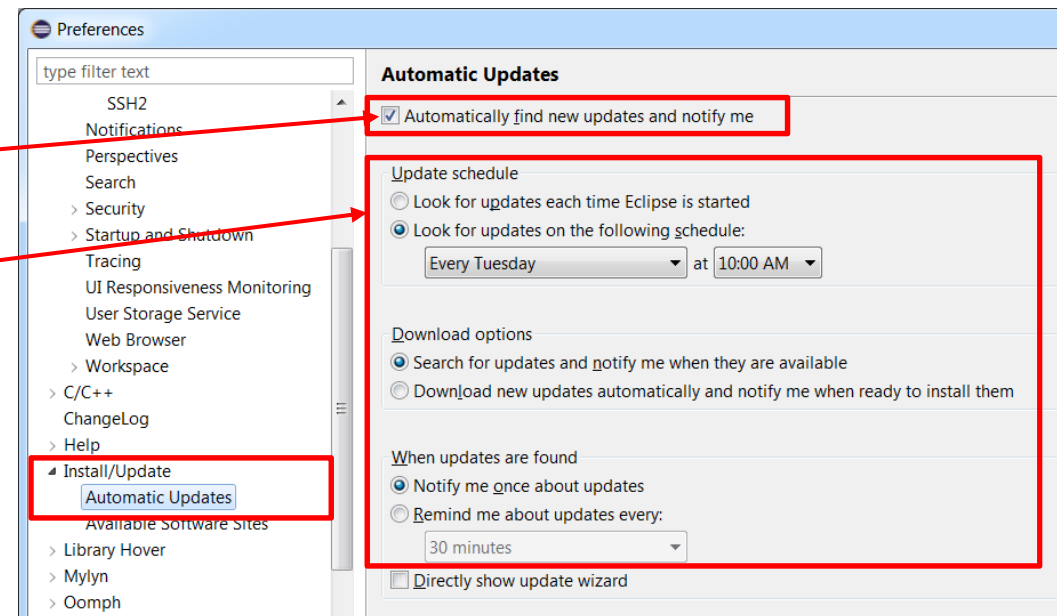
Step 2d: Update SW4STM32 to current version

configuration of automatic updates

9

In order to configure automatic finding new updates, please follow the procedure within SW4STM32:

1. Window -> Preferences
2. Install/Update -> Automatic Updates
3. Check “Automatically find new updates and notify me”
4. Configure Update schedule, download options and action to be done once updates are found accordingly



Checkpoint #1

verification of SW4STM32 installation

Help->About Eclipse

The screenshot illustrates the steps to verify the SW4STM32 installation in the Eclipse IDE. It shows the 'Help' menu, the 'About Eclipse' dialog, and the 'About Eclipse Features' dialog. A table in the 'About Eclipse Features' dialog lists installed features, with the 'MCU External Tools' feature highlighted. A blue arrow points from the 'MCU External Tools' entry to the SW4STM32 logo in the bottom right corner.

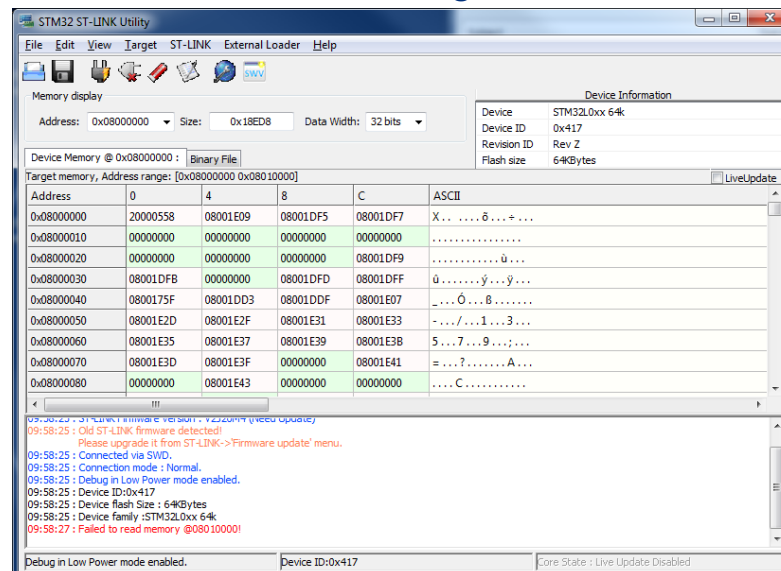
Provider	Feature Name	Version	Feature Id
Ac6	Ac6 C/C++ Debugging Tools ...	1.12.0.20170112...	fr.ac6.feature
Ac6	Ac6 C/C++ Embedded Develo...	1.13.1.20170120...	fr.ac6.feature
Ac6	Ac6 Linker Script Editor	1.11.1.20170112...	fr.ac6.feature
Ac6	MCU External Tools	1.13.1.20170120...	fr.ac6.feature
Ac6	MCU External Tools	1.12.1.20170112...	fr.ac6.feature
Ac6	MCU External Tools	1.13.0.20170112...	fr.ac6.feature
Ac6	System... Bench Document...	1.0.7.201701121...	fr.ac6.feature



Step 3: ST-Link USB driver And ST-Link Utility

11

- Download the ST-Link USB drivers from www.st.com/stlinkv2 (STSW-LINK009) and install the drivers.
- Also download the STM32 ST-Link Utility from www.st.com/stlinkv2 (STSW-LINK004) and install the utility.
 - The STM32 ST-Link Utility is an STM32 programming software using the ST-Link programmer/debugger tool.
 - Besides programming capability, the tool can also be used to verify the ST-Link driver installation and connection to the target MCU.



Step 4: STM32 Virtual COM Port Driver

12

- Download the STM32 Virtual COM Port Driver from:
<http://www.st.com/web/en/catalog/tools/PF257938>
- Open the readme.txt file and follow the instructions to install the driver.

- ☐ Download, install SW4STM32 and upgrade it to the newest version
- ☐ Download and install STM32CubeMX
- ☐ Download and install STM32L4-Cube Libraries
- ☐ Download and install STM32 STLink Utility
- ☐ Download and install ST-Link V2.1 drivers
- ☐ Download and install STMStudio
- ☐ Download and install terminal application (i.e. Termite or HTerm)



End