



life.augmented

STM32H723/733 STM32H725/735 STM32H730 Value lines MCUs for rich and complex applications

Marketing presentation





STM32 MCUs and MPUs portfolio



STM32MP1
4158 CoreMark
Up to 800 MHz Cortex-A7
209 MHz Cortex-M4



STM32F2 Up to 398 CoreMark 120 MHz Cortex-M3	STM32F4 Up to 608 CoreMark 180 MHz Cortex-M4	STM32F7 1082 CoreMark 216 MHz Cortex-M7	STM32H7 Up to 3224 CoreMark Up to 550 MHz Cortex -M7 240 MHz Cortex -M4
--	--	---	---



STM32F0 106 CoreMark 48 MHz Cortex-M0	STM32G0 142 CoreMark 64 MHz Cortex-M0+	STM32F1 177 CoreMark 72 MHz Cortex-M3
	STM32F3 245 CoreMark 72 MHz Cortex-M4	STM32G4 569 CoreMark 170 MHz Cortex-M4

Mixed-signal MCUs



STM32L0 75 CoreMark 32 MHz Cortex-M0+	STM32L1 93 CoreMark 32 MHz Cortex-M3	STM32L4 273 CoreMark 80 MHz Cortex-M4	STM32L4+ 409 CoreMark 120 MHz Cortex-M4	STM32L5 443 CoreMark 110 MHz Cortex-M33	STM32U5 651 CoreMark 160 MHz Cortex-M33
---	--	---	---	---	--



	STM32WL 162 CoreMark 48 MHz Cortex-M4 48 MHz Cortex-M0+	STM32WB 216 CoreMark 64 MHz Cortex-M4 32 MHz Cortex-M0+
--	---	---



life.augmented

“If only

I could address the design challenges
in factory automation systems



STM32H7 single core - Building a factory automation product



High performance for optimized control or HMI

Large embedded memory and external memory support

- Up to 1 MB of Flash & up to 564 KB of SRAM
- 2 x Octo-SPI interface

Extended connectivity with Ethernet MAC, 3x FD-CAN and USB

Fast 16-bit and 12-Bit ADC, and extended Temp range support up to 125 °C

SIL ready enabled by native hardware features



life.augmented

“If only

I could run deeply embedded
applications with advanced
performance at minimum cost



STM32H7 - Creating a smartphone-like graphic UI for your embedded device



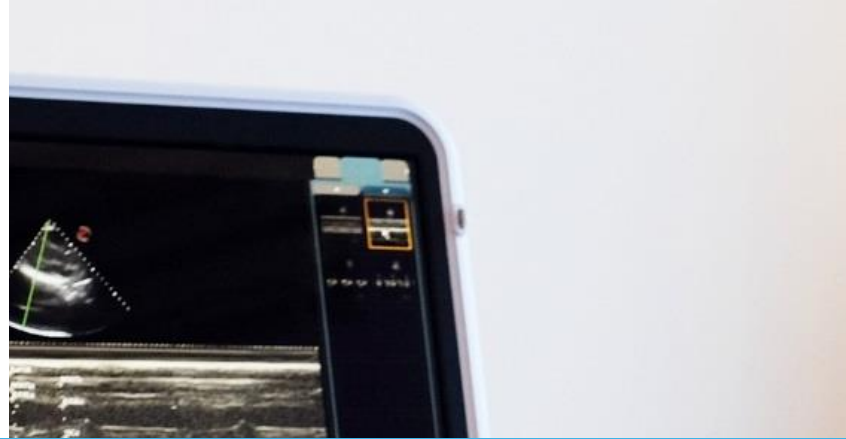
High performance STM32 with Arm Cortex-M7 up to 550 MHz

TFT LCD controller and Graphic hardware accelerations for better effects, transitions and fluidity

Multiple high-speed memory interfaces

Graphic support from 68-pin QFN packages (improved cost effectiveness) up to UFBGA / LQFP176

TouchGFX free graphic tool suite for stunning HMI and simplified development



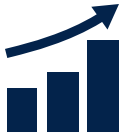
STM32H7





STM32H723/725 lines & STM32H730 Value line

New product lines expanding the STM32 portfolio



New Performance Record
Up to 2778 CoreMark (Cortex[®]-M7 @550MHz)



Flexible architecture for industrial, security or AI applications
Accelerated graphics, fast data transfer, advanced peripherals

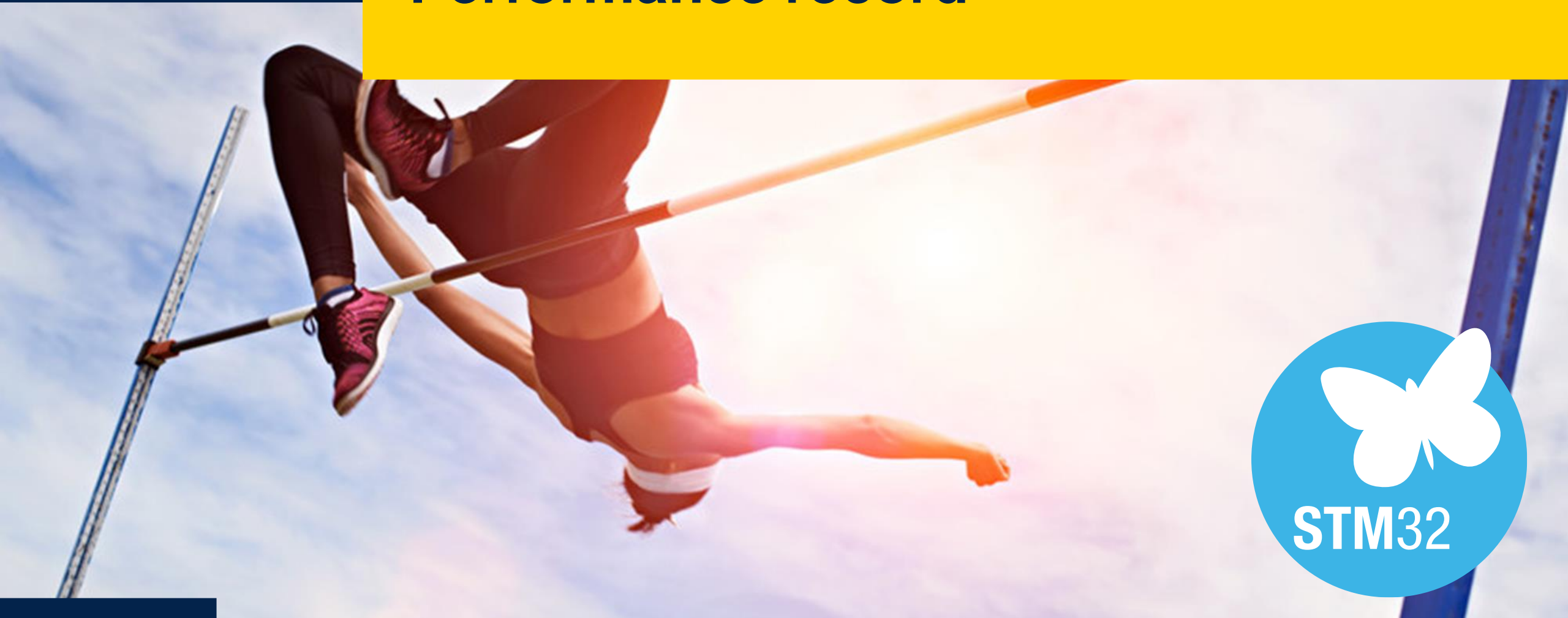


Advanced security features
Crypto Hash, Cortex[®]-M7 Security services



Rich eco-system to speed-up your design
SW tools, HW boards, community and partners

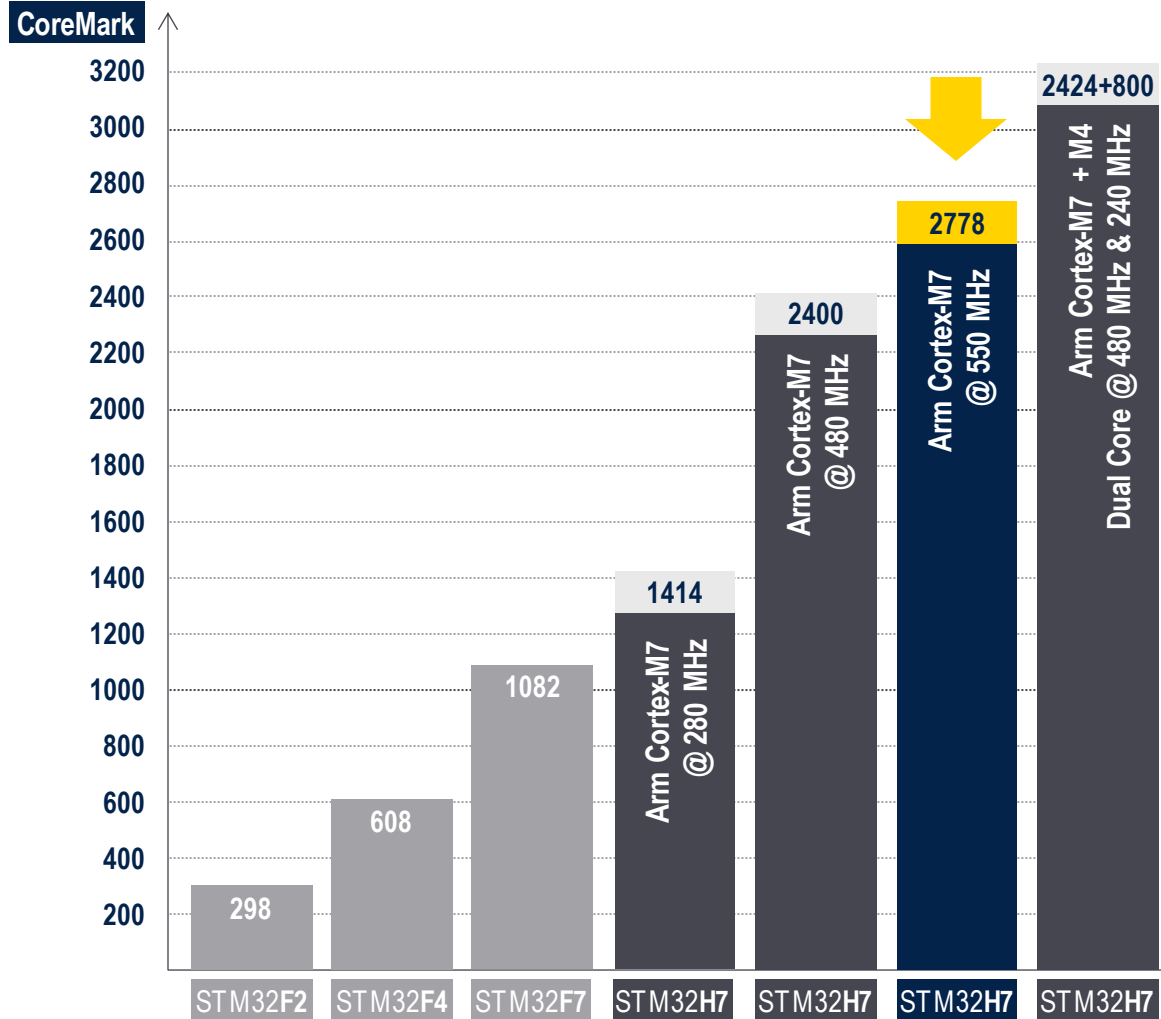
Performance record





STM32H723/725 lines & STM32H730 Value line

High performance range

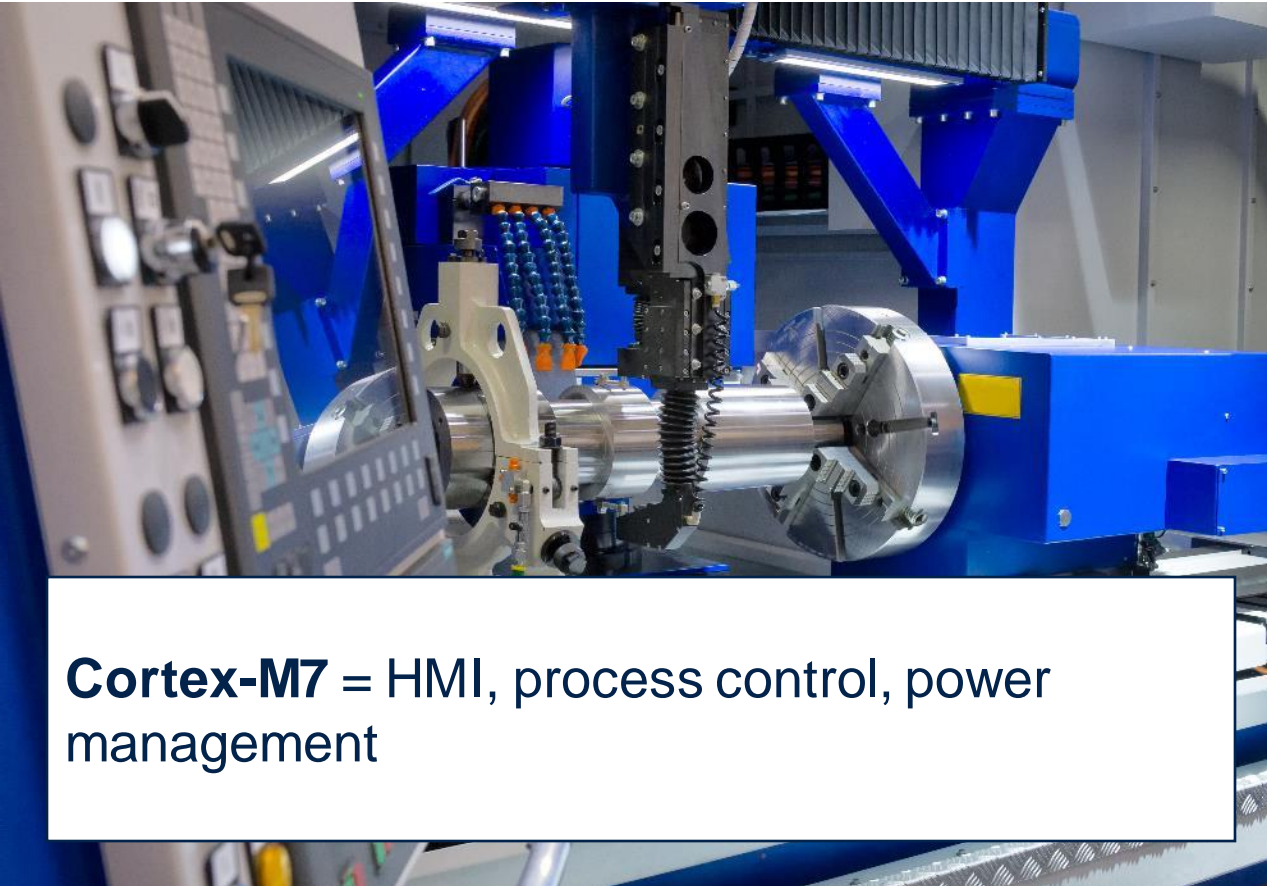


Arm® Cortex® -M7 up to 550 MHz

Most powerful Cortex core with double precision FPU, MPU, advanced DSP and L1 cache

Single Core Architecture Approach for performance and advanced HMI

Factory automation



Cortex-M7 = HMI, process control, power management

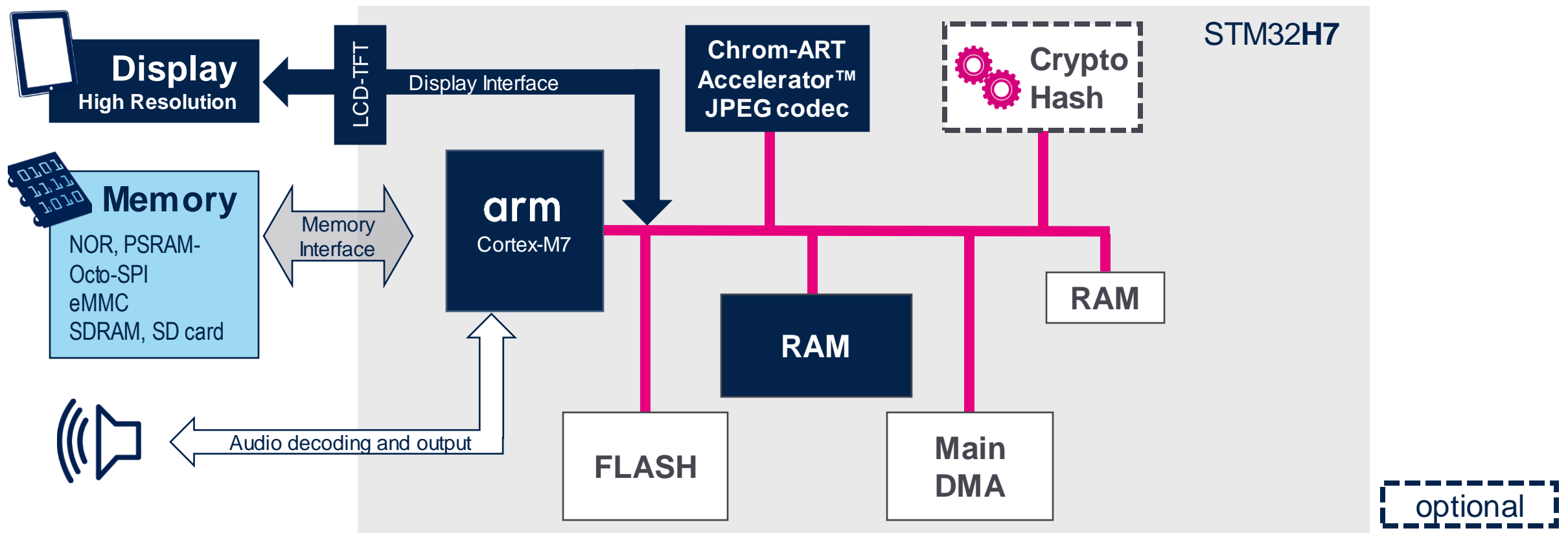
Connectivity & security



Cortex-M7 = Alarm panel, Wireless Modules

Create a rich human machine interface

Cortex-M7 - handling audio and rich HMI, Real Time control tasks





Powerful core supported by a powerful architecture

Display nice graphic

The Chrom-ART Accelerator™ and LCD-TFT controller offload the CPU by more than 90%

Transfer data efficiently across peripherals

The Main DMA takes care of the most complex schemes between memories and peripherals with **up to 16 channels to offload the CPU**

STM32H7

Manage security

Use dedicated **cryptography** and **Hashing** HW acceleration to offload the CPU by more than 90%

Data acquisition with multiple fast ADCs

2 x 16-bit ADC and 12-bit ADC for real time control of application in factory automation or appliance applications

STM32H7 line-up





Extensive STM32H7 portfolio

 **Dual-core
Line**

 **Single-core
Line**

 **Value Line**

STM32H745/755
480+240 MHz **SMPS**
1027 + 300 DMIPS
RAM 1 MB
Flash up to 2 MB

STM32H747/757
480+240 MHz **SMPS**
1027 + 300 DMIPS
RAM 1 MB
Flash up to 2 MB

NEW

 Extended temperature
range 125 °C ambient

STM32H7A3/B3
280 MHz **LDO**
599 DMIPS
RAM 1.4 MB
Flash up to 2 MB

STM32H742
480 MHz **LDO**
1027 DMIPS
RAM 692 KB
Flash up to 2 MB

STM32H743/753
480 MHz **LDO**
1027 DMIPS
RAM 1 MB
Flash up to 2 MB

STM32H723/733
550 MHz **LDO**
1177 DMIPS
RAM 564 KB
Flash up to 1 MB

STM32H725/735
550 MHz **SMPS**
1177 DMIPS
RAM 564 KB
Flash up to 1 MB

STM32H7B0
280 MHz **LDO**
599 DMIPS
RAM 1.4 MB
Flash 128 KB

STM32H750
480 MHz **LDO**
1027 DMIPS
RAM 1 MB
Flash 128 KB

STM32H730
550 MHz **LDO**
1177 DMIPS
RAM 564 KB
Flash 128 KB

STM32H730Q
550 MHz **SMPS**
1177 DMIPS
RAM 564 KB
Flash 128 KB

Arm® Cortex® core

Cortex-M7

Cortex-M7 & -M4



Tailored for your needs

CORE, MEMORIES AND ACCELERATION

- Single-core Cortex-M7 up to 550 MHz
- 32-Kbyte data and 32-Kbyte instruction cache
- Flash and RAM acceleration
- SP-FPU and DP-FPU
- 4 x DMA
- Mathematics

CONNECTIVITY

- 1 x USB2.0 OTG FS/HS with embedded FS PHY
- 2 x SDMMC
- USART, UART, SPI, PC
- 3 x CAN (2 x FD and 1 x TT)
- HDMI-CEC
- FMC, 2 x Octo-SPI
- Camera I/F

AUDIO

- 3 x PS + audio PLL
- 2 x SAI
- 2 x 12-bit DAC
- SPDIF-RX

GRAPHIC

- Chrom-ART Accelerator™

OTHER

- Crypto/Hash option¹
- Security services option
- TRNG
- DFSDM
- 16- and 32-bit timers
- 2 x ADCs with up to 16-bit resolution (up to 3.6 MSPS)
- 1 x ADC with up to 12-bit resolution (up to 5 MSPS)
- Analog (compt,AOP)
- Voltage range 1.62 to 3.6 V (except 100-pin and VFQFPN68 packages : 1.71 to 3.6 V)
- Multi-power domains
- -40°C up to 85°C ambient
- -40°C up to 125°C ambient²

Product line	f _{max} (MHz)	Dual-Bank Flash memory (bytes)	RAM (bytes)	Octo-SPI & OT - FDEC :	Ethernet	Graphic	Power supply	Stop mode (typical) / RAM reten - tion
Single-core lines								
STM32H725/735 ³	550	Up to 1 Mbyte	564KB (incl.128K DTCM, 432KB Syst + 4K bckup)	•	•	TFT-LCD	SMPS ⁵ + LDO	200 µA / 564KB
STM32H723/733 ³	550	Up to 1 Mbyte	564KB (incl.128K DTCM, 432KB Syst + 4K bckup)	•	•	TFT-LCD	LDO	520 µA / 564KB
Value line								
STM32H730	550	128 Kbytes	564KB (incl.128K DTCM, 432KB Syst + 4K bckup)	•	•	TFT-LCD	SMPS ⁴ + LDO	200 µA / 564KB 520 µA / 564KB

- High performance up to 550 MHz in Single core Arm® Cortex® -M7
- 128 KB to 1 MB embedded Flash
- 564 KB RAM
- Security features (Boot, Tamper ...), OTFDEC on external memories, Crypto/Hash and security services (optional)
- Graphic support with TFT-LCD controller and Chrom-ART Accelerator™
- 35 communication peripherals
- 16-bit ADC up to 3.6 MSPS, up to 5 Msps in 12-bit, Comparators, Op Amp
- TT-FD-CAN and FD-CAN
- Low-Power Timers
- LDO and SMPS option
- Up to 140 °C junction temperature / 125 °C ambient (optional)
- Available in Value Line version

Notes :
1. Optional - dedicated CPN, STM32H733 and STM32H735 for the Crypto Variants
2. 125 °C ambient / 140 °C junction. Dedicated part numbers on STM32H725/H735
3. Crypto and Security services on CPN : STM32H733, STM32H735 and STM32H730
4. SMPS available only on STM32H730Q CPN
5. SMPS only on the QFN68 variant (no LDO)



Example of block diagram STM32H735xG



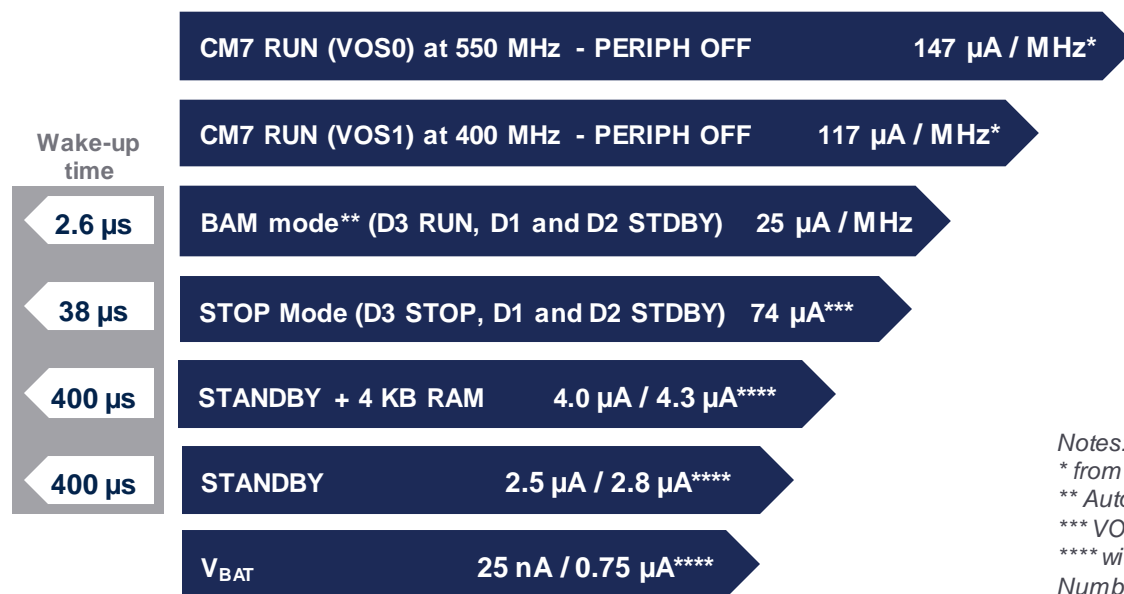
- STM32H735 is the crypto variant of the STM32H725
- It offers the Security services (SFI and SB-SFU) for secure programming or secure firmware update
- LDO and SMPS
- Optional 125 °C ambient Temp support / Max 140 °C junction temperature(*)

(*) : on dedicated part numbers



STM32H723/725/730Q lines SMPS mode

Typical 25°C data in RUN and LOW POWER modes



Typ @ V_{DD} = 3.3 V, @ 25 °C

Notes:

* from Flash (Cache ON and Reg. ON)

** Autonomous Mode - run at 64MHz, I2C4 and BDMA

*** VOS5; Flash OFF, no IWDG

**** without and with RTC. At 3V

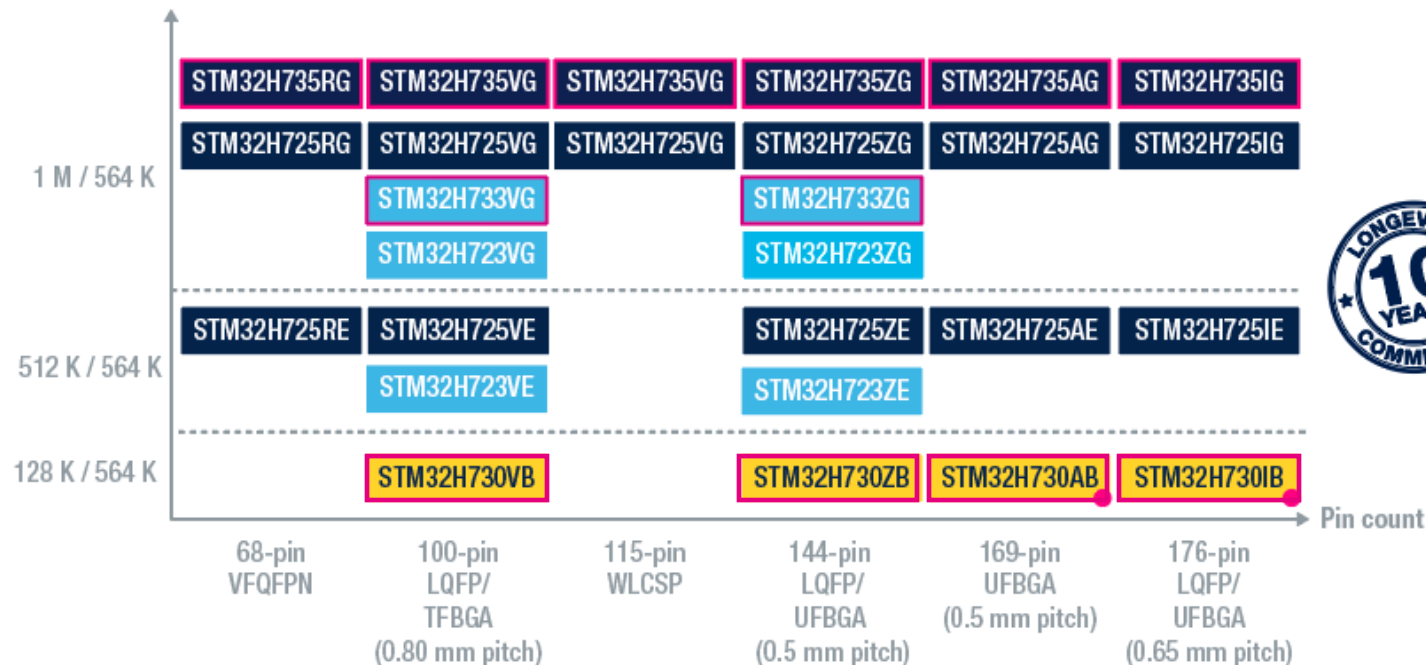
Numbers are typical. More details available in product Sheet available at www.st.com



STM32H7 Single core STM32H723, STM32H725 & STM32H730

ST's new STM32H7 microcontrollers combine the high performance of a single core with/and rich feature integration

Flash memory size / RAM size (bytes)



- System integration
- Advanced connectivity and control
- Security services

Legend:

- STM32H725/735 lines
- STM32H723/733 lines
- STM32H730 Value line
- with HW crypto/hash
- with internal SMPS



www.st.com/STM32H7

- ▶ STM32H723/733 [here](#)
- ▶ STM32H725/735 [here](#)
- ▶ STM32H730 [here](#)
- ▶ ST blog article [here](#)

Performance and smart architecture are yours to innovate





Industrial and health & wellness DNA

Industrial

- Error Code Correction on all Flash and RAM
- Large choice of packages
- Advanced digital and analog
(16-bit and 12-bit ADC, Op-Amp, Ethernet, CANFD...)
- High temperature -40°C up to 140°C junction temperature (125°C ambient)

Health & Wellness



Industrial and health & wellness DNA

Industrial

- **Inverters**
Advanced timers and analog peripherals
- **Communication gateway**
Rich connectivity
- **Human Machine Interface**
Chrom-ART Accelerator and display interfaces for TFT and MIPI-DSI

Health & Wellness

- **Health and wellness**
Chrom-ART Accelerator™ and display interfaces for TFT displays
- **Individual assistance** (hearing, respiratory)
Advanced timers and analog
- **Measurements and Data logger**
Advanced Analog



Consumer DNA

Consumer

- Small packages
- Power efficiency and high performance
- Advanced audio and graphic
- High-speed peripherals
- Large expandable memories to support ever increasing communication protocols





Consumer DNA

Consumer

- **IoT gateway**
Large memory and rich communication peripherals
- **Access control**
Chrom-ART Accelerator™ and display interfaces for TFT
- **Drones**
High processing architecture, advanced timers and analog peripherals, small packages

Secure your production and your applications



STM32Trust on STM32H7 Series



www.st.com/stm32trust

Global security
ecosystem and services

STM32 concept
Support customer's
Secure Boot / Root Of Trust

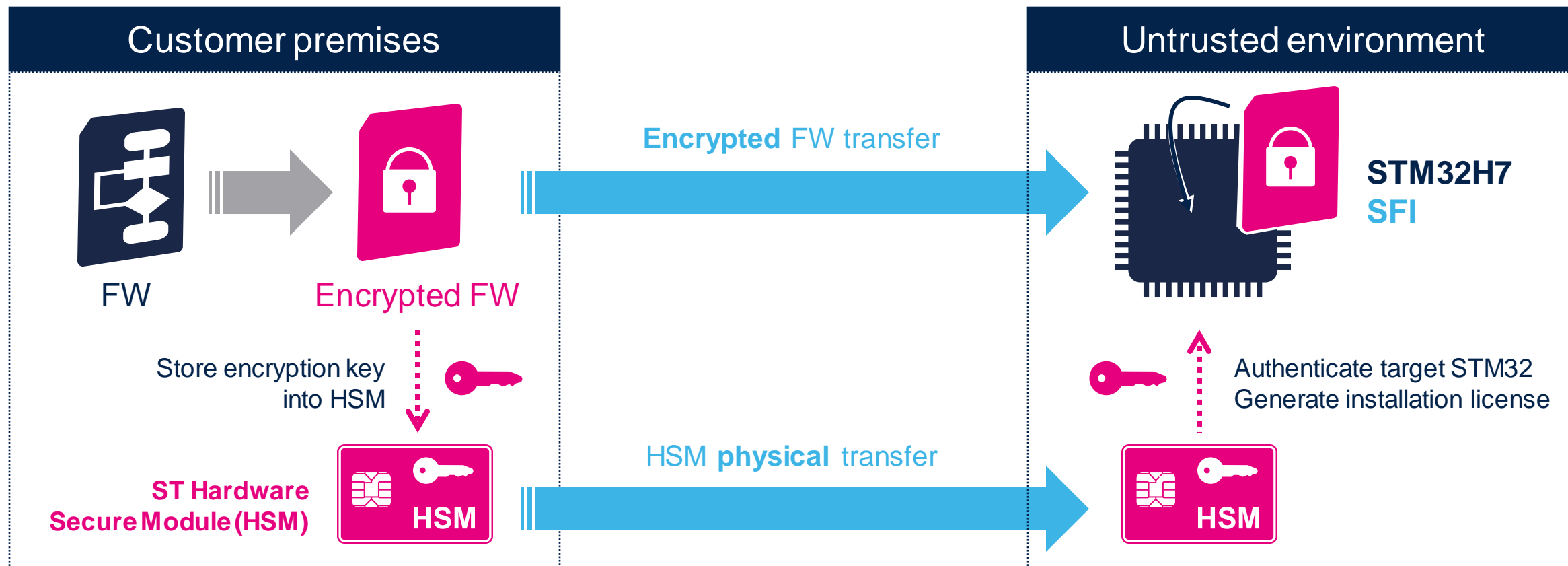
SFI
A Secure Installer of
Secure Boot / Root Of Trust

SBSFU
A reference SW package for **FW Update**
and **Secure Boot / Root Of Trust**

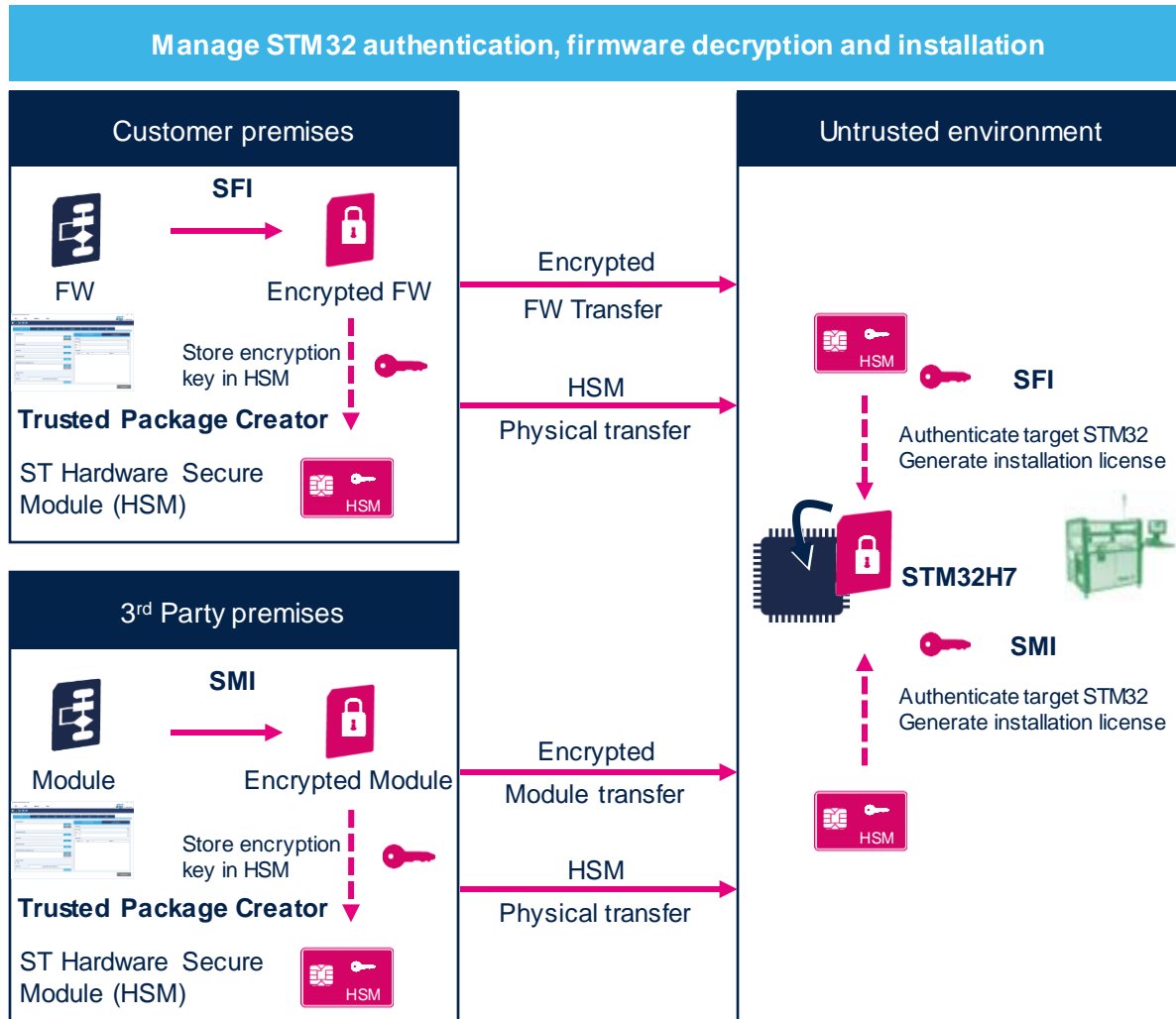


Secure your production flow with secure firmware install (SFI*)

Manage STM32 authentication, firmware decryption and installation



Embedded Secure Firmware Install - SFI



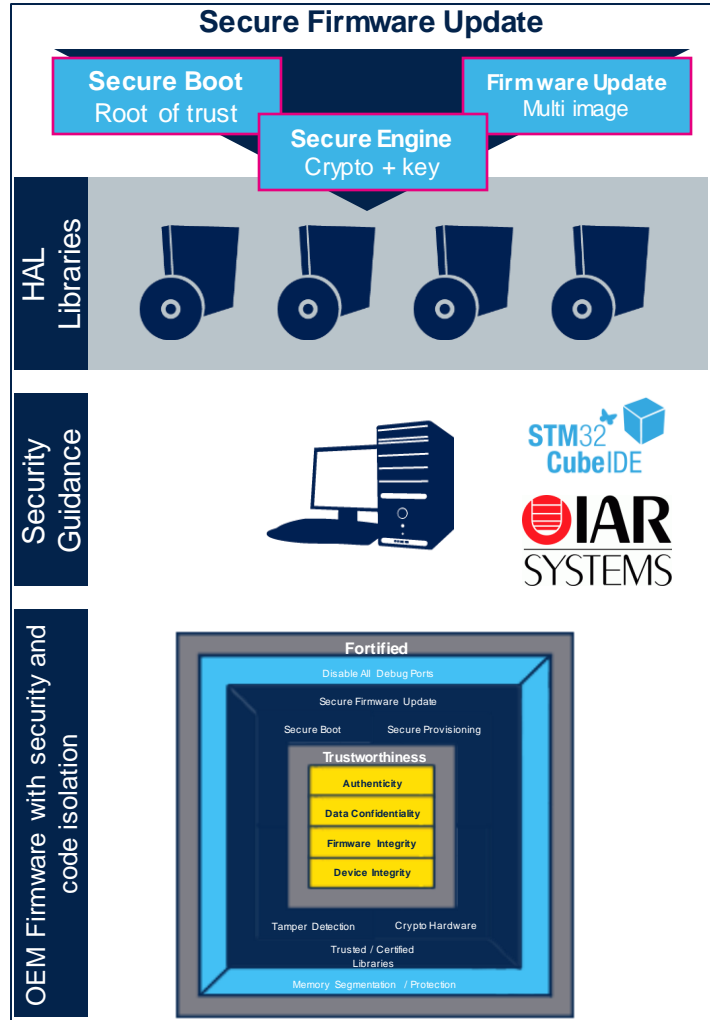
Secure Loader
embedded services
provisioned by ST
→ Mass Market
approach

ST ecosystem
with
Encryption, HSM and
programming tools

Firmware cloning
protection on the first
installation
via
UART / SPI / USB

Protect 3rd party
Software IP
(SMI)

Secure Boot Secure FW Update - SBSFU



Reference library source code for IAP

Demonstrate SW modules for:

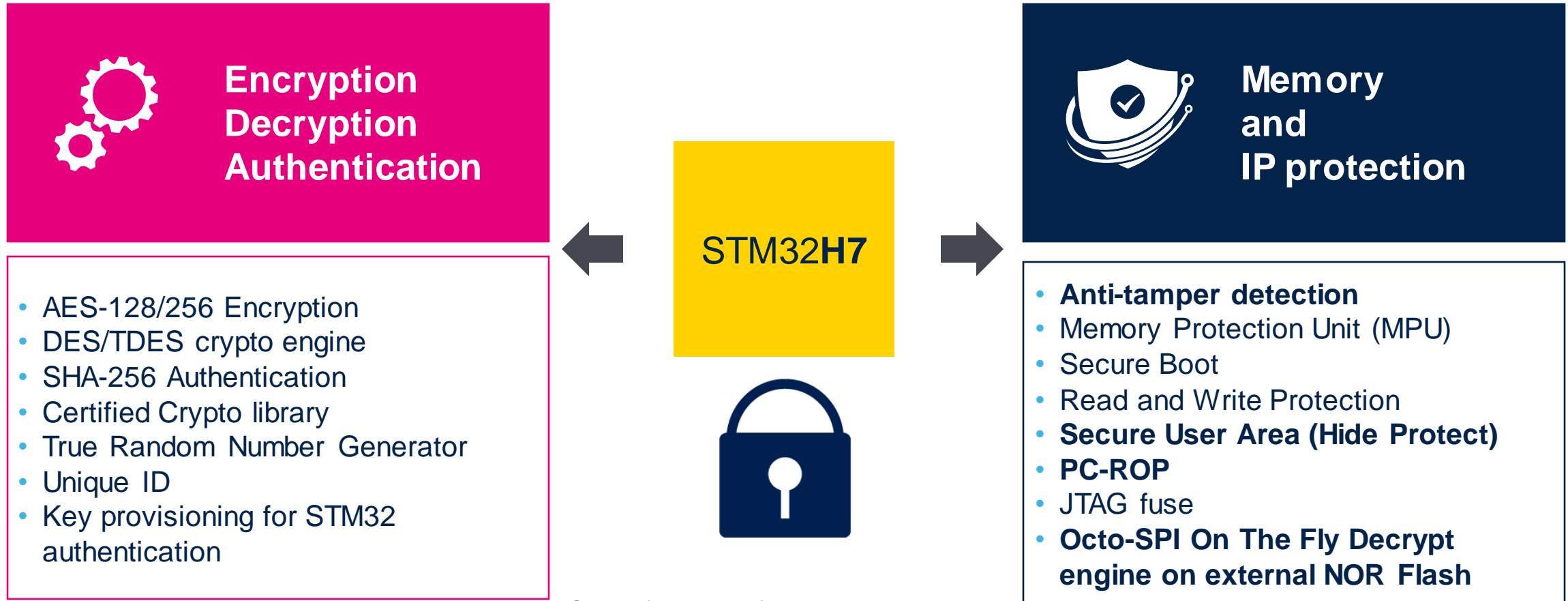
- Secure Boot
- Secure Engine for Crypto and key
- Firmware Update image management

Ensure authentication and secure programming of in the field products

Reference implementation of STM32H7 hardware memory protections



A full set of security



Some of the above features are optional and require to procure dedicated part numbers.
Please refer to product specification

STM32H7 detailed security functions

STM32Trust Security function	CM7 CM7/CM4 STM32H72x STM32H74x STM32H7Ax	CM7 Crypto CM7/CM4 Crypto STM32H75x	CM7 STM32H73x STM32H7Bx
Secure Boot Secure User Memory for SBSFU software package		•	•
Secure Install/Update By SBSFU software package		•	•
Secure Storage for Boot only		•	•
Access Debug Read Out Protection RDPL0/1/2	•	•	•
Resource Isolation Memory Protection Unit	•	•	•
Secure Execution By SBSFU software package		•	•
Crypto Engine Hardware crypto accelerator	TRNG Fips	AES / DES / SHA / TRNG Fips	AES / DES / SHA / TRNG Fips
Crypto Engine On-the-fly decryption from external memories			•
SWIP Protection/Collaborative Dev Secure Module Install (SMI)		•	•
Secure Manufacturing Secure Firmware Install (SFI)		•	•

Note: a crypto library is available on request for both crypto and non crypto parts.

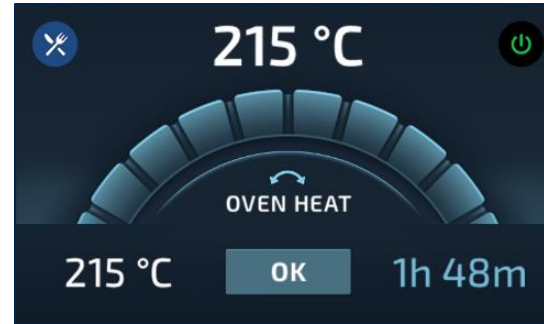
Solutions for STM32H7 Graphics



Enhance your product with great graphic



 Smart home
[Watch video](#)



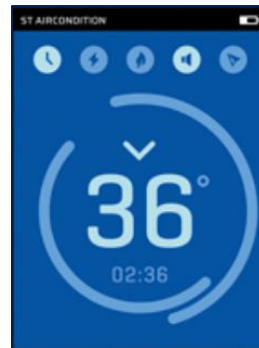
 Kitchen appliances
[Watch video](#)



 Industrial
[Watch video](#)



 Smart home
[Watch video](#)



 Smart home
Watch video

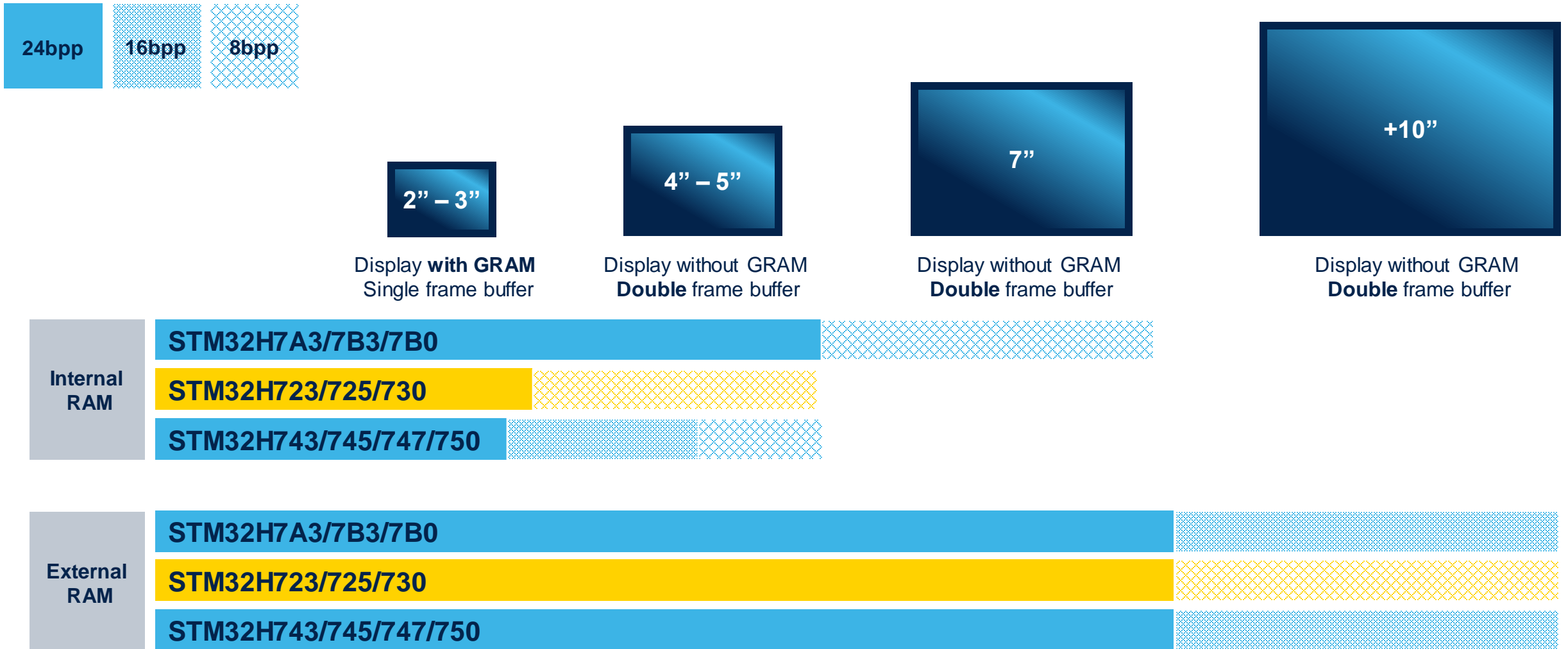


 Industrial
[Watch video](#)



 Industrial
[Watch video](#)

Enhanced graphic UI for any resolution



STM32H7 detailed graphic features

	Features	STM32H7A3/7B0	STM32H723/725/730	STM32H745/747	STM32H743/750
Hardware acceleration	Chrom-ART Accelerator™ Hardware acceleration for graphical operations	•	•	•	•
	Chrom-GRC™ Minimizing memory usage for round displays	•	-	-	-
	JPEG CODEC Optimized video playback	•	-	•	•
Memory interfaces	Quad-SPI Connecting QSPI Flash	•	•	•	•
	Octo-SPI Connecting Octo SPI flash or Octal RAM	•	•	-	-
	FMC Connecting parallel flash, SDRAM, PSRAM	•	•	•	•
	SDMMC Connecting eMMC, MMC,	•	•	•	•
Display interfaces	LCD-TFT display controller	•	•	•	•
	MIPI-DSI	-	-	•	-
	Parallel 8080/6800	•	•	•	•
Embedded memory	Embedded SRAM for framebuffers	Up to 1024 Kbytes	Up to 364 Kbytes	Up to 512 Kbytes	Up to 512 Kbytes
	Embedded flash for code and data	128 Kbytes to 2048 Kbytes	128 Kbytes to 1024 Kbytes	1024 Kbytes to 2048 Kbytes	128 Kbytes to 2048 Kbytes

X-CUBE-TouchGFX

Graphical User Interface development

Faster and easier GUI Development

Free for all STM32 Developers

Maximum Performance on minimum footprint

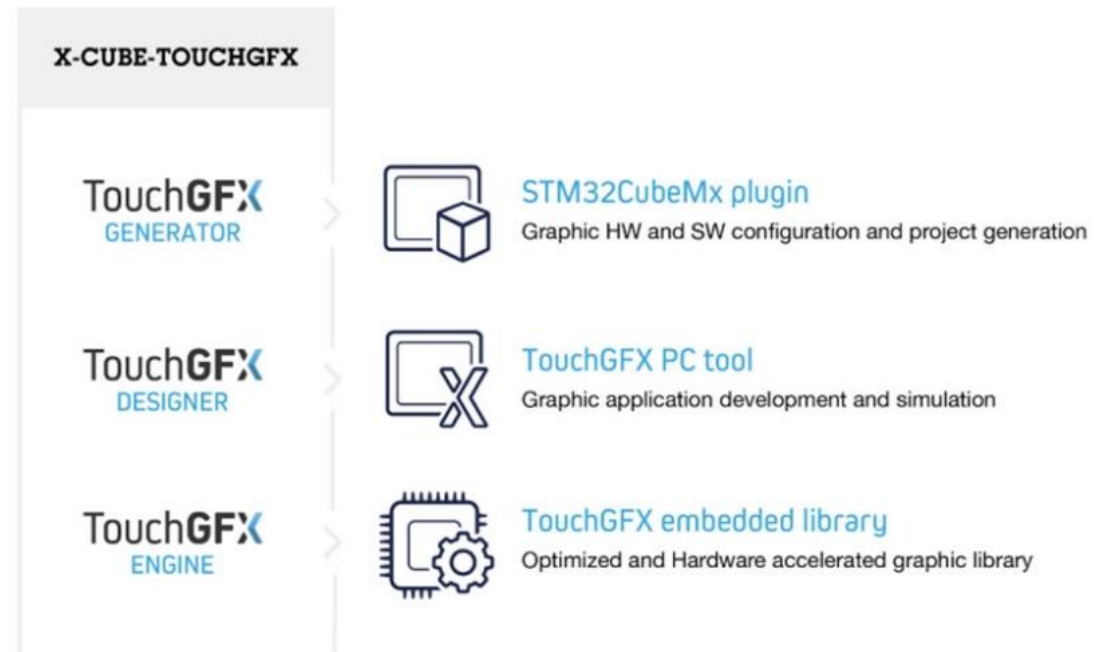
Interoperable with STM32Cube Ecosystem



TouchGFX

Simplify your GUI development with TouchGFX

- STM32H7 is included in the X-CUBE-TouchGFX toolchain
 - Available through STM32CubeMX on STM32CubeIDE, Arm® Keil and IAR Embedded Workbench®
- Out-of-the-box support of the STM32H735G-DK Discovery Kit
- Application template and demo available in TouchGFX Designer



STM32 Graphics Extended Ecosystem

TouchGFX Implementers

World-wide network for TouchGFX expertise and design services

Advanced Graphics Solutions

Software partners taking the full advantages of STM32 graphic capabilities



BRESSLERGROUP



EMBEDDED PARTNERS

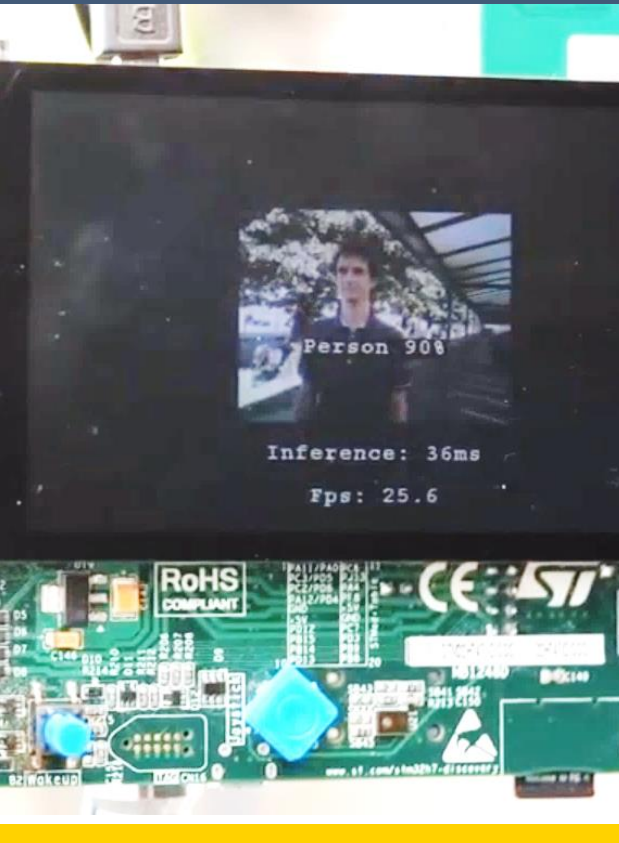


Solutions for STM32H7 Artificial Intelligence



Embed AI in your applications with STM32H7

People detection



Food classification



Voice recognition

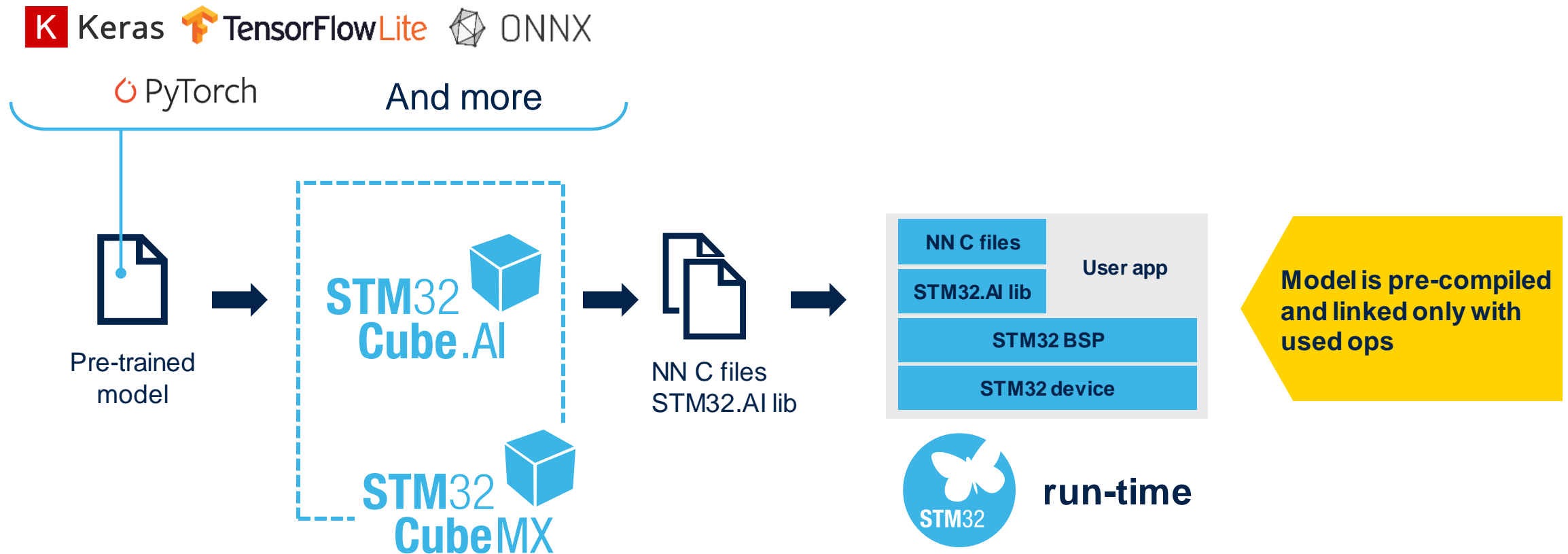


Industrial applications



The key steps behind Neural Networks on STM32

Optimized C code generated by STM32Cube.AI



Solutions for STM32H7

Functional safety





STM32 high performance built-in safety features

Features	STM32F2/F4	STM32F7	STM32H7
Dual watchdogs: Independent watchdog and system window watchdog	•	•	•
Backup clock circuitry with clock security system (CSS)	•	•	•
Hardware CRC unit / Programmable polynomial	• / -	• / •	• / •
Supply monitoring (POR, BOR, PVD)	•	•	•
I/O function locking	•	•	•
PWM critical register protections (write-once registers)	•	•	•
Memory protection unit (MPU) 8 zones – to ensure data integrity from invalid behavior	•	•	•
Multiple Flash memory protection levels	•	•	•
PWM stop on core lockup	-	-	•
ECC Error Code Correction (SECCDED) for SRAM	-	-	•
ECC Error Code Correction (SECCDED) for Flash memory	-	-	•

Note: Arm Cortex-M cores also have built-in safety features (dual stack pointer, fault exceptions, and debug module).



SIL functional safety package for STM32

Reduce time and cost to build STM32-based systems certified to IEC 61508 industrial safety standard





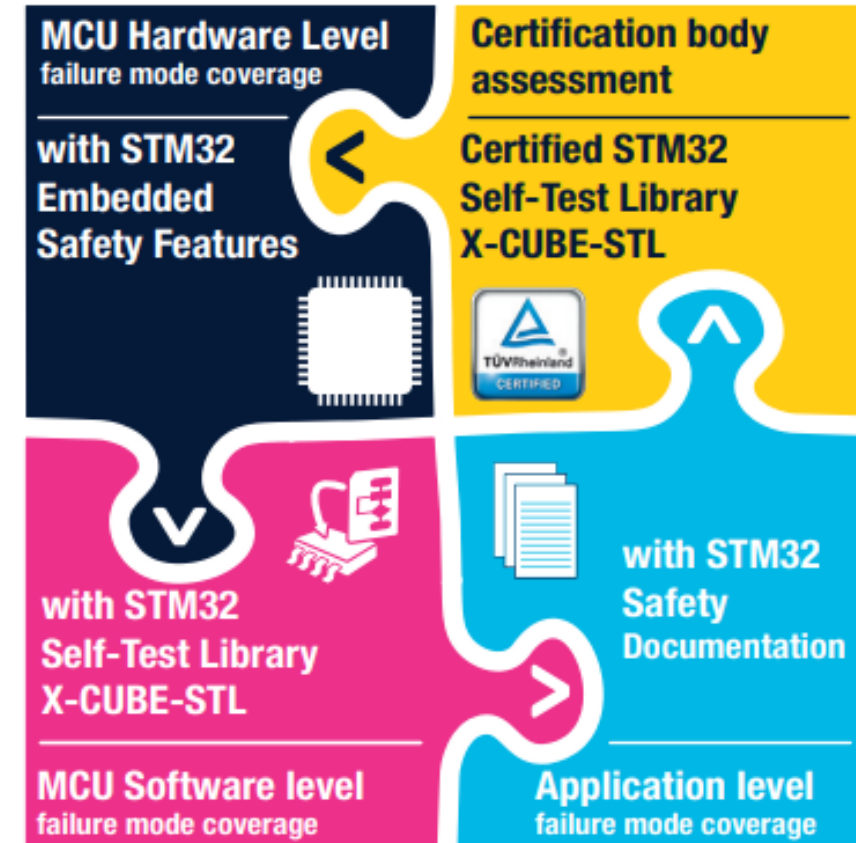
SIL functional safety package for STM32



without
design package

ST provides a complete, certified offering to

- Lower project costs
- Reduce design complexity
- Ease SIL certification assessment



with
design package

Solutions for STM32H7 Motor control



Drive your motor with STM32H7

Robotic



High end Appliance



Servo motor - Industrial

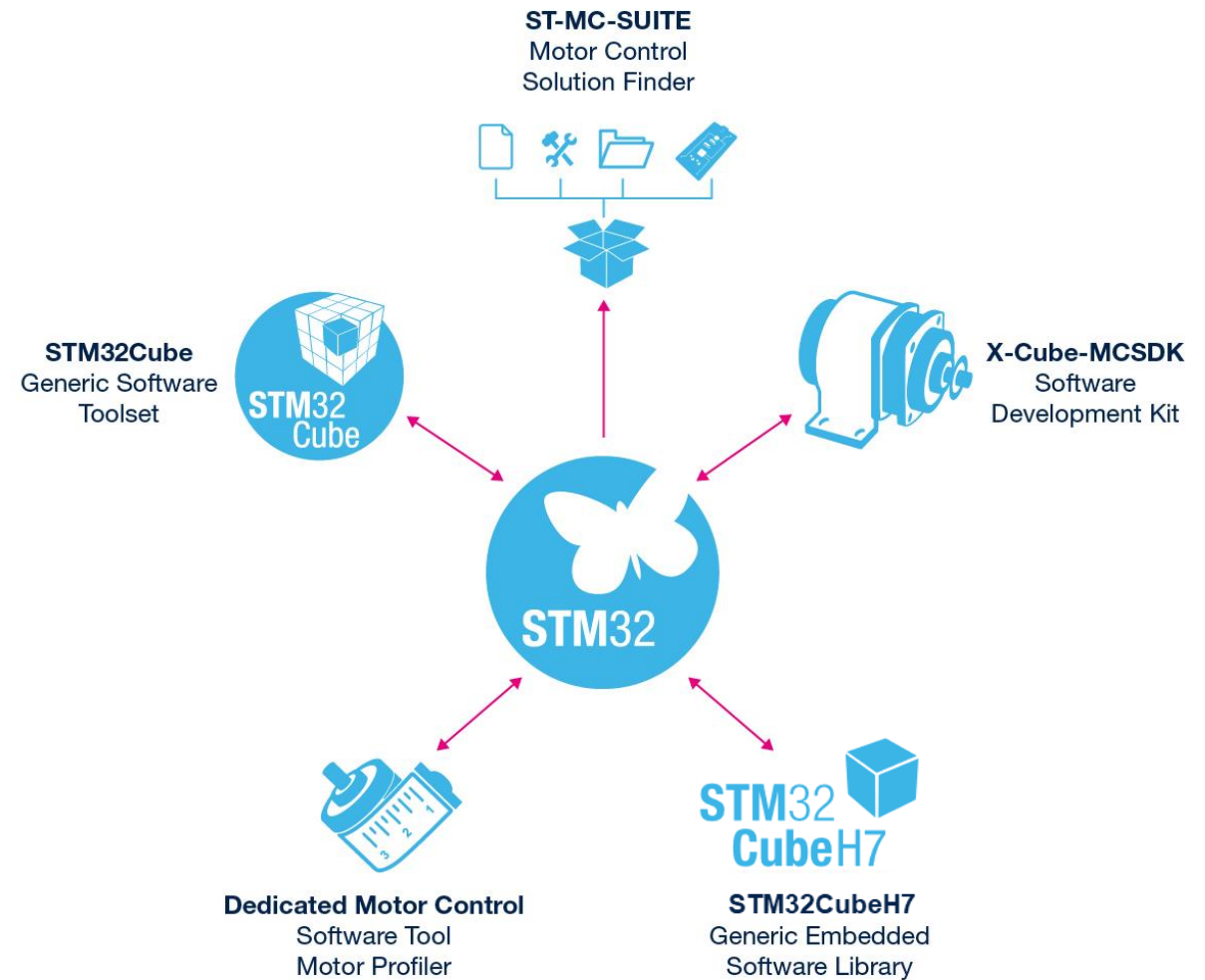


Medical



FOC (field-oriented control) for BLDC/PMSM motors

STM32 tools and software provide an **integrated development environment** to ease and support the design of motor control solutions.

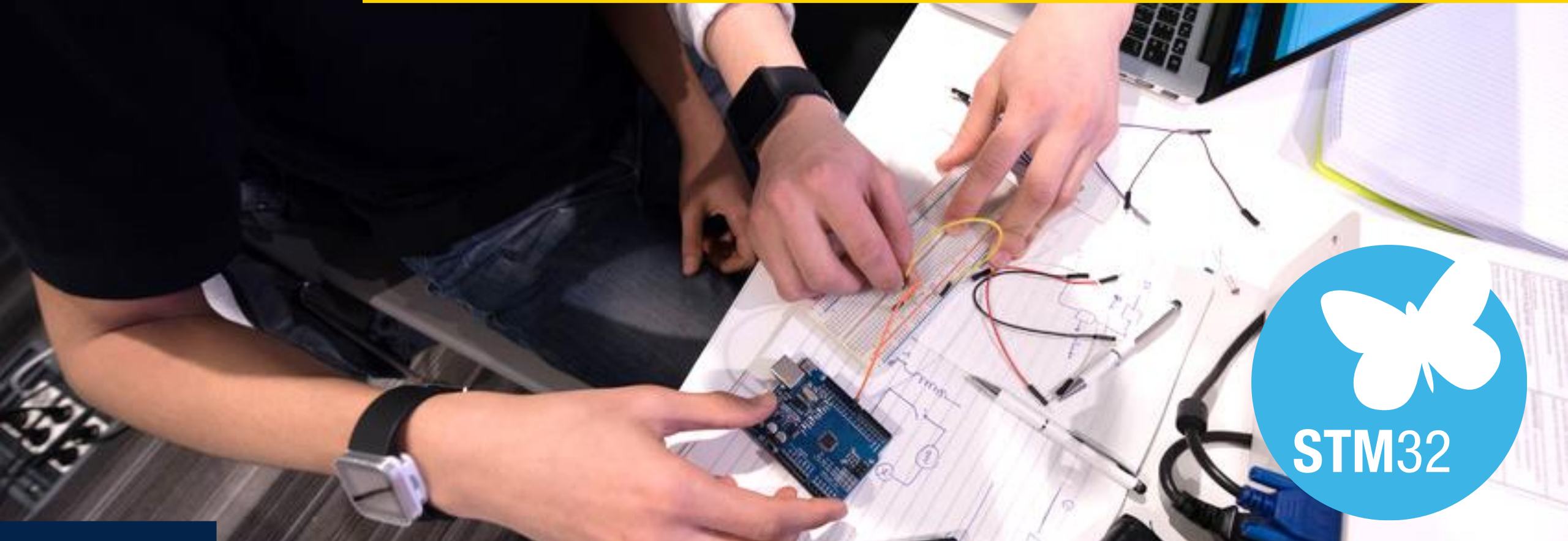


STM32H7 features for Motor control

Features	STM32H723/733/725/735/730	Benefit
Core	Cortex-M7	Performance and efficiency
FPU	yes	Performance and efficiency
MPU	yes	Safety
Freq CPU max	550MHz	Performance and efficiency
DMIPS	1177	Performance and efficiency
Flash / SRAM data size	128KB to 1MB / 564KB	Performance and integration/cost
Including : ITCM/DTCM RAM	<i>Up to 256KB (configurable) / 128KB</i>	<i>Performance and efficiency</i>
Error Code Correction	SECCDED on full memory map	Safety
ADC SAR	2x16bit 3.6Msps, 1x12bit 5Msps	Efficiency
Other Analog	2x Comp, 2x PGA, 2xDAC, 1xDFSDM	Integration/cost
Advanced Motor Control timer	2x (275MHz)	Performance and efficiency
Cache and Accelerator	32KB+32KB L1 cache Graphic, Cordic, FMAC, Crypto(**)	Performance and efficiency
Security Services (SFI and SB-SFU)	yes(*)	System Integrity
Package	VFQFPN68 LQFP100/144/176 BGA100/144/169/176 WLCSP115	Cost/Integration/flexibility
Max Temperature range °C	[-40 .. +125] Tj max 140 °C	Integration and cost

(*) : on crypto part numbers

A complete ecosystem for single and dual-core architecture





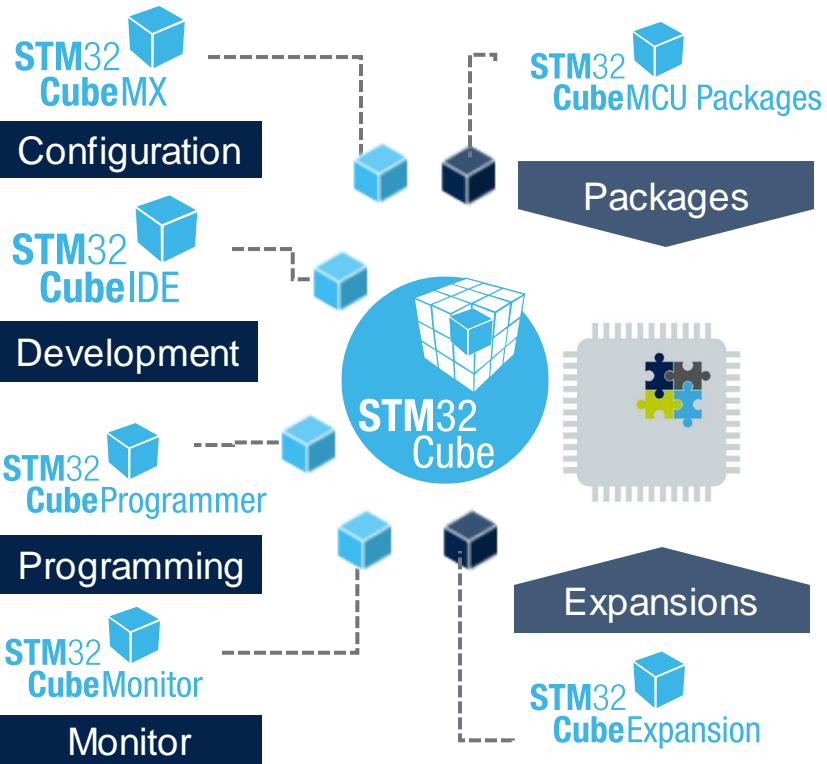
Supported by the STM32 ecosystem

Software



Software Tools

Embedded Software



Hardware

STM32 Nucleo-144 boards



Discovery kits



Customer support



FAE - Worldwide Customer Support



community.st.com

MOOC



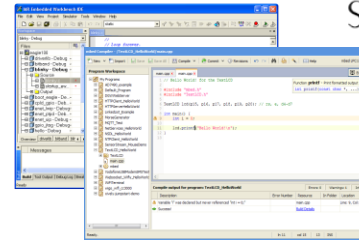
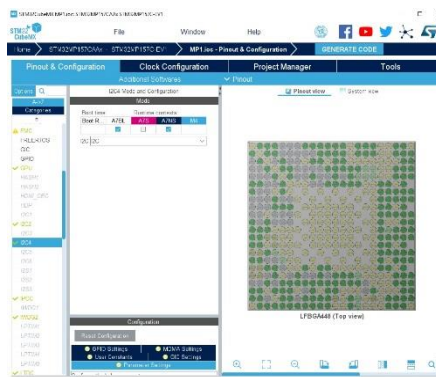
Partner Program





Software tools for STM32H7

Complete support of Arm Cortex-M architecture



STM32CubeMX

Graphical tool for easy configuration

- Configure and generate Code
- Peripherals configuration

IDEs Compile and Debug

Simple and powerful Solutions

- Partners IDE
- Free IDE based on Eclipse

STM32 Programming & Monitoring tools

STM32CubeProg STM32CubeMonitor

- Program the application into the chip
- Sign the application and generate license
- Monitor variables at run-time

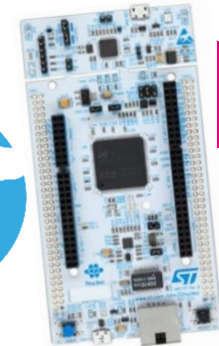


Pick the right STM32H72x/H73x development tools

Speed-up evaluation, prototyping and design
(board selection guide available at the end of this presentation)



Starting at
\$87



Starting at
\$29

STM32H7 class	Cores/Speed	Part numbers	Discovery Kit	Nucleo-144 board
STM32H72x/3x	Single Core 550 MHz	STM32H723/733	-	NUCLEO-H723ZG
		STM32H725/735	STM32H735G-DK	-
		STM32H730, Value line, Crypto enabled	STM32H735G-DK *	-

* Recommended board (no dedicated board for this part number)

1 Discovery Kit

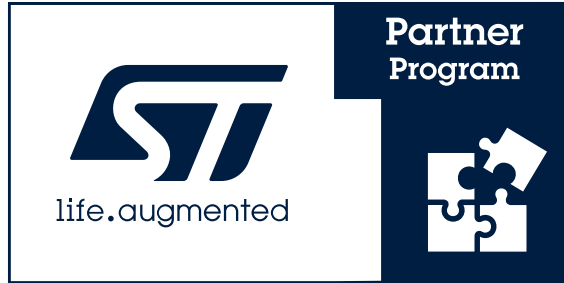
Flexible prototyping & demo

1 Nucleo-144 Board

Affordable and quick prototyping



Software, tools and services a broad ecosystem to support development



Large selection of partners
already engaged for:

- Embedded software
- Software tools
- Graphics UI
- Security
- Training and services





Releasing your creativity



[/STM32](#)



[@ST_World](#)



[community.st.com](#)



[www.st.com/STM32H7](#)



[wiki.st.com/stm32mcu](#)



[github.com/STMicroelectronics](#)



[STM32H7 online training](#)



[STM32H7 blog article](#)

Our technology starts with You



Find out more at www.st.com/STM32H7

© STMicroelectronics - All rights reserved.

ST logo is a trademark or a registered trademark of STMicroelectronics International NV or its affiliates in the EU and/or other countries.

For additional information about ST trademarks, please refer to www.st.com/trademarks.

All other product or service names are the property of their respective owners.



life.augmented