



ST4SIM-300 eSIM for IoT



Dedicated to industrial & IoT applications

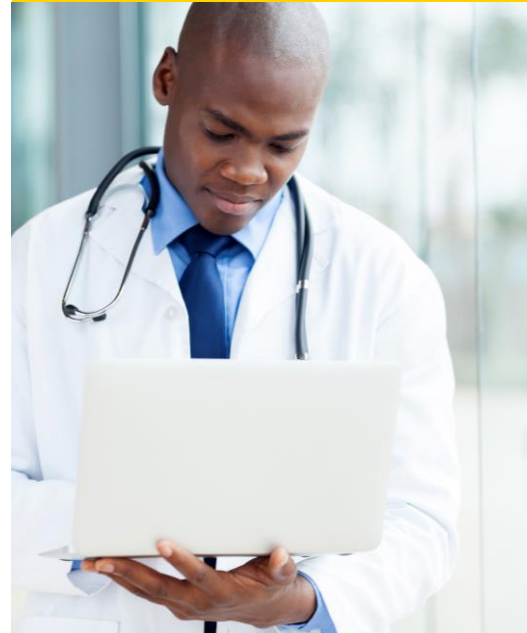
Tracking



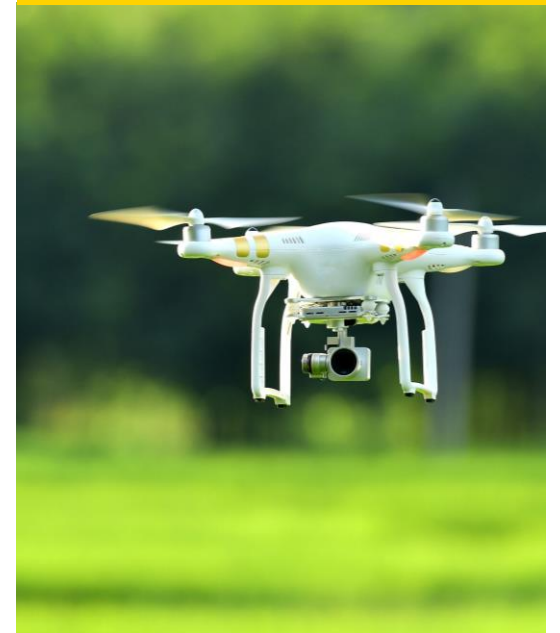
Metering



Healthcare



IoT devices

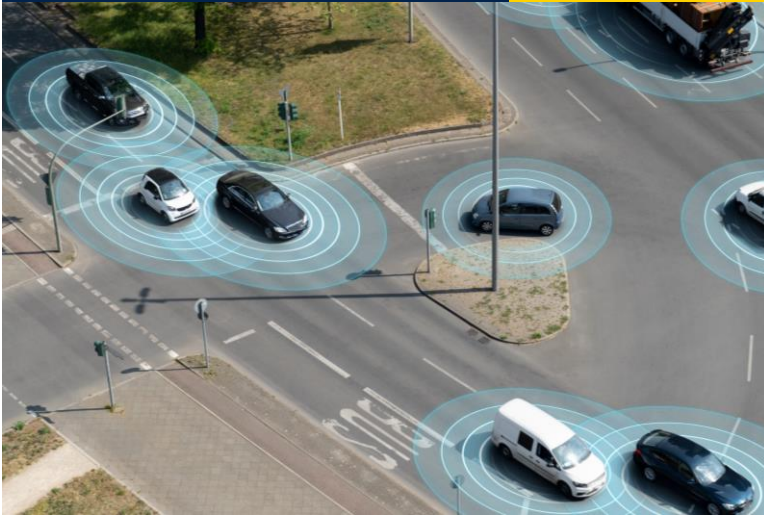


GSMA eSIM SGP specifications

GSMA™

eSIM for M2M

SGP.02

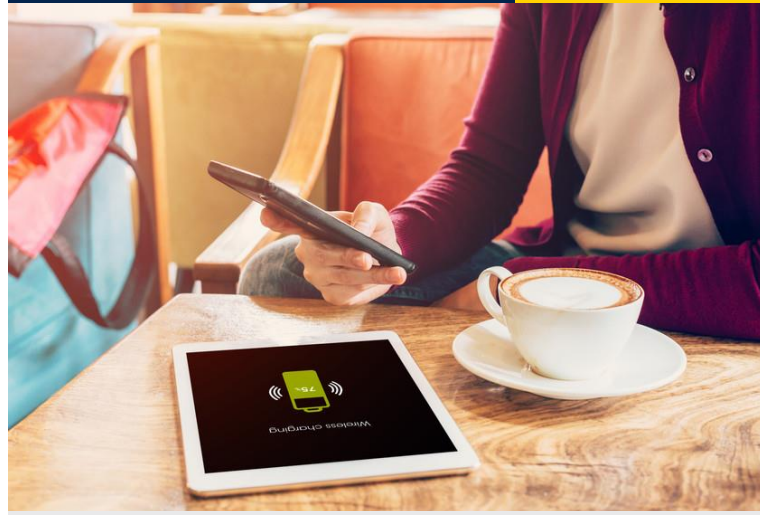


- Version 3.2 in volume production
- Version 4.3 available for 5G

GSMA™

eSIM for Consumer

SGP.22



- Version 2.5 in volume production
- Version 3.1 published

GSMA™

eSIM for IoT

SGP.32



- Technical spec SGP.32 v1.2

Introduction to GSMA for IoT specification

GSMA SGP.31/32

enables remote SIM provisioning of any IoT device



Benefits

The best of eSIM for Consumer & M2M

- Operators manage the SM-DP+ server to store and send profiles to the devices
- Remote provisioning can work on network without SMS (NB-IoT)
- No pre-integration required, like between SM-DP and SM-SR (SGP.01)
- The profile download is initiated by Service Provider (Push mechanism)
- Compatible with IoT devices that have limited functionalities (no UI)

Combined with additional benefits specific to IoT

- Provides full control to OEMs to bring connectivity into their devices
- Architecture based on interoperability, not on integrations: each player has an equal level of opportunity

ST4SIM-300 solution overview

Secure cellular connectivity solutions for IoT and Industrial



eSIM ecosystem made easy for
IoT cellular-enabled devices



GSMA-certified eSIM for IoT solution
based on SGP.32 standard specification



Complete ecosystem provided through partners
eIM, IPA & bootstrap connectivity

Industrial and IoT grade solutions (T° & reliability)

Multiple package formats (Card plugin, MFF2, WLCSP)

ST4SIM-300M overview

Designed for industrial devices

eSIM OS based on
GSMA SGP.32

GSMA™

Secure component EAL6+

Industrial grade solution

Certified GSMA eSIM for IoT SGP.32 version 1.2

- Interoperable with all MNO & platform

Advanced operating system

- ETSI & 3GPP Release 17 for 3G / LTE / 5G / Cat-M / NB-IoT networks
- Java Card™ & GlobalPlatform™ compliant, including all advanced cryptography (RSA / ECC)
- Java Card™ applets available for vertical services

Based on ST33K1M5M hardware - Certified product EAL6+

- Arm® Cortex® M35P
- Supply voltage range: 1.8 V, 3 V

Industrial-grade [-40°C, +105°C]

- Compliant with ETSI M2M specification TS 102 671

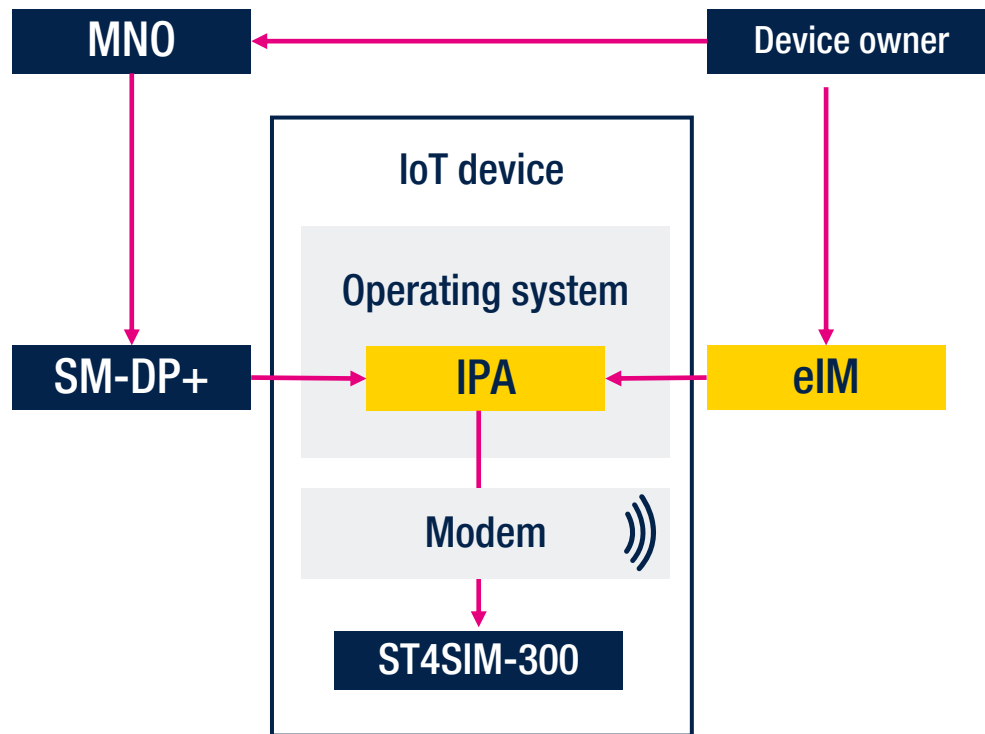
Large choice of packages

- Standard ETSI M2M package DFN 6 x 5 mm (MFF2)
- Smallest package M2M WLCSP
- Ruggedized card body (plug-in: 2FF, 3FF, 4FF)



ST4SIM-300 ecosystem

Simplified eSIM ecosystem with the eIM and IPA



IPA – IoT Profile Assistant

- Interface between the eSIM and the eIM
- Provides functions that enable the remote provisioning
- Two possible configurations:

IPA_d
Runs on the IoT device

IPA_e
Runs on the eSIM

eIM – eSIM IoT remote manager

- Provides remote interface to trigger profile management on a single IoT device or a fleet of IoT devices

ST4SIM-300 documentation

Press release

[Read here](#)



Flyer

[Download here](#)



Campaign page

[Visit here](#)



Whitepaper

[Read here](#)



Product presentation

[Download here](#)



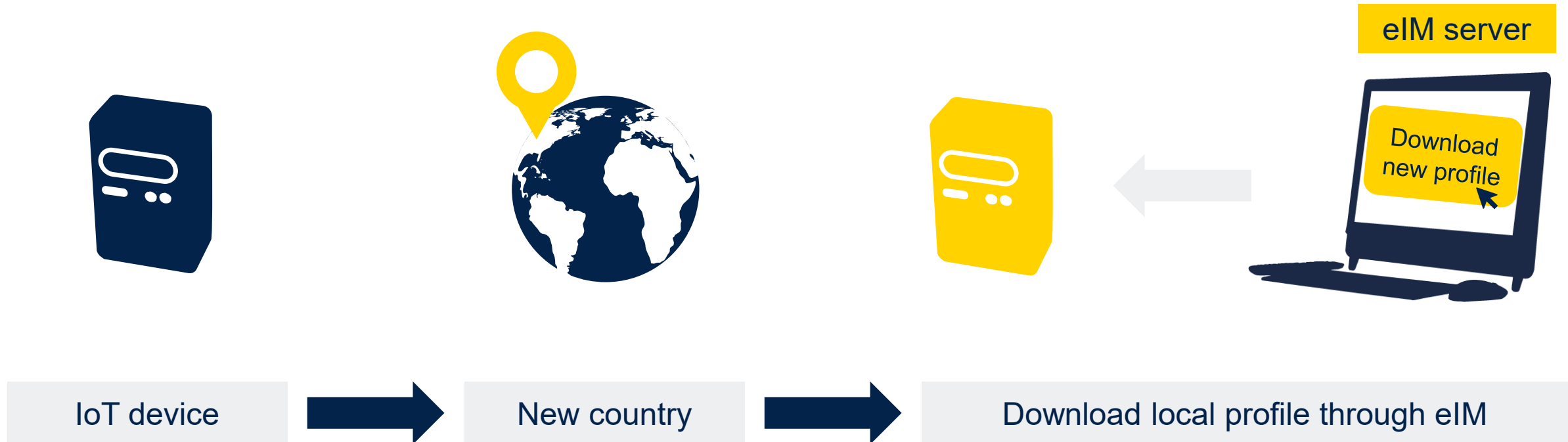
Video series

[Watch here](#)



Customer journey

Localizing profiles all around the world remotely



ST4SIM-300 takeaways



Complete eSIM for IoT offer

IoT and industrial-grade solutions

eSIM ecosystem made easy for IoT cellular-enabled devices

Learn more at st.com/st4sim and
st.com/sim-esim



Our technology starts with You



Find out more at st.com/st4sim-300

© STMicroelectronics - All rights reserved.

ST logo is a trademark or a registered trademark of STMicroelectronics International NV or its affiliates in the EU and/or other countries.

For additional information about ST trademarks, please refer to www.st.com/trademarks.

All other product or service names are the property of their respective owners.

