

STEVAL-CAM-M01

PCB4280D

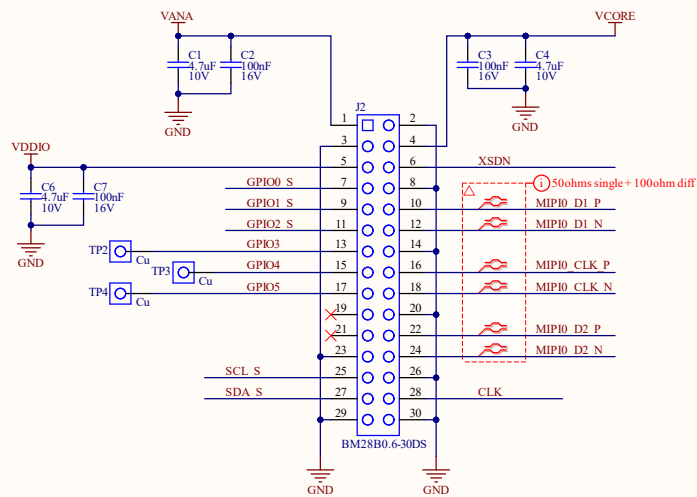
REVISION HISTORY

SHEET 01: TITLE
SHEET 02: SENSOR
SHEET 03: MECHANICAL CONSTRAINTS

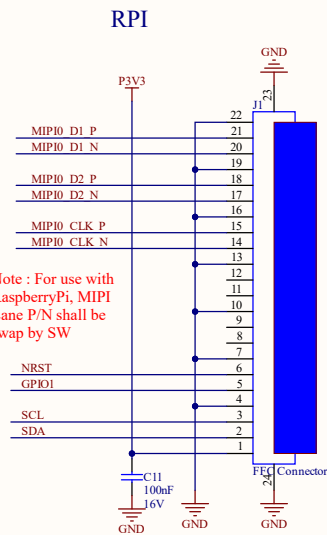
DATE	VERSION	NAME	DESCRIPTION
28/05/2024	1.0		First Release
25/03/2025	1.1		Note added on RaspberryPi interface



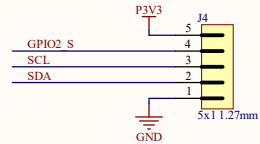
Module Sensor



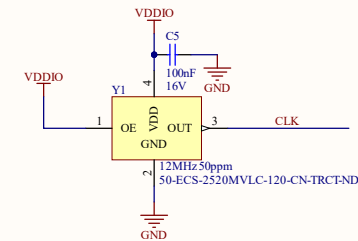
INTERFACE



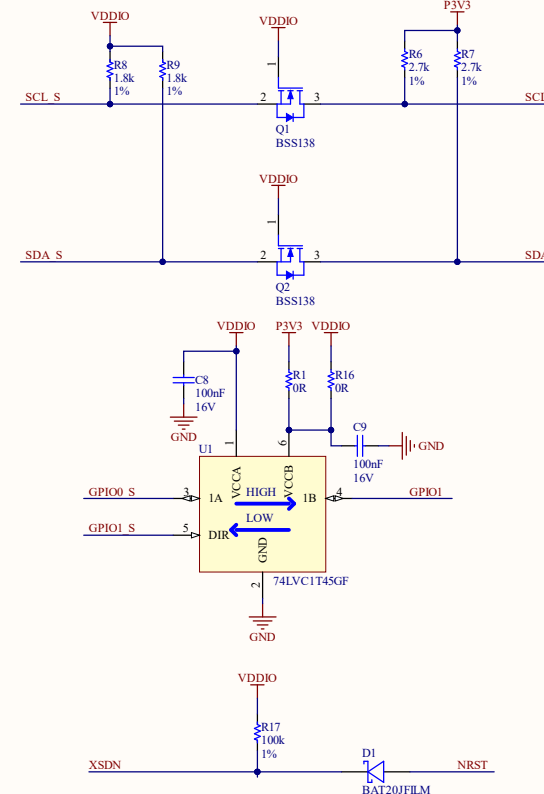
Illuminator



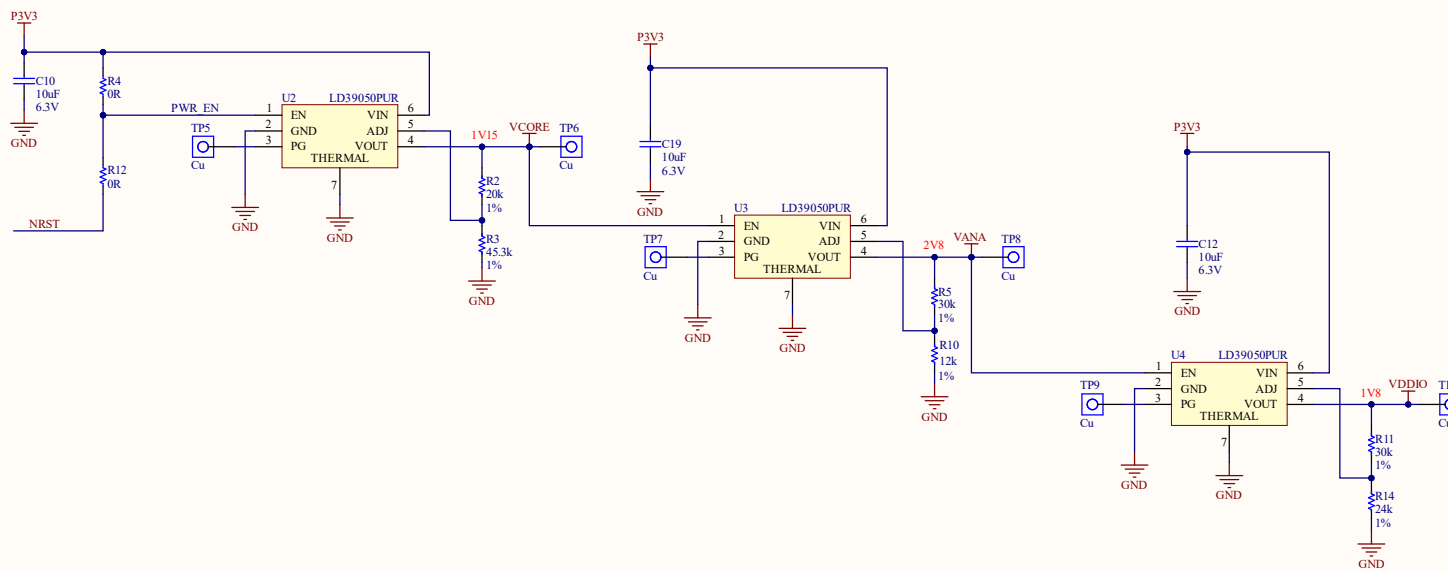
CLOCK



Level Shifting



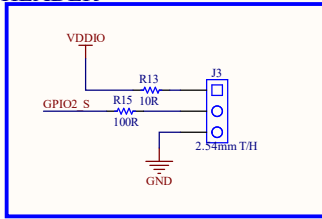
Power & Reset



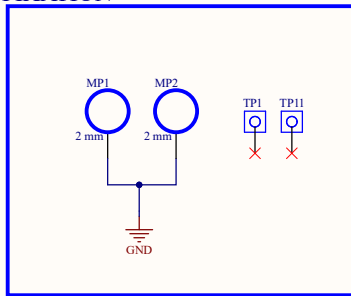
1 2 3 4 5

A

HEADER



FIXATION



BOARD STICKER



B

Cable

