



---

SPC560P34x/SPC560P40x Serial Boot with Autobaud Autoscan  
reference manual addendum

---

## **Introduction**

The aim of this document is to give a supplementary description for serial boot modes in addition to the description in RM0046, rev. 3 (see [Section Appendix A](#)). It is described the hardware configuration to allow the right selection of the serial boot mode with autobaud by means of autoscan and the RX pins configuration of serial communication peripherals (FlexCAN and LINFlex).

---

# Contents

<b>1</b>	<b>Hardware configuration to select boot mode</b> .....	<b>5</b>
1.1	SPC560P34x/SPC560P40x boot pins .....	5
1.2	Autobaud feature .....	6
<b>Appendix A</b>	<b>Reference document</b> .....	<b>9</b>
<b>Revision history</b>	.....	<b>10</b>

## List of tables

Table 1.	Hardware configuration to select boot mode .....	5
Table 2.	SPC560P34x/SPC560P40x boot pins .....	5
Table 3.	Document revision history .....	10

## List of figures

Figure 1. BAM Autoscan code flow ..... 8

# 1 Hardware configuration to select boot mode

The SPC560P34x/SPC560P40x devices detect the serial boot mode based on external pins.

To enter boot mode via FlexCAN or LINFlex, the device must be forced into an Alternate Boot Loader Mode via the FAB (Force Alternate Boot Mode), which must be asserted before initiating the reset sequence. The type of alternate boot mode is selected according to the ABS (Alternate Boot Selector) pins (see [Table 1](#)).

Boot configuration pins are:

- PAD A[2] - ABS[0],
- PAD A[3] - ABS[1],
- PAD A[4] - FAB

**Table 1. Hardware configuration to select boot mode**

FAB <sup>(1)</sup>	ABS[1,0]	Standby-RAM boot flag	Boot ID	Boot mode
1	00	0	-	Serial Boot via LINFlex without autobaud
1	01	0	-	Serial Boot via FlexCAN without autobaud
1	10	0	-	Scan of both serial interfaces (FlexCAN and LINFlex) for Serial Boot with autobaud

1. During reset the boot configuration pins are weak pull down.

*Note: PAD A[2] - ABS[0] is not bonded on SPC560P34x/SPC560P40x LQFP64 so for this package the option 'FlexCAN without Autobaud' is not available and the internal pull-down on PAD A[2] assures that it is at low logical value at reset."*

## 1.1 SPC560P34x/SPC560P40x boot pins

The TX/RX pin (LINFlex\_0 and FlexCAN\_0) used for serial boot and configuration boot pins to select the serial boot mode are described in the [Table 2](#) for LQFP64 and LQFP100 packages.

**Table 2. SPC560P34x/SPC560P40x boot pins**

Port pin	Function	Pin	
		64-pin	100-pin
A[2] <sup>(1)</sup>	ABS[0]	-	57
A[3] <sup>(1)</sup>	ABS[1]	41	64
A[4] <sup>(1)</sup>	FAB	48	75
B[0]	CAN_0 TX	49	76
B[1]	CAN_0 RX	50	77
B[2]	LIN_0 TX	51	79

**Table 2. SPC560P34x/SPC560P40x boot pins (continued)**

Port pin	Function	Pin	
		64-pin	100-pin
B[3] <sup>(2)</sup>	LIN_0 RX	-	80 <sup>(2)</sup>
B[7] <sup>(3)</sup>	LIN_0 RX	20 <sup>(3)</sup>	29

1. Weak pull down during reset.
2. SPC560P34x/SPC560P40x LQFP100 package uses only PAD B[3] - pin 80 for boot via LINFLEX
3. SPC560P34x/SPC560P40x LQFP64 package uses only PAD B[7] - pin 20 for boot via LINFLEX

## 1.2 Autobaud feature

SPC560P34x/SPC560P40x devices implement the autobaud feature via FlexCAN or LinFlex selecting the active serial communication peripheral by means of an autoscan routine.

When autobaud configuration is selected by ABS and FAB pins, the autoscan routine starts and listens to the active bus protocol. Initially the LinFlex\_0 RX pin and FlexCAN\_0 RX pin are configured as GPIO inputs:

- for LQFP100 internal weak pull-up enabled for both RX pins,
- for LQFP64 internal weak pull-up enabled only for FlexCAN\_0 RX pin.

The autoscan routine waits in polling for the first LOW level to select which routine will be executed:

- FlexCAN Autobaud routine
- LinFlex Autobaud routine

Then the measurement baud rate is computed to configure the serial communication at the right rate. In the end of baud rate measurement, LinFlex\_0 RX pin and FlexCAN\_0 RX pin switches to work as dedicated pin.

Baud rate measurement is using the System Timer Module (STM) which is driven by the system clock. Measurement itself is performed by software polling the related inputs as general purpose IO's, resulting in a detection granularity that is directly related to the execution speed of the software.

One main difference of the autobaud feature is that the system clock is not driven directly by the external oscillator, but it is driven by the FMPLL output. The reason is that to have an optimum resolution for baud rate measurement, the system clock needs to be nearer to the maximum allowed device's frequency.

This is achieved with the following two steps:

1. using the Clock Monitor Unit (CMU) and the internal RC oscillator (IRC), the external frequency is measured using the IRC as reference to determine this frequency.
2. Based on the result of this measurement, the FMPLL is programmed to generate a system clock that is configured to be near, but lower, to the maximum allowed frequency.

After setting up the system clock, the BAM autoscan code configures the FlexCAN RX pin (B[1] on all packages) and LinFlex RX pin (B[3] on LQFP100 or B[7] on LQFP64) as GPIO inputs and searches for FlexCAN RX pin level to verify if CAN is connected or not.

Then continuously waits in polling on change of RX pins level. The FlexCAN RX pin level takes precedence. First signal found at low level selects the serial boot routine that will be executed.

In case a low level is detected on any input, the corresponding autobaud measurement functionality is started:

- when FlexCAN RX (corresponds to pin B[1]) level is low, the CAN autobaud measurement starts and then sets up the FlexCAN baud rate accordingly;
- when UART RX (corresponds to pin B[3] on LQFP100 or B[7] on LQFP64) level is low, the UART autobaud measurement starts and then sets up the LINFlex baud rate accordingly.

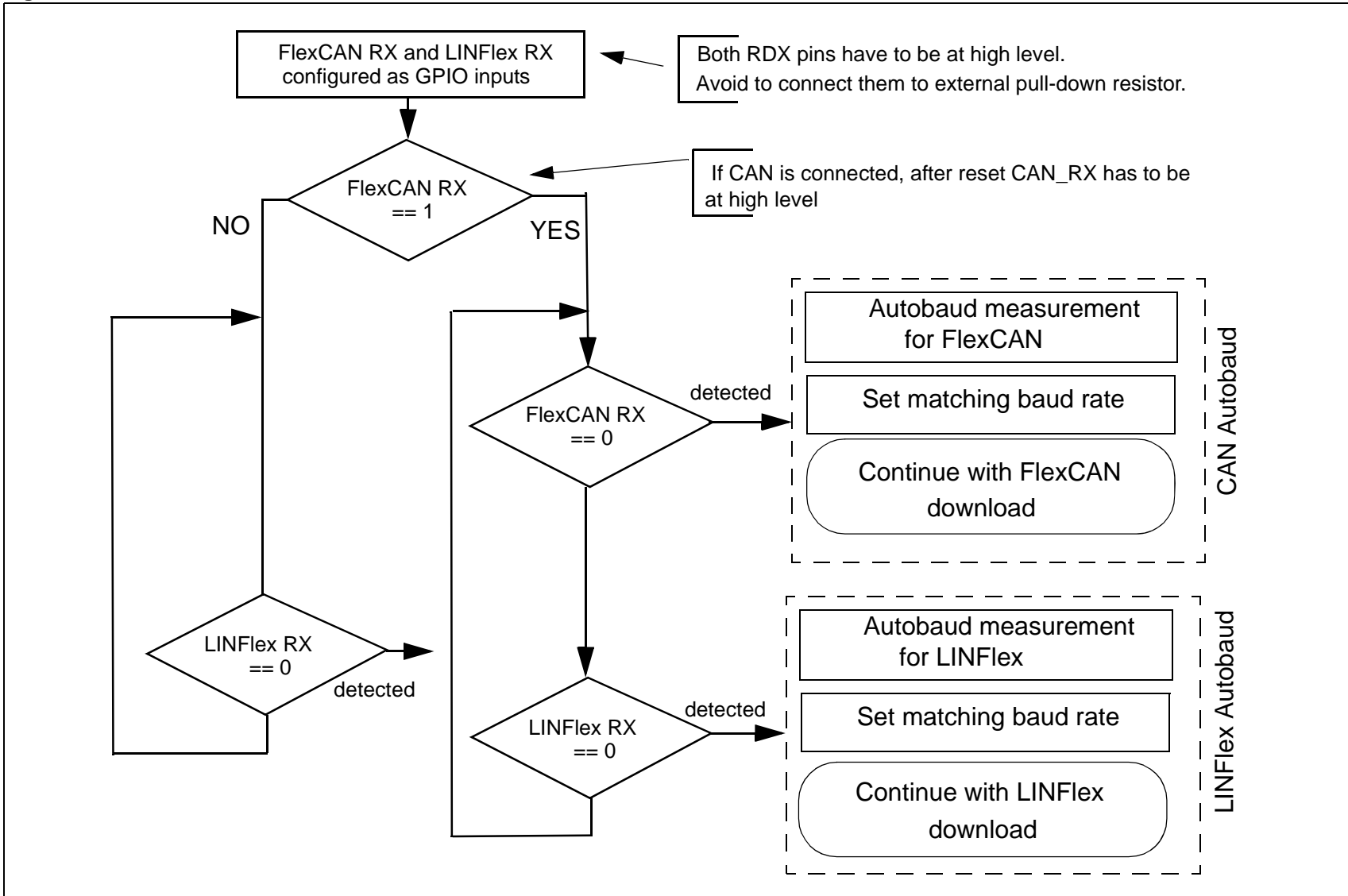
After performing the autobaud measurement and setting up the baud rate, the corresponding RX input is reconfigured and the related standard download process is started; in case of a detected CAN transmission a download using the CAN protocol as described in section “Bootstrap with FlexCAN— autobaud disabled” of RM0046, rev. 3 (see [Section Appendix A](#)), and in case of a detected UART transmission a download using the UART protocol as described in Section “Boot from UART— autobaud disabled” of RM0046, rev.3 (see [Section Appendix A](#)).

The following [Figure 1](#) identifies the corresponding flow and steps.

*Note: When autobaud scan is selected, initially both LINFlex\_0 RX pin and FlexCAN\_0 RX pin should be at high level. No external circuitry should pull-down them to allow right autoscan.*



Figure 1. BAM Autoscan code flow





## Appendix A Reference document

1. SPC560P34/SPC560P40 32-bit MCU family built on the embedded Power Architecture<sup>®</sup> (RM0046, rev.3 - Doc ID 16912)

## Revision history

**Table 3. Document revision history**

Date	Revision	Changes
12-Oct-2011	1	Initial release.
18-Sep-2013	2	Updated disclaimer.

**Please Read Carefully:**

Information in this document is provided solely in connection with ST products. STMicroelectronics NV and its subsidiaries ("ST") reserve the right to make changes, corrections, modifications or improvements, to this document, and the products and services described herein at any time, without notice.

All ST products are sold pursuant to ST's terms and conditions of sale.

Purchasers are solely responsible for the choice, selection and use of the ST products and services described herein, and ST assumes no liability whatsoever relating to the choice, selection or use of the ST products and services described herein.

No license, express or implied, by estoppel or otherwise, to any intellectual property rights is granted under this document. If any part of this document refers to any third party products or services it shall not be deemed a license grant by ST for the use of such third party products or services, or any intellectual property contained therein or considered as a warranty covering the use in any manner whatsoever of such third party products or services or any intellectual property contained therein.

**UNLESS OTHERWISE SET FORTH IN ST'S TERMS AND CONDITIONS OF SALE ST DISCLAIMS ANY EXPRESS OR IMPLIED WARRANTY WITH RESPECT TO THE USE AND/OR SALE OF ST PRODUCTS INCLUDING WITHOUT LIMITATION IMPLIED WARRANTIES OF MERCHANTABILITY, FITNESS FOR A PARTICULAR PURPOSE (AND THEIR EQUIVALENTS UNDER THE LAWS OF ANY JURISDICTION), OR INFRINGEMENT OF ANY PATENT, COPYRIGHT OR OTHER INTELLECTUAL PROPERTY RIGHT.**

**ST PRODUCTS ARE NOT DESIGNED OR AUTHORIZED FOR USE IN: (A) SAFETY CRITICAL APPLICATIONS SUCH AS LIFE SUPPORTING, ACTIVE IMPLANTED DEVICES OR SYSTEMS WITH PRODUCT FUNCTIONAL SAFETY REQUIREMENTS; (B) AERONAUTIC APPLICATIONS; (C) AUTOMOTIVE APPLICATIONS OR ENVIRONMENTS, AND/OR (D) AEROSPACE APPLICATIONS OR ENVIRONMENTS. WHERE ST PRODUCTS ARE NOT DESIGNED FOR SUCH USE, THE PURCHASER SHALL USE PRODUCTS AT PURCHASER'S SOLE RISK, EVEN IF ST HAS BEEN INFORMED IN WRITING OF SUCH USAGE, UNLESS A PRODUCT IS EXPRESSLY DESIGNATED BY ST AS BEING INTENDED FOR "AUTOMOTIVE, AUTOMOTIVE SAFETY OR MEDICAL" INDUSTRY DOMAINS ACCORDING TO ST PRODUCT DESIGN SPECIFICATIONS. PRODUCTS FORMALLY ESCC, QML OR JAN QUALIFIED ARE DEEMED SUITABLE FOR USE IN AEROSPACE BY THE CORRESPONDING GOVERNMENTAL AGENCY.**

Resale of ST products with provisions different from the statements and/or technical features set forth in this document shall immediately void any warranty granted by ST for the ST product or service described herein and shall not create or extend in any manner whatsoever, any liability of ST.

ST and the ST logo are trademarks or registered trademarks of ST in various countries.

Information in this document supersedes and replaces all information previously supplied.

The ST logo is a registered trademark of STMicroelectronics. All other names are the property of their respective owners.

© 2013 STMicroelectronics - All rights reserved

STMicroelectronics group of companies

Australia - Belgium - Brazil - Canada - China - Czech Republic - Finland - France - Germany - Hong Kong - India - Israel - Italy - Japan - Malaysia - Malta - Morocco - Philippines - Singapore - Spain - Sweden - Switzerland - United Kingdom - United States of America

[www.st.com](http://www.st.com)