

Discovery kit with STM32L4P5AG MCU

Introduction

The **STM32L4P5G-DK** Discovery kit is a complete demonstration and development platform for the STMicroelectronics Arm® Cortex®-M4 core-based **STM32L4P5AGI6P** microcontroller with four I²C buses, three SPI and six USART ports, CAN port, two SAI ports, 12-bit ADC, 12-bit DAC, internal 320-Kbyte SRAM and 1-Mbyte flash memory, two Octo-SPI memory interfaces, touch-sensing capability, USB OTG FS port, TFT LCD controller, flexible memory controller (FMC), 8- to 14-bit DCMI interface, and JTAG debugging support.

The STM32L4P5G-DK Discovery kit is used as a reference design for user application development before porting to the final product.

The full range of hardware features on the board helps the user evaluate all the peripherals (USB OTG FS, Octo-SPI flash memory and PSRAM memory device, eMMC, and others) and develop applications. The ARDUINO® Uno V3 and STMod+ connectors provide easy connection to extension shields or daughterboards for specific applications.

STLINK-V3E is integrated into the board, as an embedded in-circuit debugger and programmer for the STM32 MCU and the USB Virtual COM port bridge.

Figure 1. STM32L4P5G-DK top view

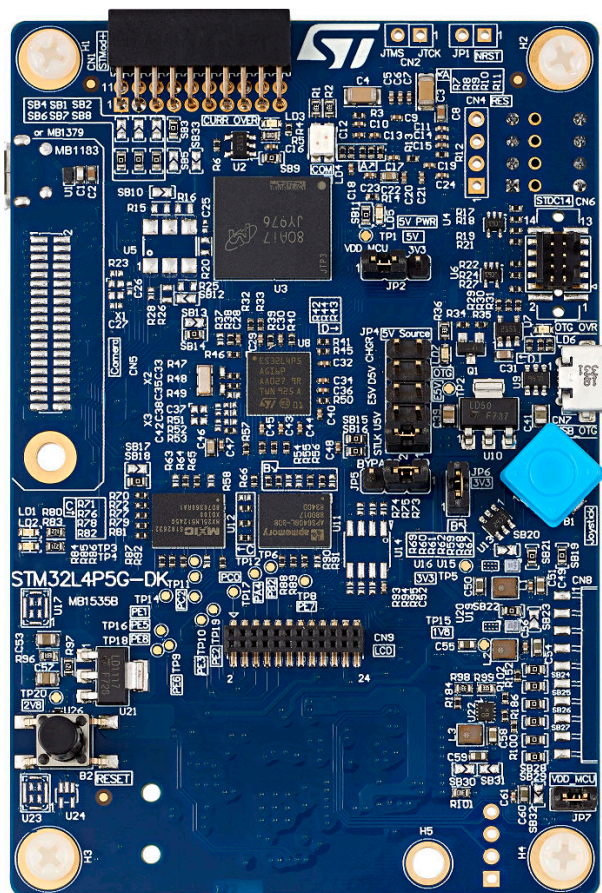
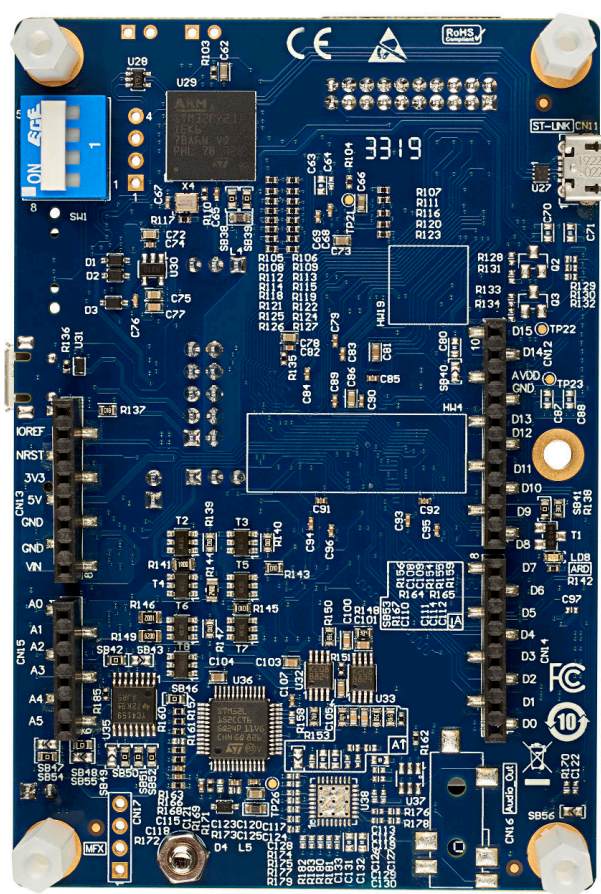


Figure 2. STM32L4P5G-DK bottom view



Pictures are not contractual.

1 Features

- STM32L4P5AGI6P Arm® Cortex® core-based microcontroller featuring 1 Mbyte of flash memory and 320 Kbytes of RAM in a UFBGA169 package
- 240x240 64-bit color LCD with RGB interface (connector only)
- 4-Gbyte onboard eMMC
- On-board current measurement
- SAI audio codec (footprint only)
- MEMS digital microphone (footprint only)
- 512-Mbit Octo-SPI NOR flash memory with DDR mode
- 64-Mbit Octo-SPI PSRAM memory with DDR mode
- 2 user LEDs
- Reset buttons
- 4-direction joystick with a selection button
- Board connectors:
 - 8-bit camera (footprint only)
 - Stereo headset jack (footprint only)
 - USB with Micro-AB
 - User interface through USB Virtual COM port
 - Arm® Cortex® 10-pin 1.27 mm-pitch debug connector over STDC14 footprint
 - ARDUINO® Uno V3 expansion connector
 - STMod+ expansion connector
- Flexible power-supply options:
 - ST-LINK USB V_{BUS} , USB OTG connector, or external sources
- On-board STLINK-V3E debugger/programmer with USB re-enumeration capability: mass storage, Virtual COM port, and debug port
- Microcontroller supply voltage: fixed 3.3 V and extern SMPS to generate V_{core} logic supply
- Comprehensive free software libraries and examples available with the STM32CubeL4 MCU Package
- Support of a wide choice of Integrated Development Environments (IDEs) including IAR Embedded Workbench®, MDK-ARM, and STM32CubeIDE

Note: Arm is a registered trademark of Arm Limited (or its subsidiaries) in the US and/or elsewhere.



2 Ordering information

To order the STM32L4P5G-DK Discovery kit, refer to Table 1. Additional information is available from the datasheet and reference manual of the target STM32.

Table 1. Ordering information

Order code	Board references	Target STM32
STM32L4P5G-DK	<ul style="list-style-type: none"> MB1535⁽¹⁾ MB1280⁽²⁾ 	STM32L4P5AGI6P

1. Main board.
2. Fanout board.

2.1 Codification

The meaning of the codification is explained in Table 2.

Table 2. Codification explanation

STM32XXYYZ-DK	Description	Example: STM32L4P5G-DK
XX	MCU series in STM32 32-bit Arm Cortex MCUs	STM32L4+ series
YY	MCU product line in the series	STM32L4P5
Z	STM32 flash memory size: <ul style="list-style-type: none"> G for 1 Mbyte 	1 Mbyte
DK	Discovery kit	Discovery kit

3 Development environment

3.1 System requirements

- Multi-OS support: Windows® 10, Linux® 64-bit, or macOS®
- USB Type-A or USB Type-C® to Micro-B cable

Note: macOS® is a trademark of Apple Inc., registered in the U.S. and other countries and regions.
Linux® is a registered trademark of Linus Torvalds.
Windows is a trademark of the Microsoft group of companies.

3.2 Development toolchains

- IAR Systems® - IAR Embedded Workbench®⁽¹⁾
- Keil® - MDK-ARM⁽¹⁾
- STMicroelectronics - STM32CubeIDE

1. On Windows® only.

3.3 Demonstration software

The demonstration software, included in the STM32Cube MCU Package corresponding to the on-board microcontroller, is preloaded in the STM32 flash memory for easy demonstration of the device peripherals in standalone mode. The latest versions of the demonstration source code and associated documentation can be downloaded from www.st.com.

4 Conventions

Table 3 provides the conventions used for the ON and OFF settings in the present document.

Table 3. ON/OFF convention

Convention	Definition
Jumper JPx ON	Jumper fitted
Jumper JPx OFF	Jumper not fitted
Jumper JPx [1-2]	Jumper fitted between Pin 1 and Pin 2
Solder bridge SBx ON	SBx connections closed by 0 Ω resistor
Solder bridge SBx OFF	SBx connections left open
Resistor Rx ON	Resistor soldered
Resistor Rx OFF	Resistor not soldered
Capacitor Cx ON	Capacitor soldered
Capacitor Cx OFF	Capacitor not soldered

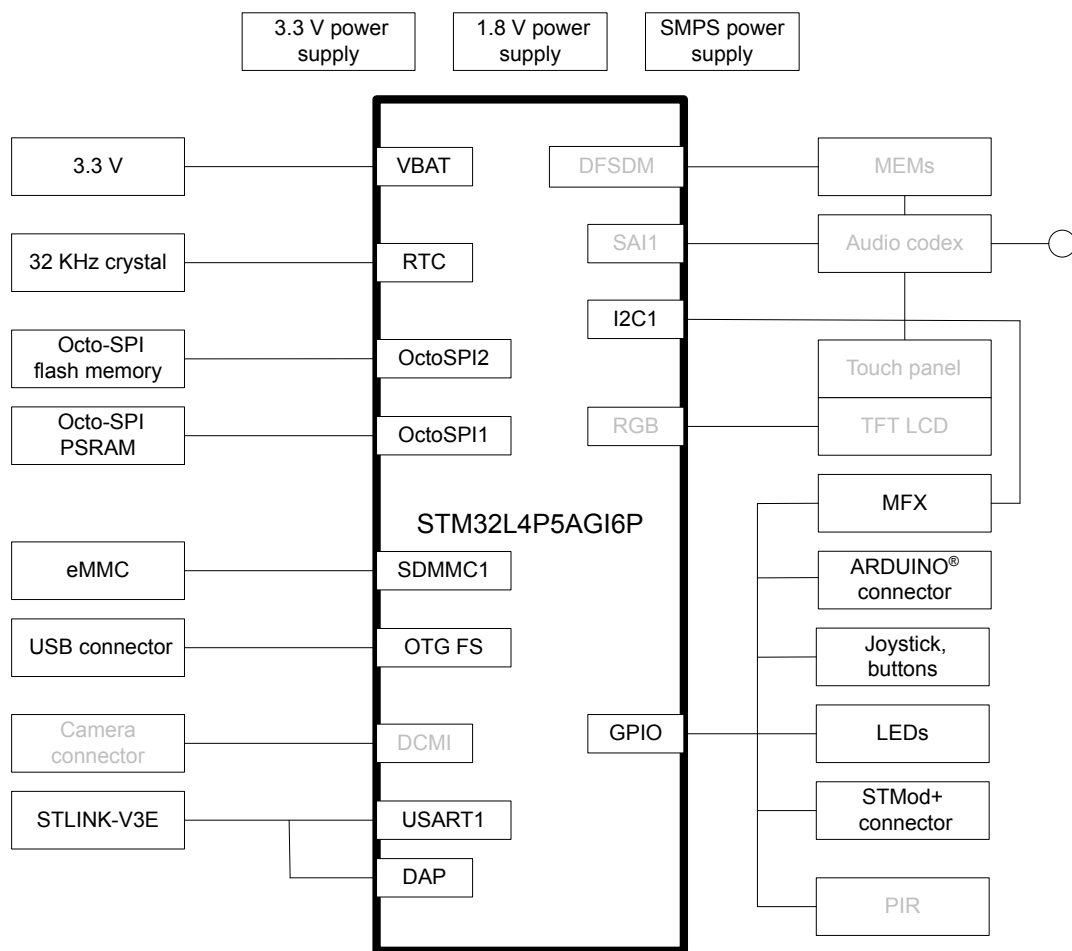
5 Delivery recommendations

Before the first use, check the board for any damage that might have occurred during shipment, and check that all socketed components are firmly fixed in their sockets and that none is loose in the plastic bag.

6 Hardware layout and configuration

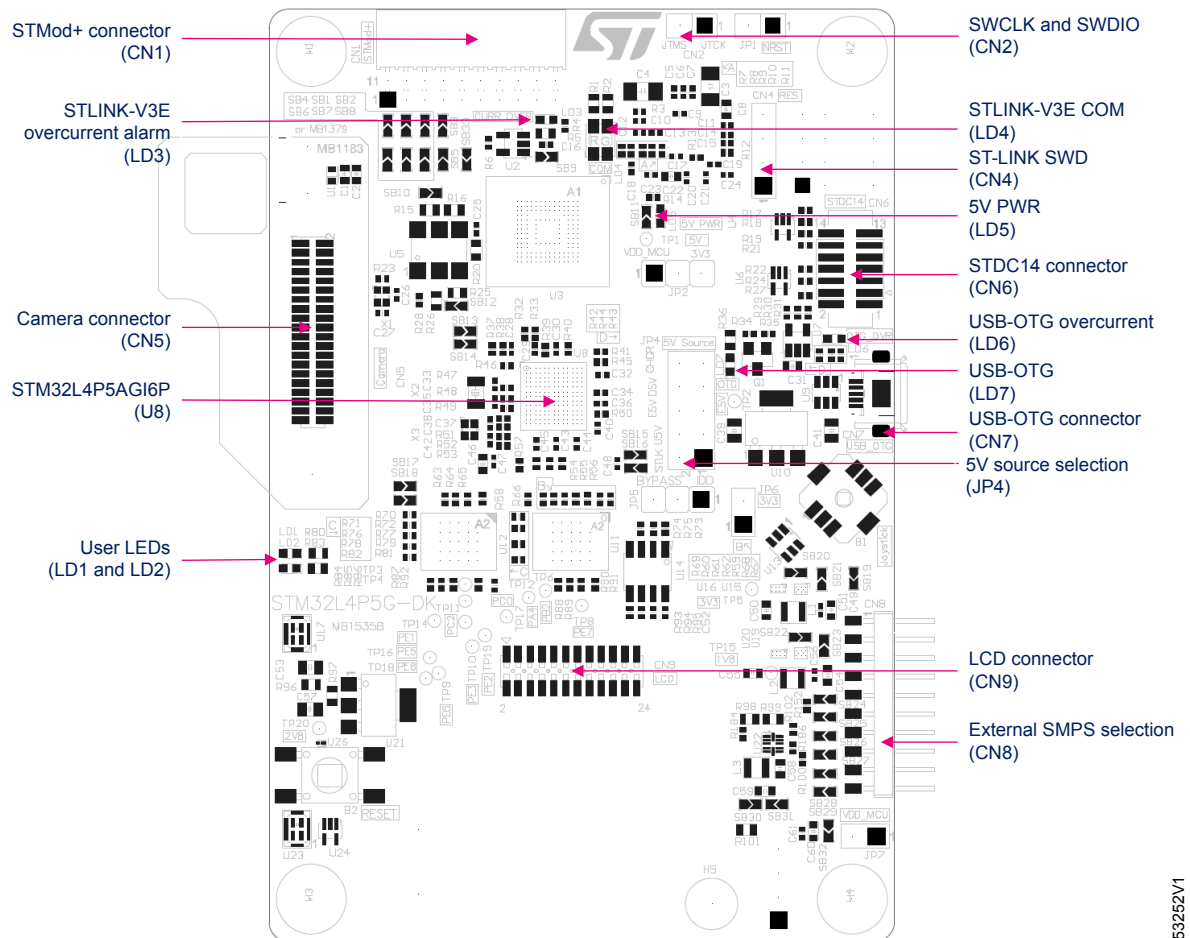
The STM32L4P5G-DK Discovery kit is designed around the STM32L4P5AGI6P target microcontroller. Figure 3 illustrates STM32L4P5AGI6P connections with peripheral components. Figure 4 shows the location of the main components on the top side of the Discovery board and Figure 5 shows the location of the main components on the bottom side of the Discovery board.

Figure 3. STM32L4P5G-DK hardware block diagram



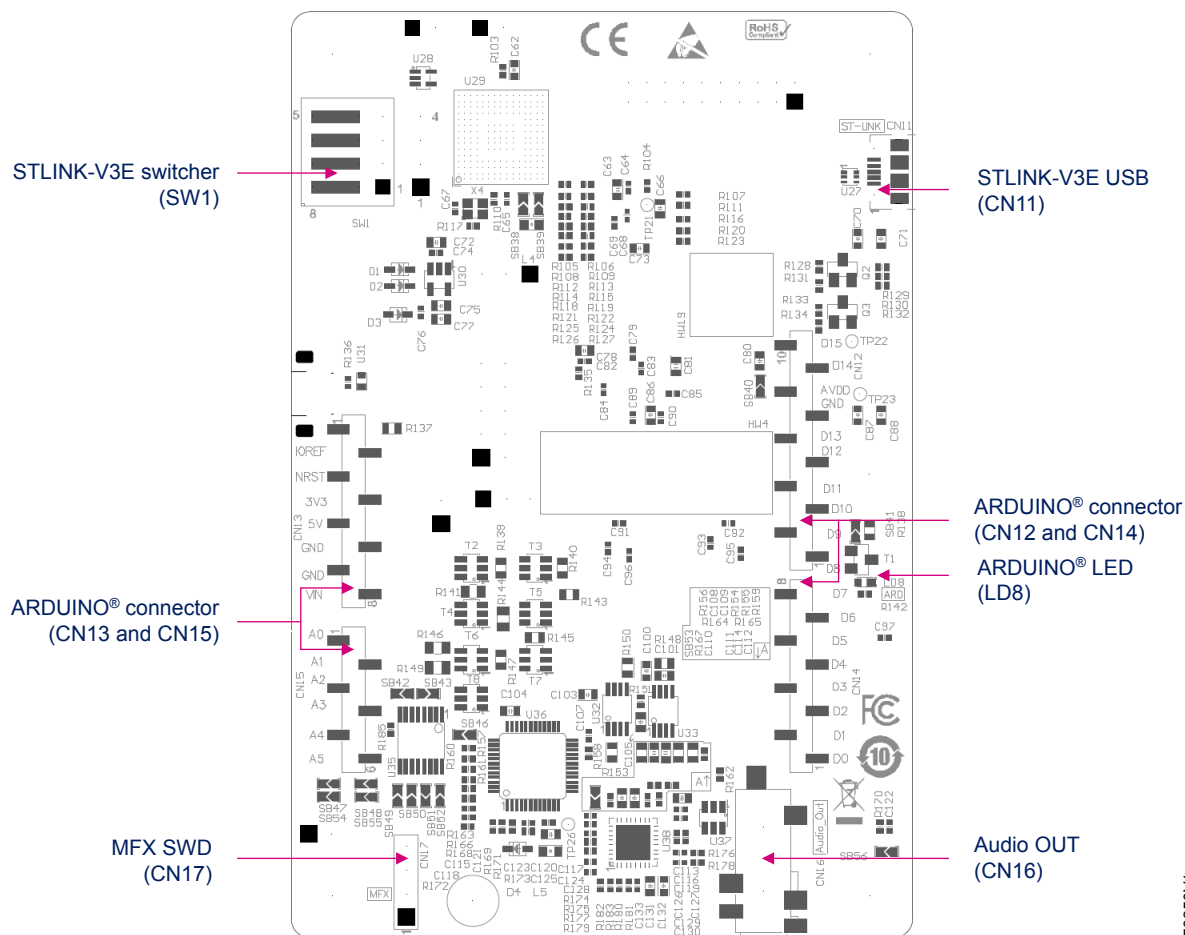
DT53251V1

Note: The gray features are not soldered. Only footprints are present on the board.

Figure 4. STM32L4P5G-DK PCB layout (top view)


DT53252V1

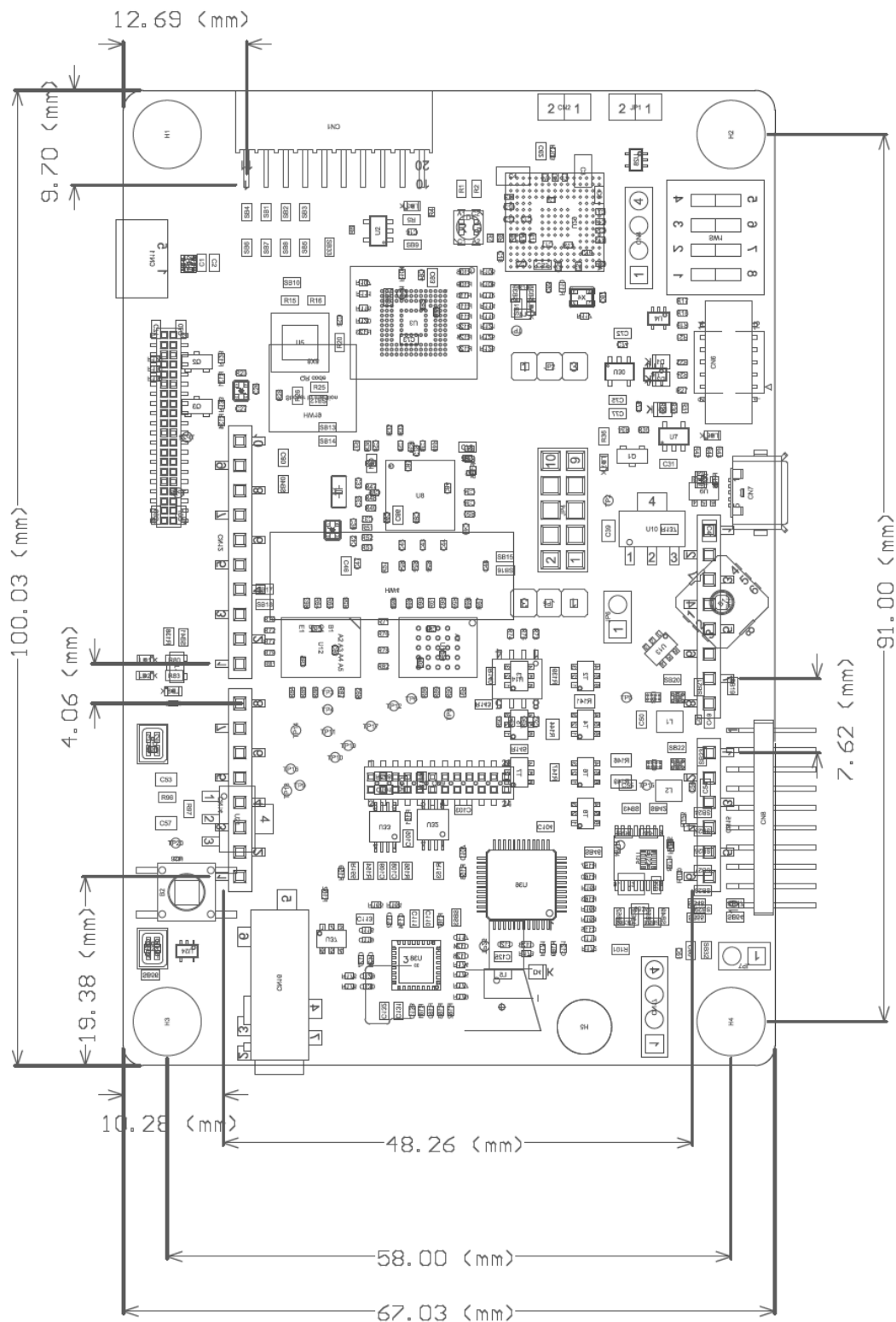
Figure 5. STM32L4P5G-DK PCB layout (bottom view)



DT53253V1

Figure 6 provides the mechanical dimensions of the STM32L4P5G-DK board.

Figure 6. STM32L4P5G-DK board mechanical dimensions (top view)



6.1 Embedded STLINK-V3E

6.1.1 Description

The STLINK-V3E facility for debugging and programming the STM32L4P5AGI6P is integrated into the STM32L4P5G-DK board. It supports the following features:

- Self-powered through a USB connector (Micro-B)
- USB 2.0 high-speed compatible interface
- Direct firmware update support (DFU)
- SWD and serial wire viewer (SWV) communication support
- Drag-and-drop flash memory programming
- Two colored LEDs: communication and power

The USB connector (CN11) can be used to power the STM32L4P5G-DK regardless of the STLINK-V3E facility used for debugging or programming STM32L4P5AGI6P. This holds also when the STLINK-V3E standalone tool is connected to CN6 and used for debugging or programming STM32L4P5AGI6P. [Section 6.2 Power supply](#) provides more detail about powering STM32L4P5G-DK. Refer to www.st.com for details about STLINK-V3E.

6.1.2 Drivers and firmware upgrade

The STLINK-V3E requires drivers to be installed on Windows®. It embeds firmware that needs to be updated to benefit from new functionalities or corrections. Refer for details to the technical note *Overview of ST-LINK derivatives* TN1235.

6.1.3 Virtual COM port

The serial interface USART2 (PA2 and PA3 ports) is directly available as a Virtual COM port of the PC, connected to the STLINK-V3E USB connector (CN11). The Virtual COM port settings are 115200 bps, 8-bit data, no parity, one stop bit, and no flow control.

6.2 Power supply

The STM32L4P5G-DK Discovery kit is designed to be powered from a 5 V DC power source. One of the following four 5 V DC power inputs can be used, upon appropriate board configuration:

- Micro-B USB receptacle (CN11) of STLINK-V3E with enumeration. Up to 500 mA can be supplied to the board (JP4 jumper setting on STLK on the silkscreen). This offers the enumeration feature described in [Section 6.2.1](#).
- Micro-B USB receptacle (CN11) of STLINK-V3E without enumeration. Up to 1000 mA can be supplied to the board directly without enumeration (JP4 jumper setting on CHGR on the silkscreen).
- Micro-AB USB receptacle (CN7) of the USB OTG FS interface. Marked USB_OTG on the board (JP4 jumper setting on U5V on the silkscreen). Up to 500 mA can be supplied to the board in this way.
- 7 to 12 V DC power from CN13 pin8: Named VIN on silkscreen, the extension connectors for ARDUINO® Uno shields (JP4 setting on external power source on silkscreen (E5V)).

The LD5 green LED turns on when the voltage on the power line marked as 5 V is present. All supply lines required for the operation of the components on the STM32L4P5G-DK are derived from that 5 V line.

[Table 4](#) describes the settings of all jumpers related to powering the STM32L4P5G-DK and extension board.

VDD_MCU is a STM32L4P5AGI6P digital supply voltage line. It can be connected to a fixed 3.3 V voltage supply.

6.2.1 Supplying the board through the STLINK-V3E USB port

To power the STM32L4P5G-DK this way, the PC USB Host gets connected to the Micro-B USB receptacle of the STM32L4P5G-DK board via a USB cable. The connection event starts with the USB enumeration procedure. In its initial phase, the current supply capability of the USB Host port is limited to 100 mA. It is enough because only the STLINK-V3E part of the STM32L4P5G-DK draws power at that time: The U2 power switch is set to the OFF position, which isolates the rest of the STM32L4P5G-DK from the power source. In the next phase of the enumeration procedure, the host PC informs the STLINK-V3E facility of its capability to supply current up to 300 mA. If the answer is positive, the STLINK-V3E sets the U2 power switch to the ON position to supply power to the rest of the STM32L4P5G-DK board. If the PC USB port is not capable of supplying current up to 300 mA, the CN13 pin8 (VIN) can be used to supply the board instead.

If a short circuit occurs on the board, the power switch protects the USB port of the host PC against a current demand exceeding 500 mA. In such an event, the LD3 LED lights up.

The STM32L4P5G-DK board can also be supplied from a USB power source not supporting enumeration, such as a USB charger. In this particular case, the JP4 jumper must be ON as shown in [Table 4. Power-supply-related jumper and solder bridge settings](#). STLINK-V3E bypasses power, regardless of enumeration procedure results, and passes the power unconditionally to the board.

The LD5 green LED turns on whenever the whole board is powered.

6.2.2 Using STLINK-V3E along with powering through external power

The board might require more than 300 mA of supply current. It cannot be supplied by a host PC connected to the STLINK-V3E USB port for debugging or programming the STM32L4P5AGI6P. In such a case, the board can be supplied through CN13 pin8 (marked VIN on the board).

To do this, it is important to power the board before connecting it with the host PC, which requires the following sequence to be respected:

1. Set the JP4 jumper in the E5V position,
2. Connect the external power source to CN13 pin8,
3. Check that the LD5 green LED is turned on,
4. Connect the host PC to the USB connector (CN11).

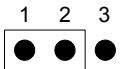
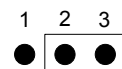
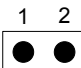
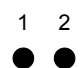
Caution: In case the board demands more than 300 mA and the host PC is connected via USB before the board is powered from CN13 pin8, there is a risk that the following events to occur (listed in reverse severity order):

1. The host PC can supply 300 mA (the enumeration succeeds) but it features no overcurrent protection on its USB port. It is damaged due to an overcurrent.
2. The host PC can supply 300 mA (the enumeration succeeds) and it has built-in overcurrent protection on its USB port, limiting or shutting down the power out of its USB port when the excessive current demand from the USB port is detected. This causes an operating failure of the STM32L4P5G-DK.
3. The host PC cannot supply 300 mA (the enumeration fails). The STLINK-V3E does not supply the rest of the necessary current from its USB port V_{BUS} line.

[Table 4](#) details the jumper and solder bridge settings used for the power supply configuration of the STM32L4P5G-DK.

Table 4. Power-supply-related jumper and solder bridge settings

Jumper/solder bridge	Setting	Configuration ⁽¹⁾
JP4 5 V source selector	 STLK U5V E5V D5V CHGR	Default setting. STM32L4P5G-DK is supplied through the Micro-B USB receptacle (CN11). It depends on the host PC USB port's powering capability declared in the enumeration.
	 STLK U5V E5V D5V CHGR	STM32L4P5G-DK is supplied through the Micro-AB USB receptacle (CN7).
	 STLK U5V E5V D5V CHGR	STM32L4P5G-DK is supplied through CN13 pin 8.
	 STLK U5V E5V D5V CHGR	STM32L4P5G-DK is supplied through CN13 pin 5.
	 STLK U5V E5V D5V CHGR	STM32L4P5G-DK is supplied through the Micro-B USB receptacle (CN11). This setting is applied to power the board through CN11 using a USB charger.

Jumper/solder bridge	Setting	Configuration ⁽¹⁾
R46 V _{BAT} connection	R46 ON	Default setting. V _{BAT} is connected to VDD_MCU.
	R46 OFF	V _{BAT} is not connected to VDD_MCU.
JP2 VDDA / VDDUSB connection		Default setting. VDDA and VDDUSB terminal of STM32L4P5AGI6P are connected to VDD_MCU.
		VDDA and VDDUSB terminals of STM32L4P5AGI6P are connected to 3V3.
JP6 3V3		Default setting. The board is connected to a fixed 3V3.
		The device is connected to measure current consumption.

1. On all STLINK-V3E boards, the target application is now able to run even if the STLINK-V3E is either not connected to a USB Host, or is powered through a USB charger or a nonenumerating USB Host.

6.2.3 SMPS power supply

V_{DD12} is the external power supply bypassing the internal regulator when connected to an external SMPS. The board is populated with a DC-DC regulator mounted on the U22 footprint, which allows to supply dynamically the V_{DD12} pins in Run, Sleep, and Stop 0 modes at a voltage range from 1.0 to 1.35 V by configured STM32L4P5AGI6P GPIOs (PH2, PH4, and PH13).

6.3 Clock references

Two clock references are available on the STM32L4P5G-DK for the STM32L4P5AGI6P target microcontroller.

- 32.768 kHz crystal X2, for embedded RTC
- 24 MHz crystal X3, for main clock generator (footprint only)

The main clock generation is possible via an internal RC oscillator (default) or from STCLK_MCO, disconnected by removing resistors R49, R51, and R52 when the internal RC clock is used.

6.4 Reset source

The general reset of the STM32L4P5G-DK Discovery kit is active LOW. Sources of reset are:

- B2 RESET button
- STDC14 connector (CN6), reset from debug tools
- ARDUINO® Uno shield board through CN13
- Embedded STLINK-V3E

6.5 Boot option

After reset, the STM32L4P5AGI6P MCU can boot from the following embedded memory locations:

- Main (user, nonprotected) flash memory
- System (protected) flash memory
- RAM, for debugging

The boot option is configured by setting PH3 (BOOT0) and the boot base address programmed in the nBOOT1, nBOOT0, and nSWBOOT0 of FLASH_OTPR option bytes.

Table 5 describes the hardware configuration for the Boot mode.

Table 5. Boot selection switch

Resistor	Setting ⁽¹⁾	Description
R37 and R38	R37 OFF R38 ON	The BOOT0 line is tied LOW. STM32L4P5AGI6P boots from the main flash memory.
	R37 ON R38 OFF	The BOOT0 line is tied HIGH. STM32L4P5AGI6P boots from system flash memory (nBOOT1 bit of FLASH_OPTR register is set HIGH) or from RAM (nBOOT1 is set to LOW).

1. The default configuration is shown in bold.

6.6 Audio (footprint only)

An audio codec, connected to the SAI interface of STM32L4P5AGI6P, offers the possibility to connect a stereo headphone or headset with a mono analog microphone. The codec communicates with STM32L4P5AGI6P via the I2C1 bus, which is shared with MFX and JDI LCD.

The I²C-bus addresses of the codec are 0x95 and 0x94.

6.7 Digital microphones (footprint only)

Two MEMS digital microphones, U17 and U23, are available on STM32L4P5G-DK. The two microphones are located at a distance of 21 mm from each other. They are connected to the STM32 DFSDM by the PE9 port, generating the clock, and by the PD3 port, collecting the PDM interleaved data.

6.8 USB FS port

The STM32L4P5G-DK Discovery kit supports USB OTG FS, full-speed communication, via the USB Micro-AB receptacle (CN7) and the USB power switch (U7) connected to V_{BUS}.

An LD7 green LED lights up in one of the following cases:

- The power switch (U7) is ON and STM32L4P5G-DK works as a USB Host.
- V_{BUS} is powered by another USB Host when STM32L4P5G-DK works as a USB Device.

The LD6 red LED is lit in case of overcurrent.

6.9 User LEDs

Two general-purpose color LEDs, LD1 and LD2, are available as light indicators. Each LED is in the light-emitting state with a low level of the corresponding ports of the STM32L4P5AGI6P MCU.

6.10 Physical input devices

The STM32L4P5G-DK board provides several input devices for physical human control.

- A four-way joystick controller with a select key (B1)
- A reset button (B2)

6.11 Octo-SPI device

U12, a 512-Mbit Octo-SPI user flash memory, is connected to the OCTOSPIM_P2 interface of STM32L4P5AGI6P.

U11, a 64-Mbit Octo-SPI PSRAM memory, is connected to the OCTOSPIM_P1 interface of STM32L4P5AGI6P.

By default, U14 is the footprint of a Quad-SPI interface for the SO-8 package. Note that U11 and U14 share the same GPIO port for Octo-SPI and Quad-SPI interface usage.

6.12 eMMC

The STM32L4P5G-DK Discovery kit embeds a 4-Gbyte eMMC chip. It is connected to the STM32L4P5AGI6P SDMMC1 port.

6.13 MFX MCU

The MFX MCU is used as an MFX multifunction expander and an IDD measurement calculator.

6.13.1 MFX

The MFX circuit on the STM32L4P5G-DK Discovery kit acts as an I/O expander. The communication interface between MFX and STM32L4P5AGI6P is the I2C1 bus. The signals connected to MFX are listed in [Table 6](#).

Table 6. MFX signals

MFX pin number	MFX pin name	MFX function	STM32L4P5G-DK function	MFX direction	Terminal device
15	PA5	MFX_GPIO5	Camera_Flash	Output	Camera
16	PA6	MFX_GPIO6	Camera_STANDBY	Output	Camera
17	PA7	MFX_GPIO7	Camera_PLUG	Input	Camera
18	PB0	MFX_GPIO0	USB_PSON	Output	USB OTG FS
19	PB1	MFX_GPIO1	USB_OVRCCR	Input	USB OTG FS
20	PB2	MFX_GPIO2	Audio_RST	Input	Audio
26	PB13	MFX_GPIO13	-	-	-
27	PB14	MFX_GPIO14	-	-	-
28	PB15	MFX_GPIO15	-	-	-
29	PA8	MFX_GPIO8	-	-	-
30	PA9	MFX_GPIO9	-	-	-
31	PA10	MFX_GPIO10	-	-	-
32	PA11	MFX_GPIO11	-	-	-
33	PA12	MFX_GPIO12	-	-	-
39	PB3	MFX_GPIO3	Camera_RST	Output	Camera
40	PB4	MFX_GPIO4	Camera_Shutter	Output	Camera

6.13.2 IDD measurement

STM32L4P5AGI6P has a built-in circuit to measure its current consumption (IDD) in Run and Low-power modes, except Shutdown mode. It is strongly recommended that the MCU supply voltage (VDD_MCU line) does not exceed 3.3 V because there are components on the STM32L4P5G-DK supplied from 3.3 V that communicate with the MCU through I/O ports. Voltage exceeding 3.3 V on the MCU output port may inject current into 3.3 V supplied peripheral I/Os and distort the MCU current-consumption measurement.

[Table 7](#) shows the setting of the jumper associated with the IDD measurement on the board.

Table 7. IDD measurement-related jumper setting

Jumper	Setting ⁽¹⁾	Configuration
JP5	JP5 [1-2]	STM32L4P5AGI6P has a built-in circuit to measure its current consumption.
	JP5 [2-3]	IDD measurement is not available, bypass mode only for STM32L4P5AGI6P VDD_MCU power supply.

1. The default configuration is shown in bold.

6.14 LCD interface (connector only)

STM32L4P5G-DK supports a 6-bit RGB interface and a touch-panel interface. The users may develop their daughterboard, plugged into CN9, for application.

6.15 Camera connector (CN5) (footprint only)

A connector for 8- to 12-bit DCMI signals on the STM32L4P5G-DK Discovery kit supports a camera module daughterboard MB1183 or MB1379. The camera shares the I2C4 bus with the STMod+ and ARDUINO® connectors.

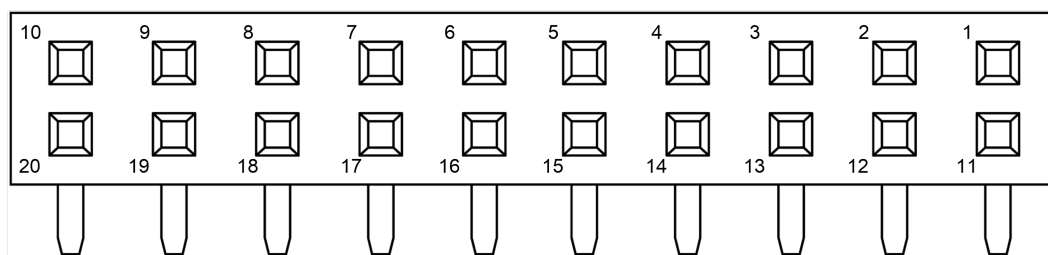
7 Connectors

7.1 STMod+ connector (CN1)

The standard 20-pin STMod+ connector is available on the STM32L4P5G-DK Discovery kit to increase compatibility with external boards and modules from the ecosystem of microcontrollers. By default, it is designed to support an ST-dedicated fanout board to connect different modules or board extensions from different manufacturers. The fanout board also embeds a 3.3 V regulator and I²C level shifter (footprint only). Schematics of the fanout board are available at the www.st.com website.

For details about the STMod+ interface, refer to the technical note *STMod+ interface specification* TN1238.

Figure 7. STMod+ connector (CN1) front view



Front view

Table 8. STMod+ connector (CN1) pinout

Pin number	Description	Pin number	Description
1	SPI1_NSS/USART3_CTS (PG5/PD11)	11	INT (PD10)
2	SPI1_MOSI/ USART3_TX (PG4/PD8)	12	RESET (PF11)
3	SPI1_MISO/ USART3_RX (PG3/PD9)	13	ADC (PA5)
4	SPI1_SCK/ USART3_RTS (PG2/PD12)	14	PWM (PG11)
5	GND	15	5 V
6	5 V	16	GND
7	I2C4_SCL (PF14)	17	DFSDM1-CKOUT (PF10)
8	SPI1_MOSIs (PE15)	18	DFSDM1- DATIN1 (PB12)
9	SPI1_MISOs (PE14)	19	GPIO3 (PD0)
10	I2C4_SDA (PF15)	20	GPIO4 (PD1)

7.2 STLINK-V3E programming connector (CN4)

This connector is only used for embedded STLINK-V3E programming during board manufacturing. It is not populated by default and not for the end-user.

7.3 Camera module connector (footprint only) (CN5)

Figure 8. Camera module connector (CN5) top view

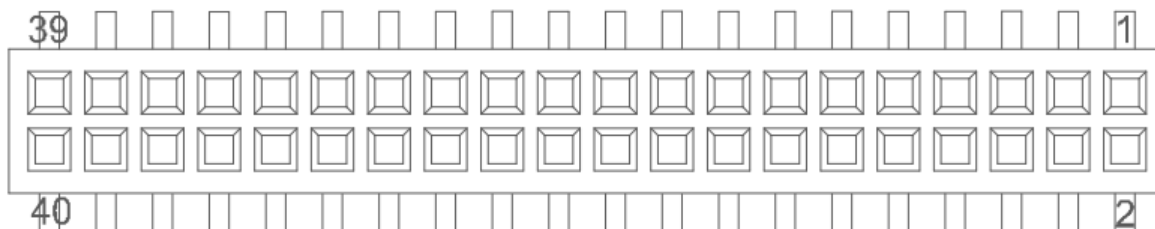


Table 9. Camera module connector (CN5) pinout

Pin number	Description	Pin number	Description
1	1V8	2	1V8
3	GND	4	GND
5	DCMI_D10 (PI3)	6	DCMI_D11 (PH15)
7	GND	8	GND
9	DCMI_D8 (PH6)	10	DCMI_D9 (PH7)
11	GND	12	GND
13	I2C4_SCL (PF14)	14	I2C4_SDA (PF15)
15	Camera_PLUG (MFX GPIO7)	16	GND
17	Camera_RST (MFX GPIO3)	18	-
19	Camera_STANDBY (MFX GPIO6)	20	Camera_CLK
21	GND	22	GND
23	DCMI_D0 (PH9)	24	DCMI_D1 (PH10)
25	DCMI_D2 (PE0)	26	DCMI_D3 (PH12)
27	DCMI_D4(PH14)	28	DCMI_D5 (PI4)
29	DCMI_D6 (PI6)	30	DCMI_D7 (PI7)
31	DCMI_HSYNC (PH8)	32	DCMI_VSYNC (PI5)
33	DCMI_PIXCLK (PH5)	34	-
35	Camera_Shutter (MFX GPIO4)	36	Camera_Flash (MFX GPIO5)
37	GND	38	GND
39	2V8	40	2V8

7.4 STDC14 connector (CN6)

Figure 9. STDC14 debugging connector (CN6) top view

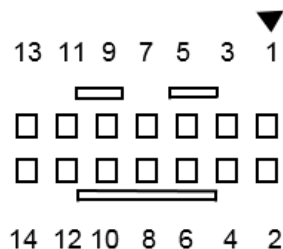


Table 10. STDC14 debugging connector (CN6) pinout

Terminal	Function/MCU port	Terminal	Function/MCU port
1	-	2	-
3	VDD	4	SWDIO/TMS (PA13)
5	GND	6	SWDCLK/TCK (PA14)
7	GND	8	SWO/TDO (PB3)
9	-	10	-
11	GND	12	RESET#
13	VCP_RX_STDC (PA3)	14	VCP_TX_STDC (PA2)

7.5 USB OTG FS Micro-AB connector (CN7)

A USB OTG full-speed communication link is available at the USB Micro-AB receptacle connector (CN7). The Micro-AB receptacle enables USB Host and Device features.

Figure 10. USB OTG FS Micro-AB connector (CN7) front view

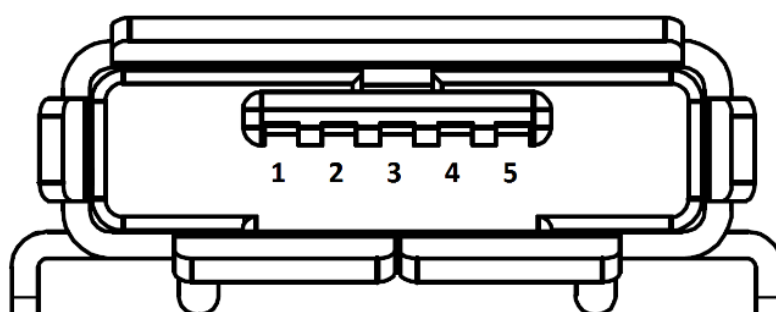


Table 11. USB OTG FS Micro-AB connector (CN7) pinout

Pin number	Description	Pin number	Description
1	VBUS	4	ID
2	DM	5	GND
3	DP	-	-

7.6 STLINK-V3E USB Micro-B connector (CN11)

The USB connector (CN11) is used to connect the onboard STLINK-V3E facility to the PC for flashing and debugging software.

Figure 11. Micro-B connector (CN11) top view

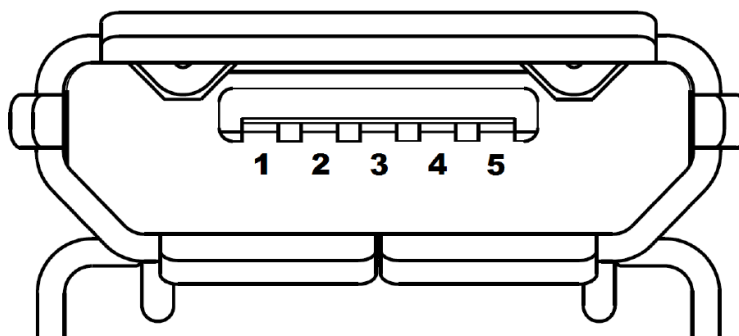


Table 12. USB Micro-B connector (CN11) pinout

Terminal	Description	Terminal	Description
1	VBUS (power)	4	ID
2	DM	5	GND
3	DP	6 - 11	Shield

7.7

ARDUINO® Uno V3 connectors (CN12, CN13, CN14, and CN15)

ARDUINO® Uno V3 connectors (CN12, CN13, CN14, and CN15) are female connectors compatible with ARDUINO® Uno revision 3 standard. Most of the shields designed for ARDUINO® Uno V3 fit the STM32L4P5G-DK board.

Table 13. ARDUINO® Uno V3 compatible connector pinout

Left connectors					Right connectors				
CN number	Pin number	Pin name	MCU pin	Function	Function	MCU pin	Pin name	Pin number	CN number
-					I2C4_SCL	PF14	D15	10	CN12 digital
					I2C4_SDA	PF15	D14	9	
					AREF	-	AVDD	8	
					Ground	-	GND	7	
CN13 power	1	5V_EXT	-	5 V output	SPI2_SCK	PB13	D13	6	
	2	IOREF	-	3.3 V Ref.	SPI2_MISO	PB14	D12	5	
	3	RESET	NRST	RESET	TIM1_CH3N SPI2_MOSI	PB15	D11	4	
	4	+3V3	-	3.3 V ⁽¹⁾ input/output	TIM5_CH4 SPI2_NSS	PI0	D10	3	
	5	+5 V	-	5 V output	TIM8_CH4	PI2	D9	2	
	6	GND	-	Ground	-	PD1	D8	1	
	7	GND	-	Ground	-				
	8	VIN	-	Power input ⁽²⁾	-	PD0	D7	8	CN14 digital
-					TIM4_CH4	PD15	D6	7	
CN15 analog	1	A0	PC1	ADC12_IN2	TIM4_CH3	PD14	D5	6	
	2	A1	PA1	ADC12_IN6	-	PF13	D4	5	
	3	A2	PB0	ADC12_IN15	TIM4_CH2	PD13	D3	4	
	4	A3	PB1	ADC3_IN16	-	PF11	D2	3	
	5	A4	PC4 PF15	ADC3_IN13 I2C4_SDA ⁽³⁾	USART3_TX	PB10	D1	2	
	6	A5	PC5 PF14	ADC12_IN10 I2C4_SCL ⁽³⁾	USART3_RX	PB11	D0	1	

1. The +3V3 on ARD connector pin4 of CN13 is not a power input for the STM32L4P5G-DK board, to simplify the power architecture.
2. The external voltage applied to pin VIN on pin8 of CN13 should be in the range of 6 to 9 V at 25°C ambient temperature. If a higher voltage is applied on the regulator U10, it may overheat and be damaged.
3. By default, CN15 pins 5 and 6 are connected to ADC MCU input ports PC4 and PC5 respectively, thanks to the configuration of solder bridges: SB48 and SB54 ON, and SB47 and SB55 OFF. In case it is necessary to connect the I²C interface signals on CN15 pins 5 and 6 instead of ADC inputs, the user must put SB48 and SB54 OFF, and SB47 and SB55 ON.

Before using any ARDUINO® Uno V3 shield, it is important to refer to [Section 6.2](#) for a correct configuration of JP4.

Caution:

The STM32 MCU I/Os are 3.3 V compatible instead of 5 V for ARDUINO® Uno V3.

7.8 Audio green jack - line out (footprint only) (CN16)

A 3.5 mm stereo audio green jack output (CN16) is available on the STM32L4P5G-DK board to support headphones.

Figure 12. Stereo headset with a microphone jack (CN16)

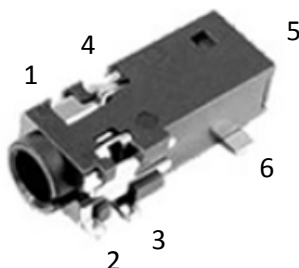


Table 14. Onboard audio jack connector (CN16) pinout

Pin number	Description	Stereo headset with microphone pinning	
3	GND	GND	
4	OUT_Right	SPK_R (33 Ω typical)	
6	OUT_Left	SPK_L (33 Ω typical)	
1	NC	-	
2	MIC_IN	MIC	
5	NC	-	

7.9 MFX programming connector (CN17)

This connector is only used for embedded MFX (multifunction eXpander) programming during board manufacturing. It is not populated by default and is not for the end user.

7.10 LCD connector (CN9)

Figure 13. LCD connector (CN9) top view

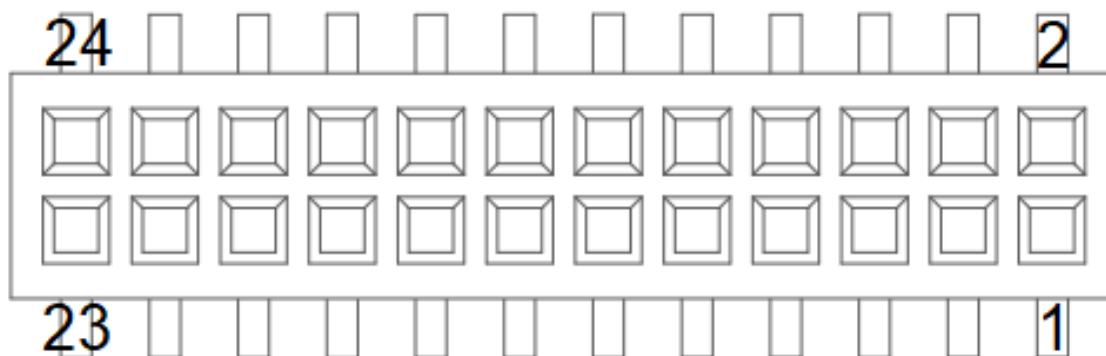


Table 15. LCD connector (CN9) pinout

Terminal	Terminal name	MCU port	Terminal	Terminal name	MCU port
1	LCD_DE	PC0	2	LCD_R7	PE2
3	LCD_DISP	PG8	4	LCD_R6	PE3
5	LCD_HSYNC	PC2	6	LCD_G7	PE5
7	LCD_VSYNC	PE1	8	LCD_G6	PE6
9	LCD_CLK	PA4	10	LCD_B7	PE8
11	GND	-	12	LCD_B6	PE7
13	TP_INT	PI1	14	GND	-
15	TP_RST	PB4	16	LCD_PWM_EN	PA15
17	I2C1_SDA	PB7	18	LCD_RTC_OUT2	PB2
19	I2C1_SCL	PB6	20	BL_EN	PD13
21	3V3	-	22	5 V	-
23	GND	-	24	GND	-

8 STM32L4P5G-DK I/O assignment

Table 16. STM32L4P5G-DK I/O assignment

Pin name	UFBGA169 + ext SMPS	Type	Input level	STM32 pinout assignment
PI10	A1	I/O	FT	JOY_RIGHT
PH2	A2	I/O	FT	SMPS_V1
VDD	A3	S	-	-
PE0	A4	I/O	FT	DCMI_D2/D2
PB4	A5	I/O	FT_fa	TP_RST
PB3	A6	I/O	FT_la	JTDO/TRACESWO
VSS	A7	S	-	-
VDD	A8	S	-	-
PA15	A9	I/O	FT	LCD_PWM_EN
PA14	A10	I/O	FT	JTCK/SWCLK
PA13	A11	I/O	FT	JTMS/SWDIO
PI0	A12	I/O	FT	ARD_SPI2_NSS_TIM5_CH4
PH14	A13	I/O	FT	DCMI_D4/D4
PI9	B1	I/O	FT	JOY_DOWN
PI7	B2	I/O	FT	DCMI_D7/D7
VSS	B3	S	-	-
PE1	B4	I/O	FT	LCD_VSYNC
PB5	B5	I/O	FT_la	SAI1_SD_B
VDDIO2	B6	S	-	-
PG9	B7	I/O	FT_s	OCTOSPIM_P2_IO6
PD0	B8	I/O	FT	ARD_D7_STMOD_GPIO3
PI6	B9	I/O	FT	DCMI_D6/D6
PI2	B10	I/O	FT	ARD_TIM8_CH4
PI1	B11	I/O	FT	TP_INT
PH15	B12	I/O	FT	SMPS_SW DCMI_D11/D11
PH12	B13	I/O	FT	DCMI_D3/D3
VDD	C1	S	-	-
VSS	C2	S	-	-
PI11	C3	I/O	FT	JOY_LEFT
PB8	C4	I/O	FT_fl	SDMMC1_D4
PB6	C5	I/O	FT_fa	I2C1_SCL
VDD12	C6	-	-	-
PD4	C7	I/O	FT	OCTOSPIM_P1_IO4
PD1	C8	I/O	FT	ARD_D8_STMOD_GPIO4
PH13	C9	I/O	FT	SMPS_V3
PI3	C10	I/O	FT	DCMI_D10/D10
PI8	C11	I/O	FT	JOY_UP

Pin name	UFBGA169 + ext SMPS	Type	Input level	STM32 pinout assignment
VSS	C12	S	-	-
VDD	C13	S	-	-
PE4	D1	I/O	FT	SAI1_FS_A
PE3	D2	I/O	FT_I	LCD_R6
PE2	D3	I/O	FT_I	LCD_R7
PB9	D4	I/O	FT_fl	SDMMC1_D5
PB7	D5	I/O	FT_fla	I2C1_SDA
PG10	D6	I/O	FT_s	OCTOSPIM_P2_IO7
PD5	D7	I/O	FT	OCTOSPIM_P1_IO5
PD2	D8	I/O	FT	SDMMC1_CMD
PC10	D9	I/O	FT	SDMMC1_D2
PI4	D10	I/O	FT	DCMI_D5/D5
PH9	D11	I/O	FT	DCMI_D0/D0
PH7	D12	I/O	FT_f	SMPS_PG DCMI_D9/D9
PA12	D13	I/O	FT_u	OTG_FS_DP
PC13	E1	I/O	FT	JOY_SEL
VBAT	E2	S	-	-
PE6	E3	I/O	FT	LCD_G6
PE5	E4	I/O	FT	LCD_G7
PH3-BOOT0	E5	I/O	FT	BOOT0
PG11	E6	I/O	FT_s	STMOD_TIM15_CH2
PD6	E7	I/O	FT	SAI1_SD_A
PD3	E8	I/O	FT	DFSDM1_DATIN0
PC11	E9	I/O	FT	SDMMC1_D3
PI5	E10	I/O	FT	DCMI_VSYNC/RDY
PH6	E11	I/O	FT	SMPS_EN DCMI_D8/D8
VDDUSB	E12	S	-	-
PA11	E13	I/O	FT_u	OTG_FS_DM
PC14-OSC32_IN	F1	I/O	FT	OSC32_IN
VSS	F2	S	-	-
PF2	F3	I/O	FT	OCTOSPIM_P2_IO2
PF1	F4	I/O	FT_f	OCTOSPIM_P2_IO1
PF0	F5	I/O	FT_f	OCTOSPIM_P2_IO0
PG12	F6	I/O	FT_s	OCTOSPIM_P2_NCS
PD7	F7	I/O	FT	OCTOSPIM_P1_IO7
PC12	F8	I/O	FT	SDMMC1_CK
PA10	F9	I/O	FT_flu	OTG_FS_ID
PA9	F10	I/O	FT_flu	OTG_FS_VBUS
PC6	F11	I/O	FT	SDMMC1_D6
VDDIO2	F12	S	-	-
VSS	F13	S	-	-

Pin name	UFBGA169 + ext SMPS	Type	Input level	STM32 pinout assignment
PC15-OSC32_OUT	G1	I/O	FT	OSC32_OUT
VDD	G2	S	-	-
PF3	G3	I/O	FT	OCTOSPIM_P2_IO3
PF4	G4	I/O	FT	OCTOSPIM_P2_CLK
PF5	G5	I/O	FT	MFX_WAKEUP
PG14	G6	I/O	FT_fs	LED2
PG13	G7	I/O	FT_fs	LED1
PA8	G8	I/O	FT_f	SAI1_SCK_A
PC9	G9	I/O	FT_fl	SDMMC1_D1
PC8	G10	I/O	FT	SDMMC1_D0
PG6	G11	I/O	FT_s	OCTOSPIM_P1_DQS
PC7	G12	I/O	FT	SDMMC1_D7
VDD	G13	S	-	-
PH0-OSC_IN	H1	I/O	FT	OSC_IN
VSS	H2	S	-	-
NRST	H3	I-O	RST	NRST
PF10	H4	I/O	FT	STMOD_DFSDM1_CKOUT
PC4	H5	I/O	FT_a	ARD_ADC12_IN13
PG1	H6	I/O	FT	OCTOSPIM_P2_IO5
PE10	H7	I/O	FT	OCTOSPIM_P1_CLK
PB11	H8	I/O	FT_fl	ARD_USART3_RX
PG8	H9	I/O	FT_fs	LCD_DISP
PG7	H10	I/O	FT_fs	SAI1_MCLK_A
PD15	H11	I/O	FT	ARD_TIM4_CH4
VSS	H12	S	-	-
VDD	H13	S	-	-
PH1-OSC_OUT	J1	I/O	FT	OSC_OUT
PC0	J2	I/O	FT fla	LCD_DE
PC1	J3	I/O	FT fla	ARD_ADC12_IN2
PC2	J4	I/O	FT la	LCD_HSYNC
PC5	J5	I/O	FT_a	PIR_WAKEUP
PG0	J6	I/O	FT	OCTOSPIM_P2_IO4
PE9	J7	I/O	FT	DFSDM1_CKOUT
PE15	J8	I/O	FT	STMOD_SPI1_MOSI2
PG5	J9	I/O	FT_s	STMOD_SPI1_NSS
PG4	J10	I/O	FT_s	STMOD_SPI1_MOSI
PG3	J11	I/O	FT_s	STMOD_SPI1_MISO
PG2	J12	I/O	FT_s	STMOD_SPI1_SCK
PD10	J13	I/O	FT	STMOD_INT
PC3	K1	I/O	FT_a	OCTOSPIM_P1_IO6
VSSA/VREF-	K2	S	-	-

Pin name	UFBGA169 + ext SMPS	Type	Input level	STM32 pinout assignment
PA0	K3	I/O	FT_a	MF_X_IRQ_OUT
PA5	K4	I/O	TT_a	ARD_STMOD_ADC12_IN10
PB0	K5	I/O	TT_la	ARD_ADC12_IN15
PF15	K6	I/O	FT_f	I2C4_SDA
PE8	K7	I/O	FT	LCD_B7
PE14	K8	I/O	FT	STMOD_SPI1_MISO2
PH4	K9	I/O	FT_f	SMPS_V2
PD14	K10	I/O	FT	ARD_TIM4_CH3
PD12	K11	I/O	FT_fl	STMOD_USART3_RTS_DE
PD11	K12	I/O	FT	STMOD_USART3_CTS_NSS
PD13	K13	I/O	FT_fl	ARD_TIM4_CH2 LPTIM2_OUT
VREF+	L1	S	-	-
VDDA	L2	S	-	-
PA4	L3	I/O	TT_a	LCD_CLK
PA7	L4	I/O	FT fla	OCTOSPIM_P1_IO2
PB1	L5	I/O	FT_a	ARD_ADC12_IN16
PF14	L6	I/O	FT_f	I2C4_SCL
PE7	L7	I/O	FT	LCD_B6
PE13	L8	I/O	FT	OCTOSPIM_P1_IO1
PH5	L9	I/O	FT_f	DCMI_PIXCLK/PDCK
PD9	L10	I/O	FT	STMOD_USART3_RX
PD8	L11	I/O	FT	STMOD_USART3_TX
VDD	L12	S	-	-
VSS	L13	S	-	-
OPAMP1_VINM	M1	I	TT	-
PA3	M2	I/O	TT_a	USART2_RX
VSS	M3	S	-	-
PA6	M4	I/O	FT_a	OCTOSPIM_P1_IO3
PF11	M5	I/O	FT	ARD_D2_STMOD_RST
PF13	M6	I/O	FT	ARD_D4_PIR_OEN
VSS	M7	S	-	-
PE12	M8	I/O	FT	OCTOSPIM_P1_IO0
PH10	M9	I/O	FT	DCMI_D1/D1
VDD12	M10	S	-	-
VSS	M11	S	-	-
PB15	M12	I/O	FT	ARD_SPI2_MOSI_TIM1_CH3N
PB14	M13	I/O	FT_fl	ARD_SPI2_MISO
PA2	N1	I/O	FT_la	USART2_TX
PA1	N2	I/O	FT_la	ARD_ADC12_IN6
VDD	N3	S	-	-
OPAMP2_VINM	N4	I	TT	-

Pin name	UFBGA169 + ext SMPS	Type	Input level	STM32 pinout assignment
PB2	N5	I/O	FT_a	LCD_RTC_OUT2
PF12	N6	I/O	FT	OCTOSPIM_P2_DQS
VDD	N7	S	-	-
PE11	N8	I/O	FT	OCTOSPIM_P1_NCS
PB10	N9	I/O	FT_fl	ARD_USART3_TX
PH8	N10	I/O	FT_f	DCMI_HSYNC/DE
VDD	N11	S	-	-
PB12	N12	I/O	FT	STMOD_DFSDM1_DATIN1
PB13	N13	I/O	FT_fl	ARD_SPI2_SCK

9 STM32L4P5G-DK product information

9.1 Product marking

The stickers located on the top or bottom side of all PCBs provide product information:

- First sticker: product order code and product identification, generally placed on the main board featuring the target device.

Example:

Product order code
Product identification

- Second sticker: board reference with revision and serial number, available on each PCB.

Example:

MBxxxx-Variant-yyz syywwxxxxx	
----------------------------------	---

On the first sticker, the first line provides the product order code, and the second line the product identification.

On the second sticker, the first line has the following format: “MBxxxx-Variant-yyz”, where “MBxxxx” is the board reference, “Variant” (optional) identifies the mounting variant when several exist, “y” is the PCB revision, and “zz” is the assembly revision, for example B01. The second line shows the board serial number used for traceability.

Parts marked as “ES” or “E” are not yet qualified and therefore not approved for use in production. ST is not responsible for any consequences resulting from such use. In no event will ST be liable for the customer using any of these engineering samples in production. ST’s Quality department must be contacted prior to any decision to use these engineering samples to run a qualification activity.

“ES” or “E” marking examples of location:

- On the targeted STM32 that is soldered on the board (for an illustration of STM32 marking, refer to the STM32 datasheet *Package information* paragraph at the www.st.com website).
- Next to the evaluation tool ordering part number that is stuck, or silk-screen printed on the board.

Some boards feature a specific STM32 device version, which allows the operation of any bundled commercial stack/library available. This STM32 device shows a “U” marking option at the end of the standard part number and is not available for sales.

To use the same commercial stack in their applications, the developers might need to purchase a part number specific to this stack/library. The price of those part numbers includes the stack/library royalties.

9.2 STM32L4P5G-DK product history

Table 17. Product history

Order code	Product identification	Product details	Product change description	Product limitations
STM32L4P5G-DK	DK32L4P5G\$AT1	MCU: • STM32L4P5AGI6P silicon revision "Z"	Initial revision	No limitation
		MCU errata sheet: • STM32L4P5xx/Q5xx device errata (ES0510)		
		Boards: • MB1535-L4P5G-B01 (main board) • MB1280-3V3-C01 (fanout board)		
	DK32L4P5G\$AT2	MCU: • STM32L4P5AGI6P silicon revision "Z"	<ul style="list-style-type: none"> Packaging: plastic blister replaced by a carton box Main board revision changed 	No limitation
		MCU errata sheet: • STM32L4P5xx/Q5xx device errata (ES0510)		
		Boards: • MB1535-L4P5G-B02 (main board) • MB1280-3V3-C01 (fanout board)		

9.3 Board revision history

Table 18. Board revision history

Board reference	Board variant and revision	Board change description	Board limitations
MB1535 (main board)	L4P5G-B01	Initial revision	No limitation
	L4P5G-B02	Several part references are updated due to obsolescence (such as U3 Micron Technology-MTFC4GACAJCN-1M replaced with new Memory KIOXIA-THGBMTG5D1LBAI with no impact on firmware, refer to the bill of materials for details).	No limitation
MB1280 (fanout board)	DEFAULT-B01	Initial revision	No limitation
	3V3-C01	Updated: <ul style="list-style-type: none"> Several part references due to obsolescence (such as transistors or others, refer to the bill of materials for details) T1 and T2 wiring Silkscreens, logos, and PCB mechanical size 	No limitation

10 Federal Communications Commission (FCC) and ISED Canada Compliance Statements

10.1 FCC Compliance Statement

Part 15.19

This device complies with Part 15 of the FCC Rules. Operation is subject to the following two conditions: (1) this device may not cause harmful interference, and (2) this device must accept any interference received, including interference that may cause undesired operation.

Part 15.21

Any changes or modifications to this equipment not expressly approved by STMicroelectronics may cause harmful interference and void the user's authority to operate this equipment.

Part 15.105

This equipment has been tested and found to comply with the limits for a Class B digital device, pursuant to part 15 of the FCC Rules. These limits are designed to provide reasonable protection against harmful interference in a residential installation. This equipment generates uses and can radiate radio frequency energy and, if not installed and used in accordance with the instruction, may cause harmful interference to radio communications. However, there is no guarantee that interference will not occur in a particular installation. If this equipment does cause harmful interference to radio or television reception which can be determined by turning the equipment off and on, the user is encouraged to try to correct interference by one or more of the following measures:

- Reorient or relocate the receiving antenna.
- Increase the separation between the equipment and receiver.
- Connect the equipment into an outlet on circuit different from that to which the receiver is connected.
- Consult the dealer or an experienced radio/TV technician for help.

Note: Use only shielded cables.

Responsible party (in the USA)

Terry Blanchard
Americas Region Legal | Group Vice President and Regional Legal Counsel, The Americas
STMicroelectronics, Inc.
750 Canyon Drive | Suite 300 | Coppel, Texas 75019
USA
Telephone: +1 972-466-7845

10.2 ISED Compliance Statement

This device complies with FCC and ISED Canada RF radiation exposure limits set forth for general population for mobile application (uncontrolled exposure). This device must not be collocated or operating in conjunction with any other antenna or transmitter.

Compliance Statement

Notice: This device complies with ISED Canada licence-exempt RSS standard(s). Operation is subject to the following two conditions: (1) this device may not cause interference, and (2) this device must accept any interference, including interference that may cause undesired operation of the device.

ISED Canada ICES-003 Compliance Label: CAN ICES-3 (B) / NMB-3 (B).

Déclaration de conformité

Avis: Le présent appareil est conforme aux CNR d'ISDE Canada applicables aux appareils radio exempts de licence. L'exploitation est autorisée aux deux conditions suivantes : (1) l'appareil ne doit pas produire de brouillage, et (2) l'utilisateur de l'appareil doit accepter tout brouillage radioélectrique subi, même si le brouillage est susceptible d'en compromettre le fonctionnement.

Étiquette de conformité à la NMB-003 d'ISDE Canada : CAN ICES-3 (B) / NMB-3 (B).

Revision history

Table 19. Document revision history

Date	Revision	Changes
19-Dec-2019	1	Initial release
18-Sep-2020	2	Updated: <ul style="list-style-type: none"> Section 6.14 LCD interface (Connector only) Added: <ul style="list-style-type: none"> Section 7.10 CN9 LCD connector Section 9 STM32L4P5G-DK information with moved updated Product marking and Section 9.2 Board revision history Section Appendix A Federal Communications Commission (FCC) and ISED Canada Class-B Compliance Statements
06-Oct-2023	3	Updated: <ul style="list-style-type: none"> Ordering information STM32L4P5G-DK product information with Product marking, Product history, and Board revision history

Contents

1	Features	2
2	Ordering information	3
2.1	Codification	3
3	Development environment	4
3.1	System requirements	4
3.2	Development toolchains	4
3.3	Demonstration software	4
4	Conventions	5
5	Delivery recommendations	6
6	Hardware layout and configuration	7
6.1	Embedded STLINK-V3E	11
6.1.1	Description	11
6.1.2	Drivers and firmware upgrade	11
6.1.3	Virtual COM port	11
6.2	Power supply	11
6.2.1	Supplying the board through the STLINK-V3E USB port	11
6.2.2	Using STLINK-V3E along with powering through external power	12
6.2.3	SMPS power supply	13
6.3	Clock references	13
6.4	Reset source	13
6.5	Boot option	13
6.6	Audio (footprint only)	14
6.7	Digital microphones (footprint only)	14
6.8	USB FS port	14
6.9	User LEDs	14
6.10	Physical input devices	14
6.11	Octo-SPI device	14
6.12	eMMC	14
6.13	MFX MCU	15
6.13.1	MFX	15
6.13.2	IDD measurement	15
6.14	LCD interface (connector only)	15
6.15	Camera connector (CN5) (footprint only)	16
7	Connectors	17

7.1	STMod+ connector (CN1)	17
7.2	STLINK-V3E programming connector (CN4).....	17
7.3	Camera module connector (footprint only) (CN5)	18
7.4	STDC14 connector (CN6)	19
7.5	USB OTG FS Micro-AB connector (CN7)	19
7.6	STLINK-V3E USB Micro-B connector (CN11)	20
7.7	ARDUINO® Uno V3 connectors (CN12, CN13, CN14, and CN15).....	21
7.8	Audio green jack - line out (footprint only) (CN16)	22
7.9	MFX programming connector (CN17).....	22
7.10	LCD connector (CN9)	23
8	STM32L4P5G-DK I/O assignment	24
9	STM32L4P5G-DK product information.....	29
9.1	Product marking	29
9.2	STM32L4P5G-DK product history.....	30
9.3	Board revision history	30
10	Federal Communications Commission (FCC) and ISED Canada Compliance Statements	31
10.1	FCC Compliance Statement	31
10.2	ISED Compliance Statement.....	31
	Revision history	32
	List of tables	35
	List of figures.....	36

List of tables

Table 1.	Ordering information	3
Table 2.	Codification explanation	3
Table 3.	ON/OFF convention	5
Table 4.	Power-supply-related jumper and solder bridge settings	12
Table 5.	Boot selection switch	14
Table 6.	MFX signals	15
Table 7.	IDD measurement-related jumper setting	15
Table 8.	STMod+ connector (CN1) pinout	17
Table 9.	Camera module connector (CN5) pinout	18
Table 10.	STDC14 debugging connector (CN6) pinout	19
Table 11.	USB OTG FS Micro-AB connector (CN7) pinout	19
Table 12.	USB Micro-B connector (CN11) pinout	20
Table 13.	ARDUINO® Uno V3 compatible connector pinout	21
Table 14.	Onboard audio jack connector (CN16) pinout	22
Table 15.	LCD connector (CN9) pinout	23
Table 16.	STM32L4P5G-DK I/O assignment	24
Table 17.	Product history	30
Table 18.	Board revision history	30
Table 19.	Document revision history	32

List of figures

Figure 1.	STM32L4P5G-DK top view	1
Figure 2.	STM32L4P5G-DK bottom view	1
Figure 3.	STM32L4P5G-DK hardware block diagram	7
Figure 4.	STM32L4P5G-DK PCB layout (top view)	8
Figure 5.	STM32L4P5G-DK PCB layout (bottom view)	9
Figure 6.	STM32L4P5G-DK board mechanical dimensions (top view)	10
Figure 7.	STMod+ connector (CN1) front view	17
Figure 8.	Camera module connector (CN5) top view	18
Figure 9.	STDC14 debugging connector (CN6) top view	19
Figure 10.	USB OTG FS Micro-AB connector (CN7) front view.	19
Figure 11.	Micro-B connector (CN11) top view	20
Figure 12.	Stereo headset with a microphone jack (CN16).	22
Figure 13.	LCD connector (CN9) top view	23

IMPORTANT NOTICE – READ CAREFULLY

STMicroelectronics NV and its subsidiaries ("ST") reserve the right to make changes, corrections, enhancements, modifications, and improvements to ST products and/or to this document at any time without notice. Purchasers should obtain the latest relevant information on ST products before placing orders. ST products are sold pursuant to ST's terms and conditions of sale in place at the time of order acknowledgment.

Purchasers are solely responsible for the choice, selection, and use of ST products and ST assumes no liability for application assistance or the design of purchasers' products.

No license, express or implied, to any intellectual property right is granted by ST herein.

Resale of ST products with provisions different from the information set forth herein shall void any warranty granted by ST for such product.

ST and the ST logo are trademarks of ST. For additional information about ST trademarks, refer to www.st.com/trademarks. All other product or service names are the property of their respective owners.

Information in this document supersedes and replaces information previously supplied in any prior versions of this document.

© 2023 STMicroelectronics – All rights reserved