
STSW-STUSB001 quick installation guide

Introduction

STSW-STUSB001 is a software package containing a Graphical User Interface (GUI) used to ease STUSB ICs device customization, evaluation and debug.

In order to run the GUI on a laptop, an STM32 Nucleo board must be programmed to act as a USB to I²C bridge between the laptop and the STUSB evaluation boards.

The document details the full installation process, from GUI software package download to NUCLEO board configuration, including error messages.

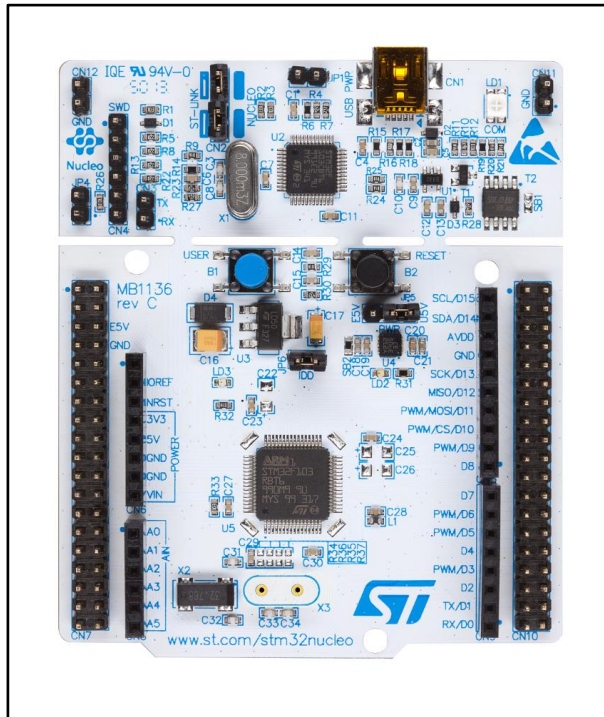
1 System configuration

1.1 Hardware setup

Follow the procedure below to set up your hardware.

1. Connect the NUCLEO-F072RB to your computer via mini-B USB cable

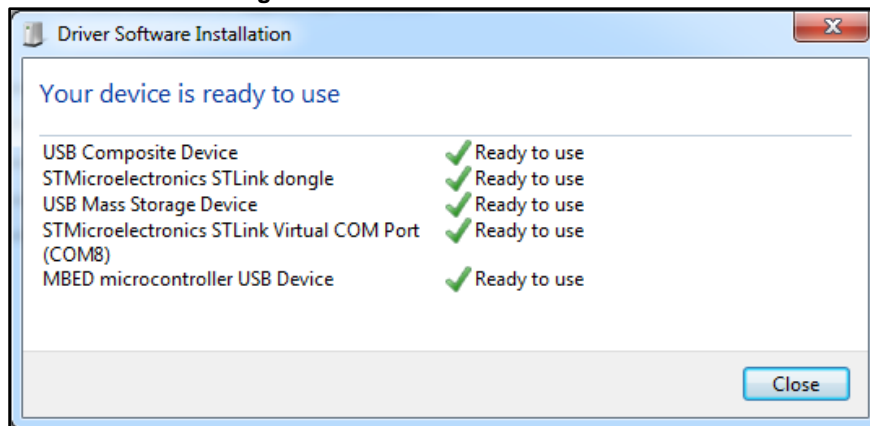
Figure 1: NUCLEO-F072RB development board



You can also use the NUCLEO-L476RG development board

2. Check the device drivers are installed successfully

Figure 2: Driver software installation



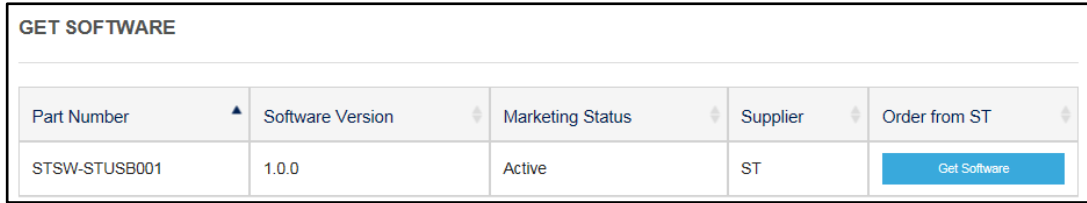
3. **Download** the STSW-STUSB001 GUI from homepage by searching **STSW-STUSB001** or from the following location:

Figure 3: STSW-STUSB001 search path



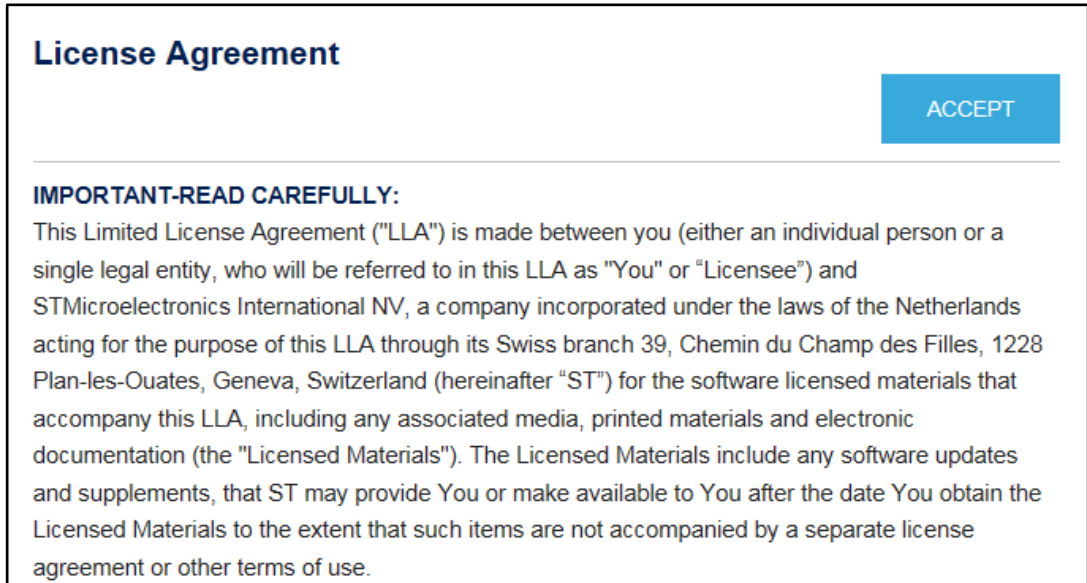
4. **Click** the Get Software button at the bottom of the page

Figure 4: STSW-STUSB001 Get Software button



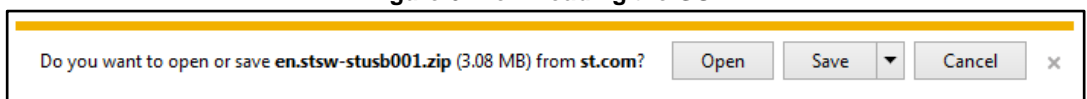
5. **Accept** the license agreement to begin downloading

Figure 5: STSW-STUSB001 License Agreement



6. **Save** the file **en.stsw-stusb001.zip** on your computer

Figure 6: Downloading the GUI



7. **Unzip** the contents to a clean folder

Figure 7: STSW-STUSB001 GUI package files

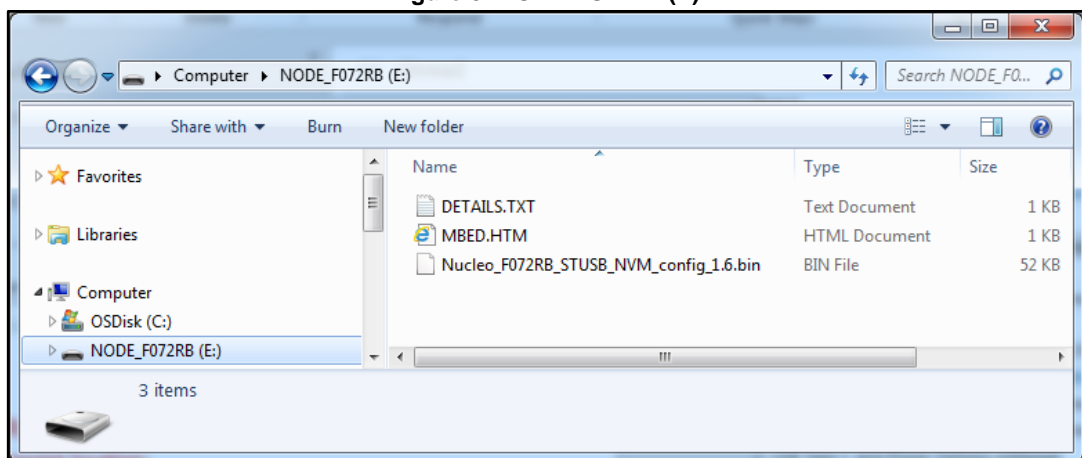
Name	Size
GUI_STUSB_UTILITY_3.01.exe	476 672
mfc110u.dll	4 456 520
msvcp110.dll	535 008
msvcr110.dll	875 472
Nucleo_F072RB_STUSB_NVM_config_1.6.bin	52 319
uiointerface.dll	218 624

8. **Drag and drop** NUCLEO_F072RB_STUSB_NVM_config_1.6.bin to the STM32 Nucleo drive on your computer.



This drive is created automatically when you connect the board to your computer.

Figure 8: NODE F072RB(E)



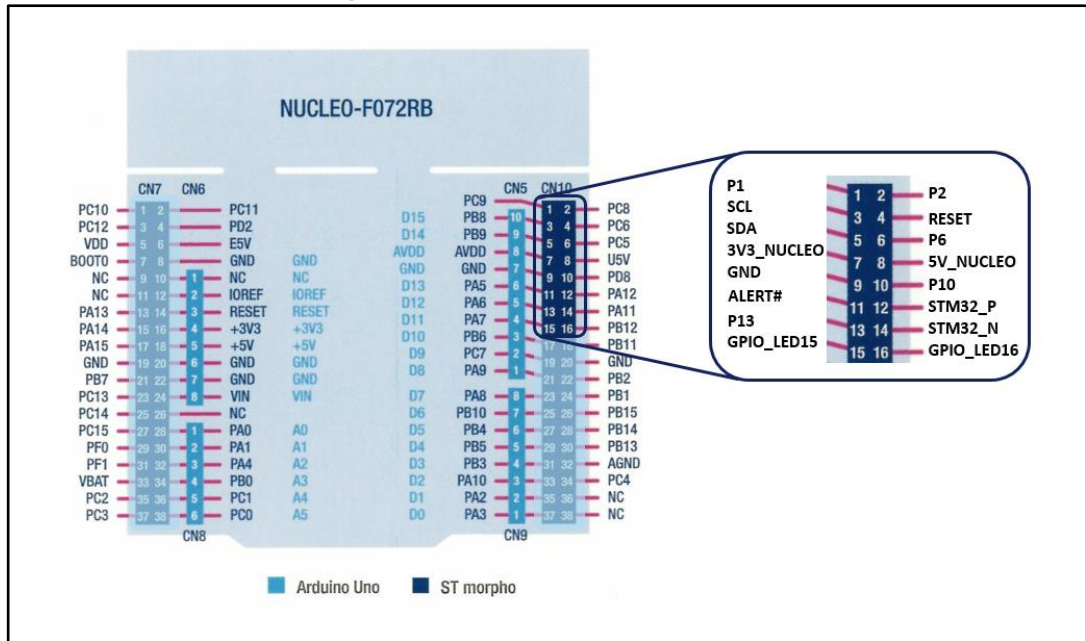
9. **Press** the black RESET button on the NUCLEO-F072RB.

The board is now configured to act as a USB to I²C bridge between the GUI and STUSB products.

10. **Disconnect** the mini-B USB cable connecting the NUCLEO-F072RB and your computer.

11. Plug your STUSB evaluation board onto the NUCLEO-F072RB development board as shown below

Figure 9: NUCLEO-F072RB connectors



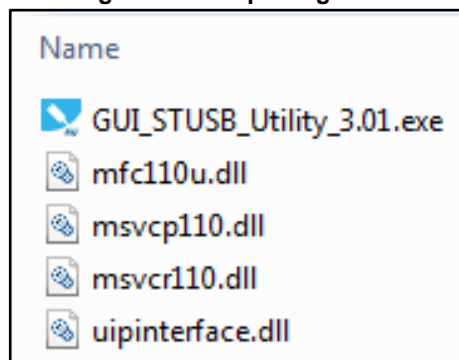
1.2 GUI setup

1. Extract the en.stsw-stusb001.zip package files to the folder on your PC (as described in the previous chapter).



The .dll files and the .exe file must be in the same directory

Figure 10: GUI package files



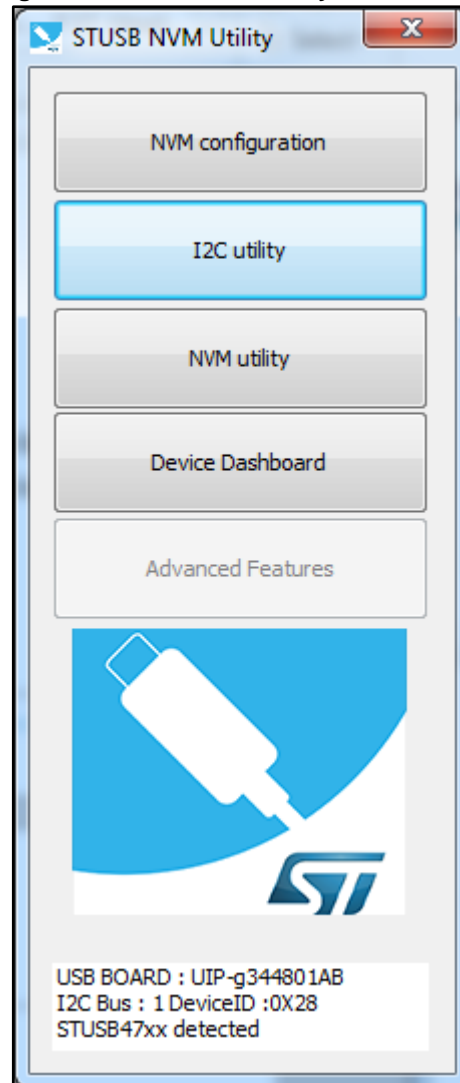
2. **Connect** your computer to the STUSB evaluation board with the micro-B USB cable (see [Figure 9: "NUCLEO-F072RB connectors"](#)).



No connection between the NUCLEO-F072RB and the computer is required.

3. **Run** the .exe file to open the start window of the GUI.

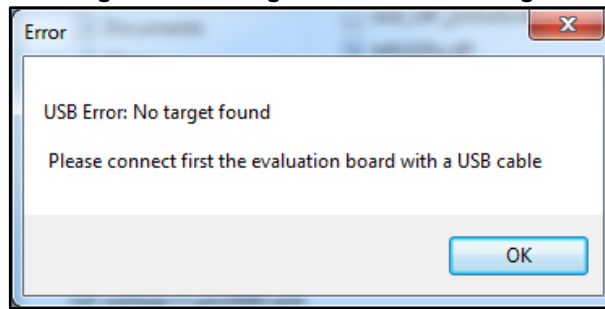
Figure 11: STUSB NVM Utility start window



The GUI is now ready to use.

1.3 Troubleshooting

Figure 12: No target found error message



Refer to the following scenarios if the GUI fails to connect with the STUSB evaluation board.

- **CASE 1:** the LEDs on the NUCLEO-F072RB board and STUSB board are blinking.
 - Check the USB cable connection on the STD-A port (on computer) and on micro-B port (on STUSB board).
- **CASE 2:** the LEDs on the NUCLEO-F072RB are blinking, but not on the STUSB board.
 - The Software has not been installed properly on the NUCLEO-F072RB. Repeat the hardware configuration process ([Section 1.1: "Hardware setup"](#)).
- **CASE 3:** no LEDs are blinking on either board.
 - Check the connection between the NUCLEO-F072RB and the STUSB evaluation board (see [Figure 9: "NUCLEO-F072RB connectors"](#)).

2 Compatible STUSB evaluation boards

Table 1: Compatible DUT boards

ST part number	Description
STEVAL-CCC001	STUSB1600 evaluation board
P-NUCLEO-USB002	STUSB1602 + STM32 dual port evaluation board
STEVAL-ISC003V1	STUSB4710 evaluation board

3 Revision history

Table 2: Document revision history

Date	Version	Changes
28-Jul-2017	1	Initial release.

IMPORTANT NOTICE – PLEASE READ CAREFULLY

STMicroelectronics NV and its subsidiaries ("ST") reserve the right to make changes, corrections, enhancements, modifications, and improvements to ST products and/or to this document at any time without notice. Purchasers should obtain the latest relevant information on ST products before placing orders. ST products are sold pursuant to ST's terms and conditions of sale in place at the time of order acknowledgement.

Purchasers are solely responsible for the choice, selection, and use of ST products and ST assumes no liability for application assistance or the design of Purchasers' products.

No license, express or implied, to any intellectual property right is granted by ST herein.

Resale of ST products with provisions different from the information set forth herein shall void any warranty granted by ST for such product.

ST and the ST logo are trademarks of ST. All other product or service names are the property of their respective owners.

Information in this document supersedes and replaces information previously supplied in any prior versions of this document.

© 2017 STMicroelectronics – All rights reserved